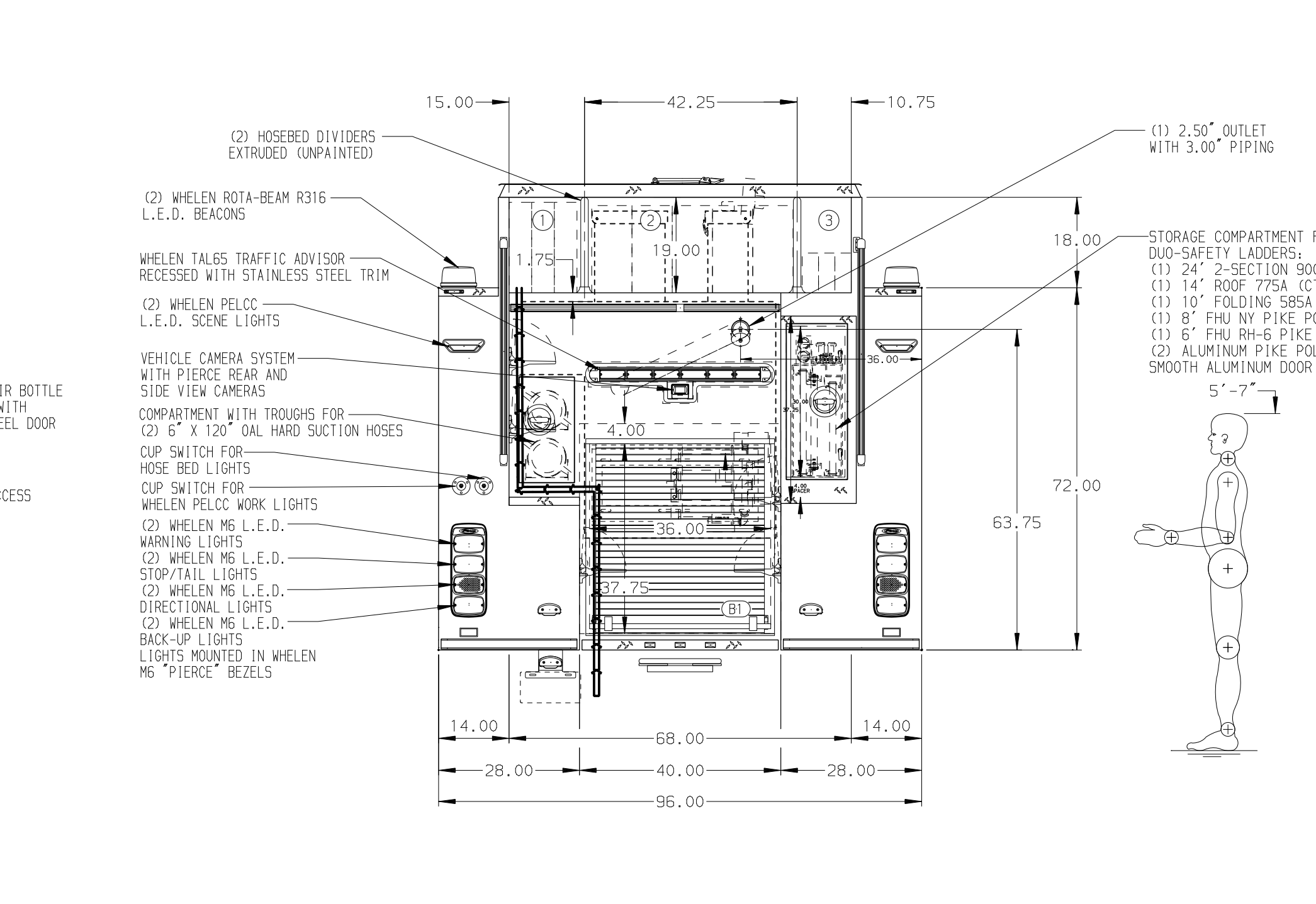
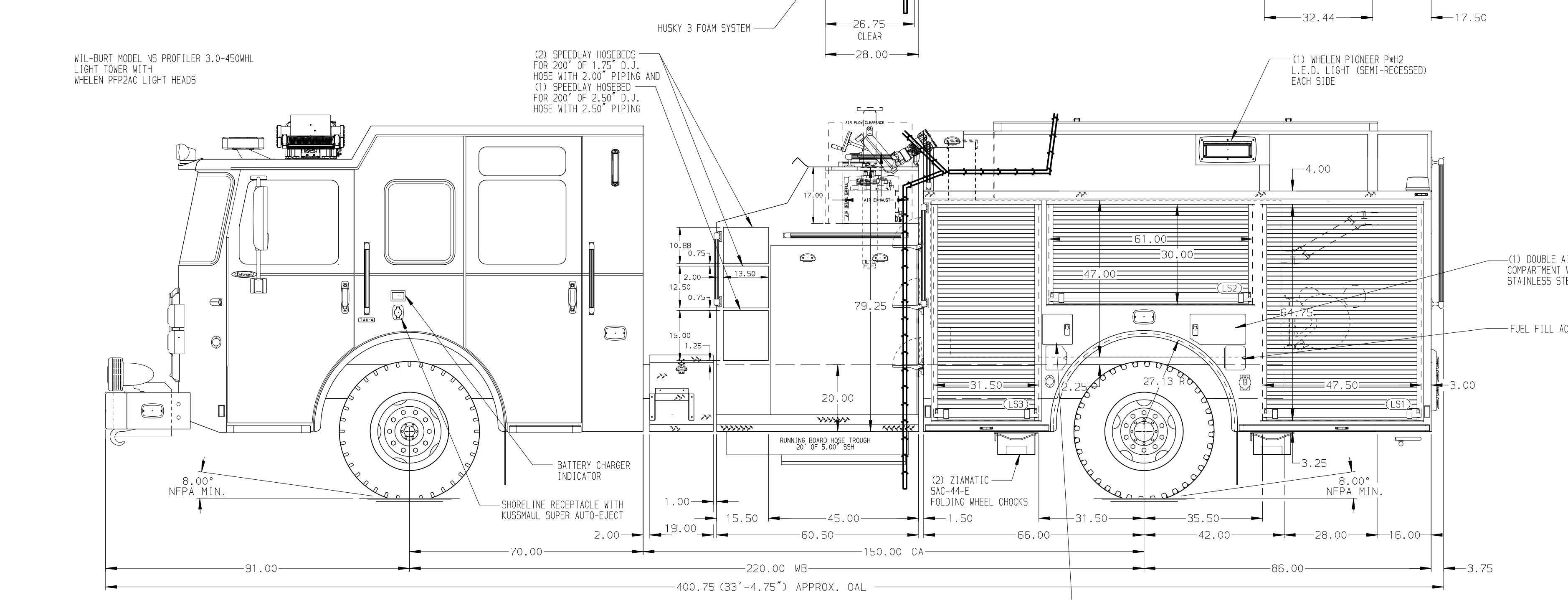


- HOSEBED CAPACITIES**
- ① 600' OF 2.50" HOSE
  - ② 1000' OF 5.00" HOSE
  - ③ 300' OF 1.75" HOSE



ALUMINUM BODY

MAXIMUM O.A.H. 118.00"

**NOTE**  
DIMENSIONS SHOWN ARE APPROXIMATE AND ARE SUBJECT TO MINOR DEVIATIONS AS MAY OCCUR OR BE NECESSARY IN CONSTRUCTION. MINOR DETAILS NOT SHOWN.

1. ONSPOT AUTOMATIC TIRE CHAINS TO BE PROVIDED AT REAR
2. BATTERY CHARGER/COMPRESSOR LOCATED IN COMPARTMENT LS3
3. DUAL L.E.D. LIGHT STRIPS LOCATED IN HOSE BED
4. ONE FULL WIDTH/DEPTH ADJUSTABLE SHELF IN COMPARTMENTS LS1, LS3, RS3, AND B1
5. ONE FLOOR MOUNTED SLIDE-OUT TRAY WITH SIDE SLIDES IN COMPARTMENTS RS1 AND RS3
6. SWING-OUT TOOL BOARD WITH PEGBOARD PATTERN IN COMPARTMENT LS2
7. ONE VERTICAL PARTITION (SPECIAL HEIGHT) IN COMPARTMENT LS1
8. ALUMINUM PEGBOARD ON BACK WALL COMPARTMENTS LS3, RS1, AND RS2
9. ALUMINUM PEGBOARD WITH TRACKS ON THE SIDE WALLS OF COMPARTMENT LS3
10. CIRCUIT BREAKER PANEL IN COMPARTMENT LS3
11. HANNAY ELECTRIC REWIND CORD REEL MODEL 1618-17-18 WITH CAPTIVE ROLLER LOCATED IN COMPARTMENT B1 WITH 200' OF 10/3 YELLOW CABLE
12. MICROPHONE AND SPEAKER WITH PLAIN DOOR LOCATED IN TOP MOUNT PANEL

08APR21	SAM	CW1	CHASSIS DATA
06APR21	SAM	CW1	MAKE
02MAR21	SAM	CW1	PIERCE
01MAR21	SAM	CW1	MODEL
17DEC20	SAM	WKL	ENFORCER
REV	DATE	BY	CH

**Pierce MANUFACTURING INC.**

JOB NO. 35720  
SCALE 1:24  
DATE  
DRAWN BY SAM  
10DEC20  
CHECKED BY WKL  
10DEC20  
SHEET SIZE D  
SHEET NO. 1 OF 1

TITLE 1500-D-770P, 750G WATER W/20G FOAM, 152" PUMPER BODY LADDERS BTWN TANK AND BODY, DELUGE, GENERATOR  
FOR EMPORIA FIRE DEPARTMENT  
EMPORIA, KANSAS  
DWG NO. 35720AD