

# PUMPER BODY

Long Aluminum 2nd Gen Pumper

## CHASSIS

Sober FR Chassis

## CHASSIS AXLE, FRONT, CUSTOM

20,000 Lb Dana Axle

## AXLE, REAR

27,000 Lb Meritor Axle

## ENGINE

450 HP Cummins L9 Engine

## TRANSMISSION

Allison 5th Gen, 3000 EVS P

## BUMPER

19" Extended Stainless Steel

## CAB

7010 Sober FR Cab

## BODY

### WATER TANK

980 Gallon Poly Water Tank

### COMPT, PUMPER, REAR

44.50" FF RollUp Rear Compt

### COMPT, PUMPER, LEFT SIDE

161" RollUp Full Height Front & Rear FDLR

### COMPT, PUMPER, RIGHT SIDE

161" RollUp Full Height Front & Rear FDLR

## FIRE SUPPRESSION PUMPHOUSE

52" Control Zone Side Mount

### PUMP

1500 GPM Waterous CSU

### CROSSLAYS, 1.50"

(2) 1.50" Standard Capacity

### CROSSLAYS, 2.50"

(1) 2.50" Standard Capacity

### SPEEDLAYS

Speedlays Not Required

### GENERATOR

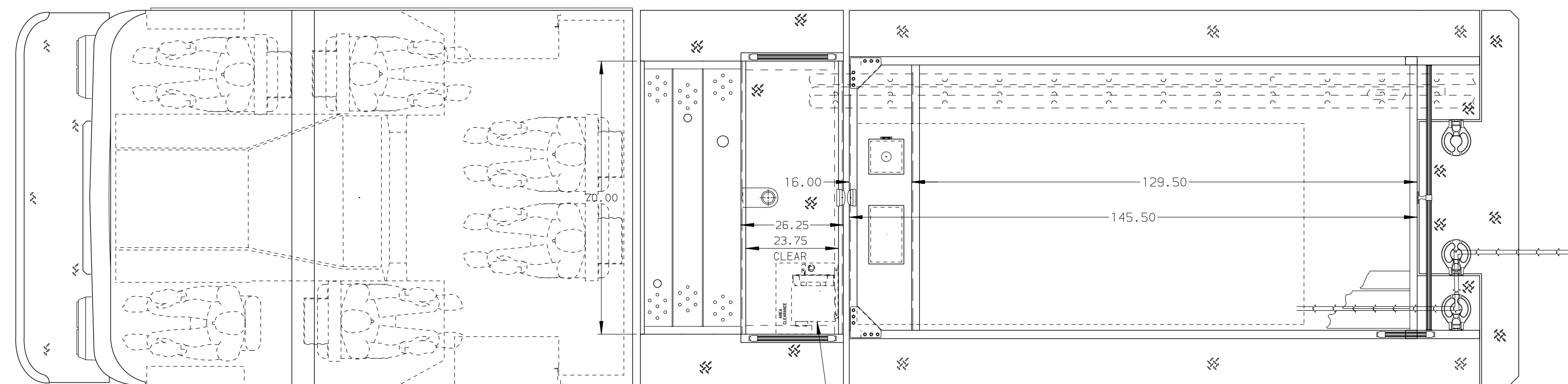
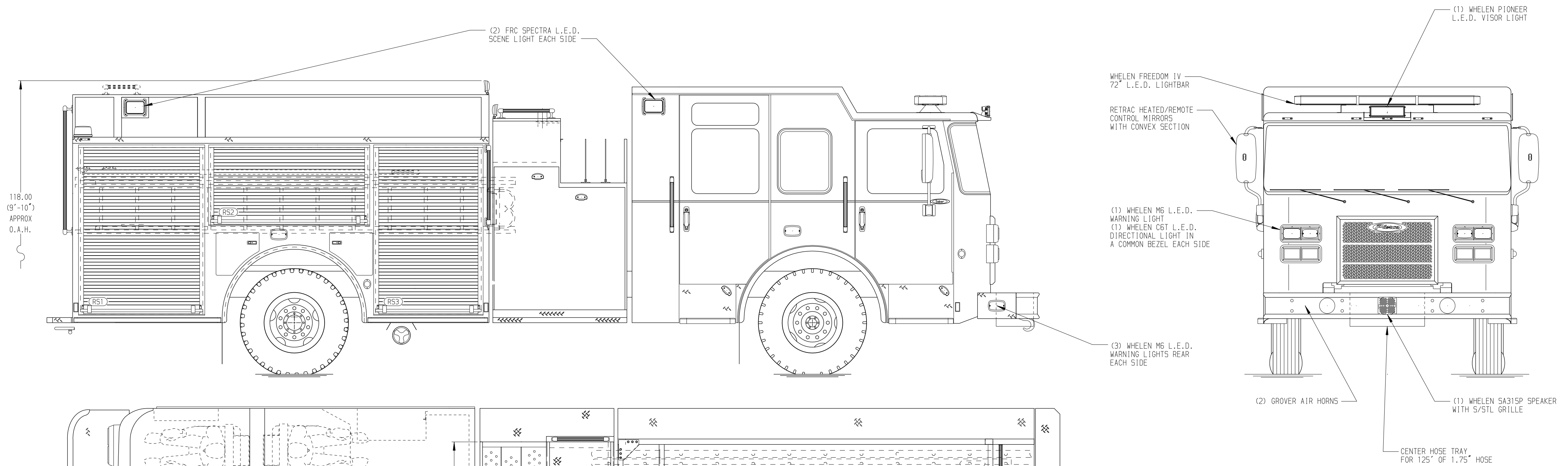
Generator Not Required

### Foam System

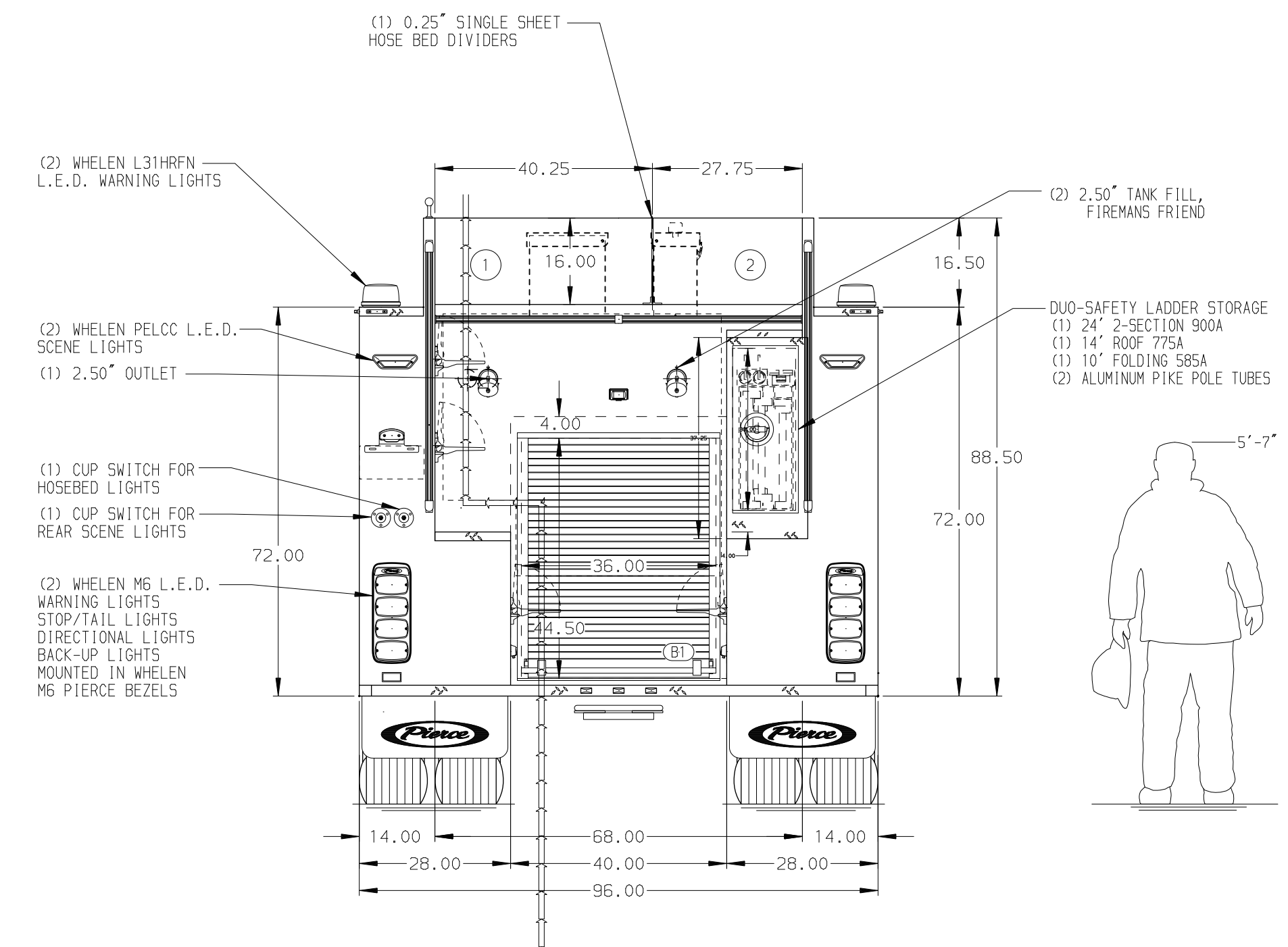
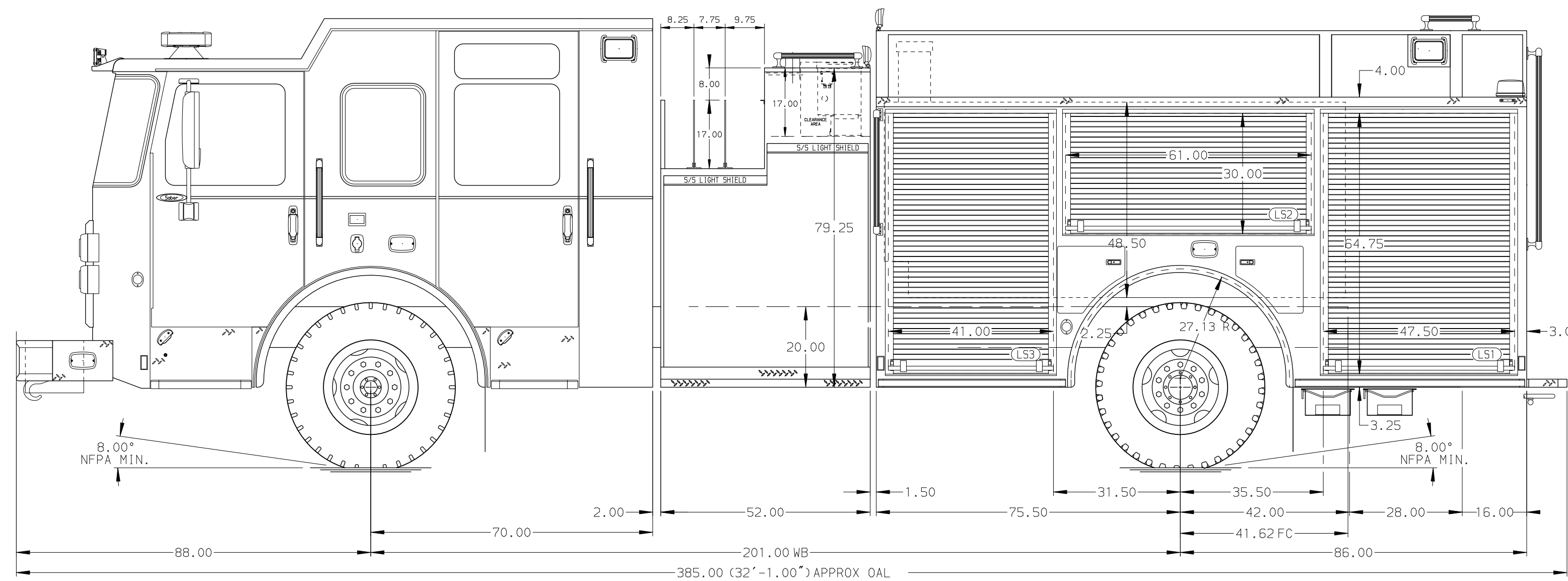
Husky 3 Single Agent Foam System

### Foam Cell

20 Gallon Foam Cell, Reduced Water



HOSEBED CAPACITY	
BED 1	1000' OF 5.00" D.J. POLY HOSE
BED 2	600' OF 2.50" D.J. POLY HOSE



**NOTE**  
DIMENSIONS SHOWN ARE APPROXIMATE AND ARE SUBJECT TO MINOR DEVIATIONS AS MAY OCCUR OR BE NECESSARY IN CONSTRUCTION. MINOR DETAILS NOT SHOWN.

- ONE 1.50 OUTLET WITH 2.00 PIPING AND SHIVEL LOCATED IN CENTER BUMPER TRAY
- SHORELINE RECEPTACLE WITH KUSSMAUL SUPER AUTO-EJECT LOCATED ON DRIVER SIDE OF THE CAB
- AIR INLET WITH DISCONNECT COUPLING IN THE DRIVER SIDE STEPWELL
- BATTERY CHARGER LOCATED IN COMPARTMENT PER SHOP ORDER
- BATTERY CHARGE INDICATOR LOCATED ON THE DRIVER SIDE SEAT RISER
- ADJUSTABLE SHELVES IN COMPARTMENTS PER SHOP ORDER
- ONE FLOOR MOUNTED SLIDE-OUT TRAY IN COMPARTMENT PER SHOP ORDER
- MOUNTING PROVISIONS FOR FRONT INLET
- MOUNTING PROVISIONS FOR WILL BURT NIGH SCAN POWERLITE NS 3.0 10" ON CAB

23FEB21	RHU	CAG	
REV	DATE	BY	CH

<b>Pierce MANUFACTURING INC.</b>		JOB NO.	35707
TITLE		SCALE	DATE
Pierce Pumper Approval Drawing		1:24	
FOR		DRAWN BY	130CT20
Pierce Field Unit Bradenton, Florida		CHECKED BY	140CT20
DWG NO.		SHEET SIZE	SHEET NO.
35707AD		D	1 OF 1