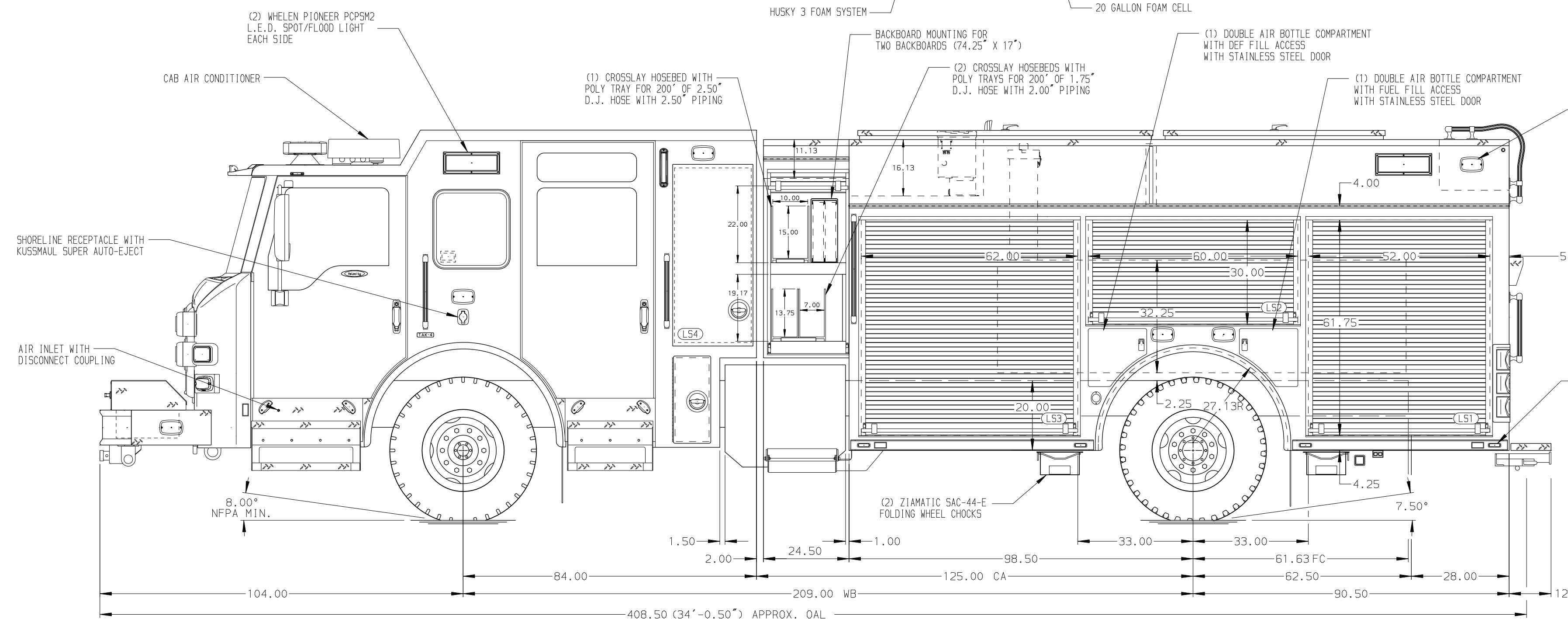
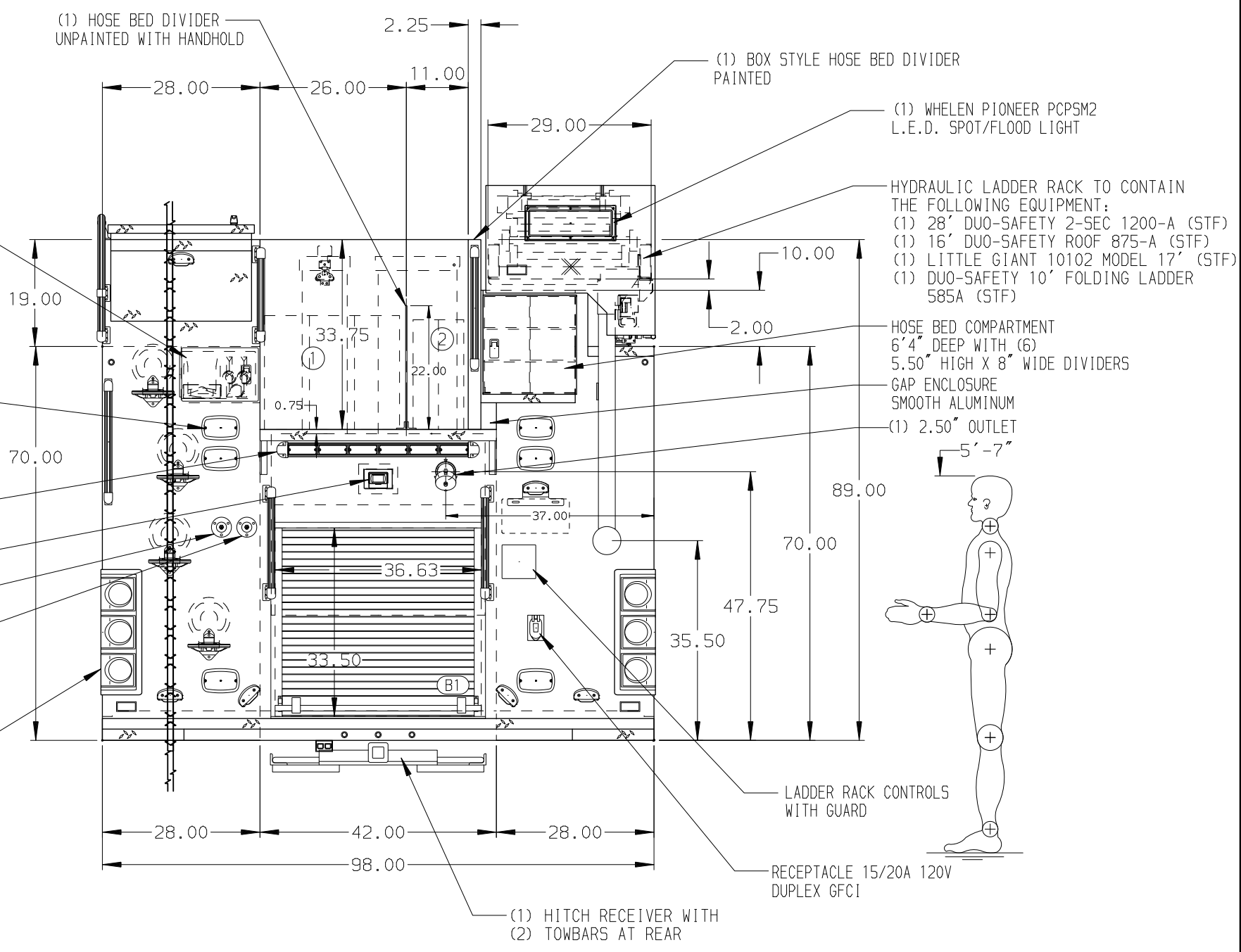


HOSEBED CAPACITIES  
 ① 800' OF 5.00" D.J. POLY HOSE  
 ② 500' OF 2.50" D.J. POLY HOSE



STORAGE COMPARTMENT WITH SMOOTH ALUMINUM DOOR FOR THE FOLLOWING EQUIPMENT:  
 (1) 10' FHU TR5T-10 TRASH HOOK  
 (1) 8' FHU RH-8 PIKE POLE  
 (1) 6' FHU RH-6 PIKE POLE  
 (1) FOAM PICK UP TUBE  
 (2) ALUMINUM PIKE POLE TUBES WITH SPL NOTCH  
 (2) ALUMINUM TROUGH FOR D-HANDLE PIKE POLE



ALUMINUM BODY SIDE ROLL AND FRONTAL IMPACT PROTECTION MAXIMUM O.A.H. 122.00"

NOTE  
 DIMENSIONS SHOWN ARE APPROXIMATE AND ARE SUBJECT TO MINOR DEVIATIONS AS MAY OCCUR OR BE NECESSARY IN CONSTRUCTION. MINOR DETAILS NOT SHOWN.

1. KUSMAUL COMPRESSOR LOCATED BEHIND DRIVER'S SEAT
2. BATTERY CHARGER LOCATED IN HATCH COMPARTMENT LH2 FORWARD
3. BATTERY CHARGER INDICATOR DISPLAYED THROUGH WINDOW BEHIND DRIVER'S SEAT
4. DUAL L.E.D. LIGHT STRIPS LOCATED IN HOSE BED
5. ONE FULL WIDTH/DEPTH ADJUSTABLE SHELF 15 DEGREE DOWNWARD ANGLE IN COMPARTMENT RS3
6. ONE FULL WIDTH/DEPTH ADJUSTABLE SHELF IN COMPARTMENTS LS1 AND RS3; TWO IN LS3 AND RS1
7. ONE ADJUSTABLE SLIDE-OUT TRAY IN COMPARTMENT RS3
8. ONE ADJUSTABLE TILTING SLIDE-OUT TRAY IN COMPARTMENT LS1, LS2, AND RS2
9. ONE FLOOR MOUNTED SLIDE-OUT TRAY IN COMPARTMENT RS3
10. TWO ADJUSTABLE TOOL BOARDS MOUNTED TO SLIDE-OUT TRAYS IN COMPARTMENT RS1
11. TRANSVERSE PARTITION IN COMPARTMENT LS1/RS1
12. AIR BAG BACKS IN COMPARTMENT ON RS1 ON TOOLBOARD
13. ALL FOLDING STEPS TO BE TRIDENT WITH INTEGRATED L.E.D. LIGHT UNLESS SPECIFIED
14. 120V DUPLEX RECEPTACLE LOCATED IN LS1 AND RS3

| REV     | DATE | BY  | CH           | VELOCITY FR |
|---------|------|-----|--------------|-------------|
| 21JUN21 | SAM  | GKH | CHASSIS DATA |             |
| 19MAY21 | SAM  | KWI | MAKE         |             |
| 31MAR21 | SAM  | GKH | PIERCE       |             |
| 29MAR21 | SAM  | GKH | MODEL        |             |
| 12FEB21 | SAM  | GKH |              |             |

|         |   |            |           |
|---------|---|------------|-----------|
|         |   | JOB NO.    | 35677     |
|         |   | SCALE      | DATE      |
| TITLE   | 1500-D-520P, 500G WATER W/20G FOAM, DELUGE, HUSKY 3 189" PUC RESCUE BODY, HYDRAULIC LADDER RACK | DRAWN BY   | SAM       |
| FOR     | NORTH METRO FIRE RESCUE BROOMFIELD, COLORADO  | CHECKED BY | KOU       |
| DWG NO. | 35677AD   | SHEET SIZE | SHEET NO. |
|         |   | D          | 1 OF 1    |