

**PUMPER
BODY**

Long Aluminum 2nd Gen Pumper

CHASSIS

Enforcer Chassis

**CHASSIS
AXLE, FRONT, CUSTOM**

18,000 Lb Dana Axle

AXLE, REAR

27,000 Lb Dana Axle

ENGINE

450 HP Cummins L9 Engine

TRANSMISSION

Allison 5th Gen, 3000 EVS P

BUMPER

Non-Extended Stainless Steel

CAB

6010 Enforcer Cab

**BODY
WATER TANK**

1000 Gallon Poly Water Tank

COMPT, PUMPER, REAR

51.25" FF Rollup Rear Compt

COMPT, PUMPER, LEFT SIDE

161" Lap Full Height Front & Rear FOLER

COMPT, PUMPER, RIGHT SIDE

161" Lap Full Height Front & Rear FOLER

**FIRE SUPPRESSION
PUMPHOUSE**

42" Control Zone Top Mount

PUMP

1250 GPM Waterous CXC20

CROSSLAYS, 1.50"

1.50" Crosslays Not Required

CROSSLAYS, 2.50"

2.50" Crosslay Not Required

SPEEDLAYS

(2) 1.50" Standard Capacity

GENERATOR

Generator Not Required

Foam System

Foam System Not Required

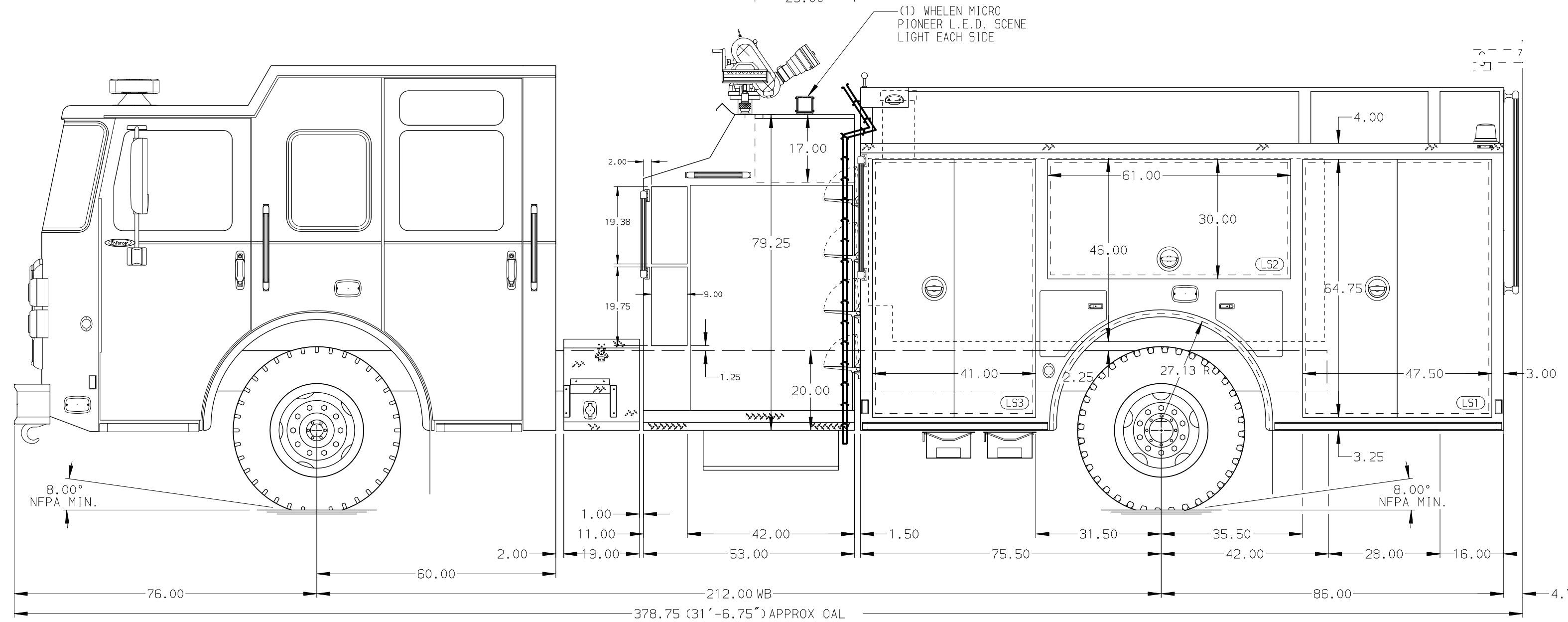
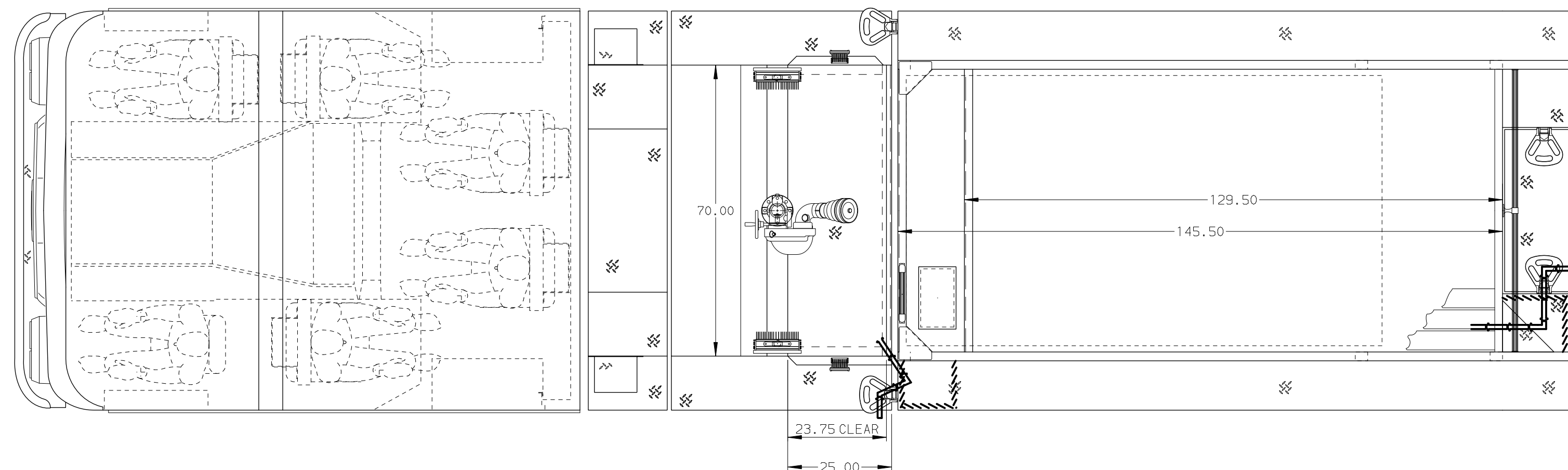
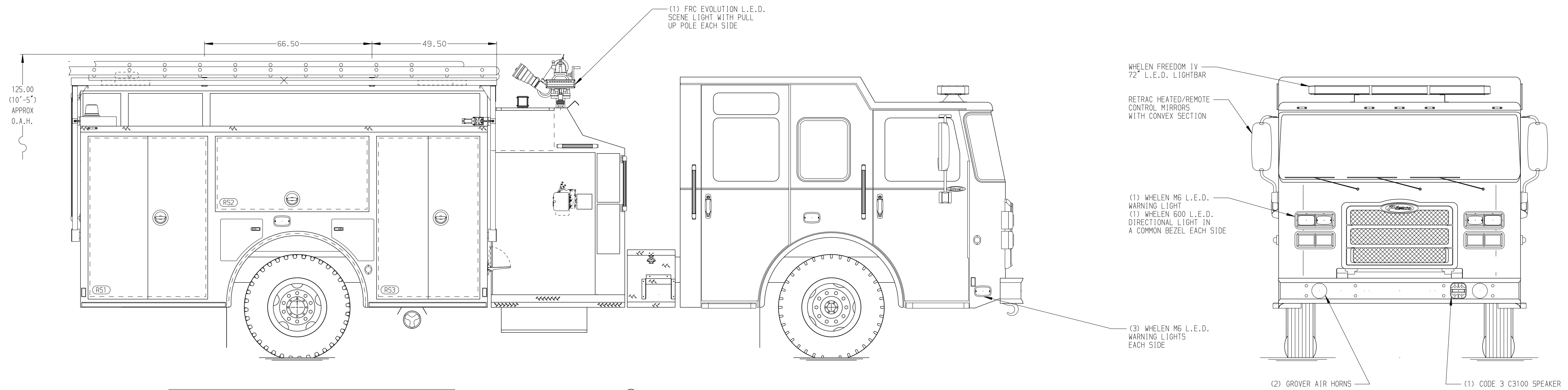
Foam Cell

Foam Cell Not Required

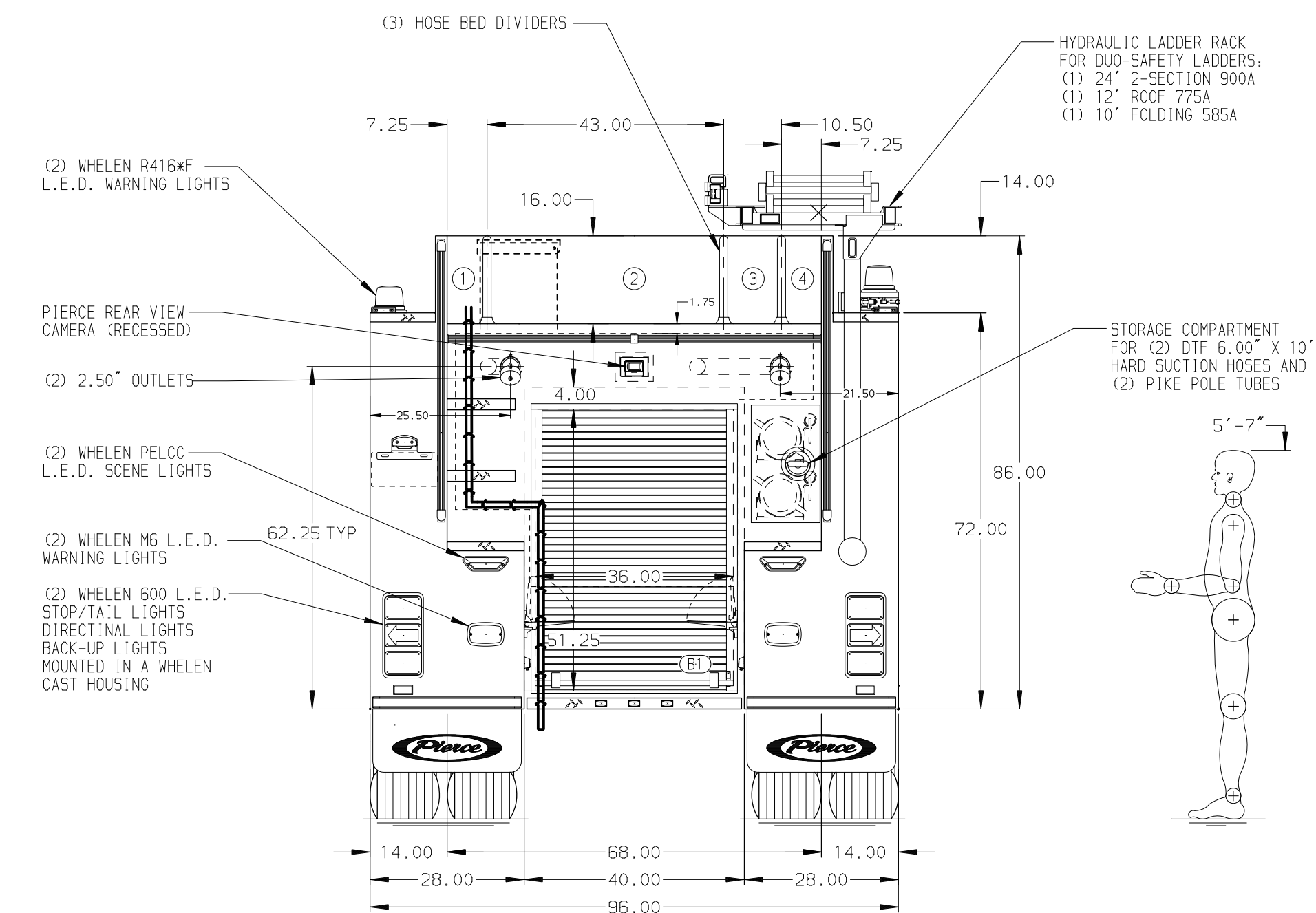
Side Roll and Frontal Impact Protection

NOTE
DIMENSIONS SHOWN ARE APPROXIMATE AND ARE SUBJECT TO MINOR DEVIATIONS AS MAY OCCUR OR BE NECESSARY IN CONSTRUCTION. MINOR DETAILS NOT SHOWN.

1. AUTOMATIC TIRE CHAINS
2. SHORELINE RECEPTACLE WITH KUSSMALL SUPER AUTO-EJECT LOCATED ON DRIVER SIDE OF WALKWAY
3. BATTERY CHARGER LOCATED IN COMPARTMENT PER SHOP ORDER
4. BATTERY CHARGE INDICATOR LOCATED ON THE DRIVER SIDE SEAT RISER
5. SIX ADJUSTABLE SHELVES LOCATED PER SHOP ORDER
6. TWO FLOOR MOUNTED SLIDE-OUT TRAYS LOCATED PER SHOP ORDER
7. ONE ADJUSTABLE SLIDE-OUT TRAY LOCATED PER SHOP ORDER
8. ONE "L" SHAPED PARTITION LOCATED PER SHOP ORDER
9. ALUMINUM PEGBOARD LOCATED PER SHOP ORDER
10. SIX 120V DUPLEX RECEPTACLE LOCATED PER SHOP ORDER



HOSEBED CAPACITY	
BED 1	250' OF 1.75" D.J. POLY HOSE
BED 2	1000' OF 5.00" D.J. POLY HOSE
BED 3	250' OF 2.50" D.J. POLY HOSE
BED 4	250' OF 1.75" D.J. POLY HOSE



		JOB NO.	35651
		SCALE	DATE
TITLE Pierce Pumper Approval Drawing MAKE MODEL ENFORCER		DRAWN BY	020CT20
		CHECKED BY	50CT20
DWG NO. 35651AD		SHEET SIZE	SHEET NO.
		D	1 OF 1

REV	DATE	BY	CH
03FEB21	MMF	PJP	
16DEC20	COL	PJP	