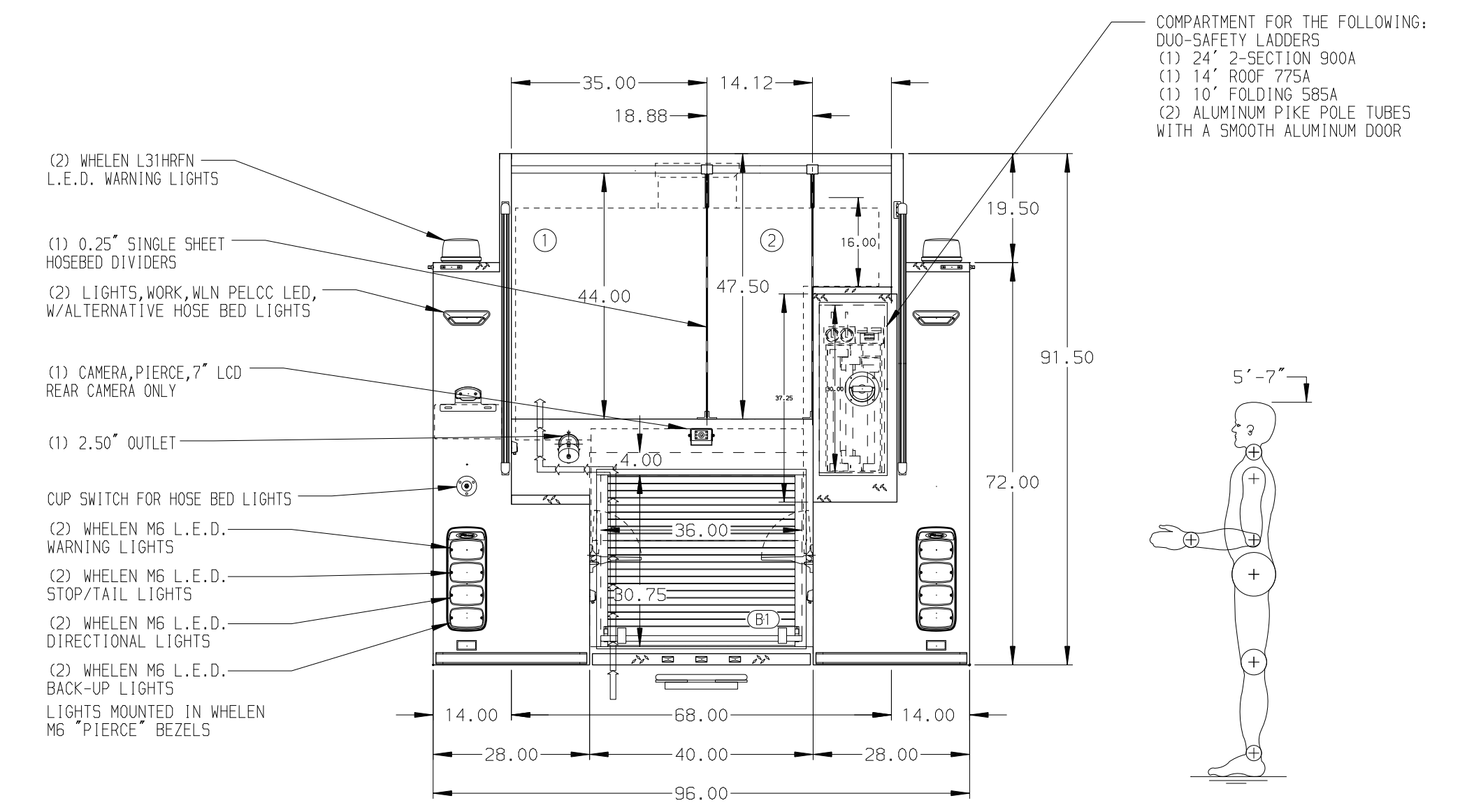
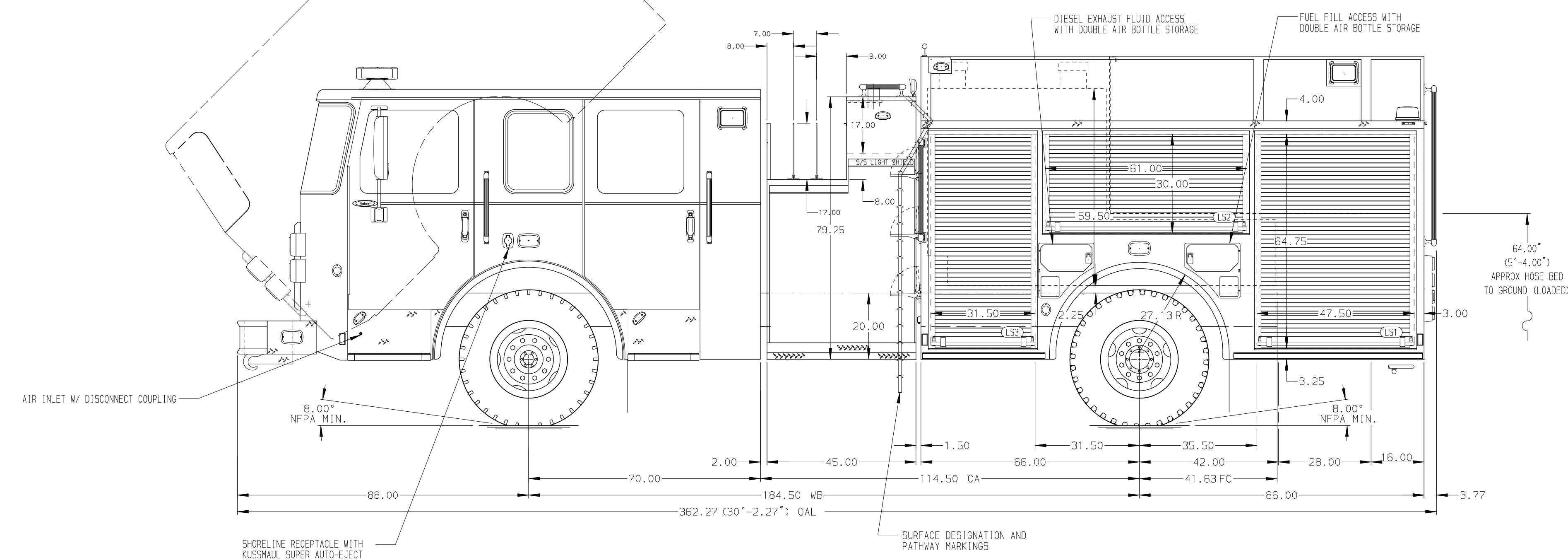


- HOSEBED CAPACITIES
- ① 1000' OF 5.00" D.J. POLY HOSE
 - ② 500' OF 2.50" D.J. POLY HOSE



ALUMINUM BODY

NOTE
 DIMENSIONS SHOWN ARE APPROXIMATE AND ARE SUBJECT TO MINOR DEVIATIONS AS MAY OCCUR OR BE NECESSARY IN CONSTRUCTION. MINOR DETAILS NOT SHOWN.

				CHASSIS DATA	TITLE	1500-D-750P, 725G WATER 25G FOAM, 152" NEW YORK STYLE PUMPER, (2) CROSSLAYS, 45" PUMPHOUSE, DELUGE	JOB NO.	35649
				MAKE	FOR	PIERCE FIELD UNIT BRADENTON, FLORIDA	SCALE	1:24
				MODEL	DWG NO.	35649AD	DRAWN BY	RHU
09DEC20	RHU	CAG		PIERCE	CHECKED BY	CAG	DATE	15SEP20
REV	DATE	BY	CH	SABER FR	SHEET SIZE	D	SHEET NO.	1 OF 1