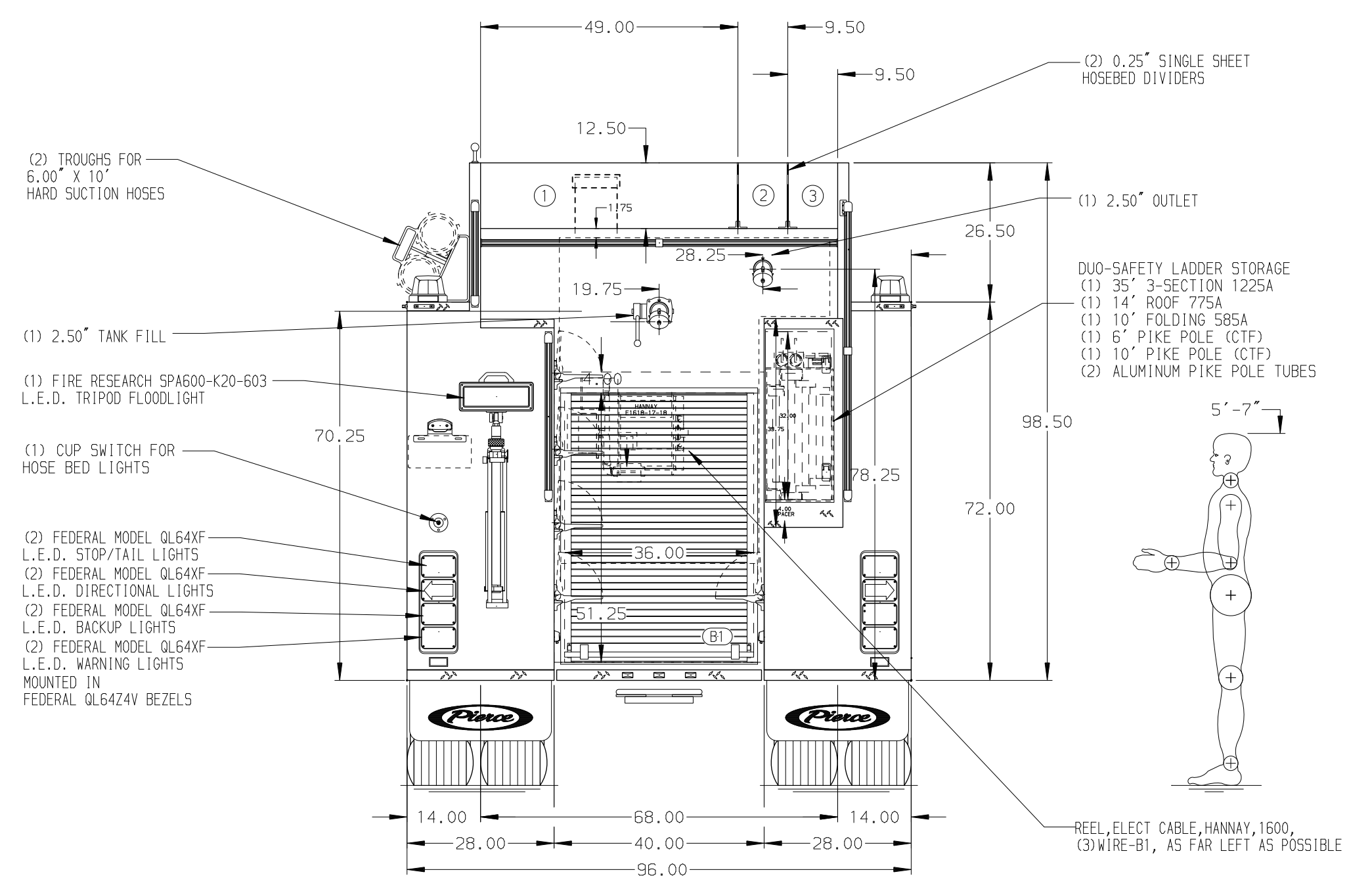
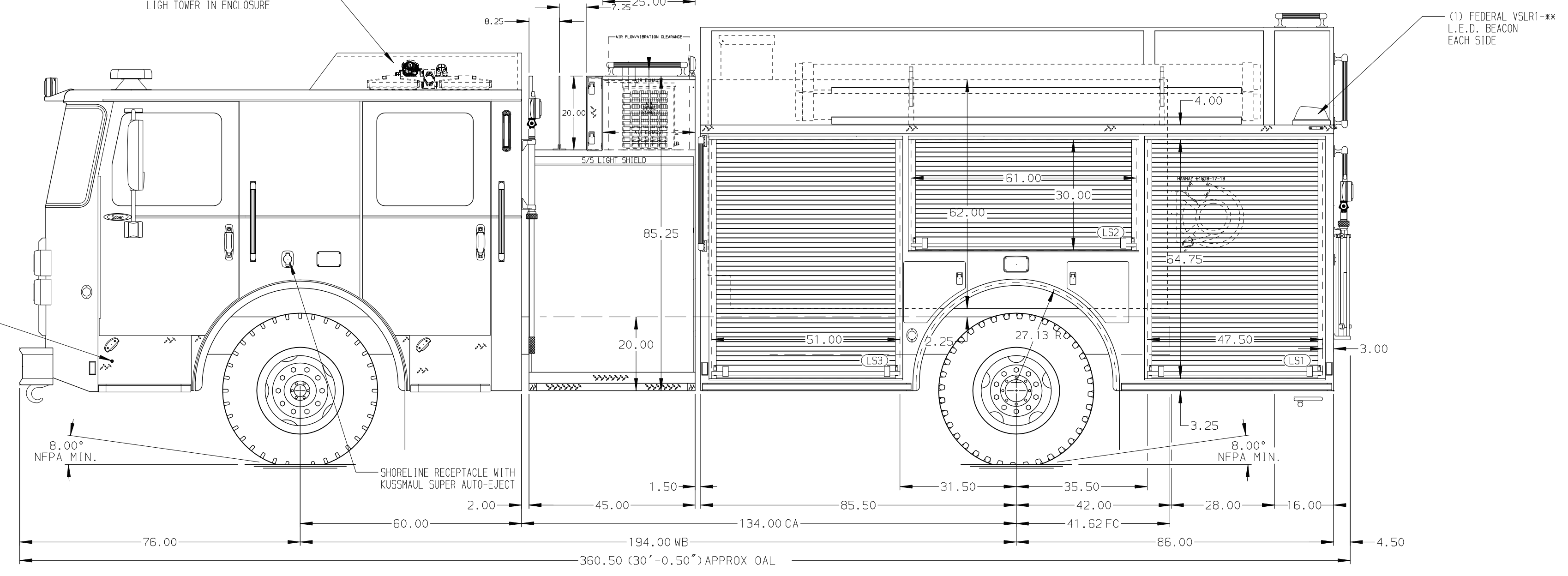


- HOSEBED CAPACITIES
- ① - 1000' OF 5.00" DJP HOSE
 - ② - 250' OF 2.50" DJP HOSE
 - ③ - 250' OF 2.50" DJP HOSE



ALUMINUM BODY

NOTE
DIMENSIONS SHOWN ARE APPROXIMATE AND ARE SUBJECT TO MINOR DEVIATIONS AS MAY OCCUR OR BE NECESSARY IN CONSTRUCTION. MINOR DETAILS NOT SHOWN.

1. BATTERY CHARGER/COMPRESSOR LOCATED IN FRONT LEFT BODY COMPARTMENT
2. BATTERY CHARGE INDICATOR LOCATED ON D.S. PUMP PANEL
3. DUAL L.E.D. LIGHT STRIPS LOCATED IN HOSE BED
4. ONE FULL WIDTH/DEPTH ADJUSTABLE SHELF IN COMPARTMENTS L51, L53, R51, AND R53
5. ONE FLOOR MOUNTED SLIDE-OUT TRAY IN COMPARTMENT B1
6. SLIDE-OUT TOOL BOARD WITH PEGBOARD PATTERN IN COMPARTMENT TBD
7. CIRCUIT BREAKER PANEL IN COMPARTMENT L53
8. ONE HANNAY ELECTRIC REWIND CORD REEL MODEL 1618-17-18 WITH 200' OF YELLOW 10/3, 3 WIRE

REV	DATE	BY	CH	SABER FR
21JAN21	RHU	NAS		
02DEC20	RHU	NAS		

		JOB NO.	35609
		SCALE	DATE
TITLE	1250-D-1240, 1240 GA MAX WATER, REAR FILL, 171" BODY LADDERS BTWN TANK & SS, DELUGE, GENERATOR	DRAWN BY	SAM
FOR	CHIEFLAND FIRE RESCUE CHIEFLAND, FLORIDA	CHECKED BY	EGO
DWG NO.	35609AD	SHEET SIZE	SHEET NO.
		D	1 OF 1