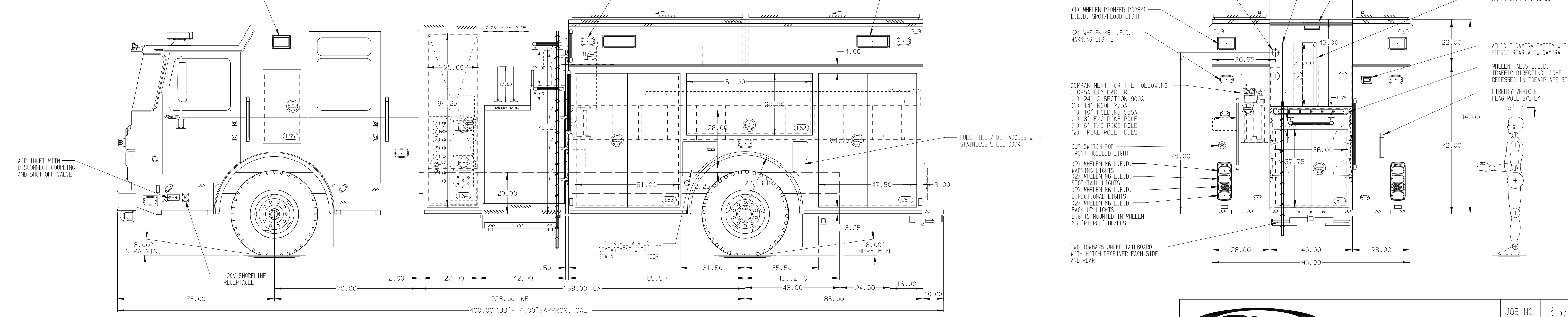


- HOSEBED CAPACITIES**
- ① 250' OF 2.50" D.J. POLY HOSE
 - ② 1250' OF 2.50" D.J. POLY HOSE
 - ③ 550' OF 5.00" D.J. POLY HOSE



STAINLESS STEEL BODY

NOTE
DIMENSIONS SHOWN ARE APPROXIMATE AND ARE SUBJECT TO MINOR DEVIATIONS AS MAY OCCUR OR BE NECESSARY IN CONSTRUCTION. MINOR DETAILS NOT SHOWN.

1. ZIAMATIC SAC-44-E FOLDING WHEEL CHOCKS LOCATED IN L53
2. KUSSMAUL BATTERY CHARGER LOCATED IN CAB BEHIND DRIVER'S SEAT
3. BATTERY CHARGER INDICATOR LOCATED ON DRIVER'S SEAT RISER
4. S/STL SCUFFPLATE AROUND FUEL FILL OPENING
5. ONE FULL WIDTH/DEPTH ADJUSTABLE SHELF IN COMPARTMENTS L51, L53, AND L54; THREE IN R51 AND R53
6. ONE FLOOR MOUNTED SLIDE-OUT TRAY IN COMPARTMENT L51, L53, R51, R53, AND B1
7. ONE FLOOR MOUNTED SLIDE-OUT TRAY SPECIAL SIDE HEIGHT IN COMPARTMENT R52
8. ONE FLOOR MOUNTED SLIDE-OUT TRAY SLIDEMASTER TOOL EXT. IN THE TRANSVERSE BETWEEN L54 AND R54
9. TWO ALUMINUM SWING-OUT TOOLBOARDS WITH PAC TRAC IN COMPARTMENT R52
10. ALUMINUM TOOLBOARD WITH PEGBOARD IN SLIDE OUT TRAY IN COMPARTMENT R54
11. ADJUSTABLE ALUMINUM TOOLBOARD IN SLIDE OUT TRAY IN COMPARTMENT B1
12. ADJUSTABLE TOOLBOARD TRAY IN COMPARTMENT R54
13. PAC TRAC ON BACK WALL OF COMPARTMENTS L51, L52, L53, R51, AND R53
14. VERTICAL PARTITIONS IN COMPARTMENTS R51 AND R53
15. CUTOFF BETWEEN HATCH COMPARTMENT AND BELOW IN L52 AND R51
16. 120V DUPLEX RECEPTACLE LOCATED IN COMPARTMENTS L51, L52, AND R53
17. CASCADE BREATHING AIR SYSTEM BOTTLES IN COMPARTMENTS LH2 AND RH2
18. SPACESAVER MODEL 100A (2) BOTTLE FILL ENCLOSURE LOCATED IN COMPARTMENT L54

		JOB NO.	35603
		SCALE	DATE
1500-D-500P, 171" PUMPER RESCUE BODY, DELUGE LADDERS THRU BODY, (3) CROSSLAYS		DRAWN BY	230CT20
		CHECKED BY	260CT20
WATERLOO FIRE RESCUE WATERLOO, IOWA		SHEET SIZE	SHEET NO.
		DWG NO.	1 OF 1

35603AD

REV	DATE	BY	CH	ENFORCER
15FEB21	SAM	PJP	MAKE	
04JAN21	SAM	PJP	PIERCE	
300CT20	JWO	NPE	MODEL	