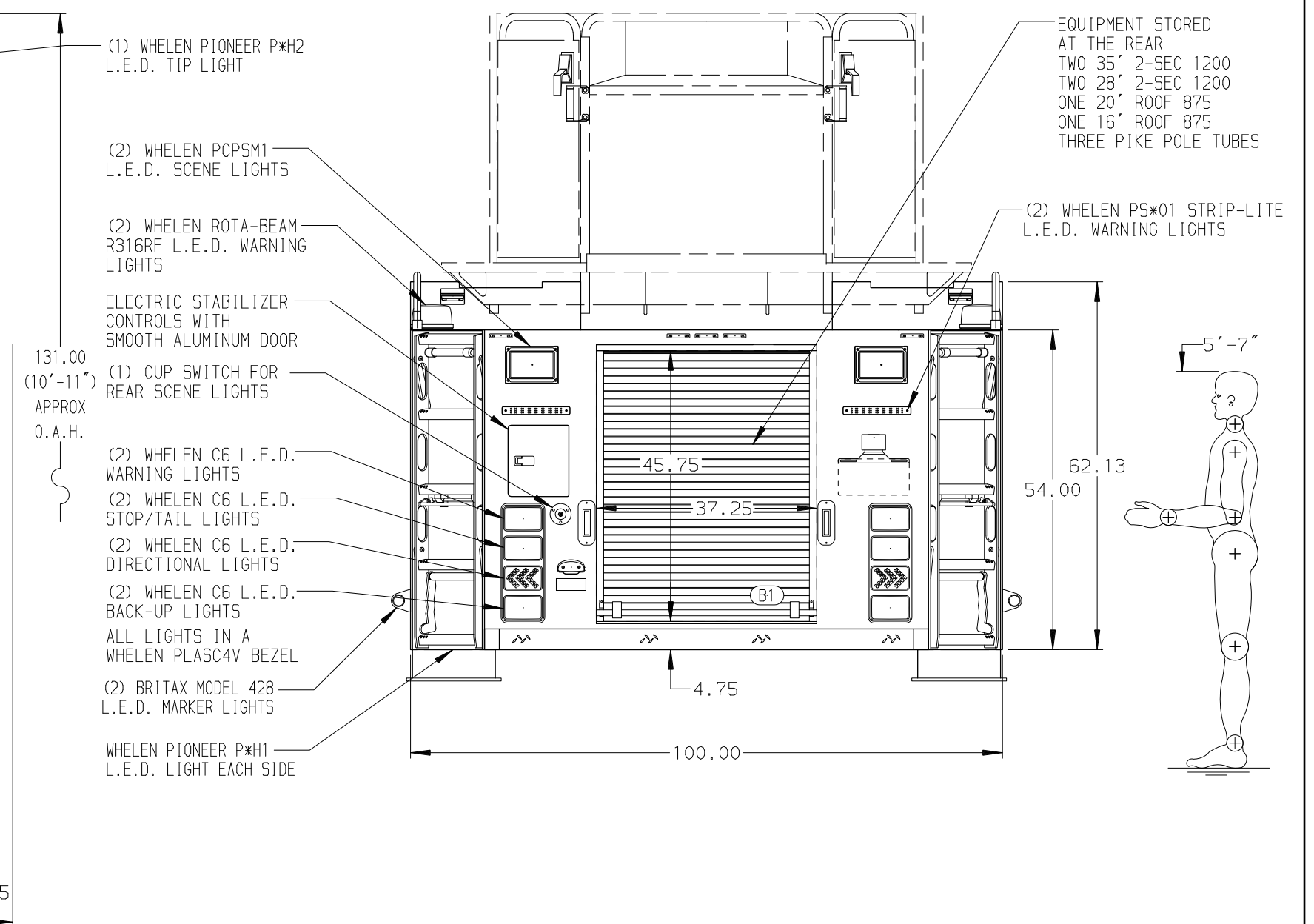
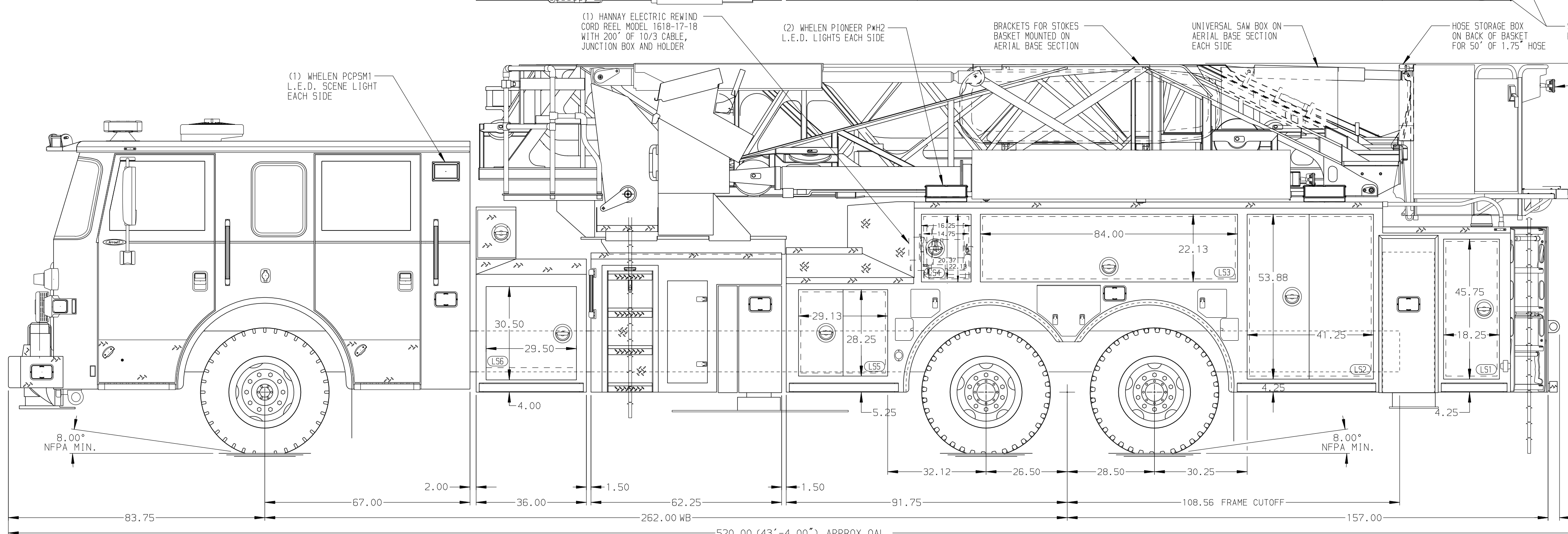
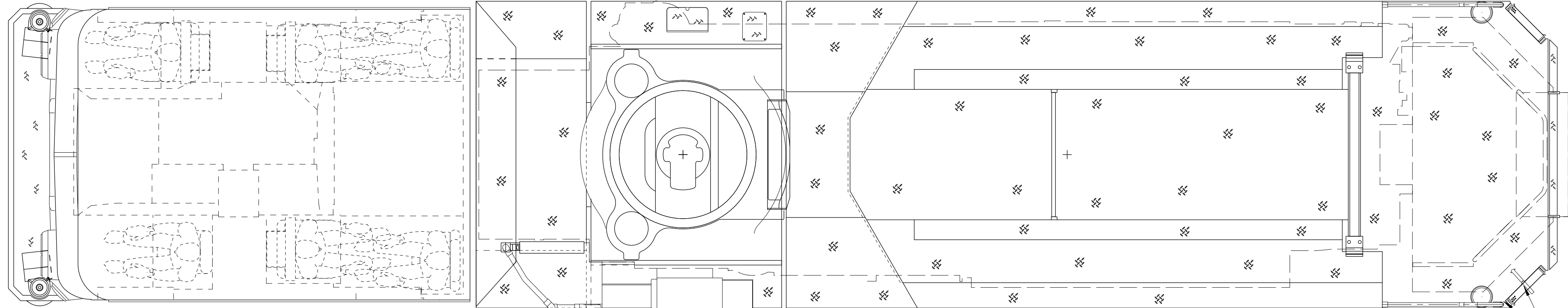


BODY 100' Ascendant Aerial Tower No Pump Alum Body COMPT, LEFT SIDE Full Height Lap Doors COMPT, RIGHT SIDE Full Height Lap Doors	WATER TANK Water Tank Not Required Foam System Foam System Not Required Foam Cell Foam Cell Not Required
---	--



CHASSIS Arrow XT Chassis ENGINE 600 HP Cummins X15 Engine	CAB 6700 Arrow XT Cab BUMPER 15" Extended Painted Aluminum	AXLE, FRONT, CUSTOM 23,000 Lb Dana Axle AXLE, REAR 48,000 Lb Meritor Axle	TRANSMISSION Allison 5th Gen, 4000 EV5 P	PUMPHOUSE 36" Compartment, No Pump, Lap Door PUMP No Pump Required	CROSSLAYS, 1.50" 1.50" Crosslays Not Required CROSSLAYS, 2.50" 2.50" Crosslays Not Required	SPEEDLAYS Speedlays Not Required GENERATOR Harrison 6kW MID Hydraulic in B1
--	---	--	--	---	--	--

NOTE
DIMENSIONS SHOWN ARE APPROXIMATE AND ARE SUBJECT TO MINOR DEVIATIONS AS MAY OCCUR OR BE NECESSARY IN CONSTRUCTION. MINOR DETAILS NOT SHOWN.

- SHORELINE RECEPTACLE WITH KUSSMAUL SUPER AUTO-EJECT LOCATED ON DRIVER SIDE OF THE CAB
- AIR INLET WITH DISCONNECT COUPLING IN THE DRIVER SIDE STEPWELL
- BATTERY CHARGER LOCATED IN COMPARTMENT PER SHOP ORDER
- BATTERY CHARGE INDICATOR LOCATED NEAR DRIVER SEAT RISER WITH BRACKET
- SIX ADJUSTABLE SHELVES IN COMPARTMENTS PER SHOP ORDER
- ONE FLOOR MOUNTED 2-WAY SLIDE-OUT TRAY IN COMPARTMENTS PER SHOP ORDER
- ONE ZIOMATIC SCBA HOLDER BRACKET MOUNTED PER SHOP ORDER
- CIRCUIT BREAKER PANEL LOCATED IN COMPARTMENT PER SHOP ORDER
- TWO 120V DUPLEX RECEPTACLES LOCATED PER SHOP ORDER
- NON-RAISED AERIAL PEDESTAL
- 120V POWER TO AERIAL BASKET
- 3-IN-1 LVECOMBO BRACKETS AT AERIAL BASKET

MAX. O.A.H. = 128.00" (10'-11")

Pierce MANUFACTURING INC.

JOB NO. 35599

SCALE 1:24 DATE

DRAWN BY TKA 03SEP20

CHECKED BY CRI 4SEP20

SHEET SIZE D SHEET NO. 1 OF 1

CHASSIS DATA
TITLE 100' ASCENDANT AERIAL TOWER AND BODY ASSEMBLY
NO PUMP, NO TANK
MAKE PIERCE
FOR PROVIDENCE FIRE DEPARTMENT
PROVIDENCE, RHODE ISLAND
MODEL ARROW XT
DWG NO. 35599AD