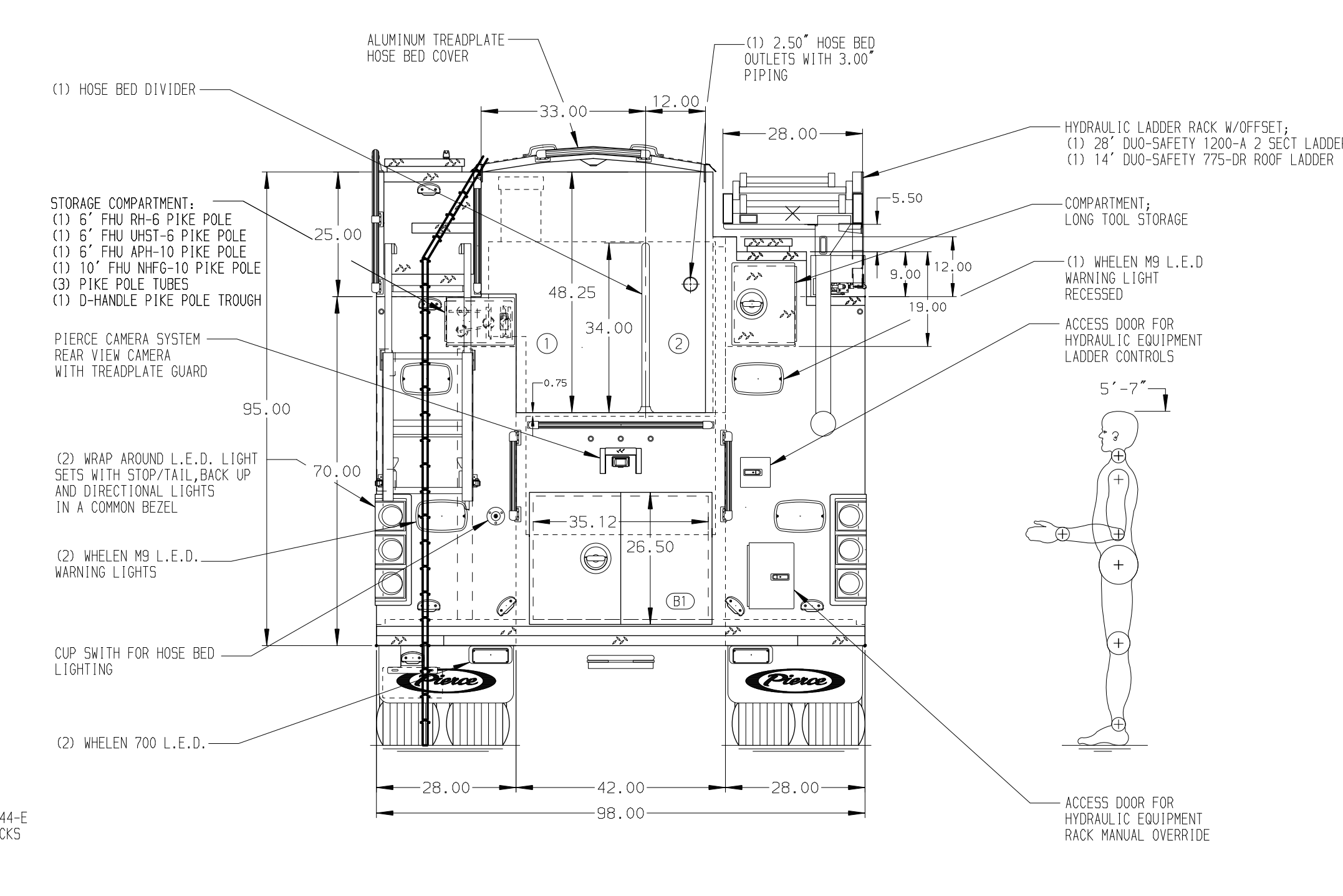
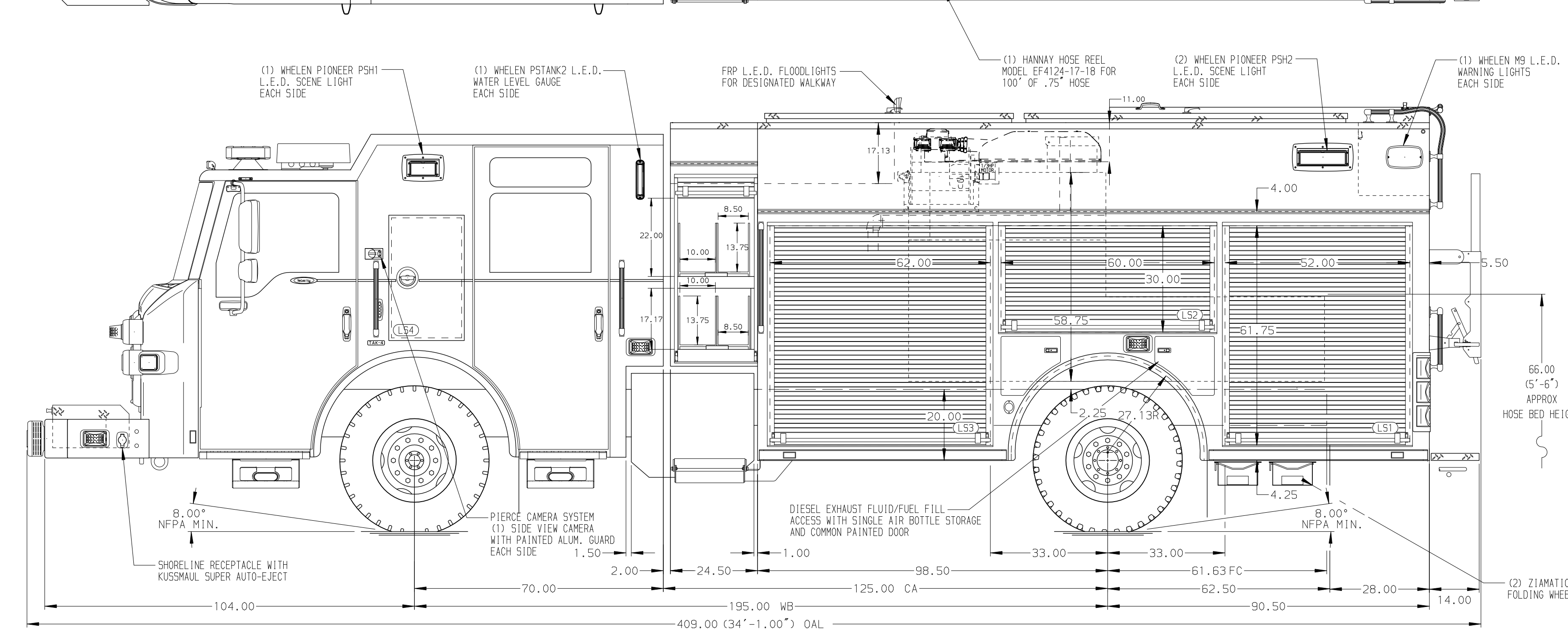


HOSEBED CAPACITIES
 ① - 1000' OF 5.00\"/>



ALUMINUM BODY MAX. O.A.L. 409" MAX. O.A.H. 126" SIDE ROLL AND FRONTAL IMPACT PROTECTION

NOTE
 DIMENSIONS SHOWN ARE APPROXIMATE AND ARE SUBJECT TO MINOR DEVIATIONS AS MAY OCCUR OR BE NECESSARY IN CONSTRUCTION. MINOR DETAILS NOT SHOWN.

- BATTERY CHARGER LOCATED IN COMPARTMENT LS3
- BATTERY CHARGE INDICATOR LOCATED NEAR DRIVER'S SEAT RISER WITH BRACKET
- DUAL L.E.D. LIGHT STRIPS LOCATED IN HOSE BED
- TWO FULL WIDTH/DEPTH ADJUSTABLE SHELVES IN COMPARTMENT(S); LS1, THREE IN RS1, FOUR IN RS3
- ONE ADJUSTABLE TILT/SLIDE-OUT TRAY LOCATED IN COMPARTMENT LS2
- ONE FLOOR MOUNTED SLIDE-OUT TRAY IN COMPARTMENT(S); RS1 & LS1
- ONE CATCH DRAWER ASSEMBLY LOCATED IN COMPARTMENT LS3
- SWING-OUT TOOL GRID SYSTEM IN COMPARTMENT RS2
- PARTITION BETWEEN COMPARTMENTS LS1/BI AND RS1/BI
- STORAGE FOR LITTLE GIANT 17' LADDER IN COMPARTMENTS RS3
- 120V DUPLEX RECEPTACLE LOCATED IN COMPARTMENT LS3
- CONCEALED DOOR LOCK SWITCH, UNDER LEFT FRONT OF BUMPER
- AUTOMATIC TIRE CHAINS - 18 STRAND
- ONE VERTICAL PARTITION LOCATED IN HATCH COMPARTMENT LH2

REV	DATE	BY	CH	VELOCITY
1	10MAY21	JWO	CWI	CHASSIS DATA
2	09FEB21	JWO	JGO	MAKE
3	08JAN21	JWO	JGO	PIERCE
4	02OCT20	JRC	KOU	MODEL

TITLE	1500-D-700P, 189" RESCUE PUC, (3) X-LAYS, (1) DEADLAY HYDRAULIC LADDER RACK RS, BOOSTER REEL, DELUGE	JOB NO.	35595 01-04
	FOR	COTTEVILLE FIRE PROTECTION DISTRICT COTTEVILLE, MISSOURI	SCALE
DWG NO.	35595AD	DRAWN BY	JRC
		CHECKED BY	KOU
		SHEET SIZE	D
		SHEET NO.	1 OF 1