

# Pumper, PUC

## BODY

Pumper, PUC, Aluminum

## CHASSIS

Enforcer Chassis, PUC

## CHASSIS AXLE, FRONT, CUSTOM

18,000 Lb Meritor Axle

## AXLE, REAR

27,000 Lb Meritor Axle

## ENGINE

450 HP Cummins L9 Engine

## TRANSMISSION

Allison 5th Gen, 3000 EVS P

## BUMPER

19" Extended Painted Steel

## CAB

7010 Enforcer Cab, PUC

## BODY

### WATER TANK

1000 Gallon Poly Water Tank

### COMPT, PUMPER, REAR

33.50" FF RollUp Rear Compt w/Tailboard, PUC

### COMPT, PUMPER, LEFT SIDE

189" RollUp Full Height & Depth Front & Rear, PUC

### COMPT, PUMPER, RIGHT SIDE

189" RollUp Full Height & Depth Front & Rear, PUC

## FIRE SUPPRESSION PUMPHOUSE

Control Zone, PUC

### PUMP

1500 GPM Pierce PUC

### CROSSLAYS, 1.50"

(2) 1.50", Poly Trays, 200'

### CROSSLAYS, 2.50"

(1) 2.50", Poly Tray, 200'

### GENERATOR

Generator Not Required

### Foam System

Foam System Not Required

### Foam Cell

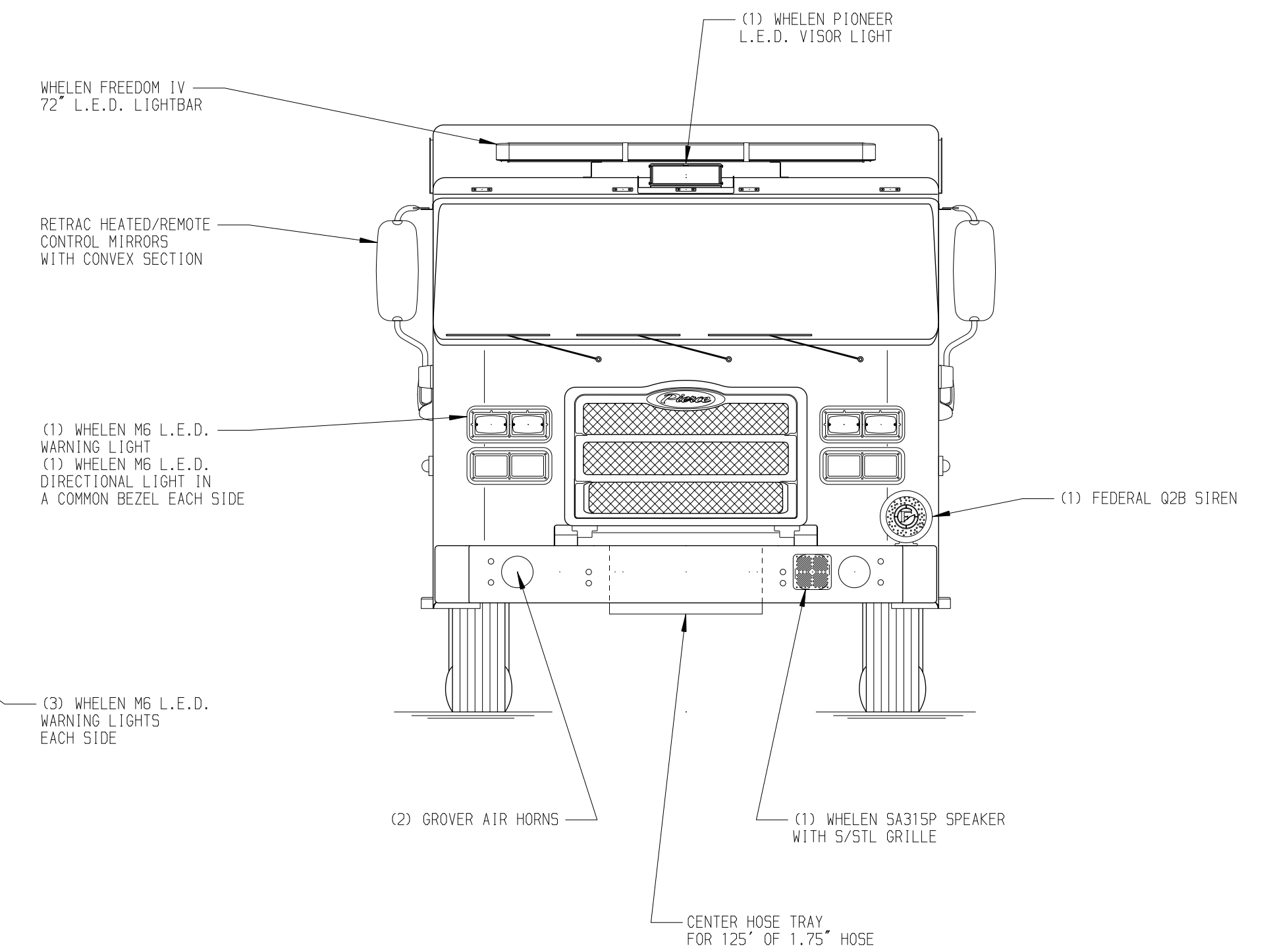
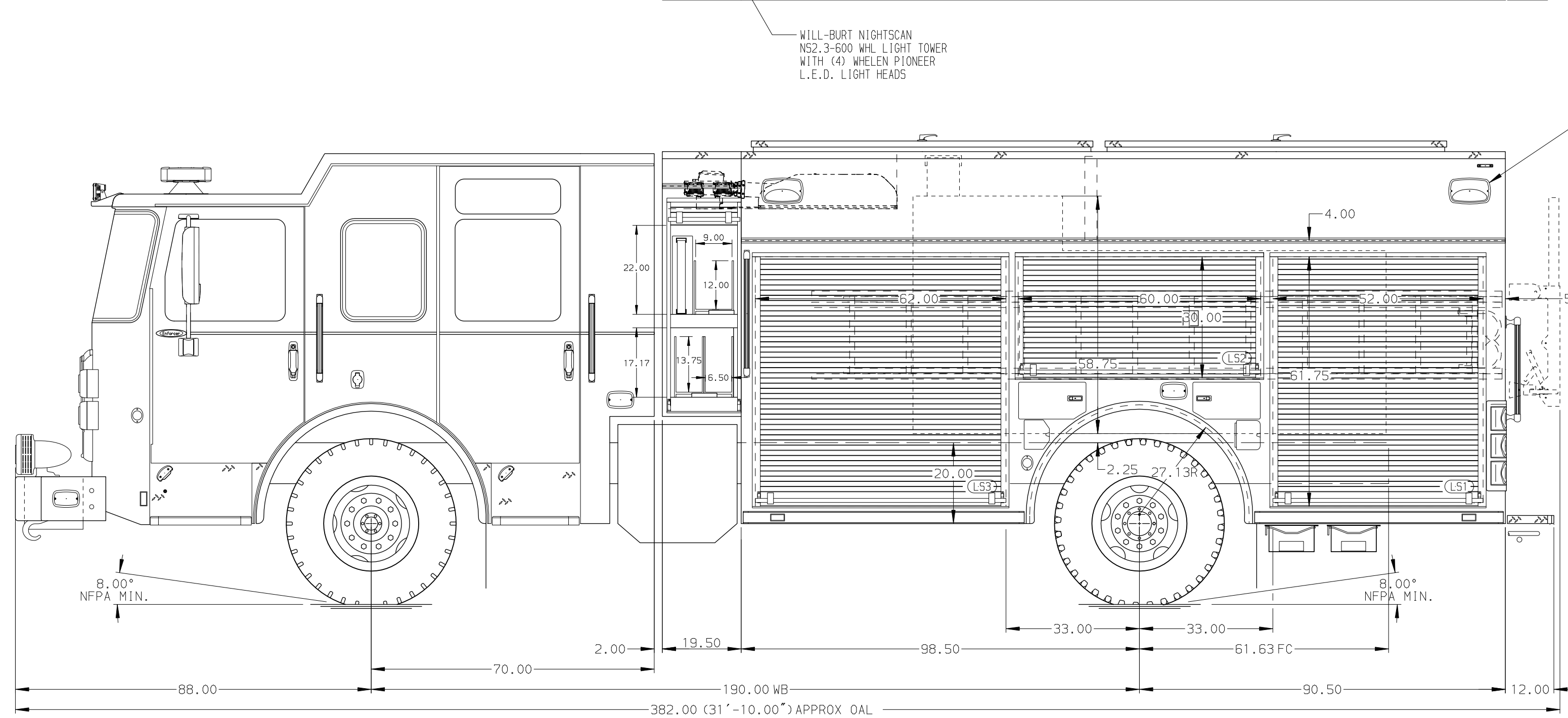
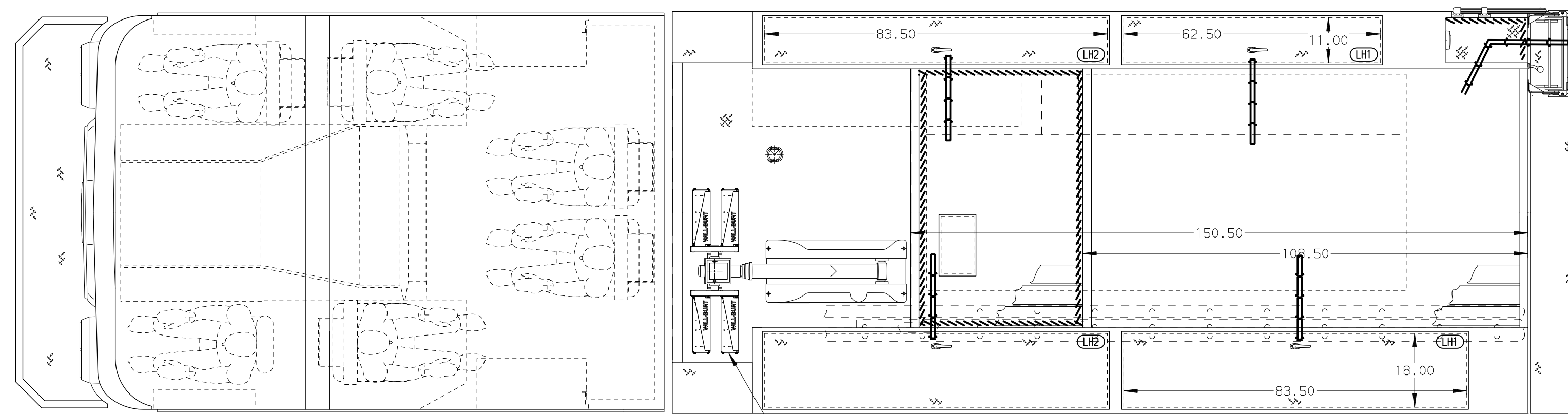
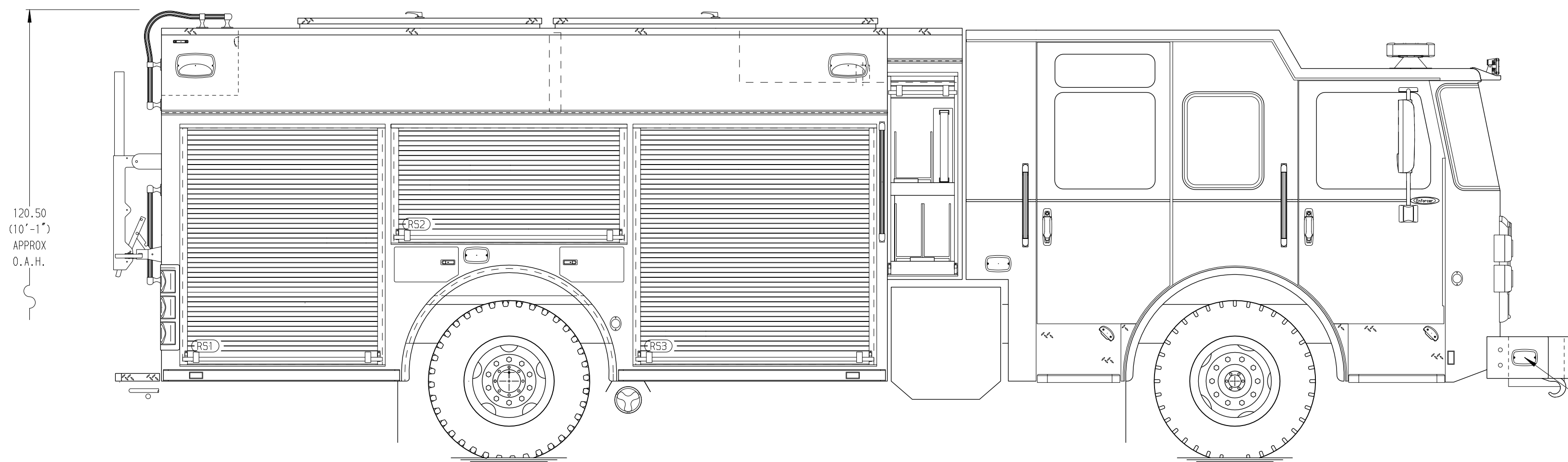
Foam Cell Not Required

Side Roll and Frontal Impact Protection

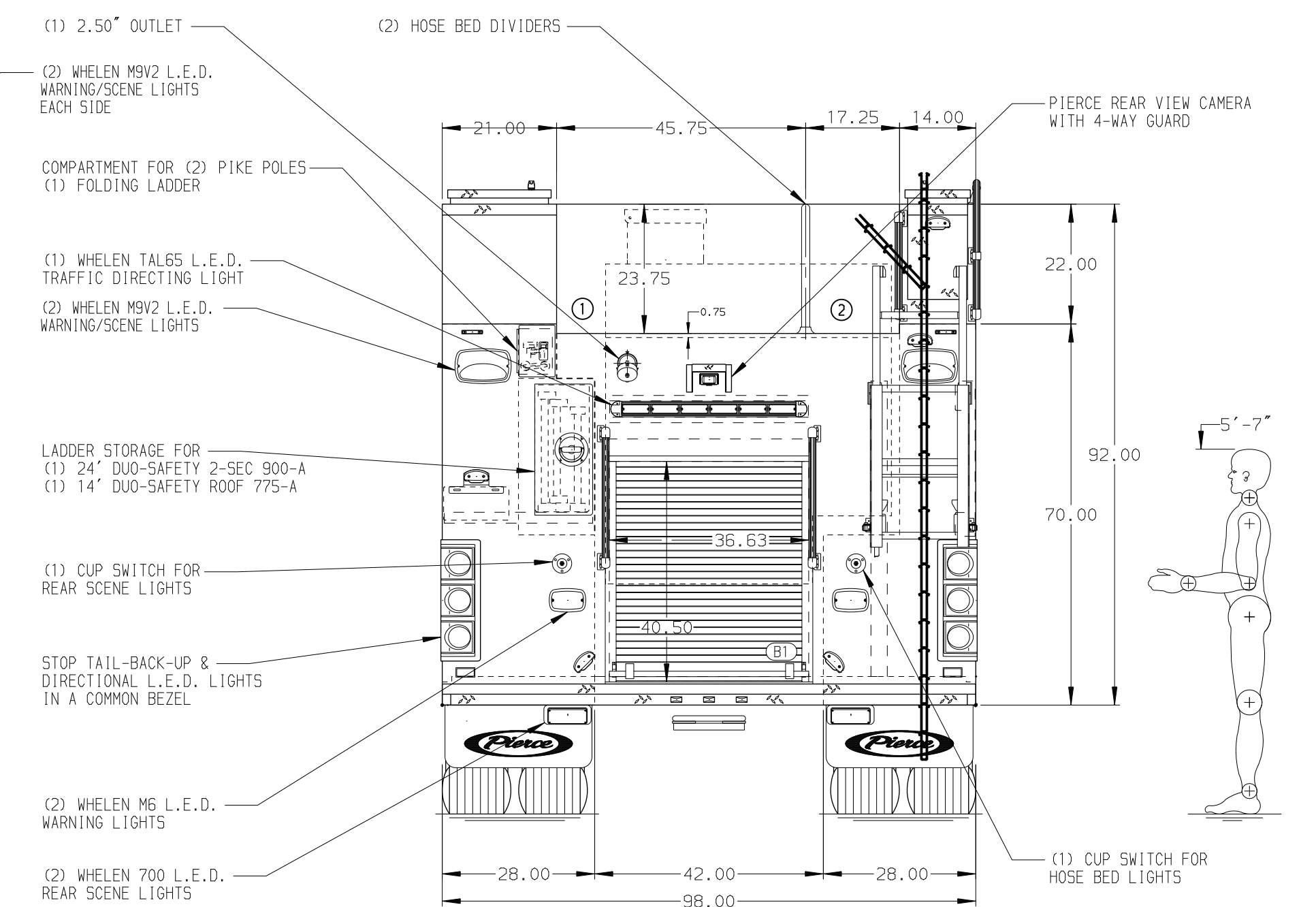
### NOTE

DIMENSIONS SHOWN ARE APPROXIMATE AND ARE SUBJECT TO MINOR DEVIATIONS AS MAY OCCUR OR BE NECESSARY IN CONSTRUCTION. MINOR DETAILS NOT SHOWN.

- ONE 1.50" OUTLET WITH 2.00" PIPING AND SWIVEL LOCATED IN CENTER BUMPER TRAY
- SHORELINE RECEPTACLE WITH KUSSMALL SUPER AUTO-EJECT LOCATED ON DRIVER SIDE OF THE CAB
- AIR INLET WITH DISCONNECT COUPLING IN THE DRIVER SIDE STEPWELL
- BATTERY CHARGER LOCATED BEHIND DRIVER'S SEAT
- BATTERY CHARGE INDICATOR LOCATED ON THE DRIVER SIDE SEAT RISER
- SEVEN ADJUSTABLE SHELVES IN COMPARTMENTS PER SHOP ORDER
- THREE FLOOR MOUNTED SLIDE-OUT TRAY IN COMPARTMENT PER SHOP ORDER
- ONE TOOL GRID SYSTEM IN COMPARTMENT PER SHOP ORDER



HOSEBED CAPACITY	
BED 1	1500' OF 2.50" D.J. POLY HOSE
BED 2	400' OF 1.50" D.J. POLY HOSE



		JOB NO.	35589
		SCALE	DATE
<b>Pierce MANUFACTURING INC.</b>		TITLE	Pierce PUC Pumper Approval Drawing
		FOR	Algood Fire Department
		DWG NO.	35589AD
		CHECKED BY	COL 60CT20
		SHEET SIZE	SHEET NO.
			D 1 OF 1

REV	DATE	BY	CH	ENFORCER
17MAR21	MMF	COL		CHASSIS DATA
18DEC20	MMF	COL		PIERCE
25NOV20	MMF	COL		MODEL