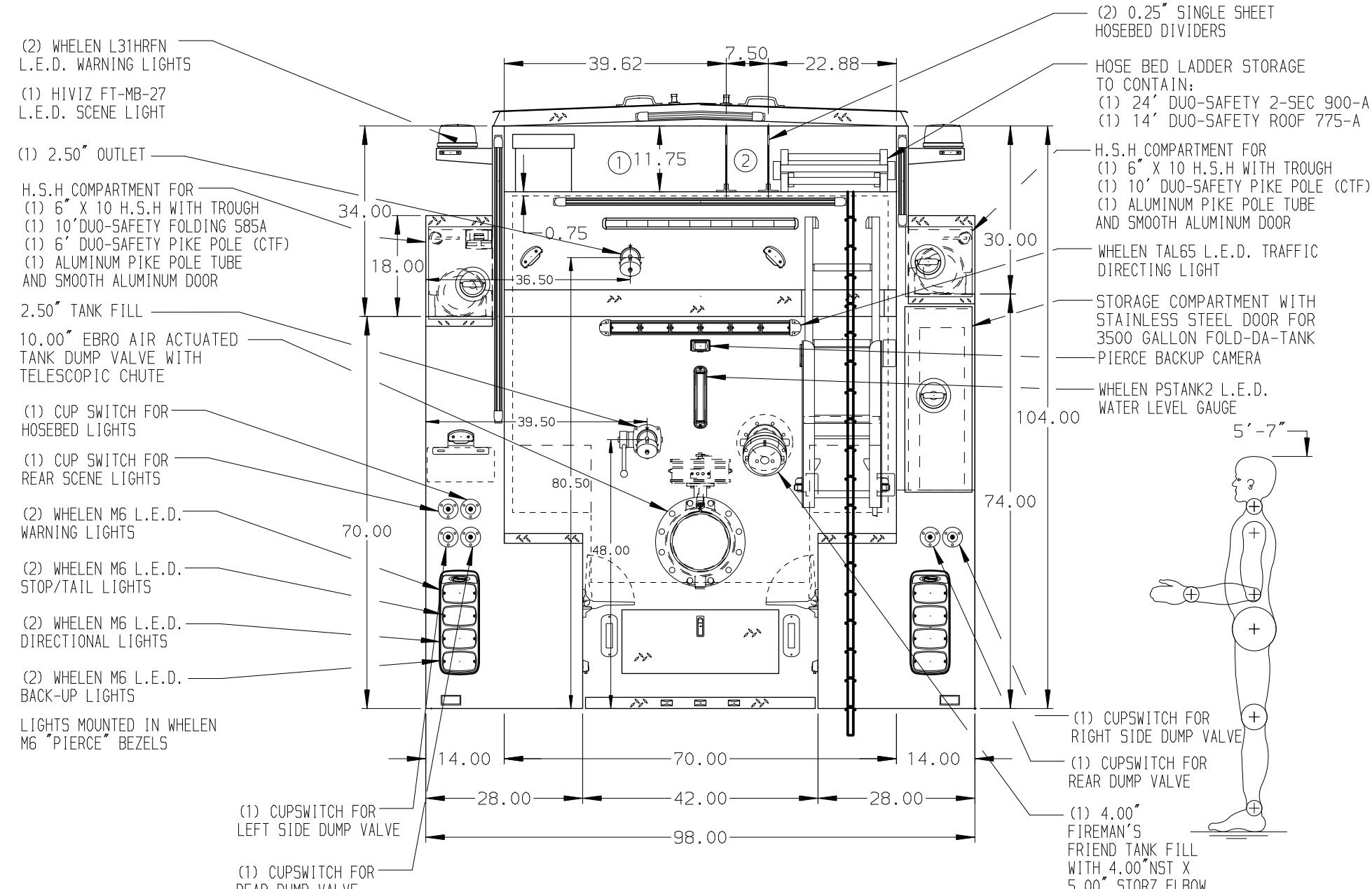


HOSEBED CAPACITIES
 ① 1200' OF 3.00" D.J. POLY HOSE
 ② 400' OF 1.75" D.J. POLY HOSE



ALUMINUM BODY

SIDE ROLL & FRONTAL PROTECTION

NOTE
 DIMENSIONS SHOWN ARE APPROXIMATE AND ARE SUBJECT TO MINOR DEVIATIONS AS MAY OCCUR OR BE NECESSARY IN CONSTRUCTION. MINOR DETAILS NOT SHOWN.

- BATTERY CHARGER/COMPRESSOR LOCATED IN COMPARTMENT L54
- BATTERY CHARGE INDICATOR LOCATED NEAR DRIVER'S SEAT RISER WITH BRACKET
- DUAL L.E.D. LIGHT STRIPS LOCATED IN HOSE BED
- PULL STRAPS FOR CROSSLAY ROLLUP DOORS
- TWO FULL WIDTH/DEPTH ADJUSTABLE SHELF IN COMPARTMENTS L51, L53 AND R52
- ONE FLOOR MOUNTED SLIDE-OUT TRAY IN COMPARTMENTS L51 AND R51
- THREE ADDITIONAL POLY TRAY SHIPPED LOOSE
- 120V 6-PLACE RECEPTACLE STRIP LOCATED IN EACH EMS CABINET
- VANNER BRAVO INVERTER LOCATED IN COMPARTMENT R52
- ONE SWING-OUT TOOLBOARD WITH PEG BOARD LOCATED IN COMPARTMENT L52
- PEGBOARD MOUNTED ON BACK WALL OF COMPARTMENT R52
- TWO ADJUSTABLE SLIDE-OUT TRAYS IN COMPARTMENT L54

REV	DATE	BY	CH	CHASSIS DATA	TITLE
1	16FEB21	LME	CSH	MAKE	1500-D-2980P, 2950 GAL WATER W/30 GAL FOAM, 244" PUC TANKER, LADDERS IN HOSEBED, (3) CROSSLAYS, HUSKY 3
2	25JAN21	LME	CSH	PIERCE	FOR MINOT RURAL FIRE DEPARTMENT
3	22JAN21	LME	CSH	MODEL VELOCITY FR	MINOT, NORTH DAKOTA

Pierce MANUFACTURING INC.

JOB NO. 35572

SCALE 1:24 DATE

DRAWN BY LME 210CT20

CHECKED BY KOU 280CT20

SHEET SIZE D SHEET NO. 1 OF 1

DWG NO. 35572AD