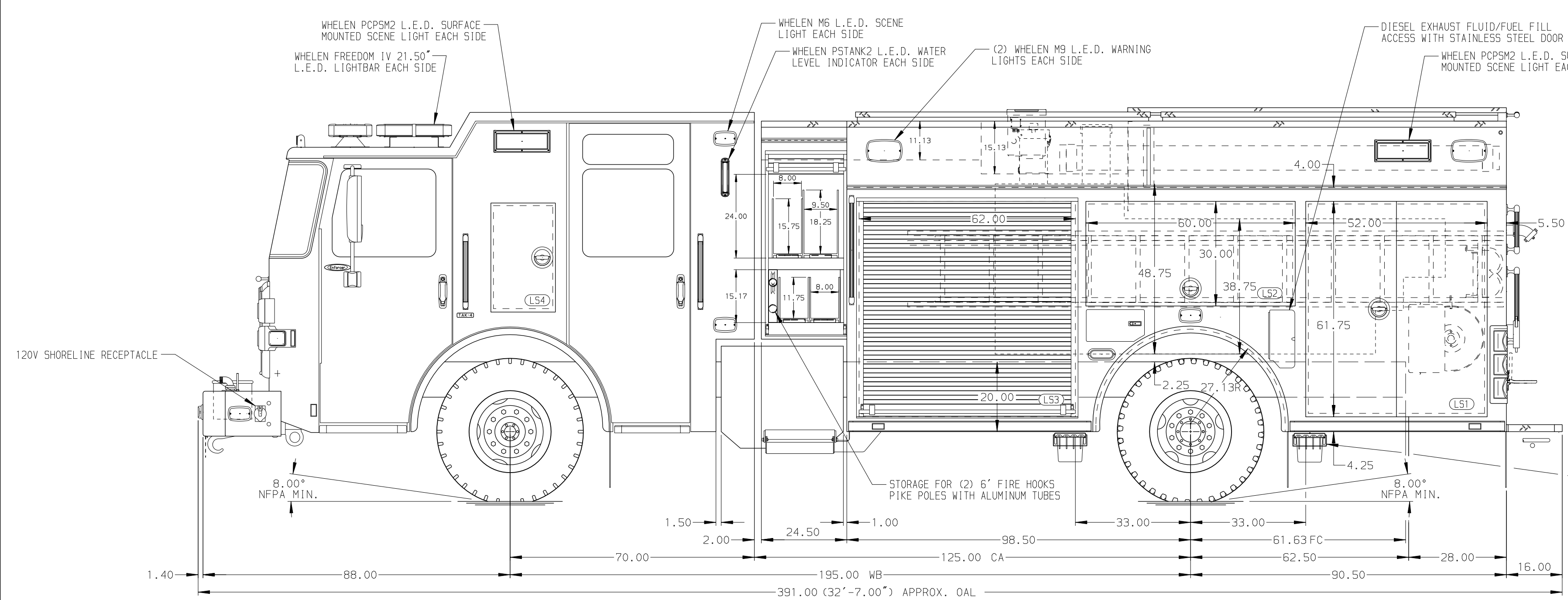
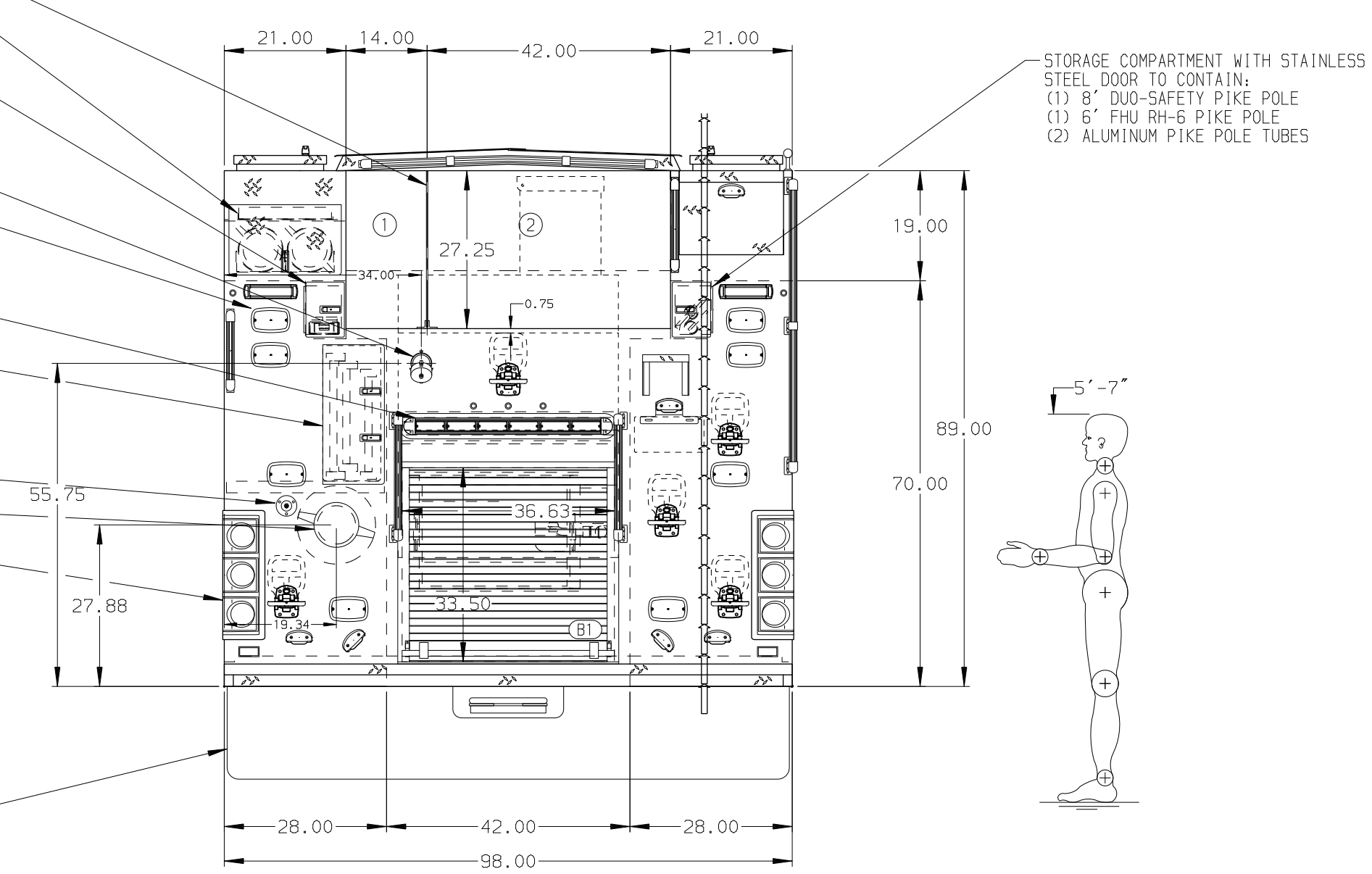


- HOSEBED CAPACITIES**
- ① 500' OF 3.00" D.J. POLY HOSE
  - 100' OF 2.00" D.J. POLY HOSE BUNDLE WITH GATED WYE
  - ② 1300' OF 5.00" RUBBER HOSE



- 0.25" ANGLED HOSEBED DIVIDER WITH HAND HOLD
- STORAGE COMPARTMENT WITH SMOOTH ALUMINUM DOOR TO CONTAIN: (2) 6"x10" HARD SUCTION HOSE (CTF) (1) 16"x2"x72" BACKBOARD
- STORAGE COMPARTMENT WITH STAINLESS STEEL DOOR TO CONTAIN: (1) 10" DUO-SAFETY FOLDING 585-A
- 2.50" OUTLET WITH 2.50" PIPING
- (6) WHELEN M6 L.E.D. WARNING LIGHTS



ALUMINUM BODY    MAXIMUM O.A.H. 118.00"    MAXIMUM O.A.L. 391.00"    SIDE ROLL AND FRONTAL IMPACT PROTECTION

**NOTE**  
DIMENSIONS SHOWN ARE APPROXIMATE AND ARE SUBJECT TO MINOR DEVIATIONS AS MAY OCCUR OR BE NECESSARY IN CONSTRUCTION. MINOR DETAILS NOT SHOWN.

- 1. ONSPO TIRE CHAINS PROVIDED AT THE REAR
- 2. AIR INLET/OUTLET WITH DISCONNECT FITTING LOCATED ON LEFT SIDE PUMP PANEL
- 3. BATTERY CHARGER WITH DIGITAL DISPLAY LOCATED IN CAB EMS COMPARTMENT
- 4. BATTERY CHARGER INDICATOR LOCATED IN DRIVER'S SEAT AREA
- 5. AMDR AY-LB-12HD L.E.D. WALKING SURFACE LIGHTS LOCATED IN THE CARGO AREA
- 6. PULL STRAP FOR DOORS ON CROSSLAY DOORS

REV	DATE	BY	CH	ENFORCER
18AUG21	LME	JBL		CHASSIS DATA
09AUG21	LME	JBL		MAKE
16APR21	LME	JBL		PIERCE
17MAR21	LME	JBL		MODEL

		JOB NO.	35560
		SCALE	01-02
<b>TITLE</b> 1500-D-700P, 660 GAL. WATER/40 GAL. FOAM CELL, DELUGE 189" PUC RESCUE BODY, LADDERS THRU BODY, HUSKY 3 <b>FOR</b> CHESTERFIELD COUNTY FIRE DEPARTMENT CHESTERFIELD, VIRGINIA		DATE	
		DRAWN BY	LME
<b>DWG NO.</b> 35560AD-SH1		CHECKED BY	JBL
		SHEET SIZE	D
		SHEET NO.	1 OF 1