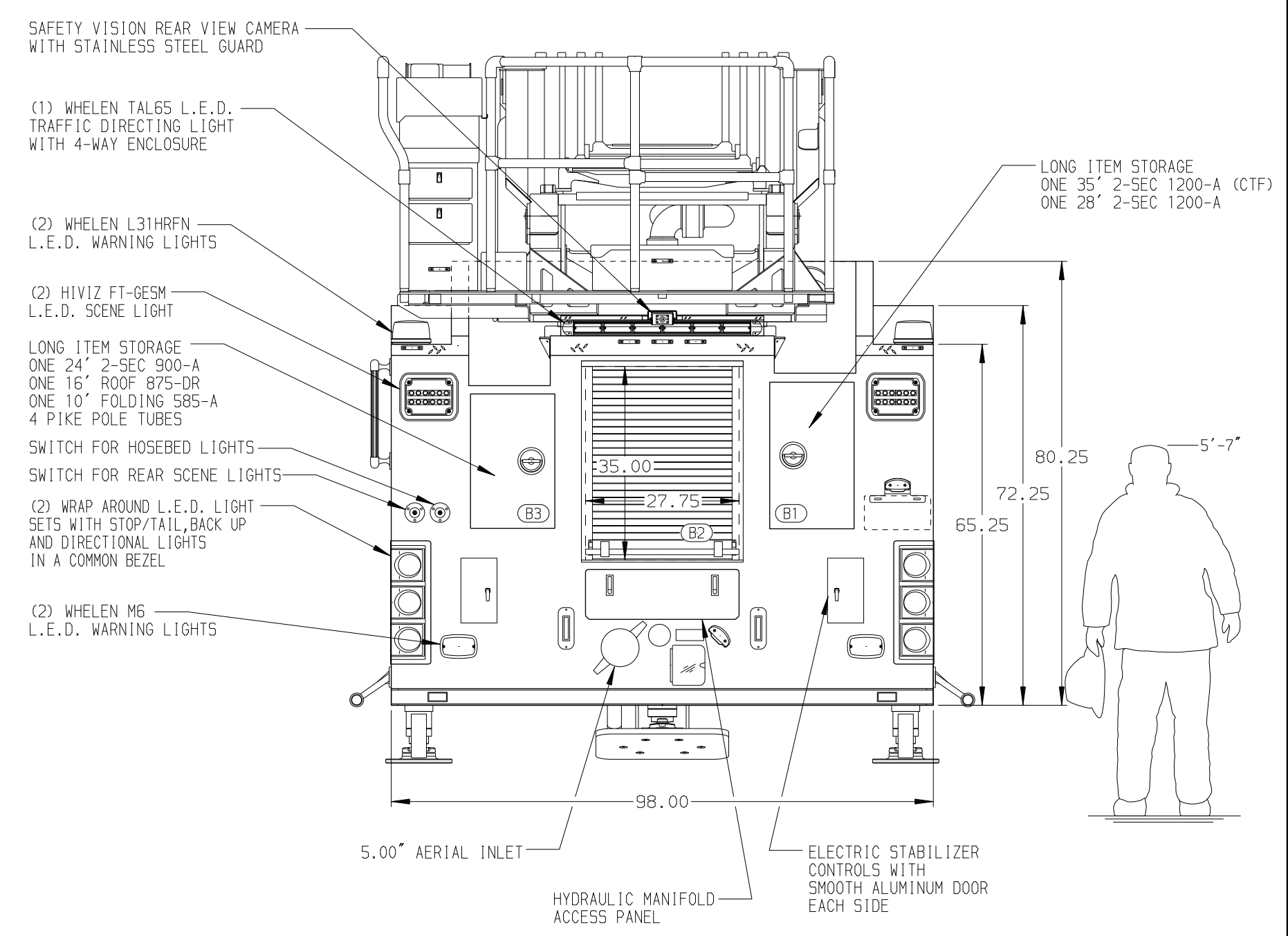
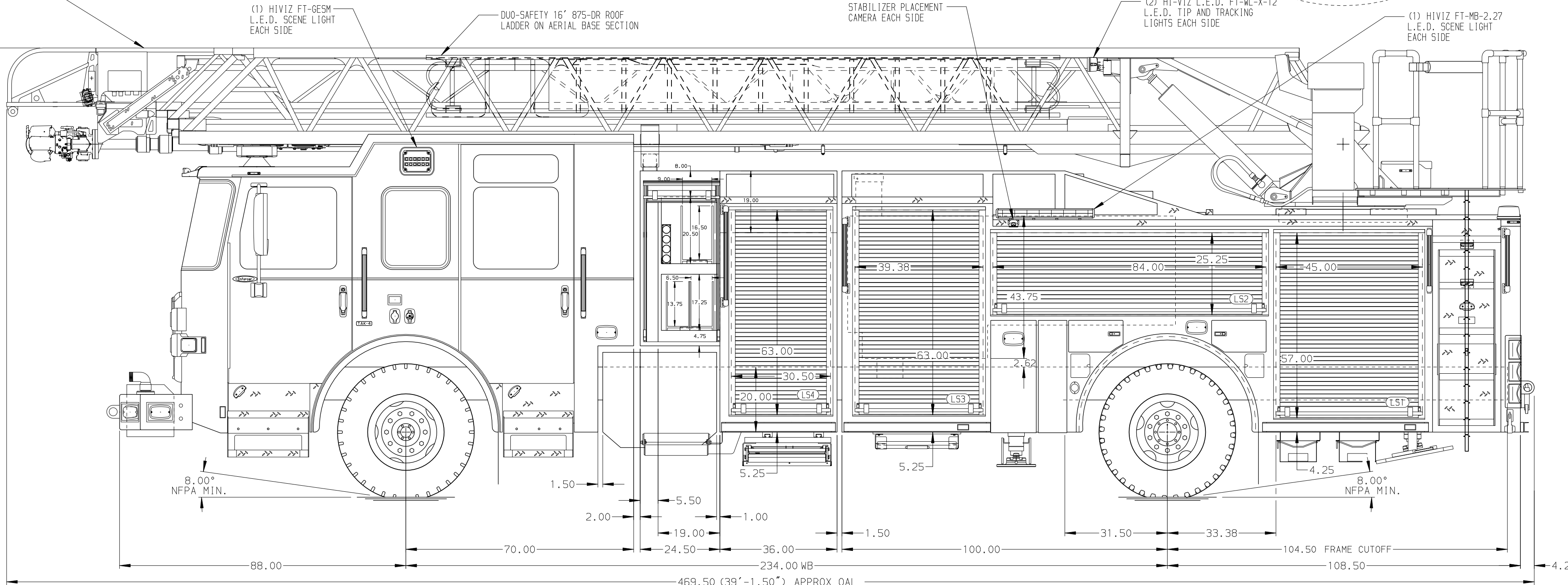
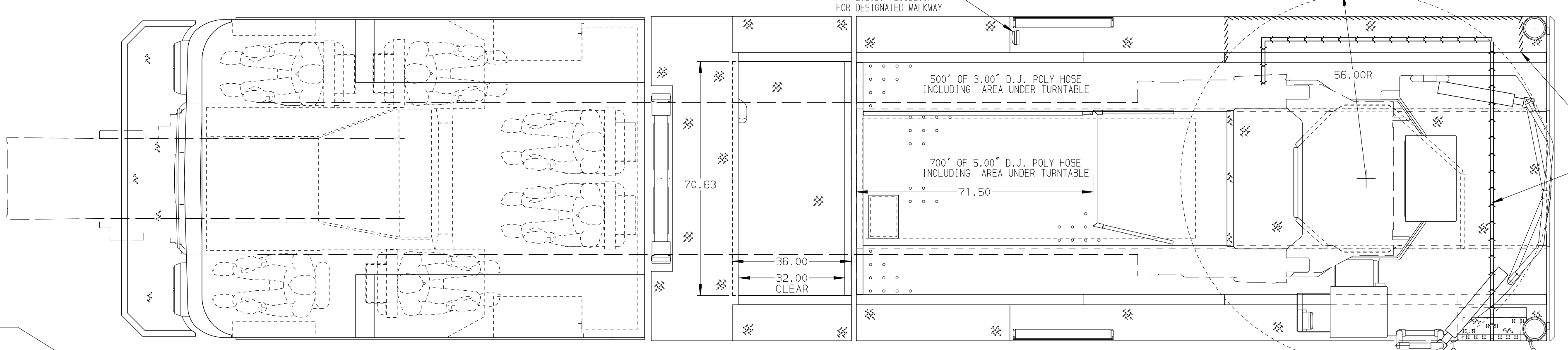


BODY 107' ASL Aluminum Body PUC COMPT, LEFT SIDE FRONT Full Height RollUp Forward COMPT, LEFT SIDE REAR Full Height RollUp Rearward COMPT, RIGHT SIDE FRONT Full Height RollUp Forward COMPT, RIGHT SIDE REAR Full Height RollUp Rearward	WATER TANK 500 Gallon Poly Water Tank Foam System Foam System Not Required Foam Cell Foam Cell Not Required
---	---



CHASSIS Enforcer Chassis, PUC 450 HP Cummins L9 Engine	CAB 7010 Notched Enforcer Cab, PUC 19\"/>
---	--

AXLE, FRONT, CUSTOM 24,000 Lb TAK-4 Axle	TRANSMISSION Allison 5th Gen, 3000 EVS P	PUMPHOUSE Control Zone, PAL/PAP PUC PUMP 1500 GPM Pierce PUC	CROSSLAYS, 1.50\"/>
--	--	--	--------------------------------

SAFETY Side Roll and Frontal Impact Protection	GENERATOR Generator Not Required	CHASSIS DATA TITLE MAKE PIERCE MODEL ENFORCER	JOB NO. 35555
---	--	---	-------------------------

NOTE
DIMENSIONS SHOWN ARE APPROXIMATE AND ARE SUBJECT TO MINOR DEVIATIONS AS MAY OCCUR OR BE NECESSARY IN CONSTRUCTION. MINOR DETAILS NOT SHOWN.

- ONE 2.50\"/>
- SHORELINE RECEPTACLE WITH KUSSMAUL SUPER AUTO-EJECT LOCATED ON DRIVER SIDE OF THE CAB
- AIR INLET WITH KUSSMAUL AUTO-EJECT AND COVER ON DRIVER SIDE OF CAB
- BATTERY CHARGER LOCATED BEHIND THE DRIVER'S SEAT
- BATTERY CHARGE INDICATOR LOCATED ON DRIVER SIDE OF THE CAB
- DUAL L.E.D. LIGHT STRIPS LOCATED IN HOSE BED
- EIGHT ADJUSTABLE SHELVES IN COMPARTMENTS PER SHOP ORDER
- ONE ADJUSTABLE SHELF WITH SPECIAL DEPTH IN COMPARTMENT PER SHOP ORDER
- ONE FLOOR MOUNTED SLIDE-OUT TRAY IN COMPARTMENT PER SHOP ORDER

- ONE SWING-OUT ALUMINUM TOOL BOARD IN COMPARTMENT PER SHOP ORDER
- PULL STRAP ON DOOR IN COMPARTMENTS PER SHOP ORDER
- ONE 120V 6-PLACE RECEPTACLE STRIP LOCATED IN CAB PER SHOP ORDER
- TWO 120V DUPLEX RECEPTACLES LOCATED IN COMPARTMENTS PER SHOP ORDER
- LIFTING EYE ROPE RESCUE ATTACHMENT AT AERIAL TIP
- DC POWER TO AERIAL TIP
- NON-RAISED AERIAL PEDESTAL
- 1500 GPM HIGH FLOW WATERWAY
- NO LIMITED RETRACTION REQUIRED

- TWO ADJ. SLIDE-OUT TRAYS IN COMPARTMENTS PER SHOP ORDER
- ONE CTECH (3) DRAWER ASSEMBLY IN COMPARTMENT PER SHOP ORDER
- ONE VERTICAL DIVIDER IN COMPARTMENT PER SHOP ORDER
- ONE ADJ. VERTICAL PARTITION IN COMPARTMENT PER SHOP ORDER
- PEGBOARD MOUNTED ON BACK WALL OF (2) COMPARTMENTS PER SHOP ORDER

MAXIMUM OVERALL HEIGHT = 142.00" (11'-10")
 MAXIMUM OVERALL LENGTH = 473.00" (39'-5")

Pierce MANUFACTURING INC.	JOB NO. 35555
TITLE 107' ASCENDANT AERIAL LADDER AND BODY ASSEMBLY	SCALE 1:24
DATE 15SEP20	DRAWN BY TKA
FOR TOWNSHIP OF STAFFORD MANAHAWKIN, NEW JERSEY	CHECKED BY CRI
DWG NO. 35555AD	SHEET NO. 1 OF 1