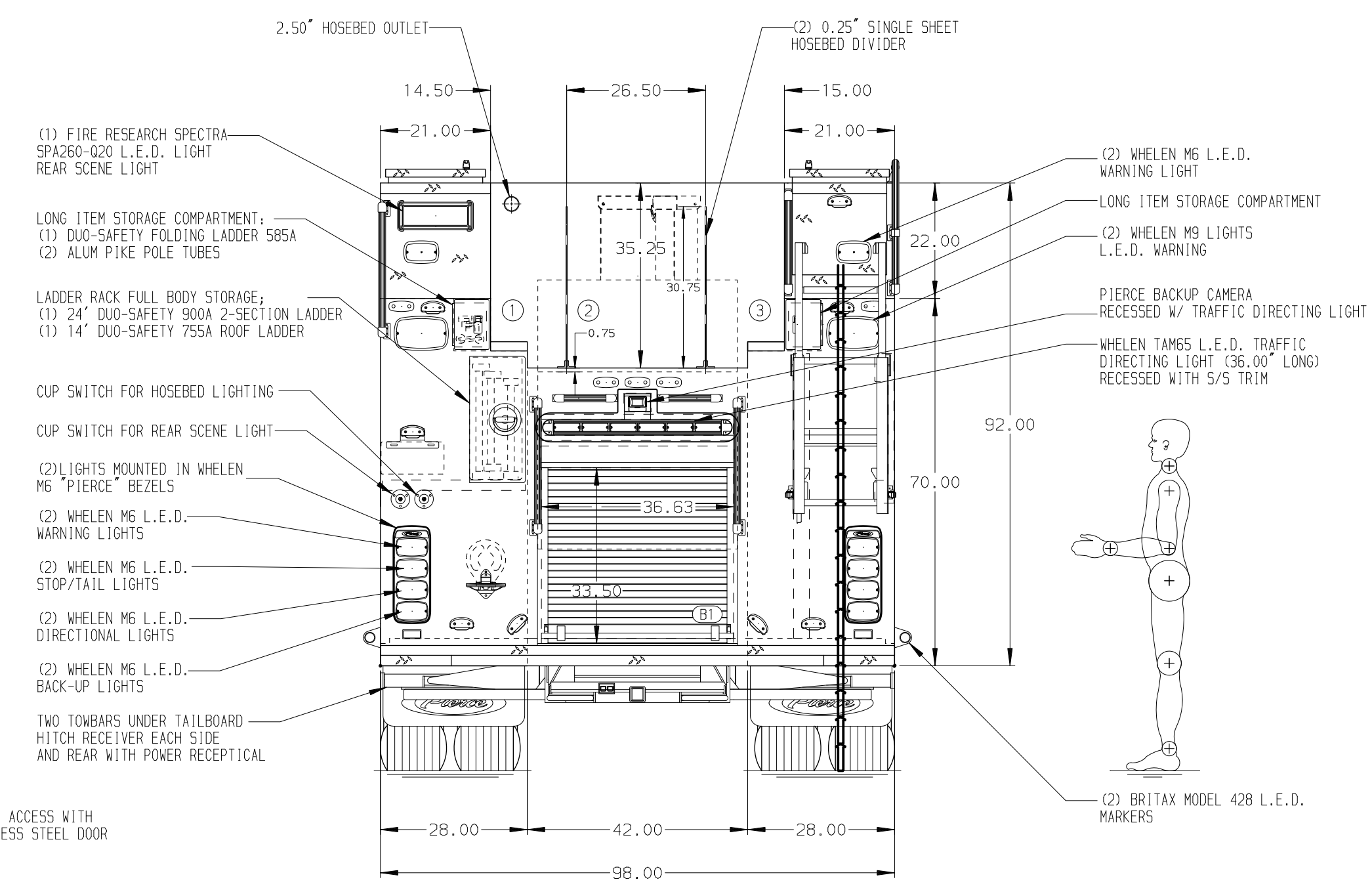


HOSEBED CAPACITIES
 ① 400' OF 2.50\"/>



ALUMINUM BODY

NOTE
 DIMENSIONS SHOWN ARE APPROXIMATE AND ARE SUBJECT TO MINOR DEVIATIONS AS MAY OCCUR OR BE NECESSARY IN CONSTRUCTION. MINOR DETAILS NOT SHOWN.

- BATTERY CHARGER LOCATED BEHIND DRIVER'S SEAT
- BATTERY CHARGER INDICATOR LOCATED ON DRIVER'S SEAT RISER
- DUAL L.E.D. LIGHT STRIPS LOCATED IN HOSE BED
- FULL WIDTH/DEPTH ADJUSTABLE SHELVES TWO IN COMPARTMENTS; LS3 AND RS3 AND ONE IN COMPARTMENTS LS1, LS2, RS1, AND RS2
- ONE ADJUSTABLE SLIDE-OUT TRAY IN COMPARTMENTS; LS3, B1, RS1, AND RS3
- ONE ADJUSTABLE TILT/SLIDE-OUT FULL WIDTH/DEPTH TRAY IN COMPARTMENT; RS2
- ONE FLOOR MOUNTED SLIDE-OUT TRAY IN COMPARTMENTS; LS1 AND RS1
- TWO SLIDE-OUT TOOL BOARDS WITH PEGBOARD PATTERN IN COMPARTMENTS; RS4
- PARTITION BETWEEN COMPARTMENTS LS1/B1 AND RS1/B1
- ALUMINUM PEGBOARD ON BACK WALL OF COMPARTMENTS; LS2
- THREE ADDITIONAL POLY TRAYS SHIPPED LOOSE
- CIRCUIT BREAKER PANEL IN COMPARTMENTS; LS3
- ONE HANNAY ELECTRIC REWIND CORD REEL MODEL 1618-17-18 LOCATED IN COMPARTMENT RH2 WITH QTY OF 200' OF 10/3 BLACK 3 WIRE
- 120V 6-PLACE RECEPTACLE STRIP LOCATED IN ENGINE TUNNEL COVER
- 120V DUPLEX RECEPTACLE LOCATED IN COMPARTMENTS; LS1,LS2,LS3,RS1,RS2,RS3,RS4 & B1

REV	DATE	BY	CH	ENFORCER
25JAN20	LSJ	DTS		MAKE
17DEC20	LSJ	DTS		PIERCE
21OCT20	CDU	KOU		MODEL

		JOB NO.	35554
		SCALE	DATE
TITLE	1500-D-780P, 750 GAL OF WATER W/ 30 GAL FOAM CELL 214\"/>		
FOR	GLOUCESTER TOWNSHIP FIRE DISTRICT #4 BLACKWOOD, NEW JERSEY	DRAWN BY	JRC 140CT20
DWG NO.	35554AD	CHECKED BY	CDU 150CT20
		SHEET SIZE	SHEET NO.
		D	1 OF 1