

129.00
(10'-9")
APPROX
O.A.H.

TOW BAR, UNDER TAILBOARD
RUBRAIL, ALUM EXT,
SIDE & REAR OF BODY
FENDER CROWNS, REAR, SS, WIDER THAN
STANDARD, W/REMOVABLE LINER
MUD FLAPS, WITH LOGO, REAR

OUTLET, 3.00" DELUGE RISER
WITH 3" ANSL, 4 BOLT 5/8 FLANGE MOUNT
MONITOR, AKRON 3426,
NO GROUND BASE
WITH AKRON NOZZEL 2499 QUAD
STACKED TIPS & 3488 SHAPER

LIGHT, WALKING SURFACE,
FRP FLOOD, LED
LIGHT SHIELD, TOP MOUNT,
LED STRIP LIGHTS
(2) SPEEDLAY HOSEBEDS
WITH LIFT-OUT TRAYS
FOR 200' OF 1.75" D.J.
HOSE WITH 2.00" PIPING

RECEPTACLE, BATTERY CHARGING,
CAB STEP AREA, DRIVERS SIDE
SHORELINE 20A 120V, KUSSMAUL
AUTO-EJECT, 091-55-20-120, SUPER

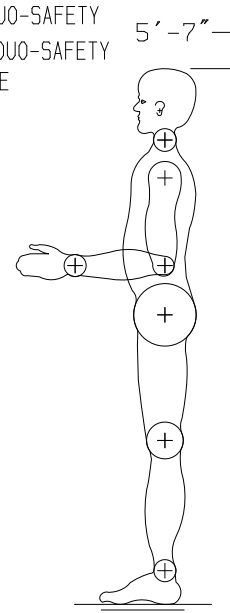
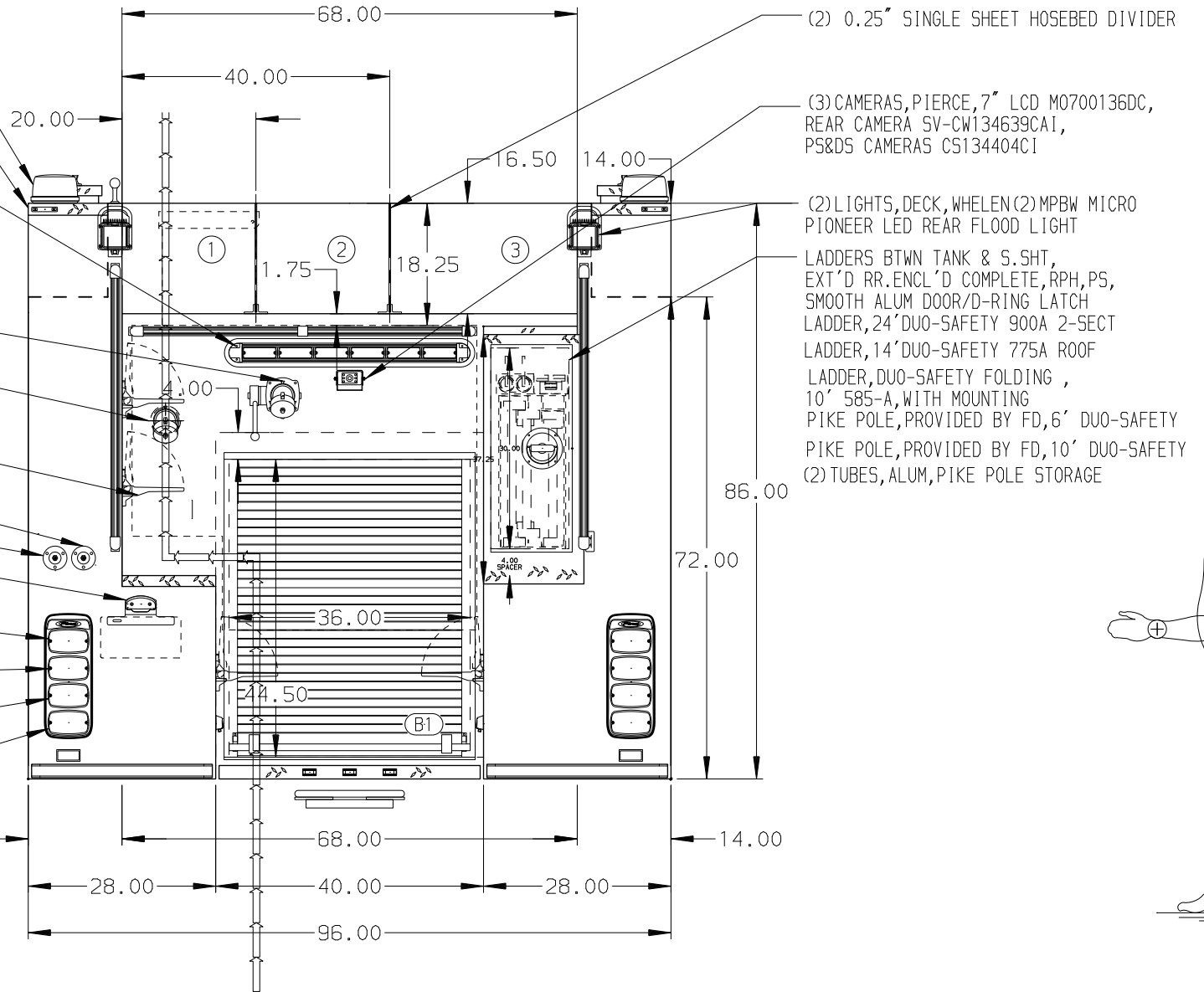
ALUMINUM BODY

NOTE
DIMENSIONS SHOWN ARE APPROXIMATE
AND ARE SUBJECT TO MINOR DEVIATIONS
AS MAY OCCUR OR BE NECESSARY IN
CONSTRUCTION.
MINOR DETAILS NOT SHOWN.

- HOSEBED CAPACITIES**
- ① 500' OF 5.00" D.J. POLY HOSE
 - ② 500' OF 5.00" D.J. POLY HOSE
 - ③ 1000' OF 3.00" D.J. POLY HOSE

- (2) WHELEN L31HRFN LED BEACON,
RED LED WARNING LIGHTS
MOUNTED ON TOP OF COMPT
- LIGHTS, CLEARANCE/MARKER/ID, REAR,
FRP LED BAR & P25 LED, 4 LITS
- WHELEN TALS LED, 36.00" LONG, TACTLS
TRAFFIC DIRECTING LIGHT
RECESSED WITH STAINLESS STEEL TRIM
WALL, REAR, SMOOTH ALUM
W/ALUMINUM 4-WAY BEAVERTAILS
- (1) 2.50" TANK FILL, DIRECT, REAR
- (1) 2.50" REAR OUTLET

- STEPS, FOLDING, REAR OF BODY,
W/LED TRIDENT
- CUP SWITCH, HOSE BED LIGHTS
CUP SWITCH, DECK LIGHTS
- BRACKET, LICENSE PLATE &
LIGHT, P25 LED
- (2) WHELEN M6 L.E.D.
WARNING LIGHTS
- (2) WHELEN M6 L.E.D.
STOP/TAILO LIGHTS
- (2) WHELEN M6 L.E.D.
DIRECTIONAL LIGHTS
- (2) WHELEN M6 L.E.D.
BACK-UP LIGHTS
- LIGHTS MOUNTED IN WHELEN
M6 "PIERCE" BEZELS
- WHEEL CHOCKS, SAC-44-E, FOLDING
MOUNTING BRKTS, CHOCKS, SAC-44-E,
FOLDING, HORIZONTAL



				CHASSIS DATA	TITLE	1500-D-1000 GALLON WATER TANK, 171" FDLER BODY (2) SLAYS, DELUGE, LADDERS THRU BODY	JOB NO.	35536
					FOR	HAGERMAN FIRE DEPARTMENT HAGERMAN, NM	SCALE	1:24
					DWG NO.	35536AD	DRAWN BY	RHU
					REV		CHECKED BY	RWI
							SHEET SIZE	D
							SHEET NO.	1 OF 1
16MAR21	RHU	NAS	MAKE					
04FEB21	RHU	AJA	IHC					
20NOV20	RHU	RWI	MODEL					
			HV607					