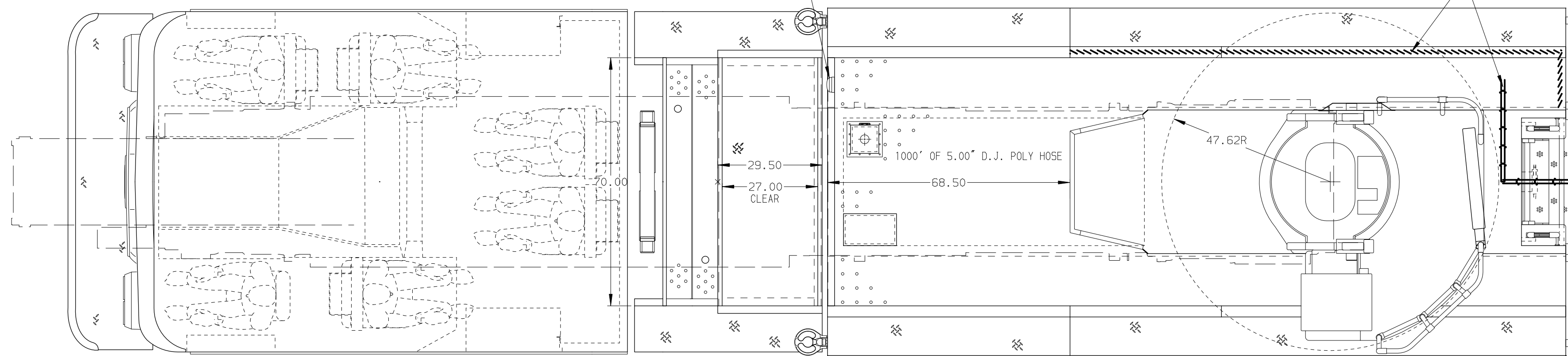


(3) SPECIAL DOUBLE AIR BOTTLE COMPARTMENTS  
14.00" W x 7.50" H x 26.00" D

(1) FRP L.E.D. FLOODLIGHT FOR DESIGNATED WALKWAY

SURFACE DESIGNATION AND PATHWAY MARKINGS

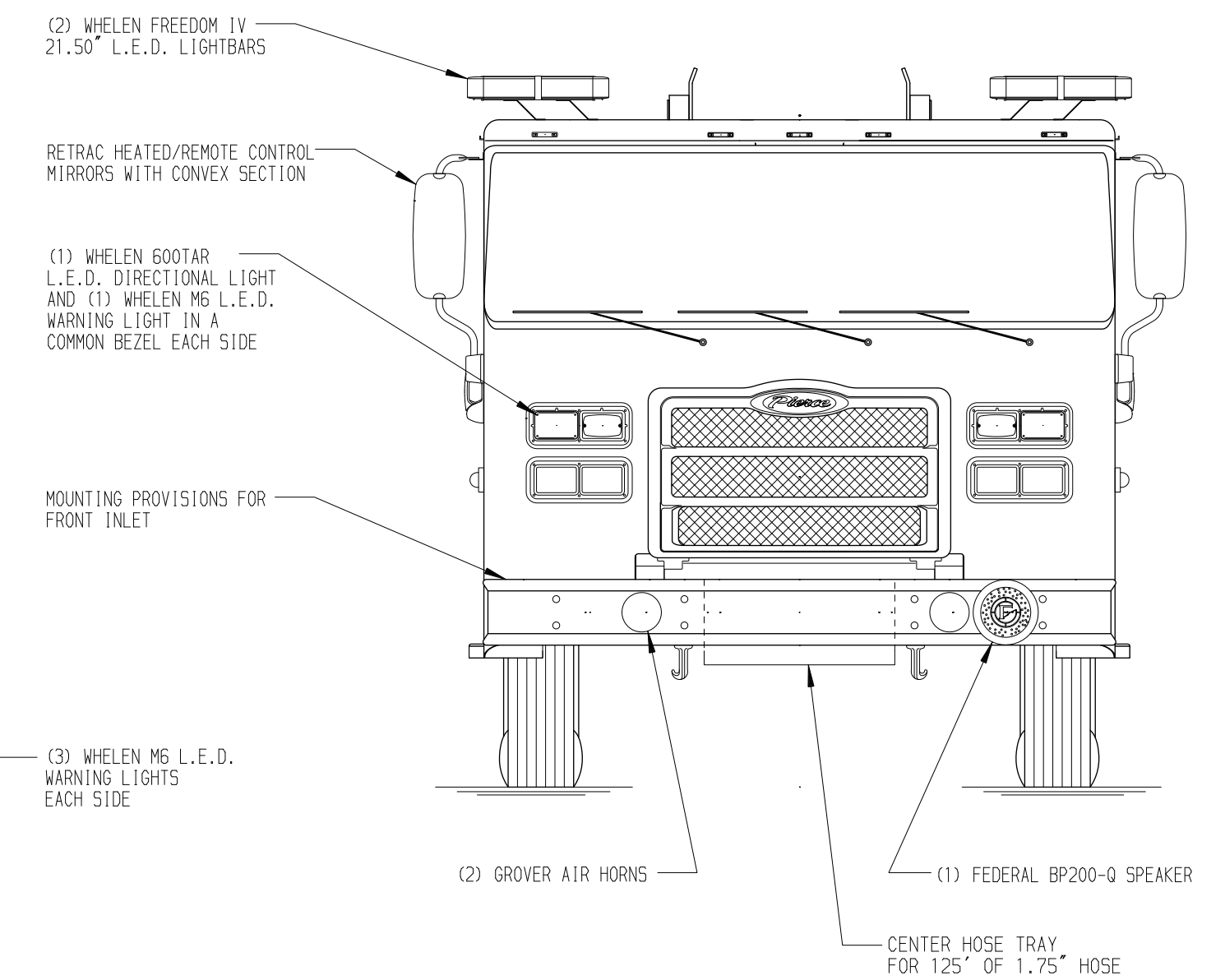


29.50

27.00 CLEAR

1000' OF 5.00" D.J. POLY HOSE

47.62R



(2) WHELEN FREEDOM IV  
21.50" L.E.D. LIGHTBARS

RETRACT HEATED/REMOTE CONTROL MIRRORS WITH CONVEX SECTION

(1) WHELEN 600TAR L.E.D. DIRECTIONAL LIGHT AND (1) WHELEN M6 L.E.D. WARNING LIGHT IN A COMMON BEZEL EACH SIDE

MOUNTING PROVISIONS FOR FRONT INLET

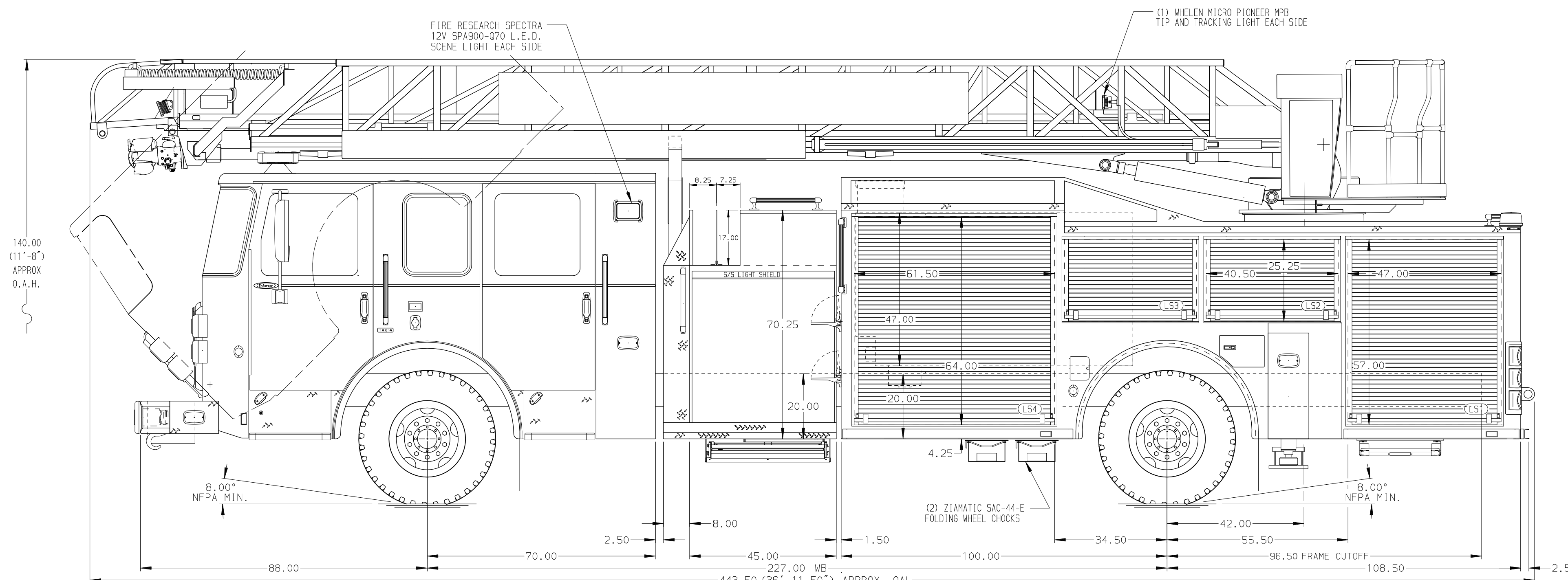
(3) WHELEN M6 L.E.D. WARNING LIGHTS EACH SIDE

(2) GROVER AIR HORNS

(1) FEDERAL BP200-0 SPEAKER

CENTER HOSE TRAY FOR 125' OF 1.75" HOSE

BODY	WATER TANK
75' HAL Aluminum Body	500 Gallon Poly Water Tank
COMPT, LEFT SIDE FRONT	Foam System
Full Height RollUp Forward	Plumbing for Future Husky Foam System
COMPT, LEFT SIDE REAR	Foam Cell
Full Height RollUp Rearward	20 Gallon Foam Cell, Non-Reduced Water
COMPT, RIGHT SIDE FRONT	
Full Height RollUp Forward	
COMPT, RIGHT SIDE REAR	
Full Height RollUp Rearward	



FIRE RESEARCH SPECTRA 12V SP9900-070 L.E.D. SCENE LIGHT EACH SIDE

(1) WHELEN MICRO PIONEER MP8 TIP AND TRACKING LIGHT EACH SIDE

140.00 (11'-8") APPROX O.A.H.

8.00" NFPA MIN.

(2) ZIAMATIC SAC-44-E FOLDING WHEEL CHOCKS

8.00" NFPA MIN.

(2) WHELEN L31HRFN L.E.D. WARNING LIGHTS

(2) WHELEN MPR15 RECESSED SCENE LIGHTS

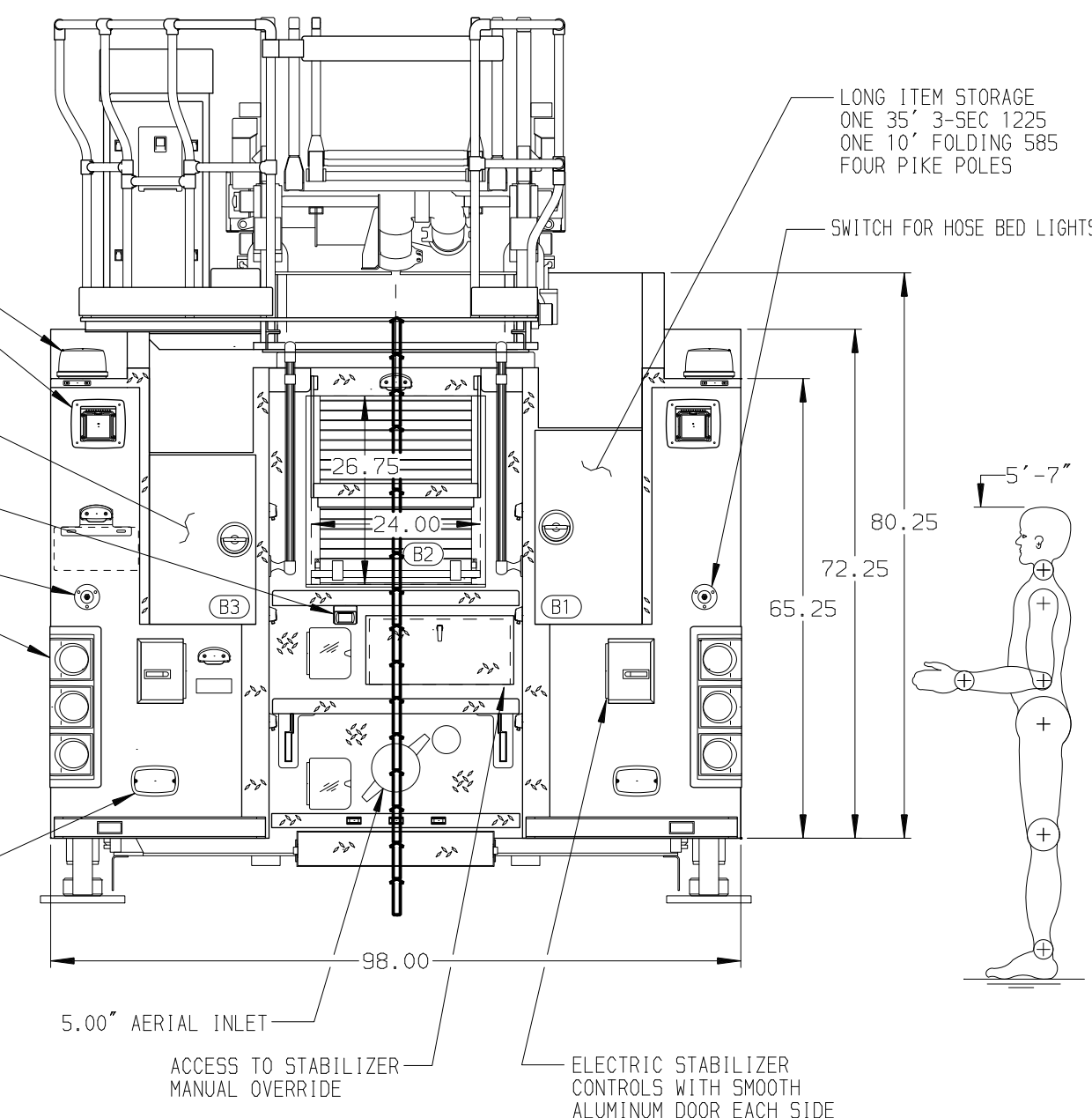
LONG ITEM STORAGE ONE 24\"/>

PIERCE BACK UP CAMERA

SWITCH FOR REAR SCENE LIGHTS

(2) WRAP AROUND L.E.D. LIGHT SETS WITH STOP/TAIL, BACK UP AND DIRECTIONAL LIGHTS IN A COMMON BEZEL

(2) WHELEN M6 L.E.D. WARNING LIGHTS



LONG ITEM STORAGE ONE 35\"/>

SWITCH FOR HOSE BED LIGHTS

80.25

72.25

65.25

5.00\"/>

5.00\"/>

ELECTRIC STABILIZER CONTROLS WITH SMOOTH ALUMINUM DOOR EACH SIDE

CHASSIS	CAB	AXLE, FRONT, CUSTOM	TRANSMISSION	PUMPHOUSE	CROSSLAYS, 1.50"	SPEEDLAYS	CUSTOMER APPROVAL	Pierce MANUFACTURING INC.		JOB NO.			
Enforcer Chassis ENGINE 400 HP Cummins L9 Engine	7000 Enforcer Cab BUMPER 19" Extended Stainless Steel	19,500 Lb TAK-4 Axle AXLE, REAR 33,500 Lb Meritor Axle	Allison 5th Gen, 3000 EVS P	45" Control Zone Side Mount PUMP 1500 GPM Waterous CSU	(2) 1.50" Standard Capacity CROSSLAYS, 2.50"	Speedlays Not Required GENERATOR Generator Not Required	APPROVED BY: _____ DATE: _____			35485			
NOTE DIMENSIONS SHOWN ARE APPROXIMATE AND ARE SUBJECT TO MINOR DEVIATIONS AS MAY OCCUR OR BE NECESSARY IN CONSTRUCTION. MINOR DETAILS NOT SHOWN.	1. ONE 1.50 OUTLET WITH 2.00 PIPING AND SWIVEL LOCATED IN CENTER BUMPER TRAY 2. SHORELINE RECEPTACLE WITH KUSSMAUL SUPER AUTO-EJECT LOCATED ON DRIVER SIDE OF THE CAB 3. AIR INLET WITH DISCONNECT COUPLING IN THE DRIVER SIDE STEPPWELL 4. BATTERY CHARGER LOCATED BEHIND DRIVER SEAT 5. BATTERY CHARGE INDICATOR LOCATED ON DRIVER SIDE OF THE CAB 6. DUAL L.E.D. LIGHT STRIPS LOCATED IN HOSE BED 7. FOUR ADJUSTABLE SHELVES IN COMPARTMENTS PER SHOP ORDER 8. 7.00\"/>	10. 1500 GPM HIGH FLOW WATERWAY 11. LIFTING EYE RESCUE ATTACHMENT AT AERIAL TIP					CHASSIS DATA	TITLE	75 AERIAL LADDER & BODY ASSEMBLY (HAL)	SCALE	1:24	DATE	
							MAKE	FOR	PIERCE FIELD UNIT APPLETON, WI	CHECKED BY	THS	23JUL20	
							MODEL	DWG NO.	35485AD	SHEET SIZE	D	SHEET NO.	1 OF 1
							REV	DATE	29SEP20	BY	TKA	CH	