

Pumper, PUC

BODY

Pumper, PUC, Aluminum

CHASSIS

Enforcer Chassis, PUC

CHASSIS

AXLE, FRONT, CUSTOM

23,000 Lb Dana Axle

AXLE, REAR

31,000 Lb Meritor Axle

ENGINE

450 HP Cummins L9 Engine

TRANSMISSION

Allison 5th Gen, 3000 EVS P

BUMPER

19" Extended Stainless Steel

CAB

7010 Enforcer Cab, PUC

BODY

WATER TANK

1000 Gallon Poly Water Tank

COMPT, PUMPER, REAR

33.50" FF RollUp Rear Compt w/Tailboard, PUC

COMPT, PUMPER, LEFT SIDE

189" Lap/RollUp Full Height & Depth Front & Rear, PUC

COMPT, PUMPER, RIGHT SIDE

189" Lap Full Height & Depth Front & Rear, PUC

FIRE SUPPRESSION

PUMPHOUSE

Control Zone, PUC

PUMP

1500 GPM Pierce PUC

CROSSLAYS, 1.50"

(2) 1.50", Poly Trays, 200"

(1) Deadlay, Poly Tray

CROSSLAYS, 2.50"

(1) 2.50", Poly Tray, 200"

GENERATOR

Generator Not Required

Foam System

Husky 3 Single Agent Foam System

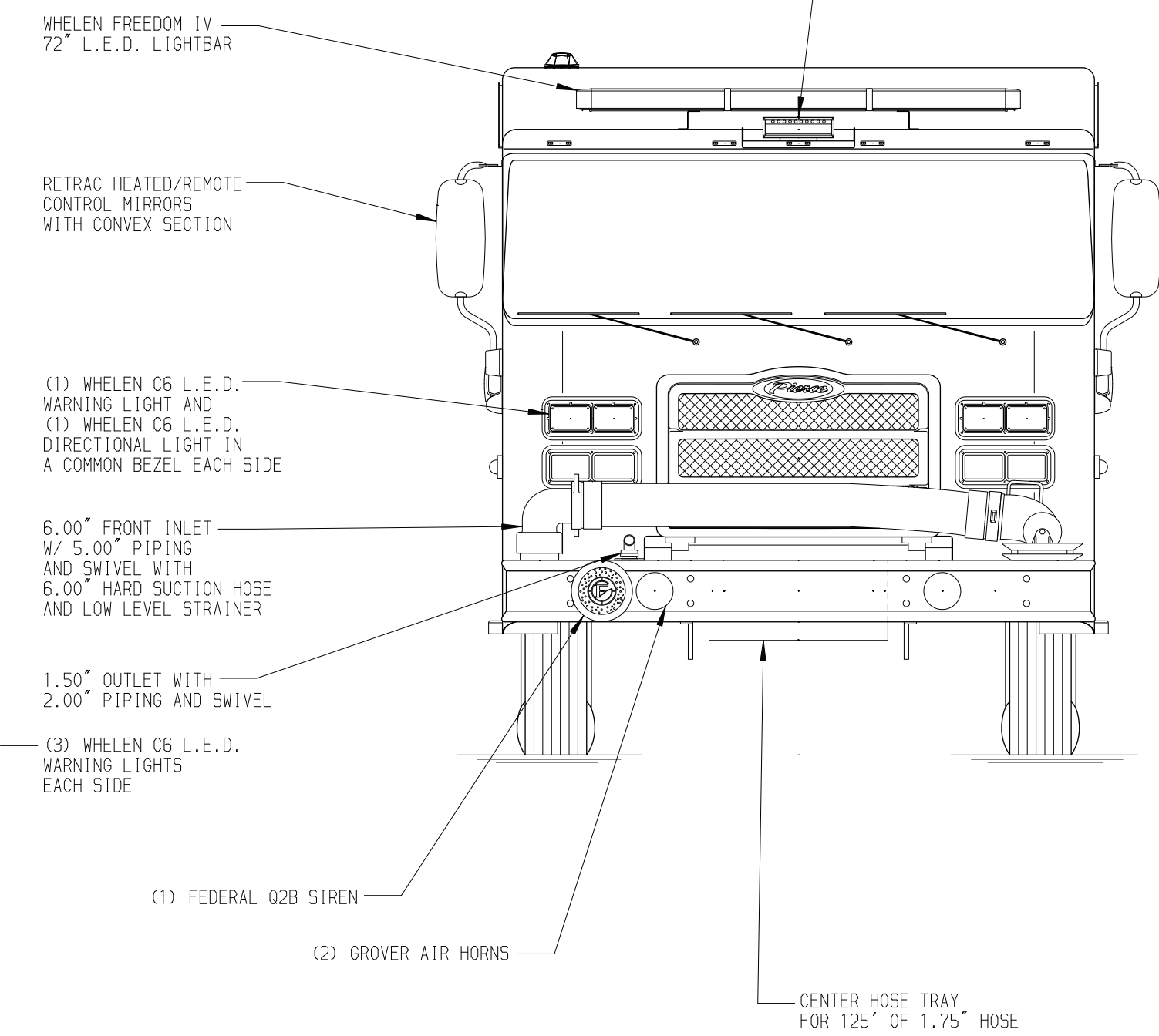
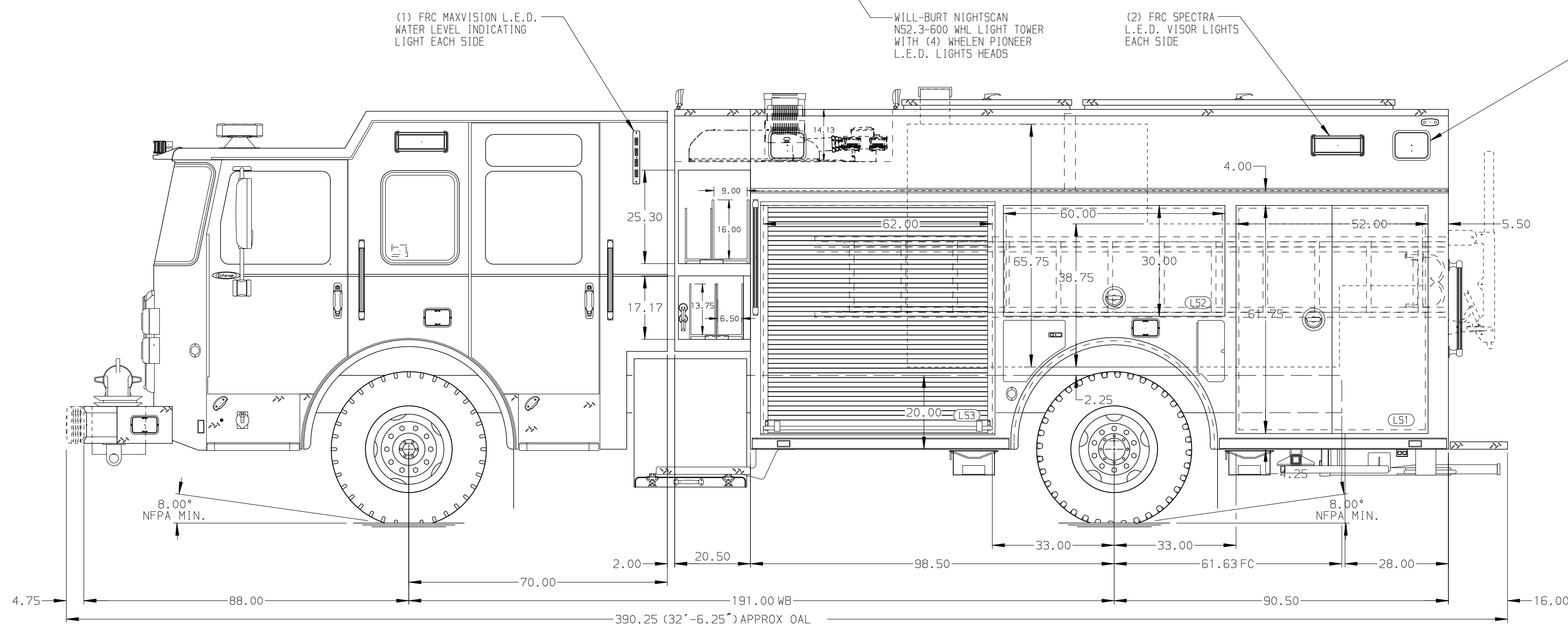
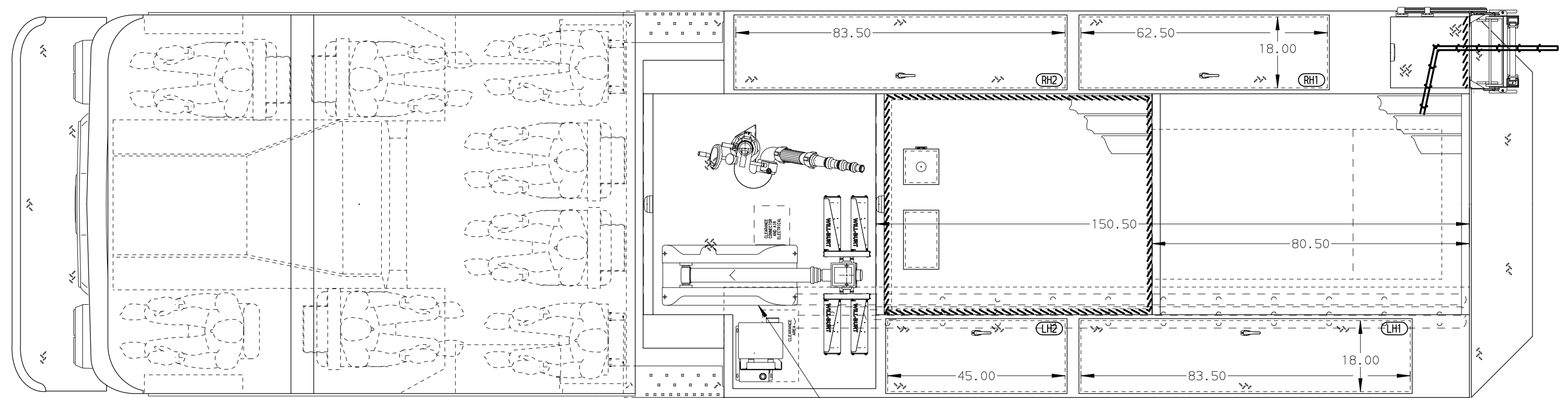
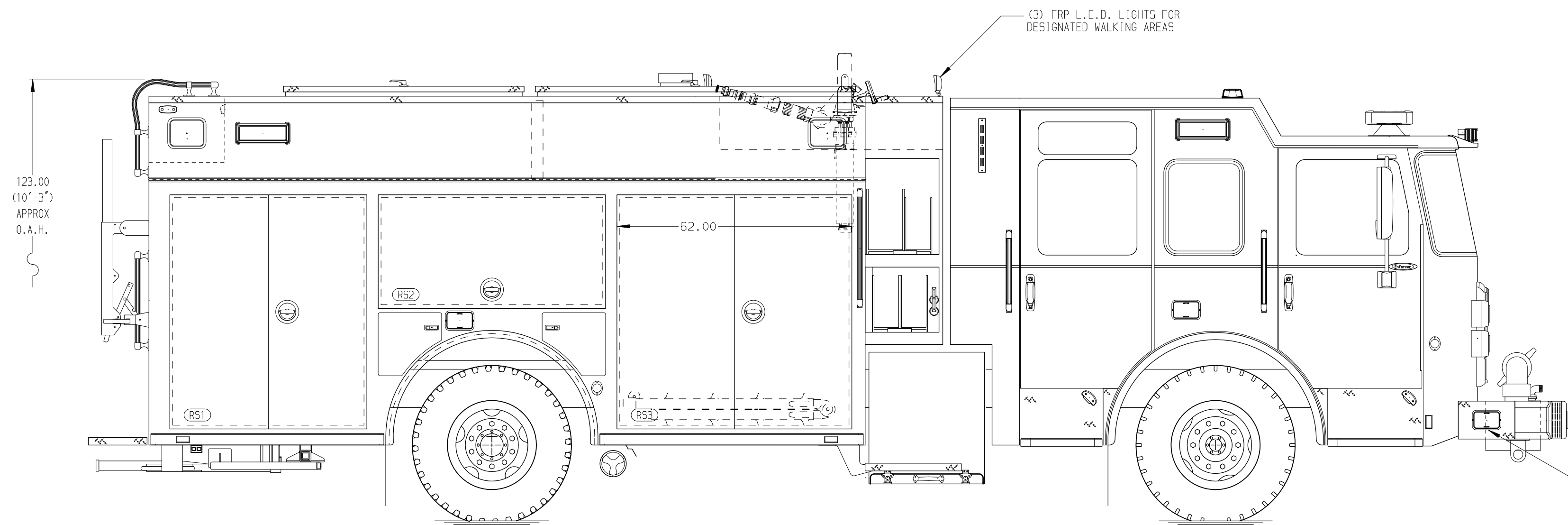
Foam Cell

25 Gallon Foam Cell, Not Reduced Water, PUC

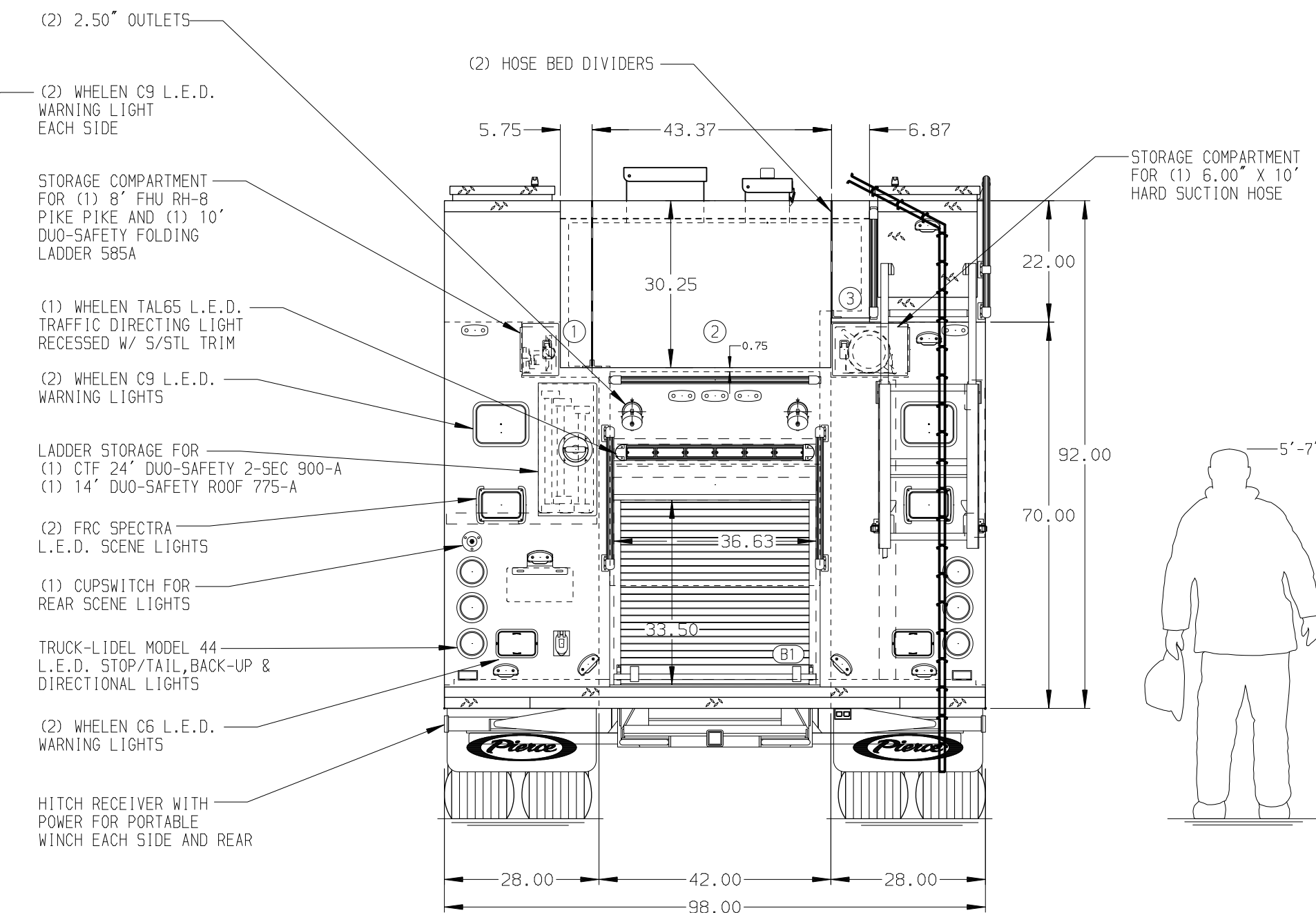
NOTE
DIMENSIONS SHOWN ARE APPROXIMATE AND ARE SUBJECT TO MINOR DEVIATIONS AS MAY OCCUR OR BE NECESSARY IN CONSTRUCTION. MINOR DETAILS NOT SHOWN.

- SHORELINE RECEPTACLE LOCATED IN DRIVER SIDE STEP WELL
- AIR INLET WITH DISCONNECT COUPLING IN THE DRIVER SIDE STEPWELL
- BATTERY CHARGER LOCATED BEHIND DRIVER'S SEAT
- BATTERY CHARGE INDICATOR DISPLAYED THROUGH DRIVER SIDE WINDOW
- TWO ADJUSTABLE SHELVES LOCATED PER SHOP ORDER
- FOUR FLOOR MOUNTED SLIDE-OUT TRAYS LOCATED PER SHOP ORDER
- TWO 500LB ADJUSTABLE SLIDE-OUT TRAYS LOCATED PER SHOP ORDER
- ONE 250LB ADJUSTABLE SLIDE-OUT TRAY LOCATED PER SHOP ORDER
- THREE TILTING/SLIDE-OUT TRAY LOCATED PER SHOP ORDER
- LITTLE GIANT LADDER STORAGE LOCATED IN COMPARTMENT R53

- ONE SWING-OUT GEAR GRID SYSTEM LOCATED PER SHOP ORDER
- PARTITIONS BETWEEN COMPARTMENTS L51/B1 & R51/B1
- ALUMINUM TOOLBOARD MOUNTED TO BACK COMPARTMENT WALL PER SHOP ORDER
- AIR BAG RACK LOCATED PER SHOP ORDER
- VANNER BRAVO POWER INVERTER LOCATED PER SHOP ORDER
- FOUR 120V DUPLEX RECEPTACLES LOCATED PER SHOP ORDER



HOSEBED CAPACITY	
BED 1	250' OF 2.50" D.J. POLY HOSE
BED 2	1000' OF 5.00" D.J. POLY HOSE
BED 3	175' OF 2.50" D.J. POLY HOSE



		JOB NO.	35481
		SCALE	DATE
Pierce MANUFACTURING INC.		TITLE	Pierce PUC Pumper Approval Drawing
		MAKE	FOR
PIERCE		FOR	Fox Lake Fire Department
		CHECKED BY	MMF
ENFORCER		DWG NO.	35481AD
		SHEET SIZE	SHEET NO.
		D	1 OF 1