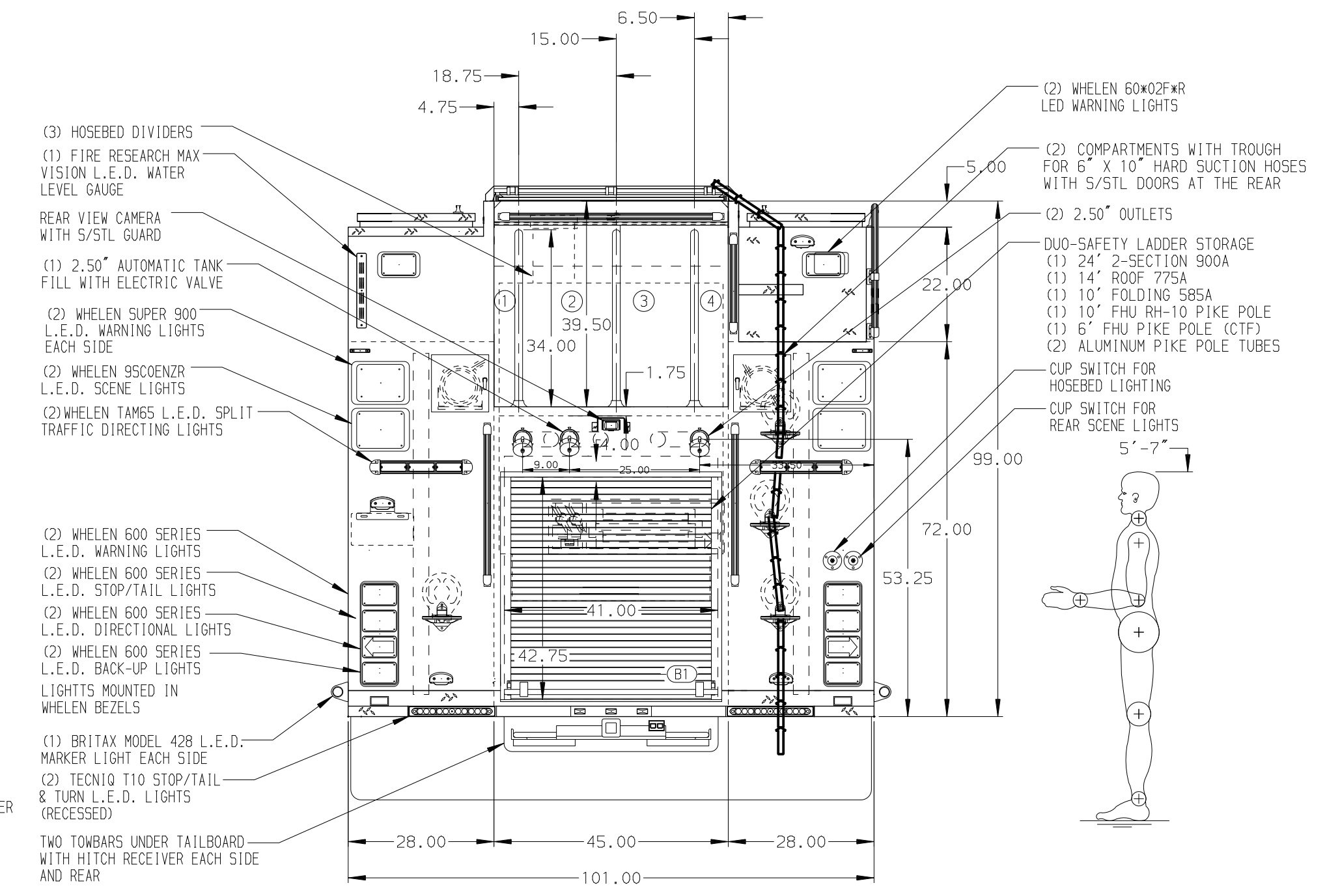
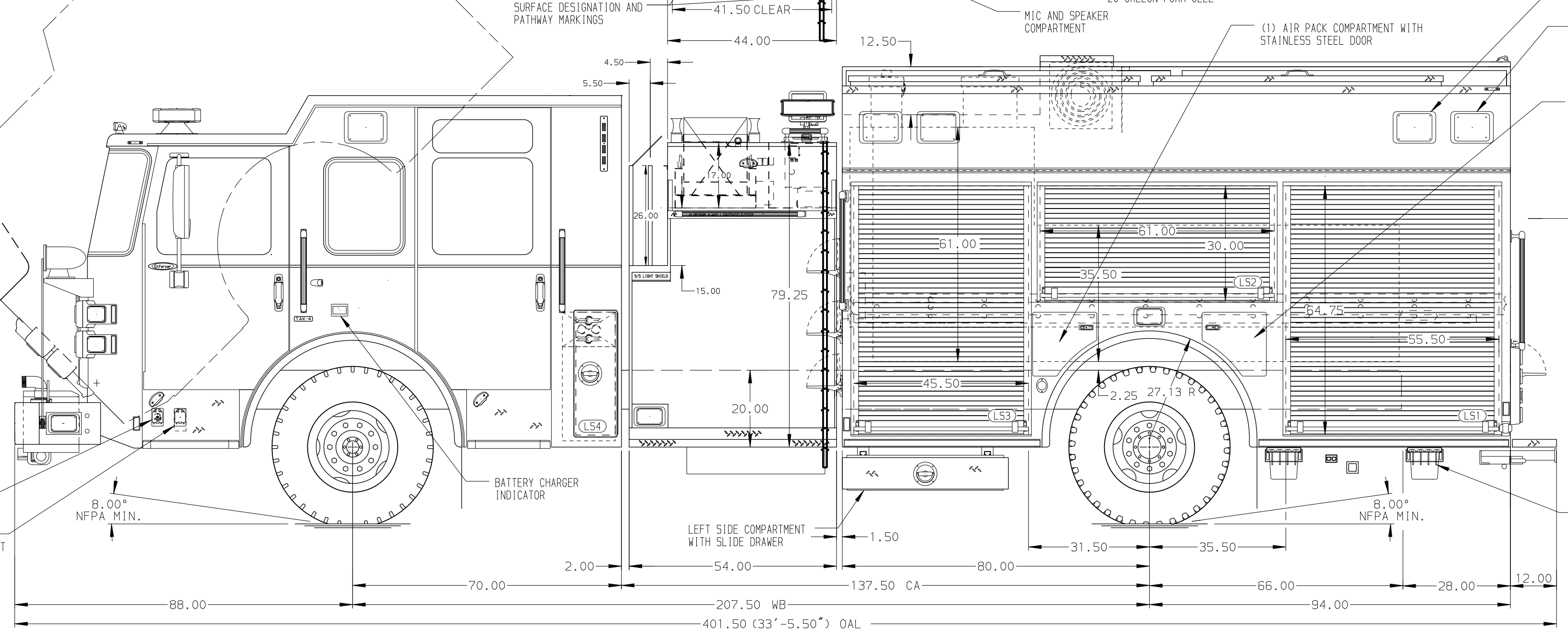


- HOSEBED CAPACITIES**
- ① 400' OF 1.75" HOSE
 - ② 700' OF 5.00" SUPPLY HOSE
 - ③ 400' OF 3.00" HOSE
 - ④ 200' OF 2.50" HOSE



ALUMINUM BODY MAXIMUM O.A.L. 401.50"

NOTE
DIMENSIONS SHOWN ARE APPROXIMATE AND ARE SUBJECT TO MINOR DEVIATIONS AS MAY OCCUR OR BE NECESSARY IN CONSTRUCTION. MINOR DETAILS NOT SHOWN.

- 1. ONSPOT AUTOMATIC TIRE CHAINS TO BE PROVIDED AT REAR
- 2. BATTERY CHARGER LOCATED BEHIND DRIVER'S SEAT
- 3. DUAL L.E.D. LIGHT STRIPS LOCATED IN HOSE BED
- 4. ONE HANNAY ELECTRIC REWIND CORD REEL MODEL 1618-17-18 LOCATED RH2 WITH 200' OF 10/3 CABLE
- 5. ONE 120V 7-PLACE RECEPTACLE STRIP MOUNTED IN CAB PER SHOP ORDER
- 6. ONE 120V 7-PLACE RECEPTACLE STRIP MOUNTED IN COMPARTMENT PER SHOP ORDER
- 7. OIL DRY HOPPER WITH 150 LBS. OF OIL DRY ABSORBENT IN HATCH COMPARTMENT-RH1

REV	DATE	BY	CH	ENFORCER
22FEB21	LME	AZA		MAKE
14JAN21	LME	NPE		PIERCE
13JAN21	LME	NPE		MODEL

		JOB NO.	35478		
		SCALE	DATE		
TITLE	1500-D-750P, 730G WATER W/20G FOAM, 174" HDRP LADDERS THRU THE TANK, (2) CROSSLAYS, BOOSTER REEL		DRAWN BY	LME	04SEP20
FOR	DENNIS TOWNSHIP FIRE DISTRICT # 1 SOUTH SEAVILLE, NEW JERSEY		CHECKED BY	NPE	16SEP20
DWG NO.	35478AD-SH1		SHEET SIZE	SHEET NO.	
			D	1 OF 2	