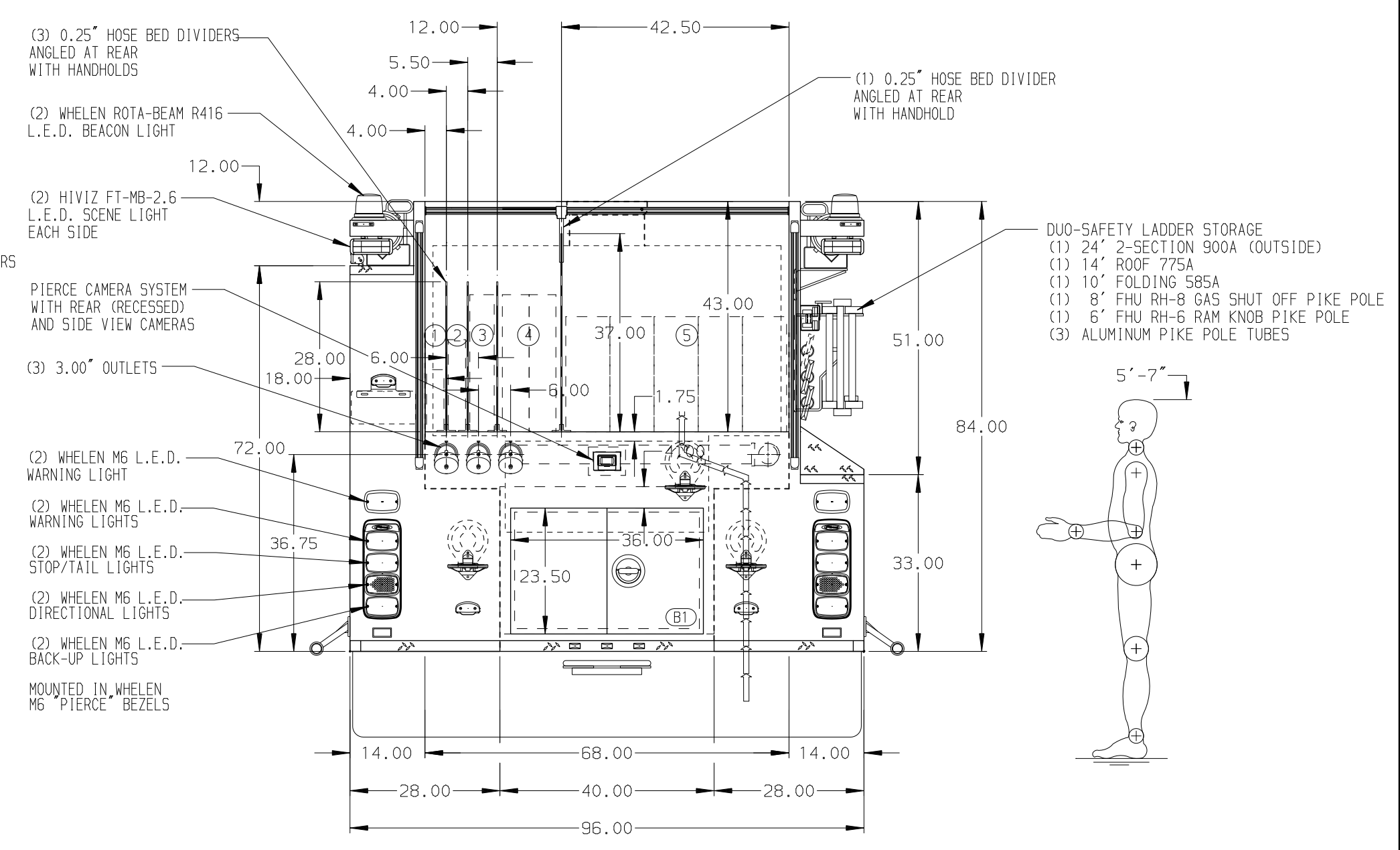
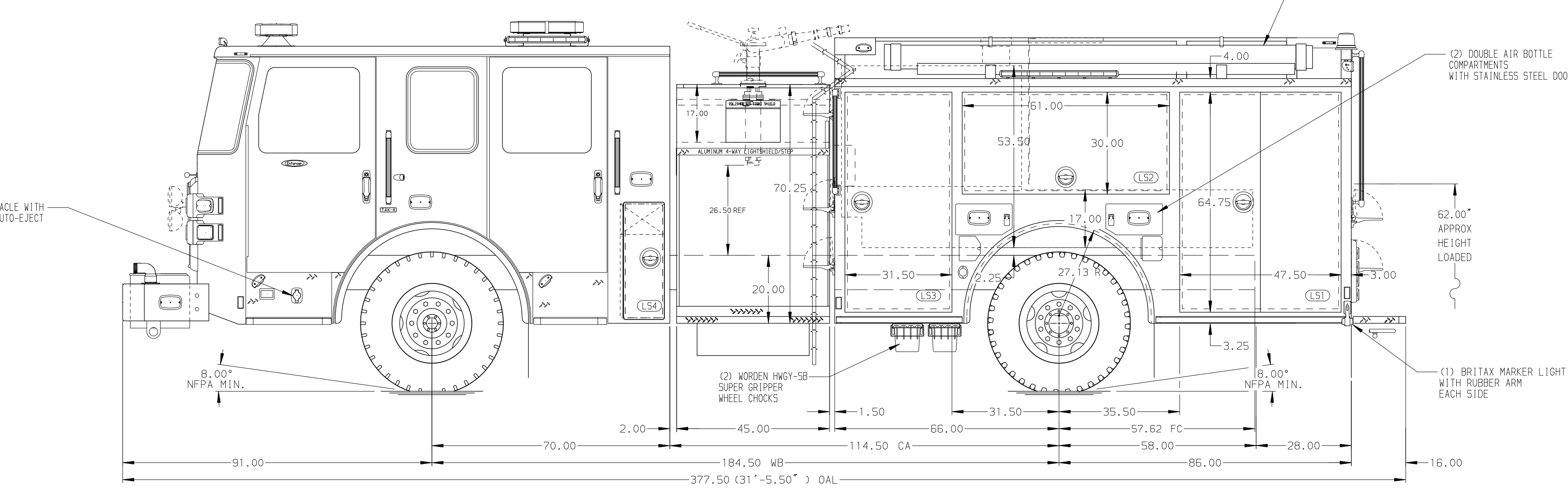


- HOSEBED CAPACITIES**
- ① 200' OF 1.75\"/>



ALUMINUM BODY

MAX OAH = 111"

SIDE ROLL AND FRONTAL IMPACT PROTECTION

NOTE
DIMENSIONS SHOWN ARE APPROXIMATE AND ARE SUBJECT TO MINOR DEVIATIONS AS MAY OCCUR OR BE NECESSARY IN CONSTRUCTION. MINOR DETAILS NOT SHOWN.

- 1. BATTERY CHARGER LOCATED BEHIND DRIVER'S SEAT
- 2. BATTERY CHARGER INDICATOR LOCATED AT DRIVER'S SIDE STEP AREA
- 3. BRUSHED STAINLESS STEEL SCUFFPLATE INSIDE EACH BODY COMPARTMENT DOORS
- 4. 120V DUPLEX RECEPTACLE LOCATED IN COMPARTMENTS RS1 AND RS2

22APR21	SAM	DTS	CHASSIS DATA
04MAR21	SAM	DTS	MAKE
01FEB21	SAM	DTS	PIERCE
05JAN21	SAM	DTS	MODEL
03DEC20	SAM	DTS	ENFORCER
REV	DATE	BY	CH

	JOB NO.	35476
	SCALE	DATE
TITLE	1500-D-750 GAL POLY, 152" FH FDLER LS, LOW FDLER RS LADDER BRACKETS, GENERATOR, DELUGE, BOOSTER REEL	DRAWN BY
FOR	UPPER DUBLIN TOWNSHIP FORT WASHINGTON, PENNSYLVANIA	CHECKED BY
DWG NO.	35476AD	SHEET SIZE
		SHEET NO.
		1 OF 1