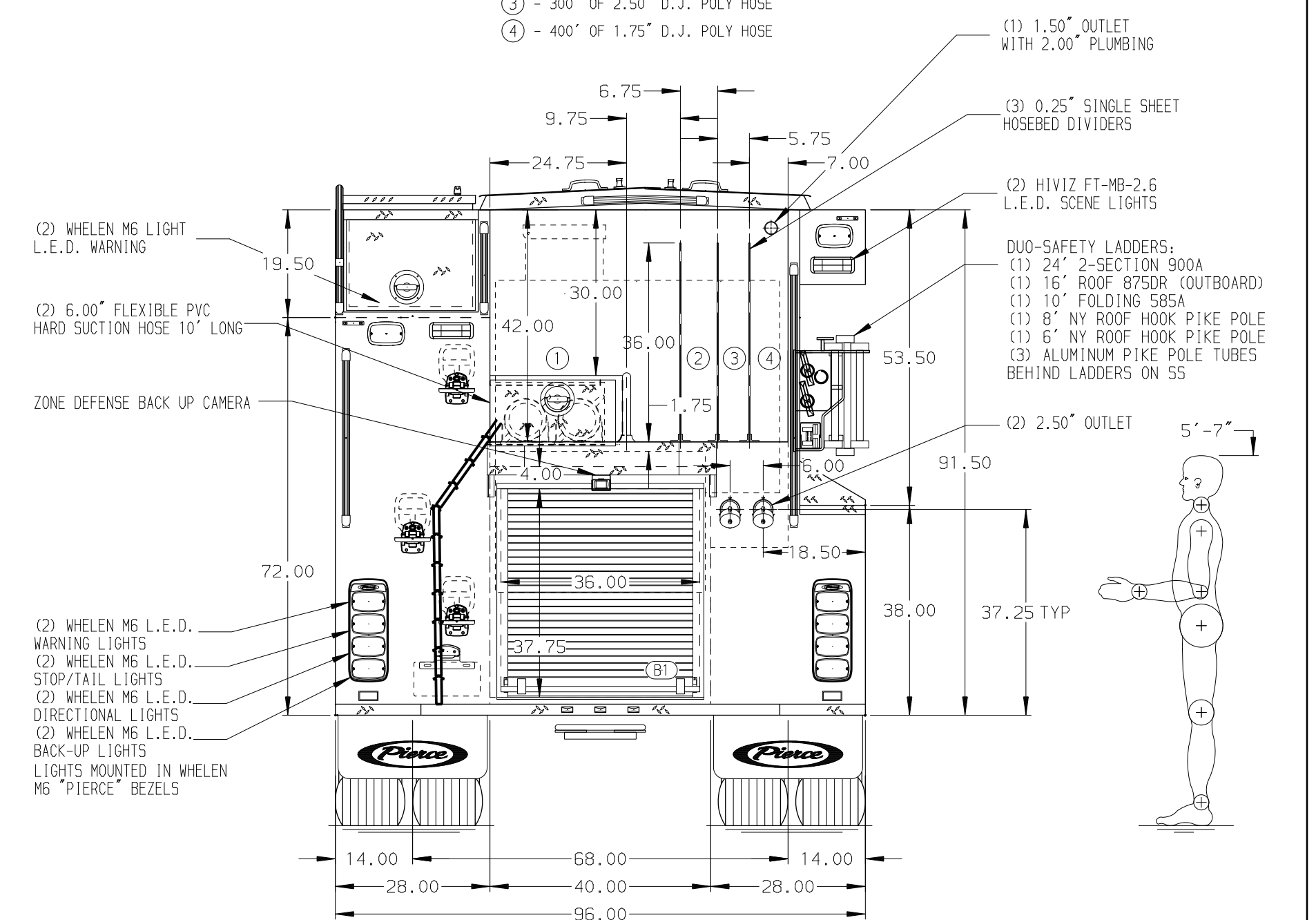
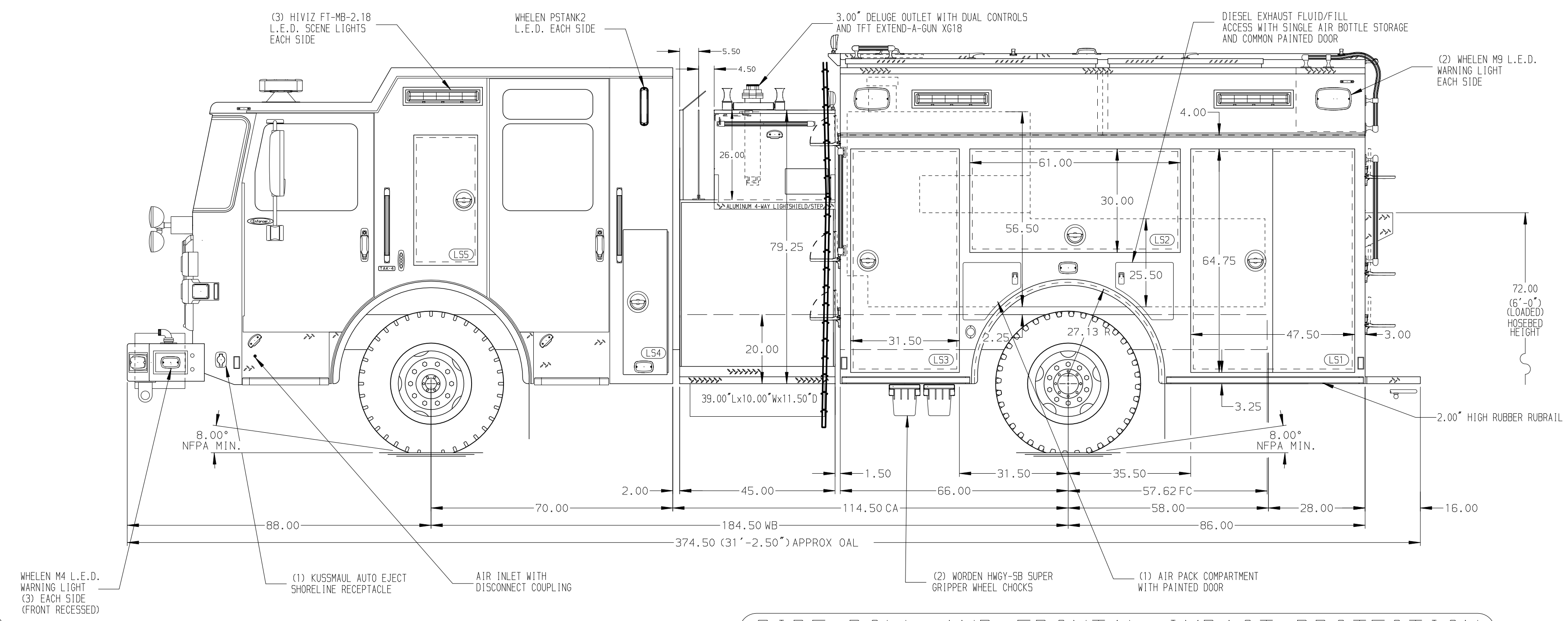


- HOSEBED CAPACITIES
- ① - 1200' OF 5.00\"/>



ALUMINUM BODY

SIDE ROLL AND FRONTAL IMPACT PROTECTION

NOTE
DIMENSIONS SHOWN ARE APPROXIMATE AND ARE SUBJECT TO MINOR DEVIATIONS AS MAY OCCUR OR BE NECESSARY IN CONSTRUCTION. MINOR DETAILS NOT SHOWN.

- 1. AIR OUTLET WITH SHUT-OFF VALVE LOCATED DS PUMP PANEL
- 2. BATTERY CHARGER/COMPRESSOR LOCATED BEHIND DS SEAT
- 3. REVERSED HINGED DOOR ON COMPARTMENT LS3
- 4. BRUSHED STAINLESS STEEL SCUFFPLATE INSIDE EACH BODY COMPARTMENT DOORS
- 5. 120V DUPLEX RECEPTACLE LOCATED IN EACH BODY COMPARTMENT

REV	DATE	BY	CH	ENFORCER
07APR21	JJB	DTS		CHASSIS DATA
02MAR21	JJB	DTS		MAKE
18JAN21	JJB	DTS		PIERCE
16OCT20	CDU	CDU		MODEL

		JOB NO.	35465
		SCALE	DATE
TITLE	1500-D-750 GAL. WATER, 152\"/>		
FOR	UPPER PROVIDENCE TOWNSHIP OAKS, PENNSYLVANIA		
DWG NO.	35465AD		
	DRAWN BY	JJB	09OCT20
	CHECKED BY	CDU	13OCT20
	SHEET SIZE	D	SHEET NO.
			1 OF 1