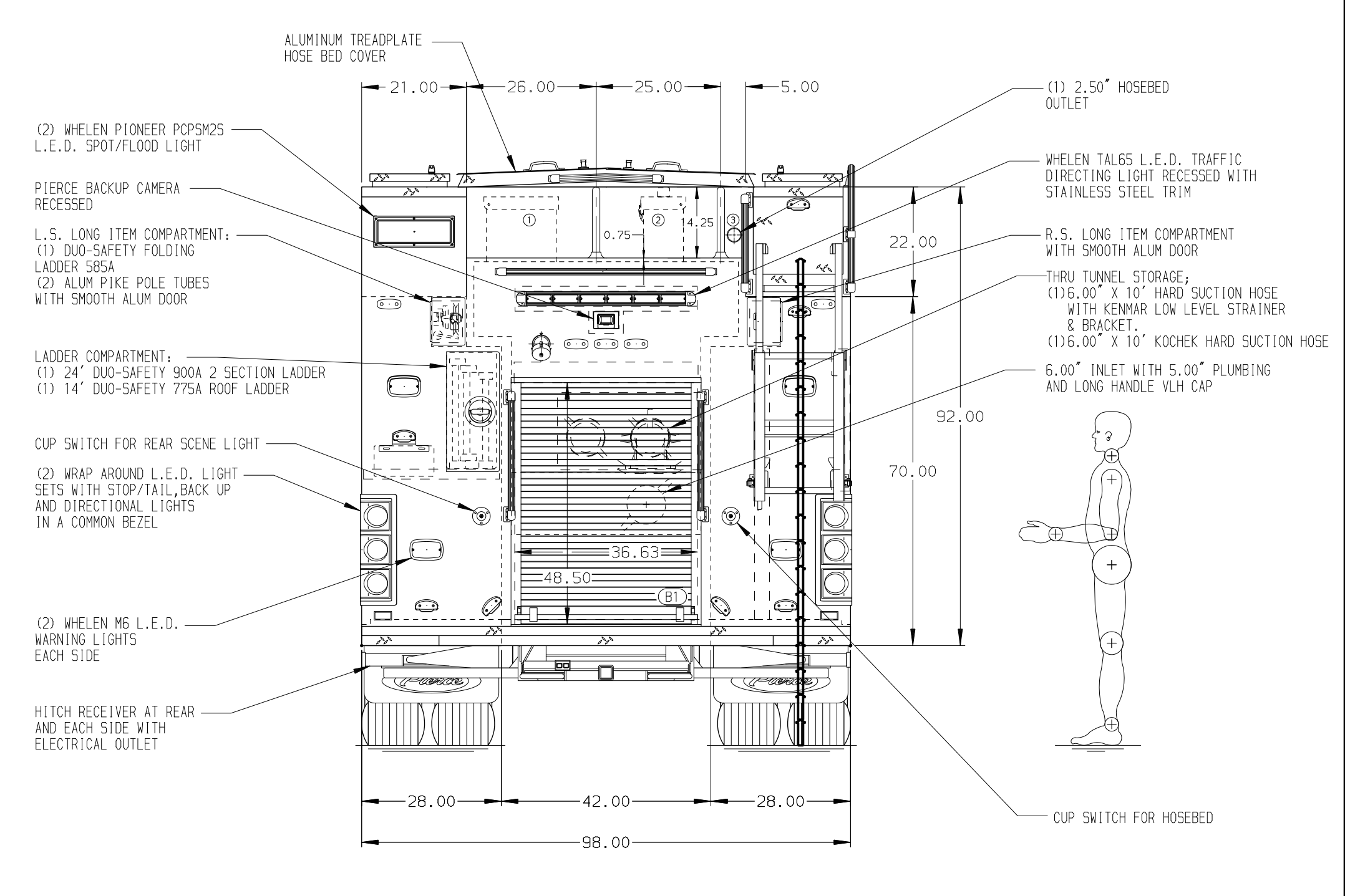
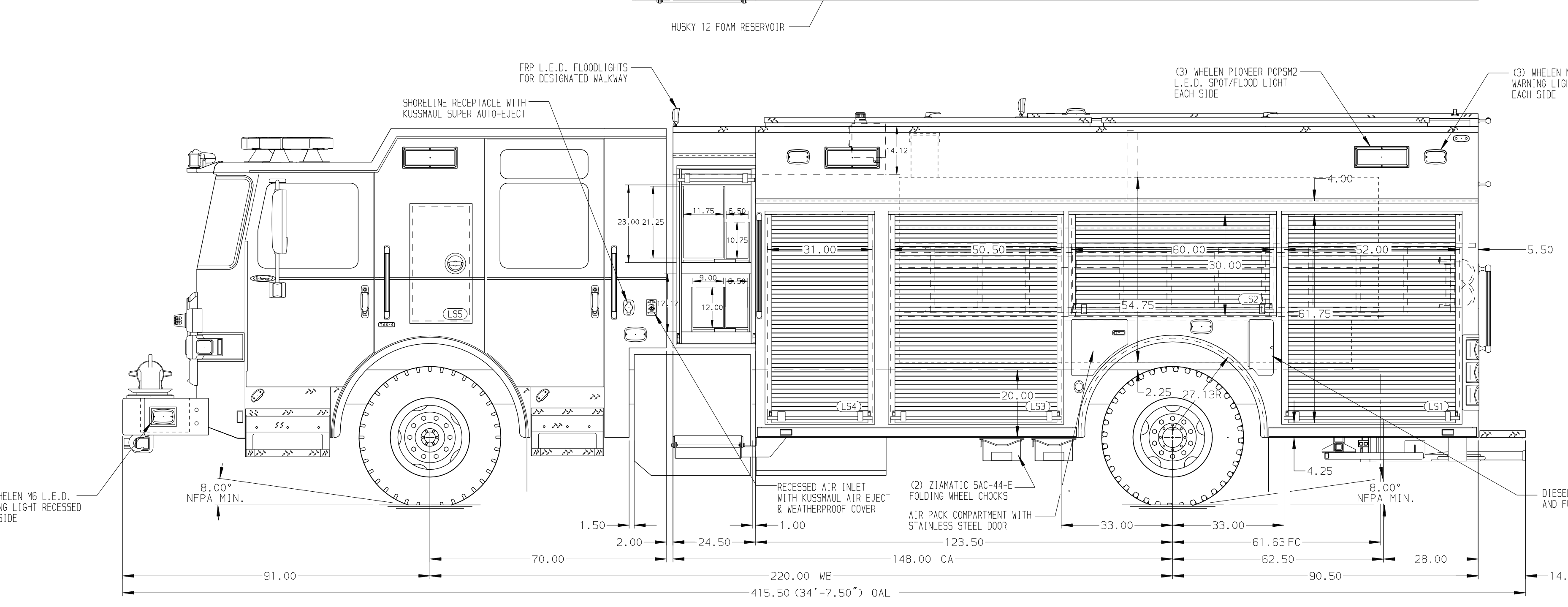


- HOSEBED CAPACITIES**
- ① 500' OF 5.00\"/>



ALUMINUM BODY

SIDE ROLL AND FRONTAL IMPACT PROTECTION

**NOTE**  
DIMENSIONS SHOWN ARE APPROXIMATE AND ARE SUBJECT TO MINOR DEVIATIONS AS MAY OCCUR OR BE NECESSARY IN CONSTRUCTION. MINOR DETAILS NOT SHOWN.

- 1. AIR OUTLET WITH SHUT-OFF VALVE LOCATED ON DRIVER'S SIDE PUMP PANEL
- 2. BATTERY CHARGER LOCATED IN COMPARTMENT L54
- 3. BATTERY CHARGER INDICATOR LOCATED ON DRIVER'S SEAT RISER
- 4. DUAL L.E.D. LIGHT STRIPS LOCATED IN HOSE BED
- 5. ONE FULL WIDTH/DEPTH ADJUSTABLE SHELF IN COMPARTMENT, L53, TWO IN COMPARTMENT, L51
- 6. ONE FLOOR MOUNTED SLIDE-OUT TRAY IN COMPARTMENT (S), RS1 & B1
- 7. TWO SLIDE-OUT TOOL BOARD WITH PEGBOARD PATTERN IN COMPARTMENT (S), RS4
- 8. ONE SWING-OUT ALUMINUM TOOL BOARD IN COMPARTMENT (S), L52 & RS2
- 9. ONE POLY TOOL BOX IN COMPARTMENT (S), RS3
- 10. CTECH DRAWER ASSEMBLY IN COMPARTMENT (S), L53
- 11. PARTITION BETWEEN COMPARTMENTS L51/B1 AND RS1/B1
- 12. VERTICAL PARTITION COMPARTMENT (S), RS3
- 13. ALUMINUM PEGBOARD ON BACK WALL COMPARTMENT (S), L52 & L53
- 14. HOSE STORAGE RACK WITH ADJUSTABLE DIVIDERS FOR ROLLED HOSE IN COMPARTMENT (S), L51
- 15. STORAGE BIN FOR (4) FIRE EXTINGUISHERS LOCATED, RS4

REV	DATE	BY	CH	ENFORCER
22JAN21	JRC	PJP		CHASSIS DATA
10DEC20	JRC	PJP		MAKE PIERCE
01OCT20	JRC	NPE		MODEL

		JOB NO.	35441
		SCALE	1:24
<b>TITLE</b> 1500-D-1000, 975G WATER/ 25G FOAM, 214" RESCUE PUC LADDERS THRU BODY, HARD SUCTION HOSE THRU TANK.		DRAWN BY	JRC
		CHECKED BY	NPE
<b>FOR</b> EDEN FIRE DEPARTMENT EDEN, WISCONSIN		DWG NO.	35441AD
		SHEET NO.	1 OF 1