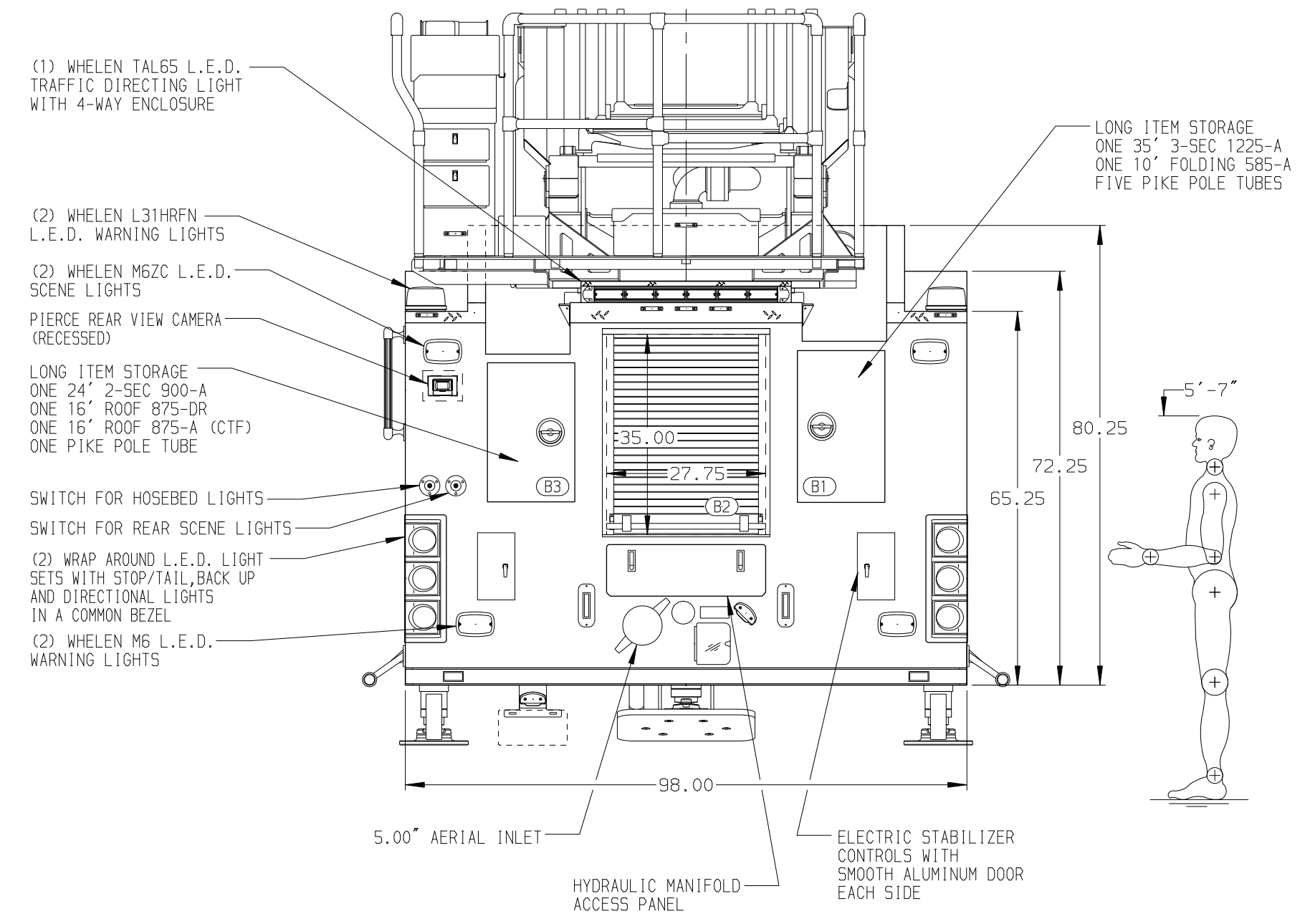
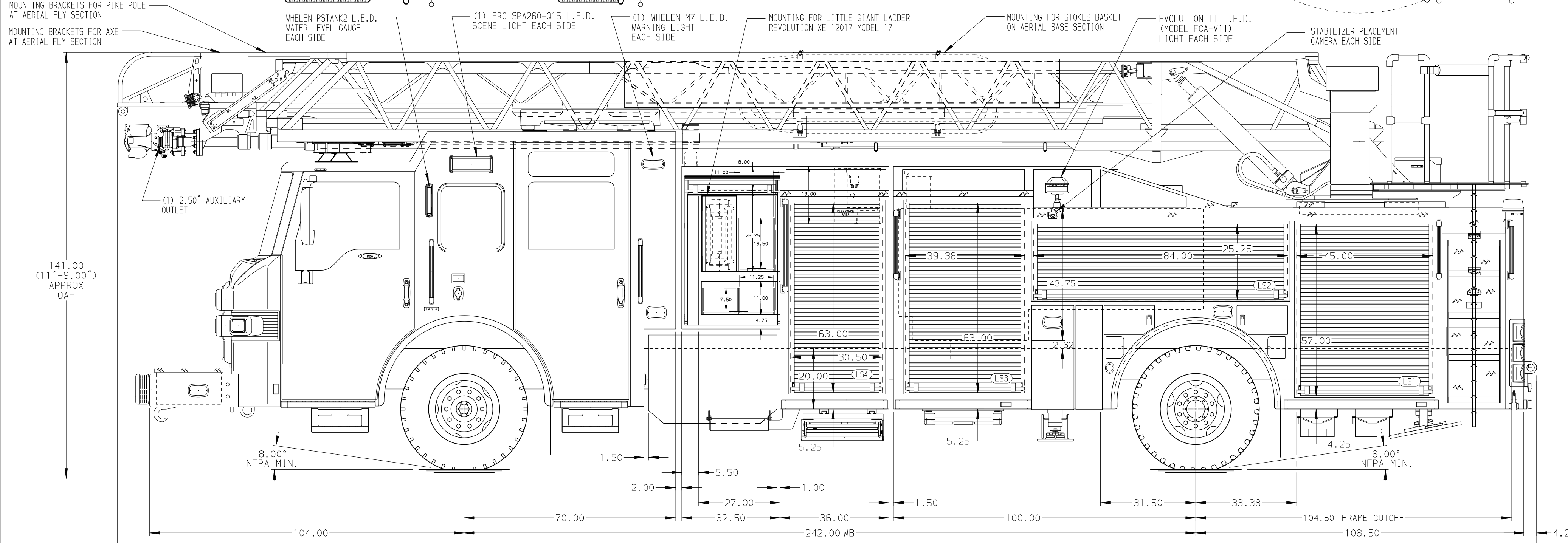
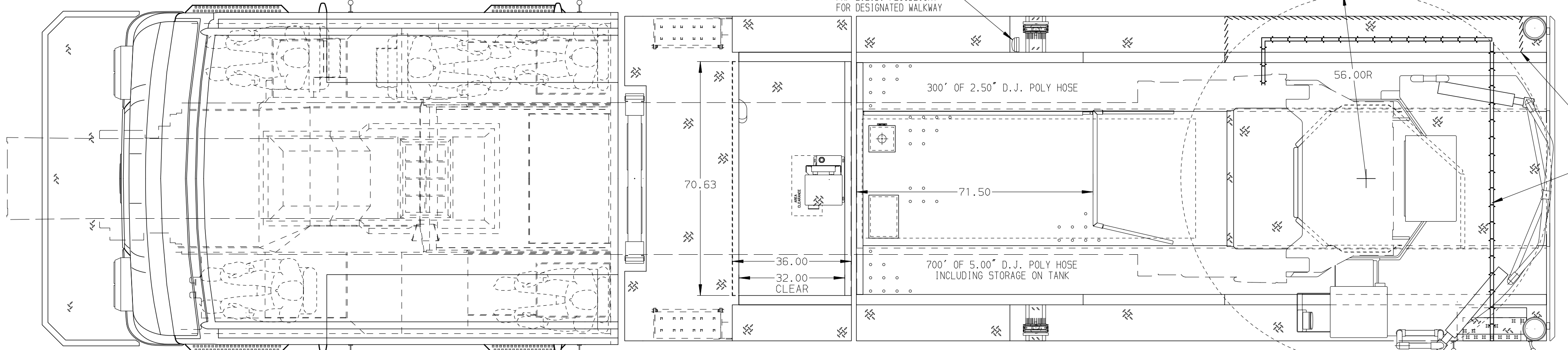


<b>BODY</b> 107' ASL Aluminum Body PUC <b>COMPT, LEFT SIDE FRONT</b> Full Height RollUp Forward <b>COMPT, LEFT SIDE REAR</b> Full Height RollUp Rearward <b>COMPT, RIGHT SIDE FRONT</b> Full Height RollUp Forward <b>COMPT, RIGHT SIDE REAR</b> Full Height RollUp Rearward	<b>WATER TANK</b> 480 Gallon Poly Water Tank <b>Foam System</b> Husky 3 Single Agent Foam System <b>Foam Cell</b> 20 Gallon Foam Cell, Reduced Water, PUC
---	--



<b>CHASSIS</b> Impel Chassis, PUC 450 HP Cummins L9 Engine	<b>CAB</b> 7010 Notched Impel FR Cab, PUC 26\" Extended Painted Steel	<b>AXLE, FRONT, CUSTOM</b> 24,000 Lb TAK-4 Axle <b>AXLE, REAR</b> 33,500 Lb Meritor Axle	<b>TRANSMISSION</b> Allison 5th Gen, 3000 EV5 P	<b>PUMPHOUSE</b> Control Zone, PAL/PAP PUC <b>PUMP</b> 1500 GPM Pierce PUC	<b>CROSSLAYS, 1.50\"</b> (2) 1.50\", Poly Trays, 200' <b>CROSSLAYS, 2.50\"</b> (1) 2.50\", Poly Tray, 200'	<b>SPEEDLAYS</b> Speedlays Not Required <b>GENERATOR</b> Generator Not Required	<b>SAFETY</b> Side Roll and Frontal Impact Protection
--	---	---	--	---	---	--	---

**NOTE**  
DIMENSIONS SHOWN ARE APPROXIMATE AND ARE SUBJECT TO MINOR DEVIATIONS AS MAY OCCUR OR BE NECESSARY IN CONSTRUCTION. MINOR DETAILS NOT SHOWN.

- ONE 1.50 OUTLET WITH 2.00 PIPING AND SWIVEL LOCATED IN CENTER BUMPER TRAY PER SHOP ORDER
- 20A SHORELINE RECEPTACLE WITH KUSMAUL SUPER AUTO-EJECT LOCATED ON THE DRIVER SIDE OF THE CAB
- AIR INLET WITH DISCONNECT COUPLING IN THE DRIVER SIDE STEPWELL
- BATTERY CHARGER LOCATED IN COMPARTMENT PER SHOP ORDER
- BATTERY CHARGE INDICATOR LOCATED ON THE DRIVER SIDE OF THE CAB
- ELEVEN ELASTIC PULL STRAPS FOR ROLL-UP DOORS PER SHOP ORDER
- DUAL L.E.D. LIGHT STRIPS LOCATED IN HOSE BED
- SIX ADJUSTABLE SHELVES IN COMPARTMENTS PER SHOP ORDER
- FIVE FLOOR MOUNTED SLIDE-OUT TRAYS IN COMPARTMENTS PER SHOP ORDER
- TWO ADJUSTABLE TOOLBOARDS MOUNTED TO SLIDE-OUT TRAY IN COMPARTMENTS PER SHOP ORDER
- TWO L-SHAPED SLIDE-OUT TOOL BOARDS WITH PEGBOARD PATTERN IN COMPARTMENTS PER SHOP ORDER
- THREE 1.00\" RETAINING LIP IN COMPARTMENT PER SHOP ORDER
- ONE CTECH DRAWER ASSEMBLY IN COMPARTMENT PER SHOP ORDER
- TWO 120V 4-PLACE DUPLEX RECEPTACLES LOCATED IN CAB PER SHOP ORDER
- TWO 120V DUPLEX RECEPTACLES LOCATED IN COMPARTMENTS PER SHOP ORDER
- TWO 120V 6-PLACE RECEPTACLE STRIPS LOCATED IN COMPARTMENTS PER SHOP ORDER
- NON-RAISED AERIAL PEDESTAL
- LIFTING EYE ROPE RESCUE ATTACHMENT AT AERIAL TIP
- 1500 GPM HIGH FLOW WATERWAY
- LIMITED RETRACTION NOT REQUIRED

				JOB NO.	35439
				SCALE	DATE
TITLE 107' ASCENDANT AERIAL LADDER AND BODY ASSEMBLY				DRAWN BY	TKA
FOR WEST COUNTY EMS & FIRE PROTECTION DISTRICT MANCHESTER, MISSOURI				CHECKED BY	CRI
DWG NO. 35439AD				SHEET SIZE	SHEET NO.
REV DATE BY CH IMPEL				D	1 OF 1