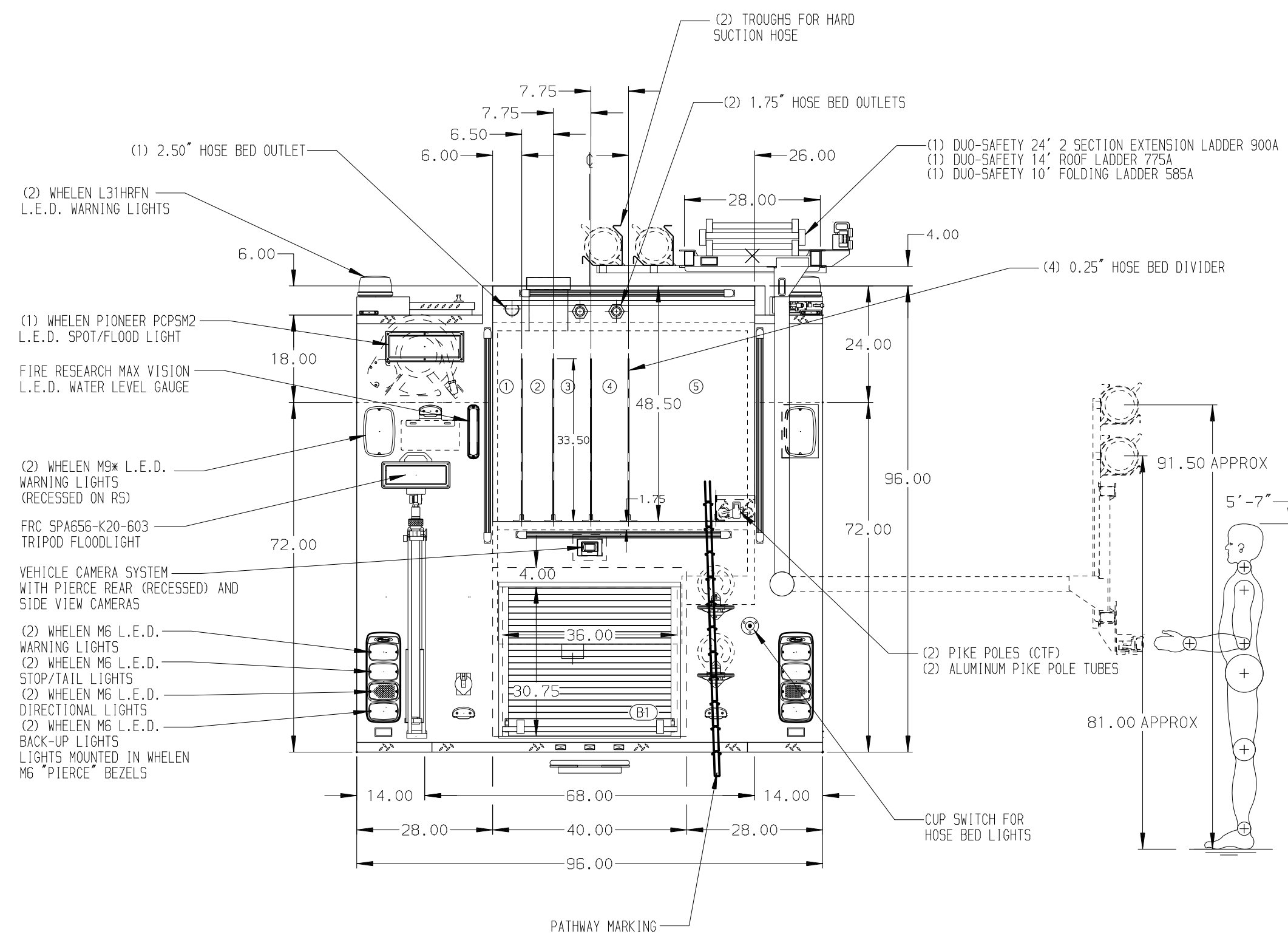
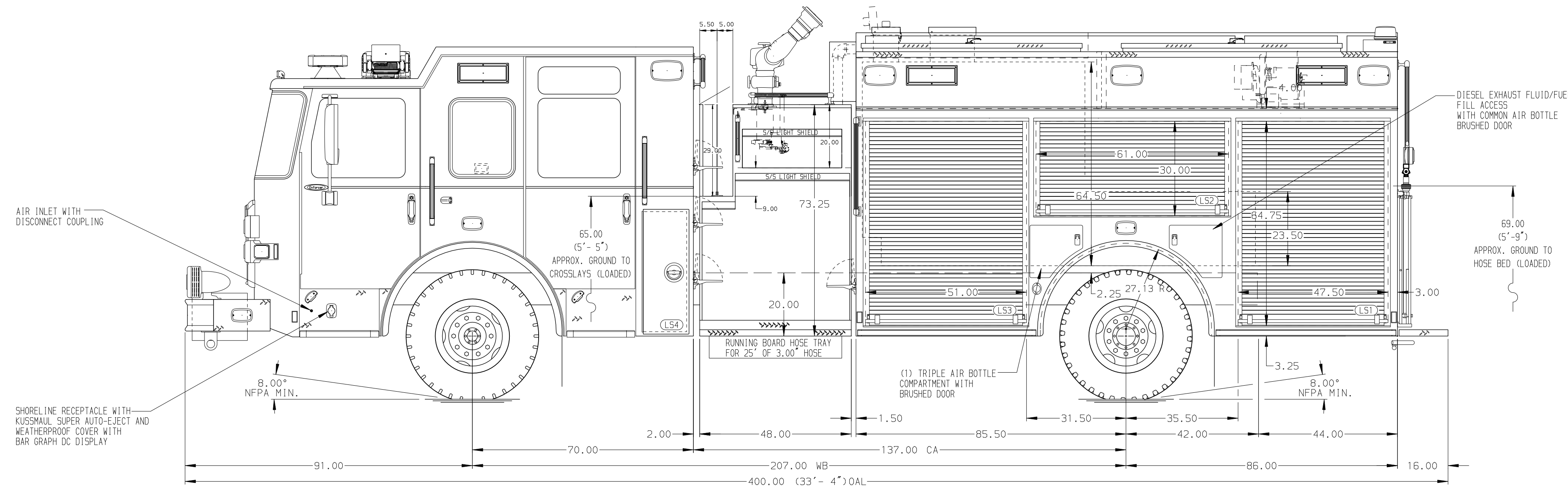


- HOSEBED CAPACITIES
- ① 300' OF 2.50" D.J.POLY HOSE
 - ② 300' OF 2.50" D.J.POLY HOSE
 - ③ 250' OF 1.75" D.J.POLY HOSE
 - ④ 225' OF 1.75" D.J.POLY HOSE
 - ⑤ 1000' OF 5.00" D.J.POLY HOSE



ALUMINUM BODY

SIDE ROLL AND FRONTAL IMPACT PROTECTION

NOTE
DIMENSIONS SHOWN ARE APPROXIMATE AND ARE SUBJECT TO MINOR DEVIATIONS AS MAY OCCUR OR BE NECESSARY IN CONSTRUCTION. MINOR DETAILS NOT SHOWN.

1. BATTERY CHARGER/COMPRESSOR LOCATED IN DRIVER SIDE HATCH COMPARTMENT
2. BATTERY CHARGER INDICATOR BEHIND DRIVER'S SEAT DISPLAYED THROUGH WINDOW
3. SUB FEED BREAKER BOX IN COMPARTMENT LS3
4. DUAL L.E.D. LIGHT STRIPS LOCATED IN HOSE BED
5. DUAL L.E.D. LIGHT STRIPS LOCATED ON THE FRONT OF THE HOSEBED
6. ELASTIC PULL STRAP FOR DOOR ON COMPARTMENTS LS1, LS2, LS3, LS4, RS1, RS2, AND RS3
7. ONE FULL WIDTH/DEPTH ADJUSTABLE SHELF IN COMPARTMENT LS3 AND B1; TWO IN RS1 AND RS3; FOUR IN LS1
8. ONE ADJUSTABLE SLIDE-OUT TRAY IN COMPARTMENT LS1
9. ONE FLOOR MOUNTED SLIDE-OUT TRAY IN COMPARTMENTS LS1, LS3, RS1, RS3, AND B1

10. 10" WIDE SLIDE-OUT TRAY WITH ALUMINUM TOOLBOARD WITH PEGBOARD PATTERN IN COMPARTMENT LS1
11. SLIDE-OUT TOOL BOARD WITH PEGBOARD PATTERN IN COMPARTMENT LS3
12. SWING-OUT TOOL BOARD WITH PEGBOARD PATTERN IN COMPARTMENT LS2
13. ONE VERTICAL DIVIDER IN COMPARTMENTS LS1 AND LS3
14. CATCH (C3) DRAWER ASSEMBLY IN COMPARTMENT LS3
15. PAC TRAC ON THE REAR WALL OF COMPARTMENTS LS3, RS1, RS2, AND RS3
16. CIRCUIT BREAKER PANEL IN COMPARTMENT LS3
17. ONE HANNAY ELECTRIC REWIND CORD REEL MODEL 1618-17-18 LOCATED IN LHI

REV	DATE	BY	CH	ENFORCER
24MAR21	SAM	PPE		CHASSIS DATA
18FEB21	SAM	PPE		MAKE
08FEB21	SAM	PPE		PIERCE
08JAN21	SAM	PPE		MODEL
22OCT20	CDU	KOU		

Pierce MANUFACTURING INC.		JOB NO.	35428
		SCALE	1:24
		DATE	
TITLE	2000-D-1000 WATER/30 FOAM, 171" BODY, SIDE CONTROL CROSSLAYS, DELUGE, LADDER RACK, FOAM SYSTEM	DRAWN BY	SAM
FOR	REHOBOTH BEACH REHOBOTH BEACH, DELAWARE	CHECKED BY	CDU
DWG NO.	35428AD	SHEET SIZE	D
		SHEET NO.	1 OF 1