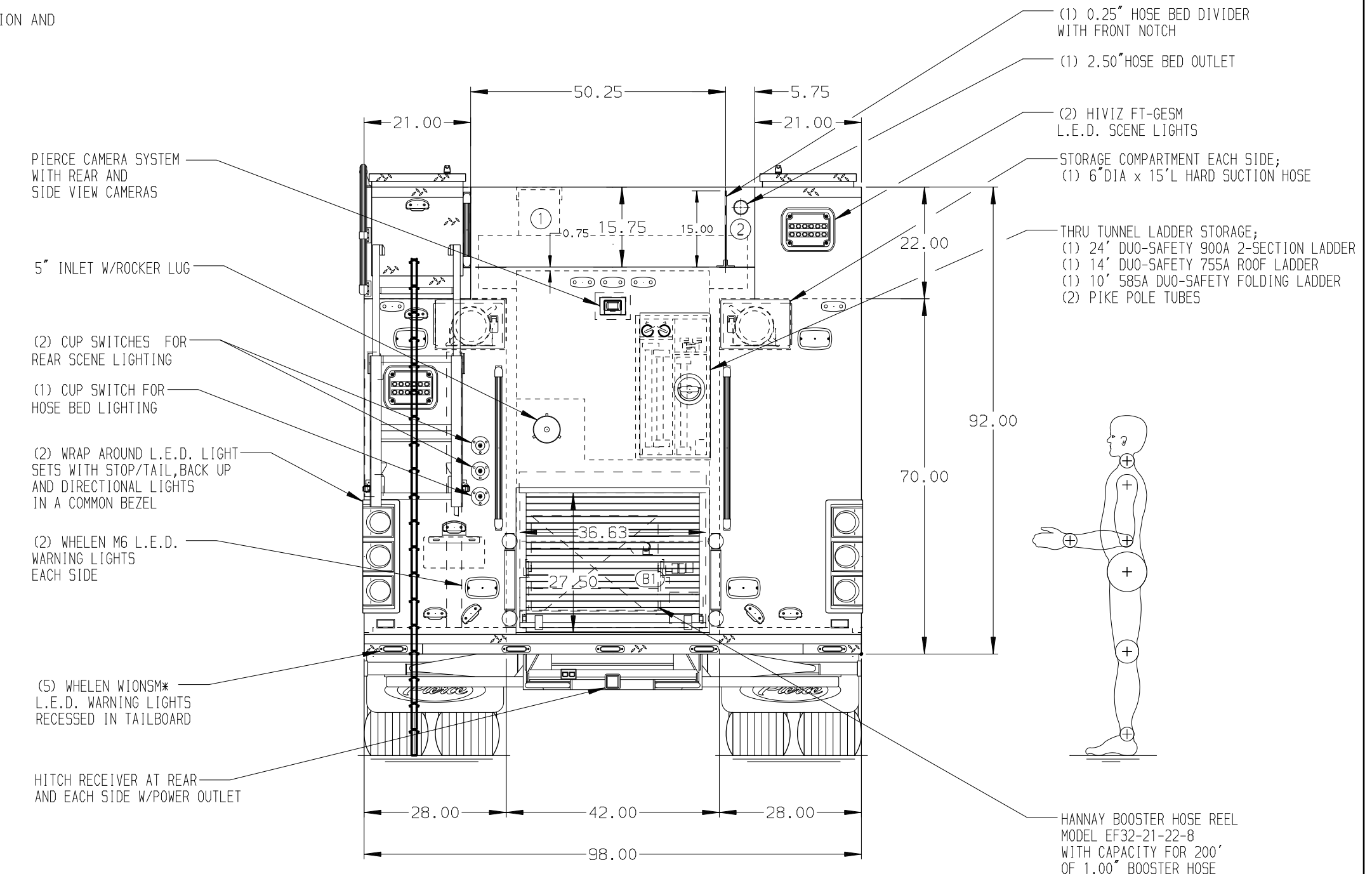
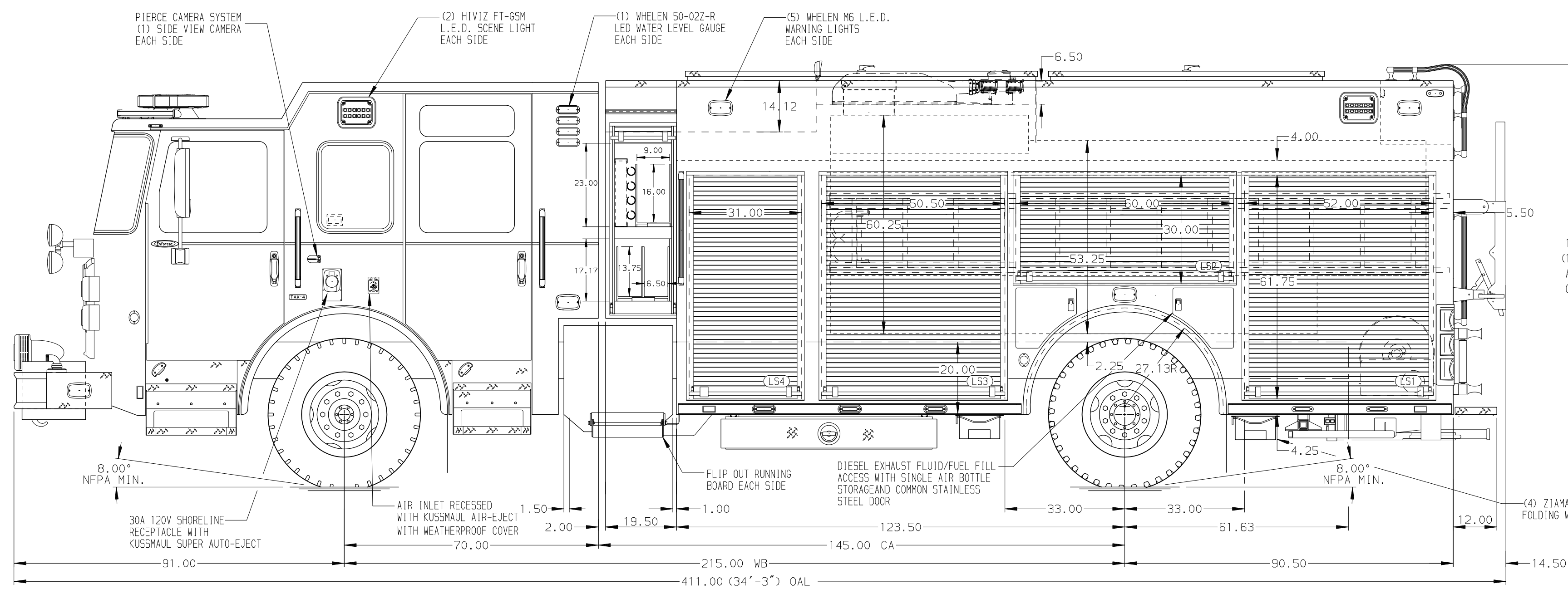


- HOSEBED CAPACITIES
 (1) 1500' OF 5.00" MERCEDES HOSE
 (2) 150' OF 2.50" MERCEDES HOSE



ALUMINUM BODY

NOTE
 DIMENSIONS SHOWN ARE APPROXIMATE AND ARE SUBJECT TO MINOR DEVIATIONS AS MAY OCCUR OR BE NECESSARY IN CONSTRUCTION.
 MINOR DETAILS NOT SHOWN.

- ONSPOT AUTOMATIC TIRE CHAINS TO BE PROVIDED AT REAR
- BATTERY CHARGER LOCATED BEHIND DRIVER SEAT
- BATTERY CHARGER INDICATOR BEHIND DRIVER'S SEAT DISPLAYED THROUGH WINDOW
- DUAL L.E.D. LIGHT STRIPS LOCATED IN HOSE BED
- ONE FULL WIDTH/DEPTH ADJUSTABLE SHELF IN COMPARTMENTS LS1 AND RS1
- 120V DUPLEX RECEPTACLE LOCATED IN COMPARTMENTS LS1,LS2,LS3,RS1,RS2,RS3 AND RS4
- (1) WHELEN M4V2 LED MOUNTED IN EACH INTERIOR CAB DOOR
- OIL DRY HOPPER LOCATED IN ROOF HATCH COMPARTMENT RH1

REV	DATE	BY	CH	ENFORCER
19JAN21	LME	DTS		CHASSIS DATA
08JAN21	JRC	CDU		MAKE
13NOV20	LME	CHR		PIERCE
29SEP20	JRC	CDU		MODEL

		JOB NO.	35404
		SCALE	DATE
TITLE	1500-D-1000 GAL POLY, 214" PUC RESCUE LADDERS THRU TANK, (3) CROSSLAYS, DELUGE	DRAWN BY	JRC
FOR	BAREVILLE FIRE COMPANY NO.1 LEOLA, PENNSYLVANIA	CHECKED BY	NPE
DWG NO.	35404AD	SHEET SIZE	SHEET NO.
		D	1 OF 1