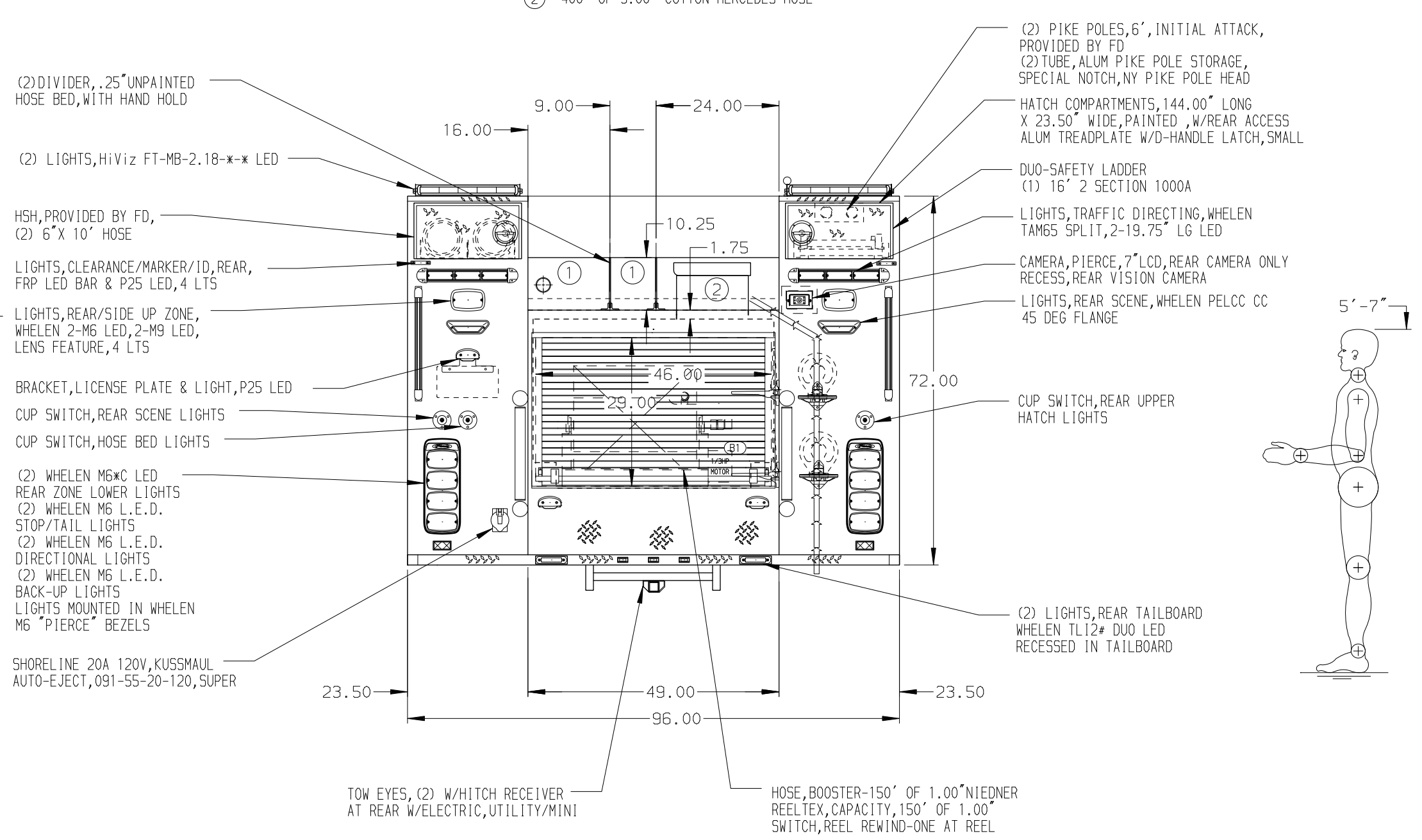
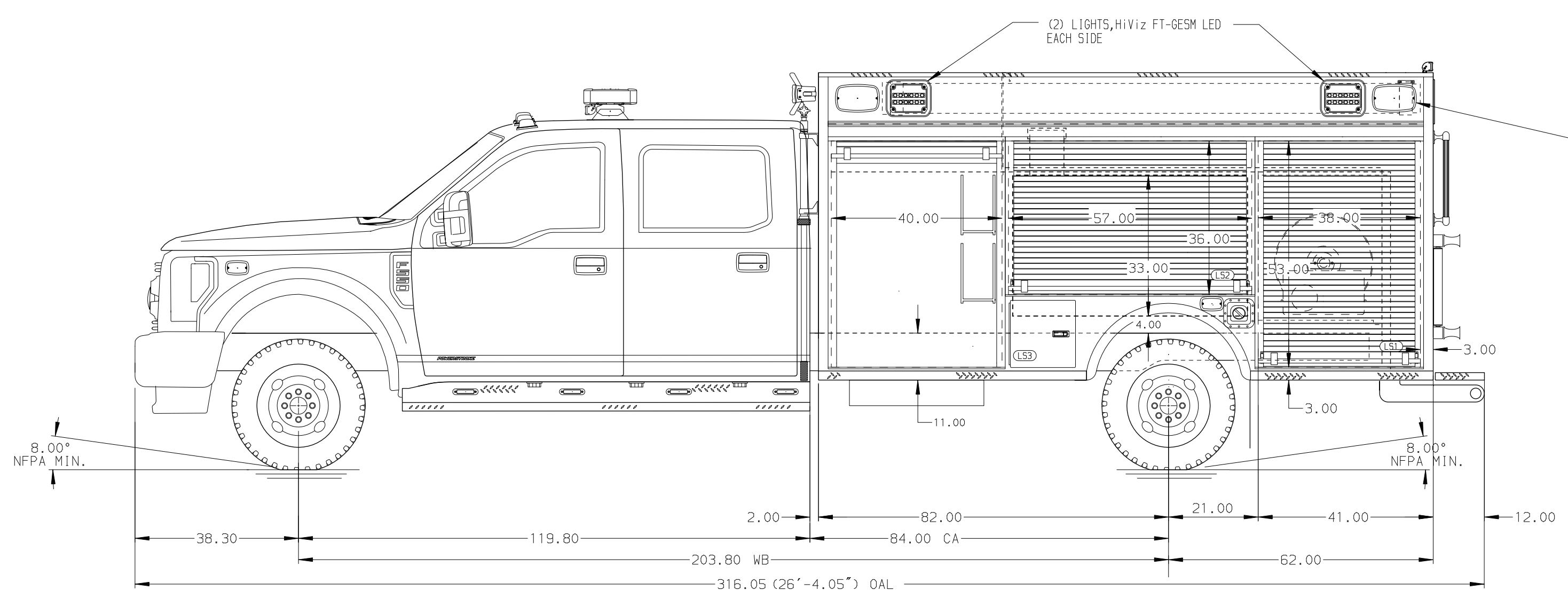


- HOSEBED CAPACITIES
- ① 300' OF 5.00" COTTON MERCEDES HOSE
  - ② 400' OF 3.00" COTTON MERCEDES HOSE



ALUMINUM BODY

NOTE  
DIMENSIONS SHOWN ARE APPROXIMATE AND ARE SUBJECT TO MINOR DEVIATIONS AS MAY OCCUR OR BE NECESSARY IN CONSTRUCTION. MINOR DETAILS NOT SHOWN.

REV.	DATE	BY	CHK'D
24FEB21		RHU	GSC
14JAN21		JLA	GSC
02NOV20		JLA	RWI

<b>PIERCE MANUFACTURING INC.</b> BRADENTON, FLORIDA		JOB NO.	35402
		DATE	SCALE 1:24
TITLE	1500-D-300 POLY, 84" CA, MINI PUMPER BODY (2) SPEEDLAYS	15OCT20	DRAWN BY JLA
FOR	MASTERTONVILLE FIRE COMPANY MANHEIM, PENNSYLVANIA	16OCT20	CHK'D BY RWI
DRWG. NO.	35402AD	SHEET NO.	SHEET SIZE D
		1 OF 1	