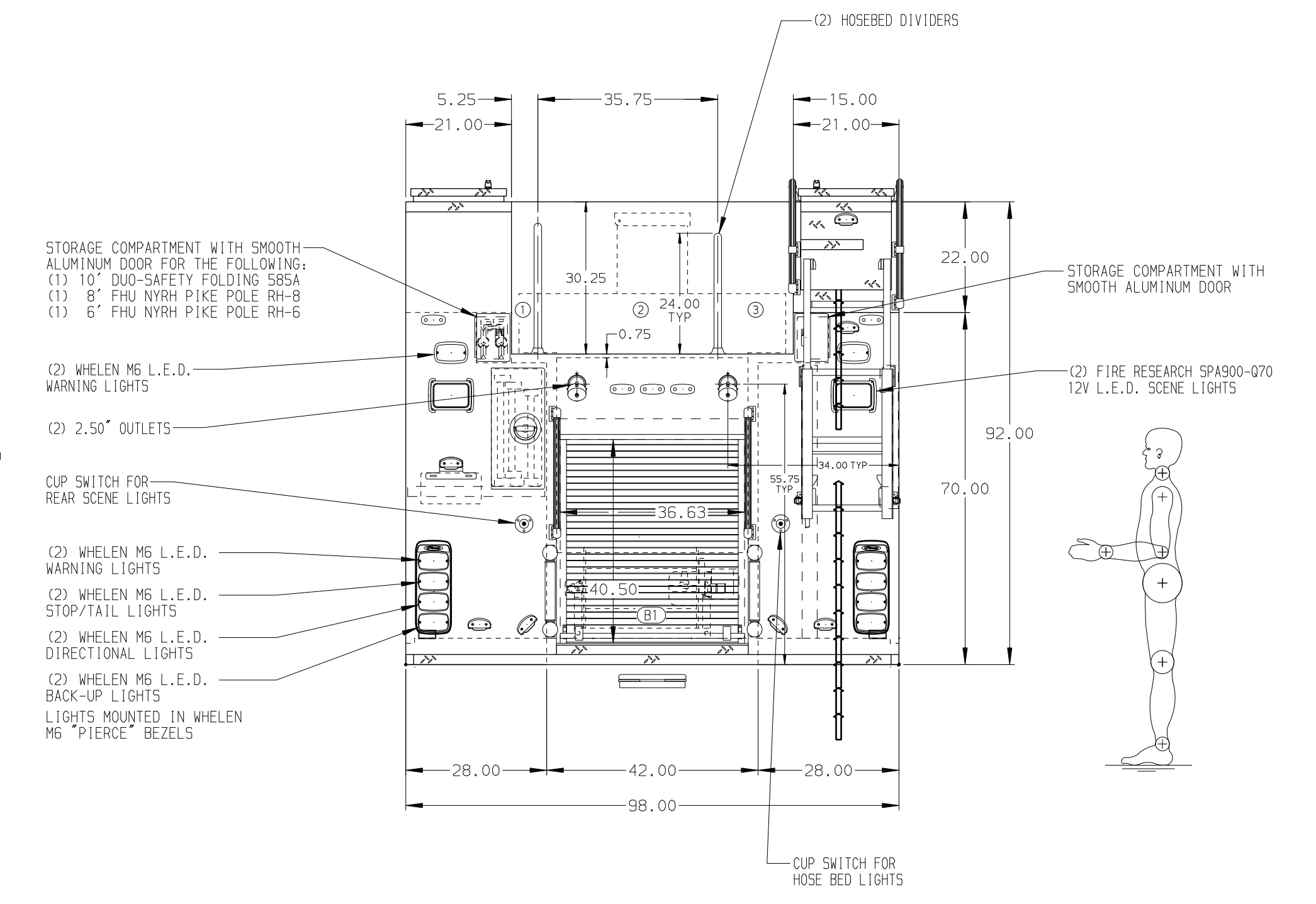
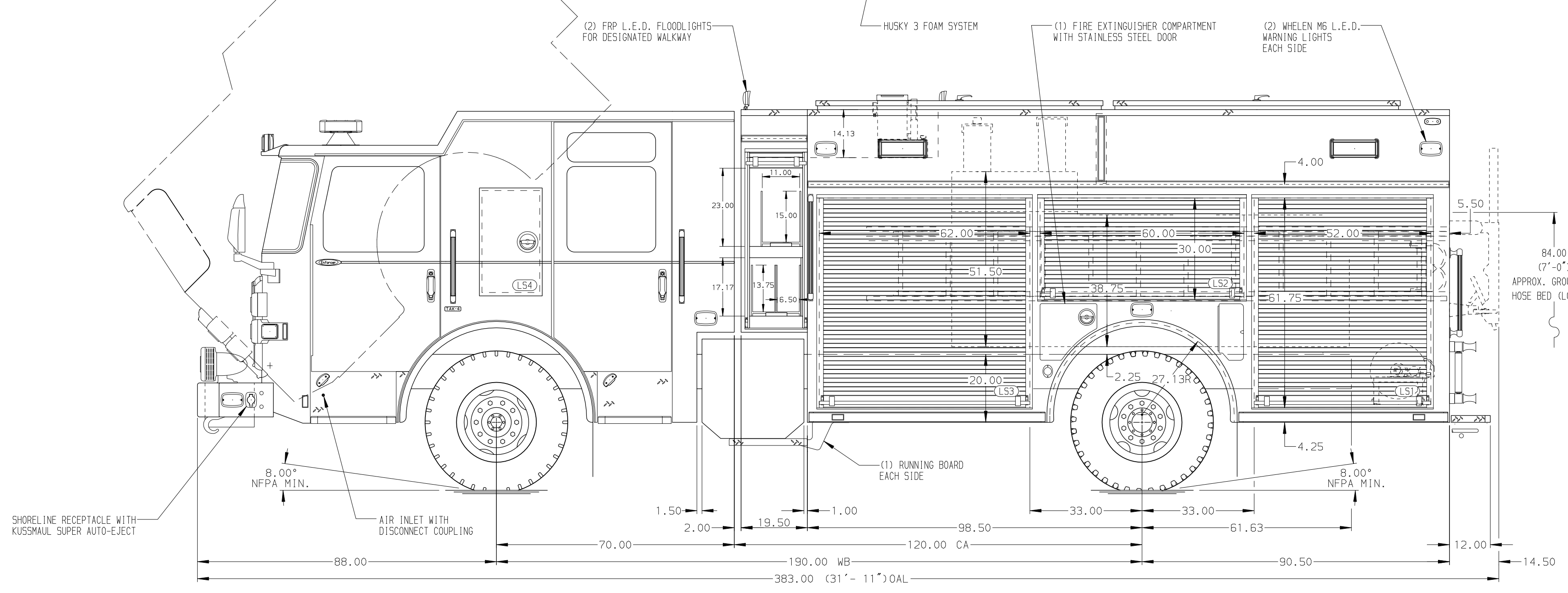


- HOSEBED CAPACITIES
- ① 250' OF 2.50" D.J. POLY HOSE
  - ② 1000' OF 5.00" D.J. POLY HOSE
  - ③ 300' OF 3.00" D.J. POLY HOSE



ALUMINUM BODY

NOTE  
DIMENSIONS SHOWN ARE APPROXIMATE AND ARE SUBJECT TO MINOR DEVIATIONS AS MAY OCCUR OR BE NECESSARY IN CONSTRUCTION. MINOR DETAILS NOT SHOWN.

1. BATTERY CHARGER LOCATED IN LEFT SIDE EMS COMPARTMENT
2. BATTERY CHARGER INDICATOR LOCATED ON DRIVER'S SEAT RISER
3. DUAL L.E.D. LIGHT STRIPS LOCATED IN HOSE BED
4. SIX FULL WIDTH/DEPTH ADJUSTABLE SHELVES - TWO IN COMPARTMENT L51, ONE IN L53, R52, R53 AND B1
5. ONE FLOOR MOUNTED SLIDE-OUT TRAY IN COMPARTMENTS R51 AND R53
6. ONE ADJUSTABLE TILTING SLIDE-OUT TRAY IN COMPARTMENT R51
7. ONE SWING-OUT ALUMINUM TOOL BOARD IN COMPARTMENT L52
8. CTECH DRAWER ASSEMBLY IN COMPARTMENT L53
9. ONE FLOOR MOUNTED VERTICAL PARTITION IN COMPARTMENT R53
10. PARTITION BETWEEN COMPARTMENTS L51/B1 AND R51/B1
11. HANWAY BOOSTER REEL, MODEL 4130-17-18 WITH 1/3 HP MOTOR AND 150' OF 0.75" BOOSTER HOSE LOCATED IN COMPARTMENT B1
12. ONE LITTLE GIANT VELOCITY LADDER MODEL 13 15413-001 IN COMPARTMENT R53

		JOB NO.	35375
		SCALE	DATE
<b>Pierce MANUFACTURING INC.</b>		DRAWN BY	JRO
TITLE 1500-D-700 WATER/20 FOAM, 189" BODY, SIDE CONTROL CROSSLAYS, DELUGE, FOAM SYSTEM, LADDER STORAGE COMPT		CHECKED BY	WKL
FOR SEAGOVILLE FIRE RESCUE SEAGOVILLE, TEXAS		SHEET SIZE	SHEET NO.
DWG NO.		35375AD	
REV DATE BY CH ENFORCER		1 OF 1	