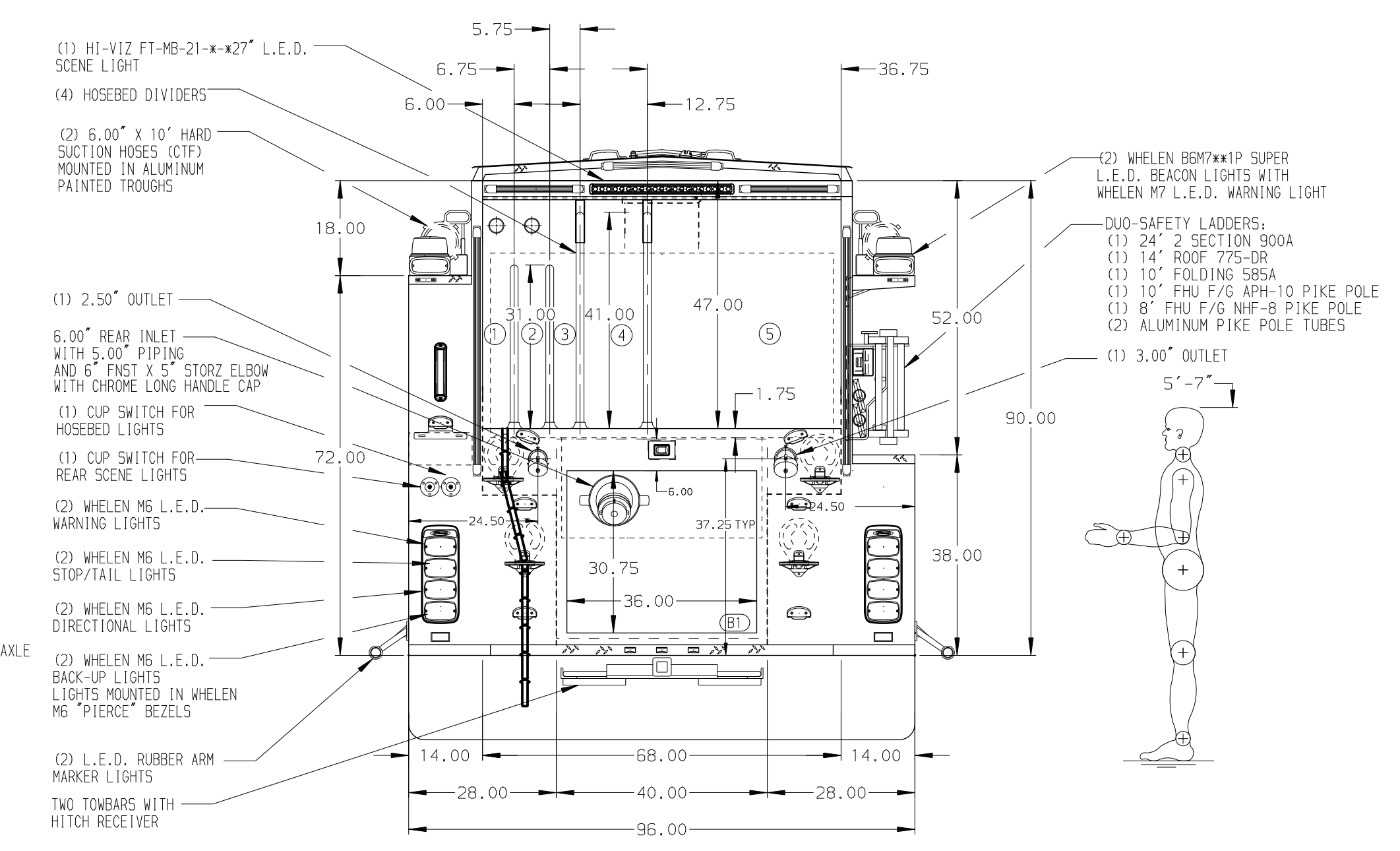


- HOSEBED CAPACITIES
- ① 250' OF 2.50" D.J. POLY HOSE
 - ② 250' OF 1.75" D.J. POLY HOSE
 - ③ 200' OF 1.75" D.J. POLY HOSE
 - ④ 400' OF 3.00" D.J. POLY HOSE
 - ⑤ 1200' OF 4.00" W/4" COUPLINGS, MERCEDES COTTON HOSE



STAINLESS STEEL BODY

SIDE ROLL AND FRONTAL IMPACT PROTECTION

NOTE
DIMENSIONS SHOWN ARE APPROXIMATE AND ARE SUBJECT TO MINOR DEVIATIONS AS MAY OCCUR OR BE NECESSARY IN CONSTRUCTION. MINOR DETAILS NOT SHOWN.

1. VOGEL LUBE SYSTEM PUMP LOCATED PER SHOP ORDER
2. BATTERY CHARGER/COMPRESSOR LOCATED BEHIND PASSENGER'S SEAT
3. BATTERY CHARGER INDICATOR LOCATED ON DRIVER'S SEAT RISER
4. DUAL L.E.D. LIGHT STRIPS LOCATED BELOW HOSE BED COVER
5. REVERSED HINGED DOOR ON COMPARTMENT LS3
6. ONE FULL WIDTH/DEPTH ADJUSTABLE SHELF IN COMPARTMENTS LS3, RS1 AND RS2; TWO IN LS1
7. SWING-OUT TOOL BOARD WITH PEGBOARD PATTERN IN COMPARTMENT LS2
8. PAC TRAC ON BACK WALL OF COMPARTMENTS LS2 AND LS3
9. AIR INLET WITH DISCONNECT COUPLING LOCATED IN D5 STEP WELL
10. CHOCK MOUNTING BRACKETS PROVIDED BY CUSTOMER

REV	DATE	BY	CH	ENFORCER
1	11DEC20	LME	CSH	PIERCE
2	28OCT20	LME	CSH	MODEL

		JOB NO.	35371		
		SCALE	DATE		
CHASSIS DATA MAKE MODEL ENFORCER	TITLE	1500-D-750 GAL POLY, 140" FH FDLER L.S., LOW FDLER R.S., LADDER BRACKETS, (2) XLYS, (1) DEADLAY, DELUGE	DRAWN BY	LME	12AUG20
	FOR	SCARBOROUGH FIRE DEPARTMENT SCARBOROUGH, MAINE	CHECKED BY	EGO	12AUG20
	DWG NO.	35371AD	SHEET SIZE	D	SHEET NO.
					1 OF 1