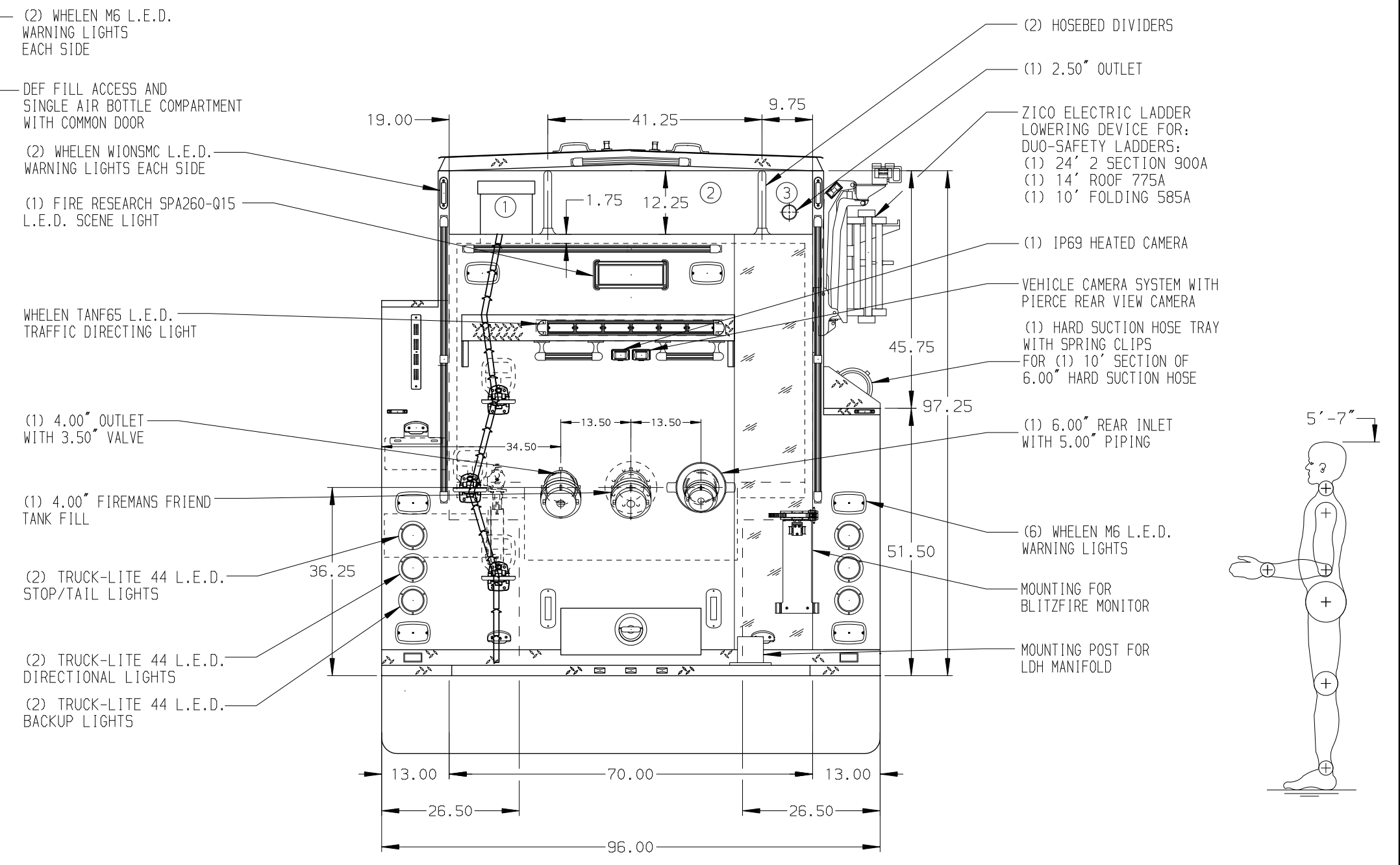
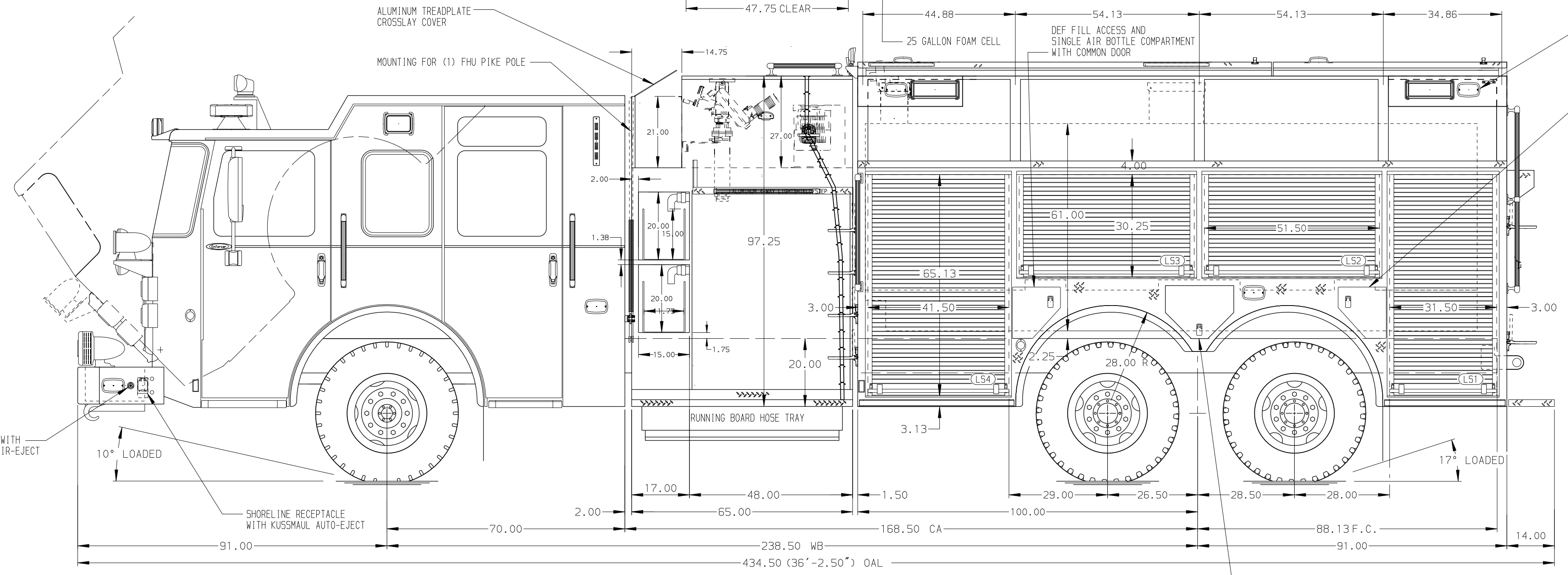


**HOSEBED CAPACITIES**

- ① 300' OF 2.50\"/>



ALUMINUM BODY

MAXIMUM O.A.H. 144"

**NOTE**  
DIMENSIONS SHOWN ARE APPROXIMATE AND ARE SUBJECT TO MINOR DEVIATIONS AS MAY OCCUR OR BE NECESSARY IN CONSTRUCTION. MINOR DETAILS NOT SHOWN.

1. BATTERY CHARGER LOCATED IN COMPARTMENT LS4
2. ONE FULL WIDTH/DEPTH ADJUSTABLE SHELF IN COMPARTMENT LS2,LS3,LS1,RS4,TWO IN LS1,LS4
3. ONE FLOOR MOUNTED SLIDE-OUT TRAY IN COMPARTMENT LS1,RS1,RS4
4. SLIDE-OUT TOOL BOARD WITH PEGBOARD PATTERN IN COMPARTMENT LS4
5. ONE VERTICAL DIVIDER IN COMPARTMENT LS4
6. TWO ADDITIONAL POLY TRAYS SHIPPED LOOSE
7. TWO ZIAMATIC SAC-44-E FOLDING WHEEL CHOCKS LOCATED IN COMPARTMENT LS4
8. ONE HORIZONTAL PARTITION LOCATED IN COMPARTMENT LS4
9. SENSIBLE PRODUCTS CHANL. PANL IN COMPARTMENT LS4

REV	DATE	BY	CH	ENFORCER
1	11JAN21	JWO	PJP	CHASSIS DATA
2	08DEC20	JWO	PJP	MAKE
3	29OCT20	JWO	PJP	PIERCE
4	18SEP20	JWO	NPE	MODEL

		JOB NO.	35255
		SCALE	1:24
<b>TITLE</b> 1500-D-2525P, 2500 GAL OF WATER W/ 25 GAL FOAM CELL 191\"/>	<b>FOR</b> BELLEVILLE FIRE DEPARTMENT BELLEVILLE, WISCONSIN	DRAWN BY	JWO
		CHECKED BY	NPE
<b>DWG NO.</b> 35255AD	<b>DATE</b> 14SEP20	SHEET SIZE	D
		SHEET NO.	1 OF 1