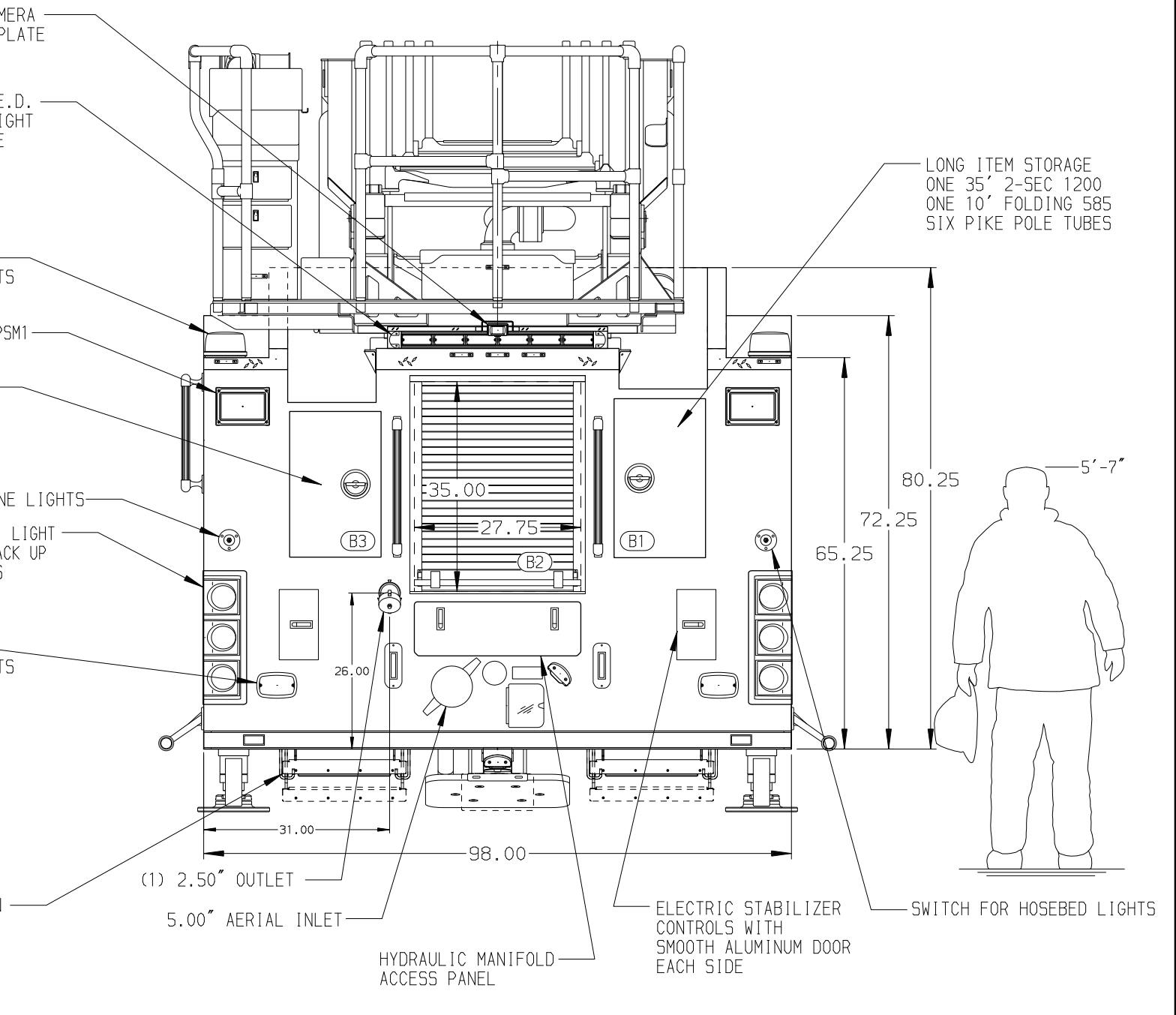
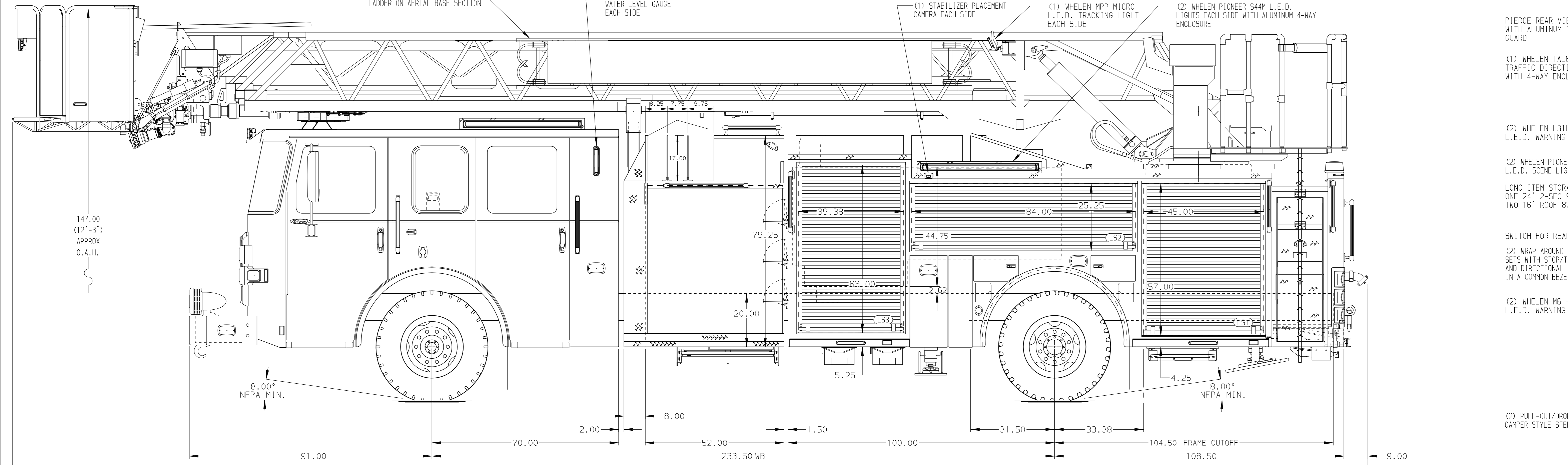
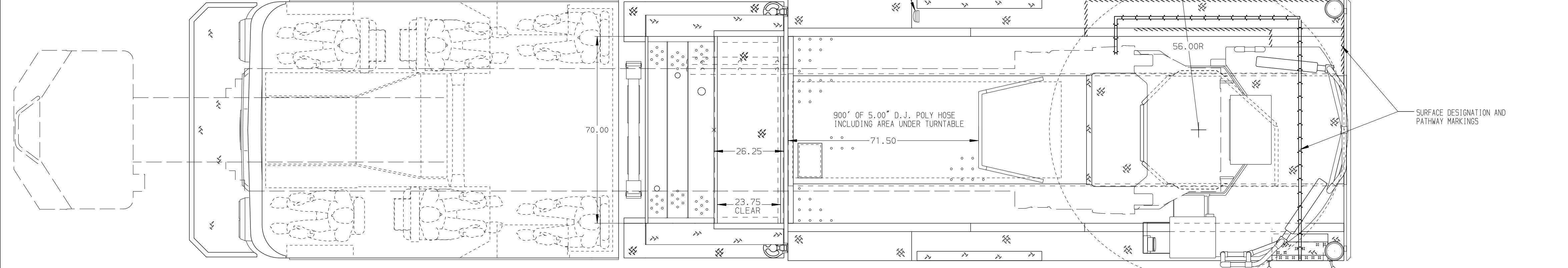


<b>COMPT, LEFT SIDE FRONT</b> Full Height RollUp Forward	<b>WATER TANK</b> 500 Gallon Poly Water Tank Foam System
<b>COMPT, LEFT SIDE REAR</b> Full Height RollUp Rearward	Foam System Not Required
<b>COMPT, RIGHT SIDE FRONT</b> Full Height RollUp Forward	<b>Foam Cell</b>
<b>COMPT, RIGHT SIDE REAR</b> Full Height RollUp Rearward	Foam Cell Not Required



<b>CHASSIS</b> Enforcer Chassis <b>ENGINE</b> 450 HP Cummins L9 Engine	<b>CAB</b> 7000 Enforcer Cab <b>BUMPER</b> 22\"/>
---	--

<b>AXLE, FRONT, CUSTOM</b> 20,000 Lb Dana Axle <b>AXLE, REAR</b> 33,500 Lb Meritor Axle	<b>TRANSMISSION</b> Allison 5th Gen, 3000 EV5 P	<b>PUMPHOUSE</b> 52\"/>
--	--	----------------------------

<b>CROSSLAYS, 1.50"</b> (2) 1.50\"/>
---

<b>SPEEDLAYS</b> Speedlays Not Required <b>GENERATOR</b> Generator Not Required	<b>CHASSIS DATA</b> TITLE: 110' ASCENDANT AERIAL PLATFORM AND BODY ASSEMBLY FOR: CITY OF PARK RIDGE FIRE DEPARTMENT DWG NO.: 35247AD
--	---