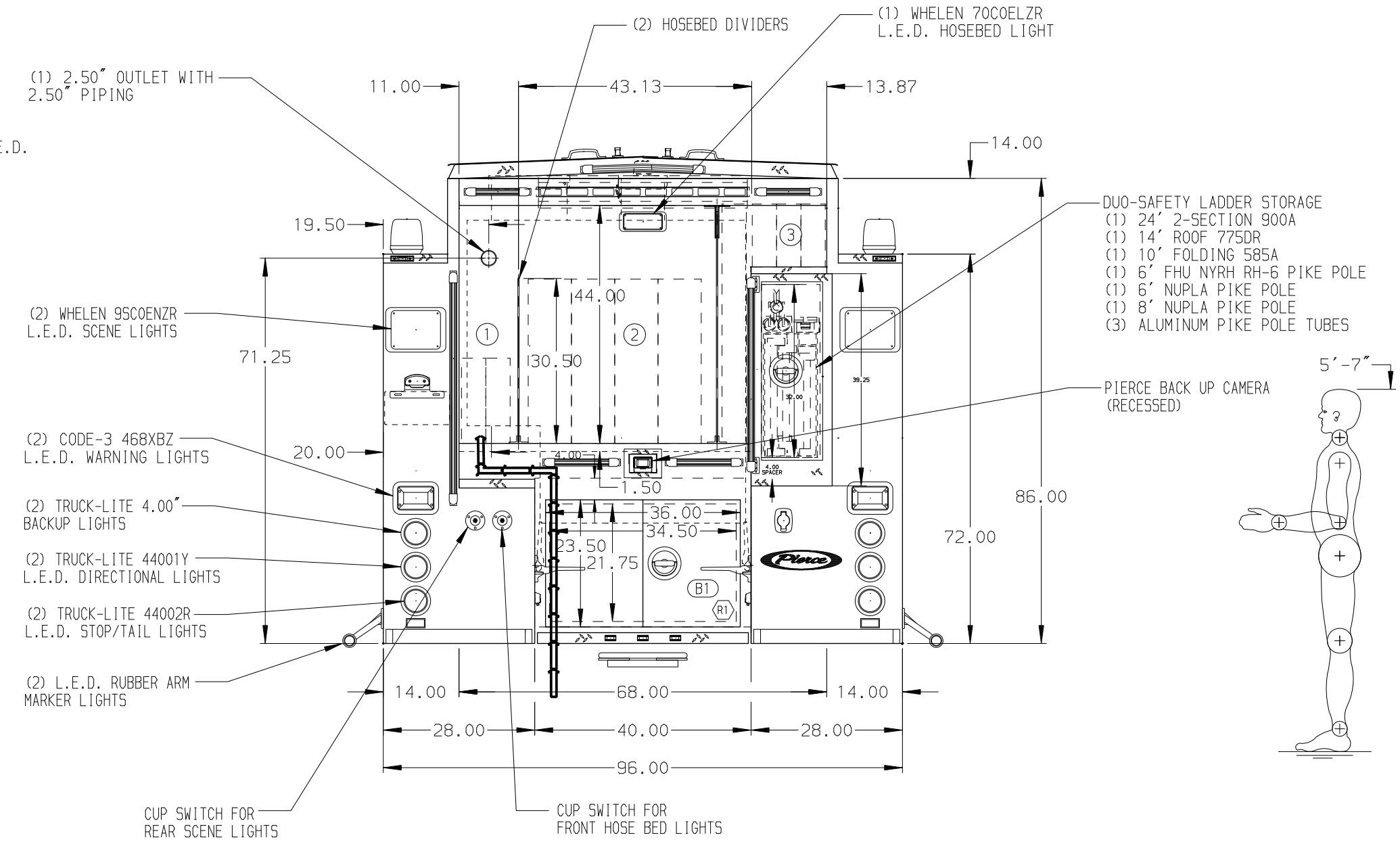
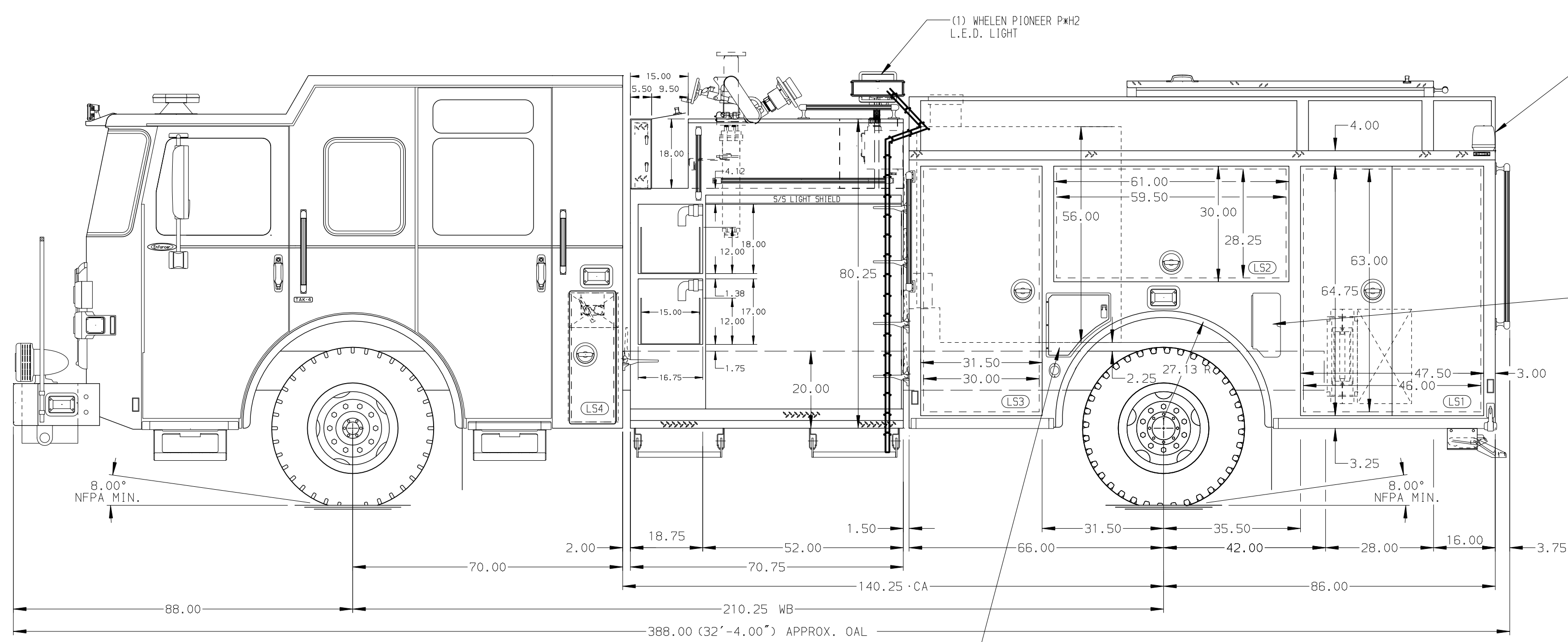


- HOSEBED CAPACITIES
- ① 250' OF 2.50" 2X STACKS D.J. POLY HOSE
 - ② 1000' OF 5.00" 4X STACKS D.J. POLY HOSE
 - ③ 600' OF 2.50" 4X STACKS D.J. POLY HOSE



ALUMINUM BODY

NOTE
DIMENSIONS SHOWN ARE APPROXIMATE AND ARE SUBJECT TO MINOR DEVIATIONS AS MAY OCCUR OR BE NECESSARY IN CONSTRUCTION. MINOR DETAILS NOT SHOWN.

- SUB-FEED CIRCUIT BREAKER PANEL IN DRIVER SIDE FRONT COMPARTMENT.
- WHELEN 700CEL2R L.E.D. LIGHT LOCATED AT THE FRONT OF THE HOSE BED.
- FULL WIDTH/DEPTH ADJUSTABLE SHELVES IN COMPARTMENTS LS1, LS3, RS2, AND RS3.
- ZIAMATIC SOB4 HOLDER BRACKET LOCATED ?
- HORIZONTAL EQUIPMENT MOUNTING TRACKS IN COMPARTMENTS LS1, LS3.
- ONE 120V 6-PLACE RECEPTACLE STRIP LOCATED IN CREW CAB EMS CABINET.
- ONE 120V 6-PLACE RECEPTACLE STRIP LOCATED BEHIND OFFICER'S SEAT.
- SHORELINE 30A 120V RECEPTACLE WITH KUSMALL SUPER AUTO-EJECT LOCATED AT PS REAR BULKHEAD.
- AIR INLET WITH DISCONNECT COUPLING LOCATED AT DS SEAT RISER.

REV	DATE	BY	CH	ENFORCER
22FEB21	SAM	JBL		CHASSIS DATA
24NOV20	SAM	JBL		MAKE
26OCT20	SAM	JBL		PIERCE
14OCT20	SAM	JBL		MODEL
13JUL20	SAM	JBL		

		JOB NO.	35220
		SCALE	DATE
TITLE	1250-D-520,500 GAL WATER W/20 GAL FOAM,152" BODY FLL DPTH LWR EXTND REAR, FULL HGHT FRNT & REAR	DRAWN BY	SAM
FOR	CITY OF MADISON FIRE DEPARTMENT MADISON, WISCONSIN	CHECKED BY	JBL
DWG NO.	35220AD	SHEET SIZE	SHEET NO.
		D	1 OF 1