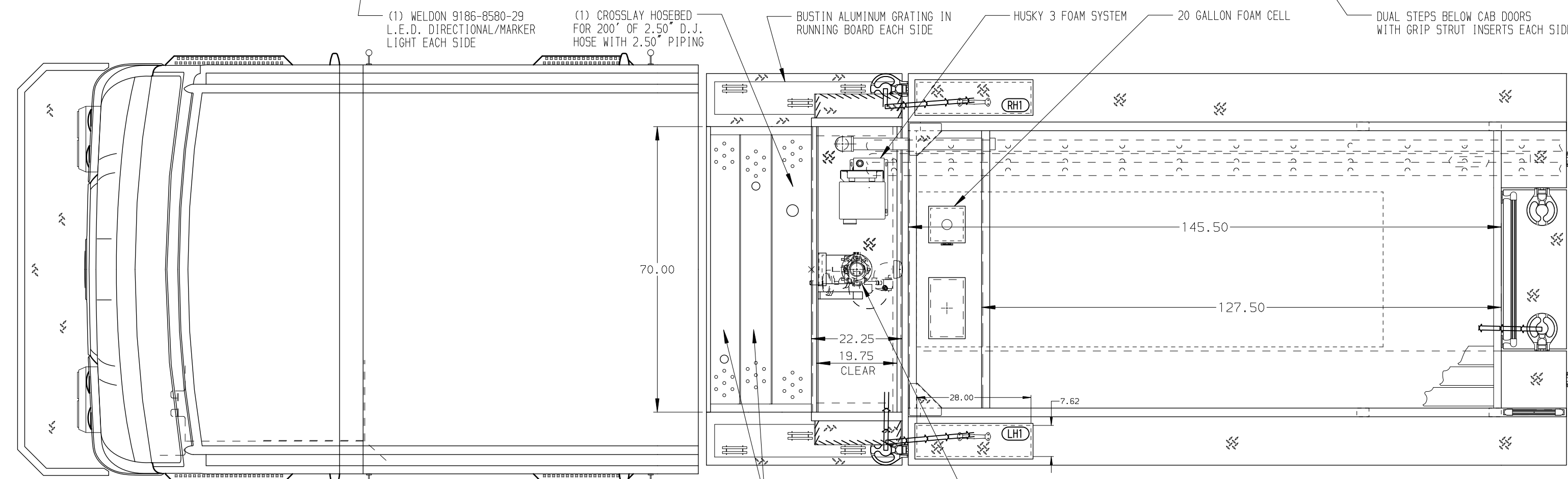
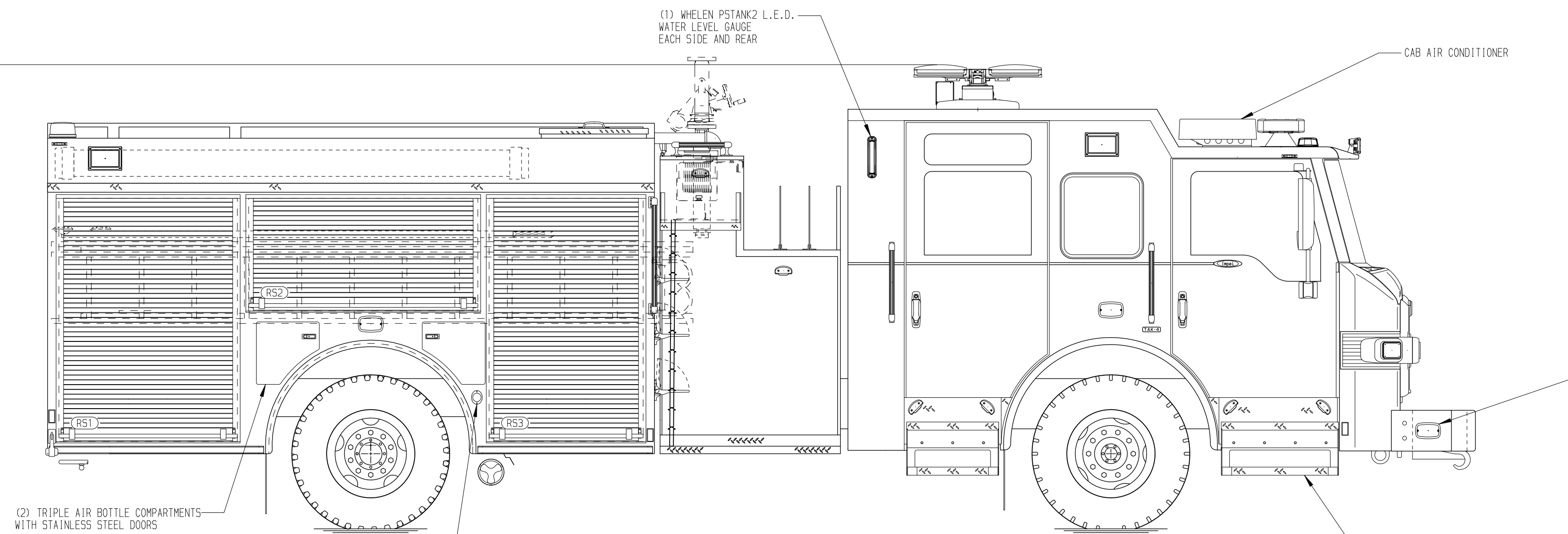
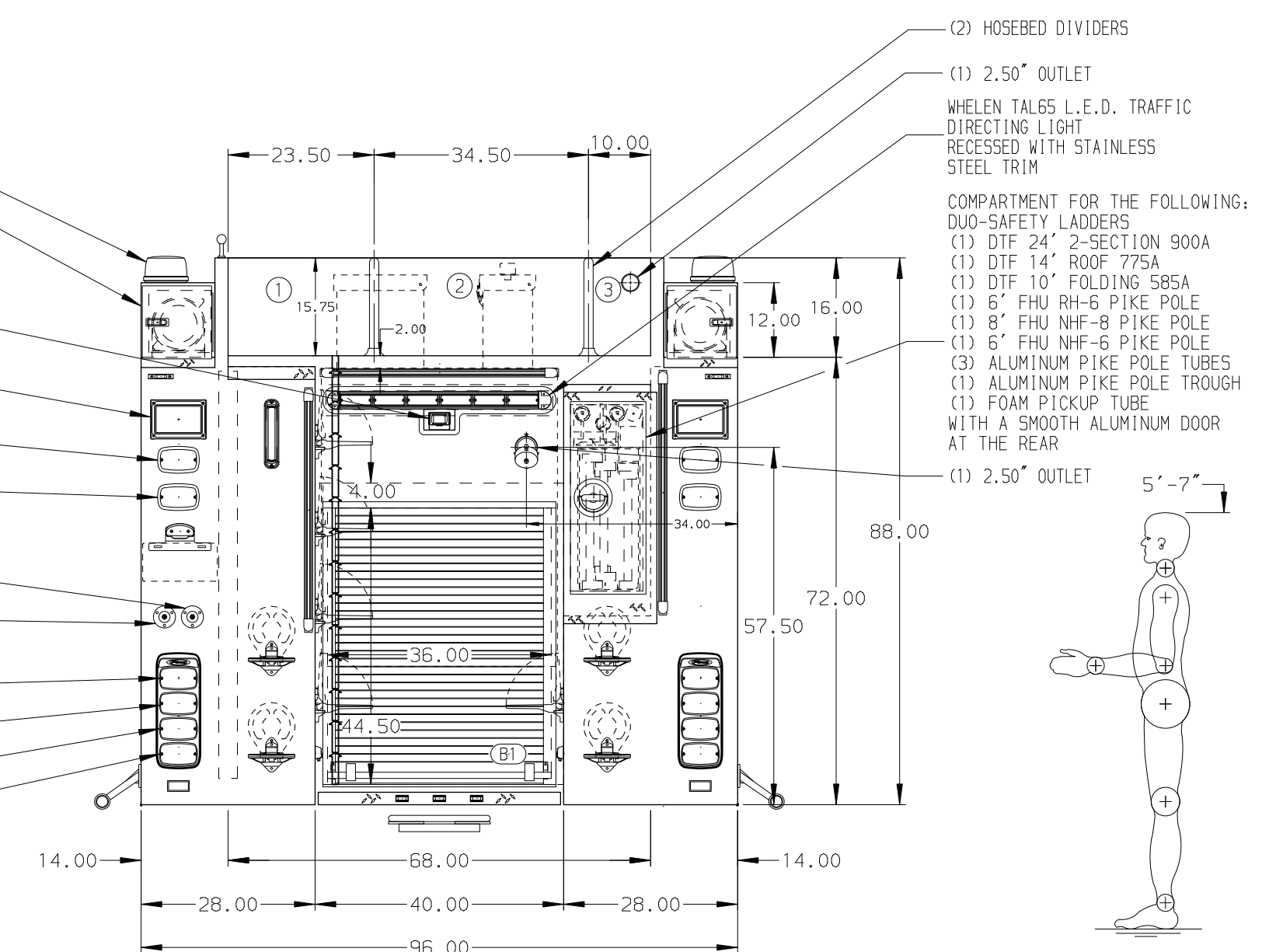
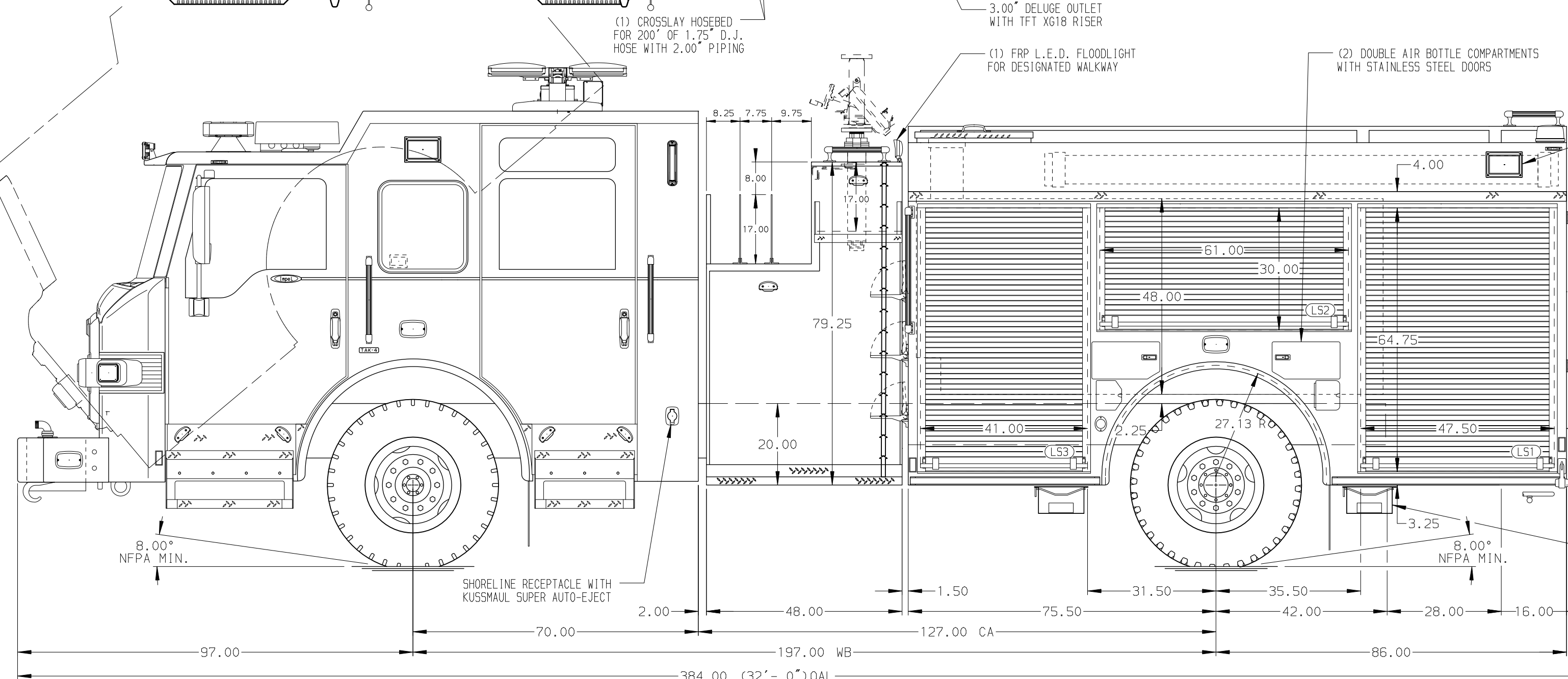


127.00
(10'-7")
APPROX
O.A.H.



- HOSEBED CAPACITIES
- ① 600' OF 3.00" D.J. POLY HOSE
 - ② 600' OF 5.00" D.J. POLY HOSE
 - ③ 250' OF 2.50" D.J. POLY HOSE



ALUMINUM BODY

SIDE ROLL AND FRONTAL IMPACT PROTECTION

NOTE
DIMENSIONS SHOWN ARE APPROXIMATE AND ARE SUBJECT TO MINOR DEVIATIONS AS MAY OCCUR OR BE NECESSARY IN CONSTRUCTION. MINOR DETAILS NOT SHOWN.

1. BATTERY CHARGER LOCATED IN COMPARTMENT LS3
2. BATTERY CHARGER INDICATOR BEHIND DRIVER'S SEAT DISPLAYED THROUGH WINDOW
3. DUAL L.E.D. LIGHT STRIPS LOCATED IN HOSE BED
4. ONE FULL WIDTH/DEPTH ADJUSTABLE SHELF IN COMPARTMENTS RS2,B1, TWO IN LS1,LS3,RS1,RS3
5. ONE FLOOR MOUNTED SLIDE-OUT TRAY IN COMPARTMENT LS1,RS3
6. ONE SWING-OUT ALUMINUM TOOL BOARD IN COMPARTMENT LS2
7. 120V DUPLEX RECEPTACLE LOCATED LS1,RS1,RS3,B1
8. AIR INLET WITH DISCONNECT FITTING AND KUSSMAUL AUTO EJECT LOCATED ON L.S. PUMP PANEL
9. MOUNTING PLATE LOCATED ON BACK WALL OF COMPARTMENTS LS2,RS2

REV	DATE	BY	CH	IMPEL FR
1	160220	JWO	KBO	PIERCE
2	17AUG20	JWO	KOU	MODEL

		JOB NO.	35218
		SCALE	DATE
TITLE	1750-D-750P W/20G FOAM,161",FULL HEIGHT,FDLR	DRAWN BY	JWO
FOR	(3) X-LAYS,DELUGE	CHECKED BY	KOU
	BENNETT FIRE PROTECTION DISTRICT	SHEET SIZE	SHEET NO.
	BENNETT, COLORADO	D	1 OF 1
DWG NO.	35218AD		