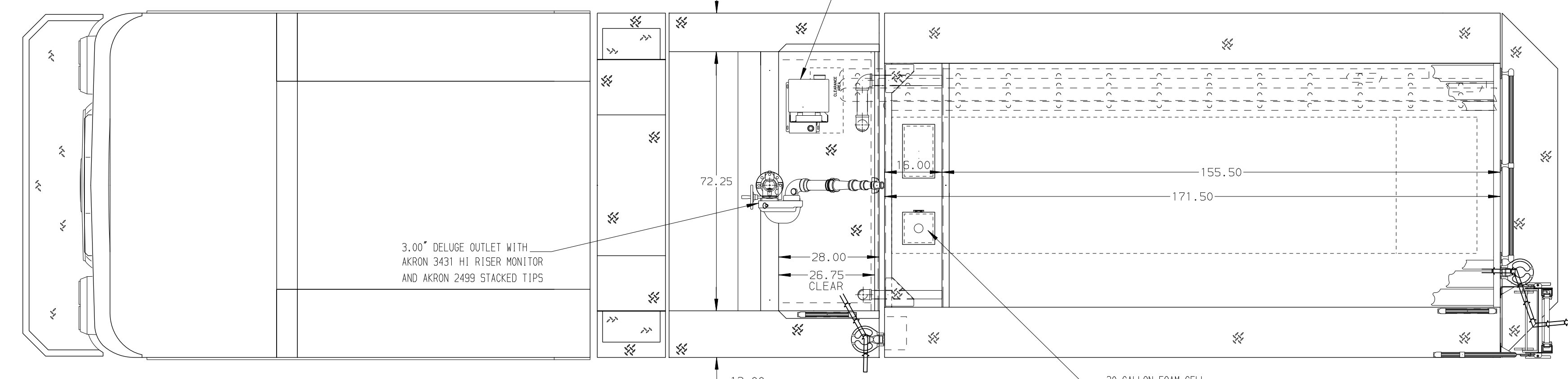
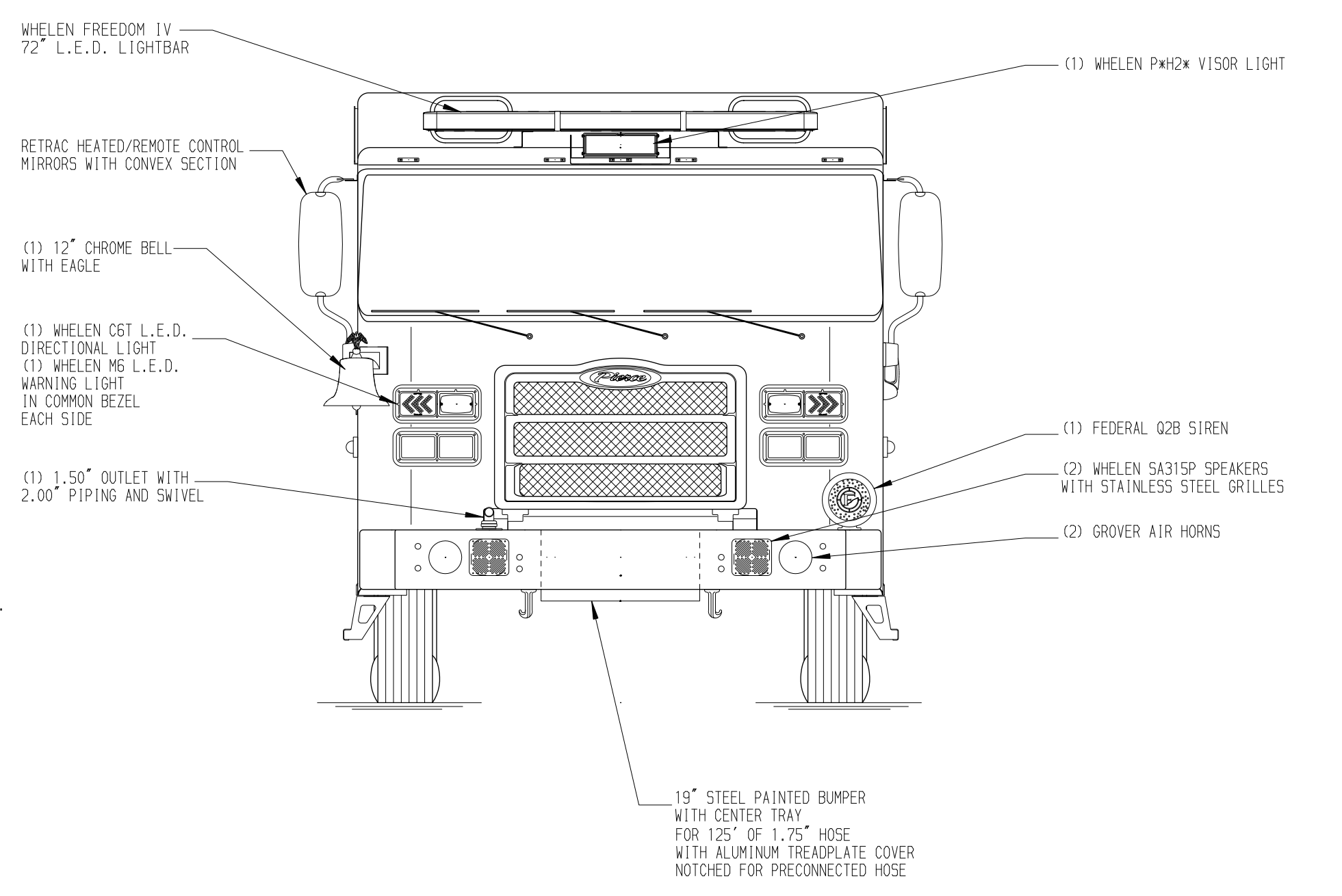
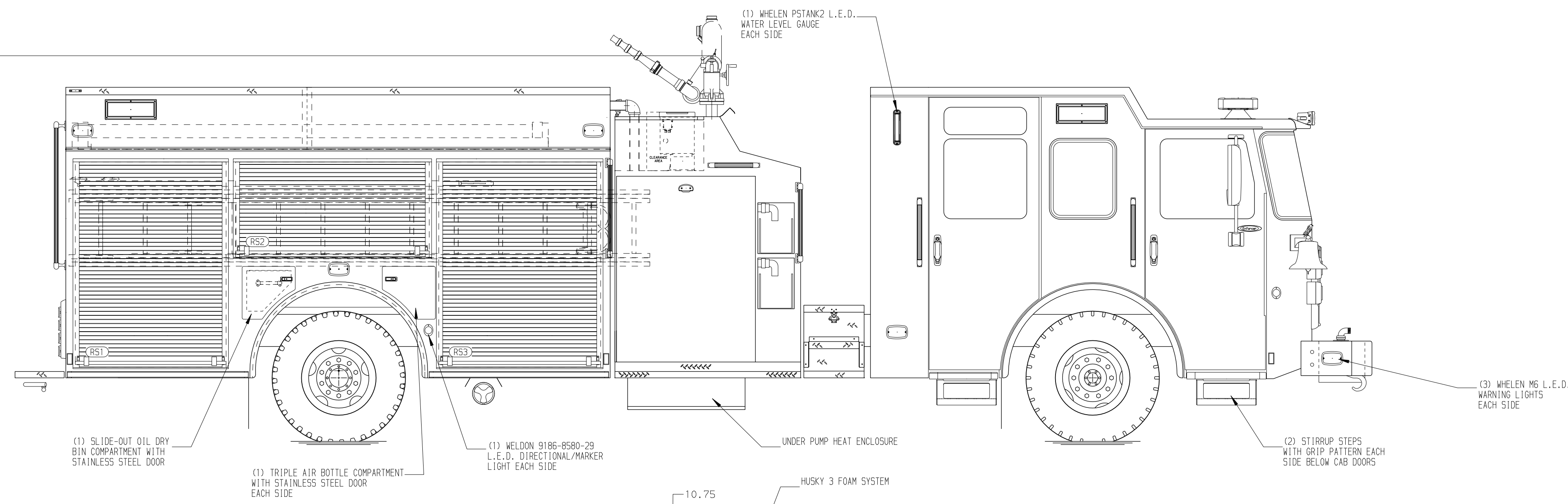
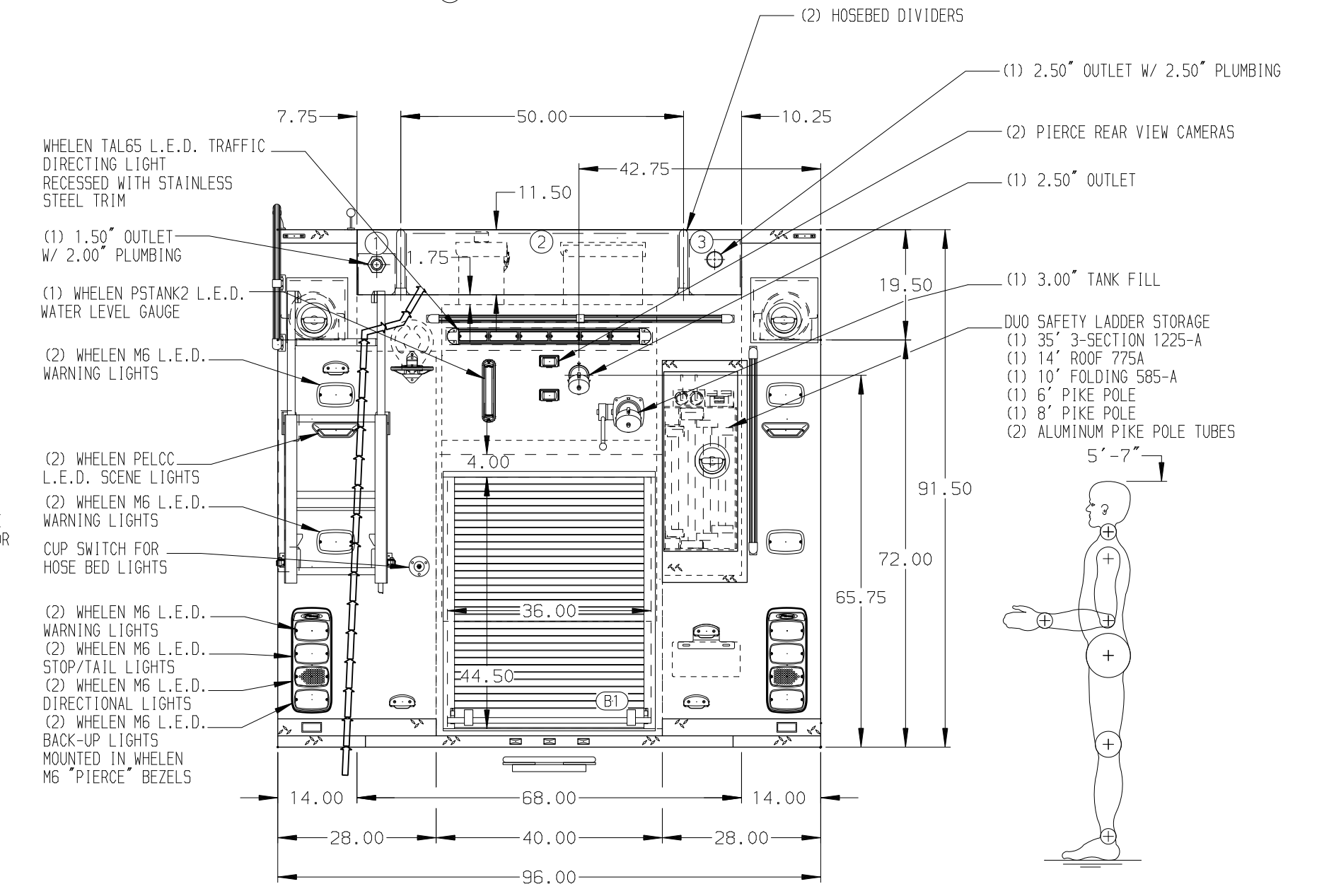
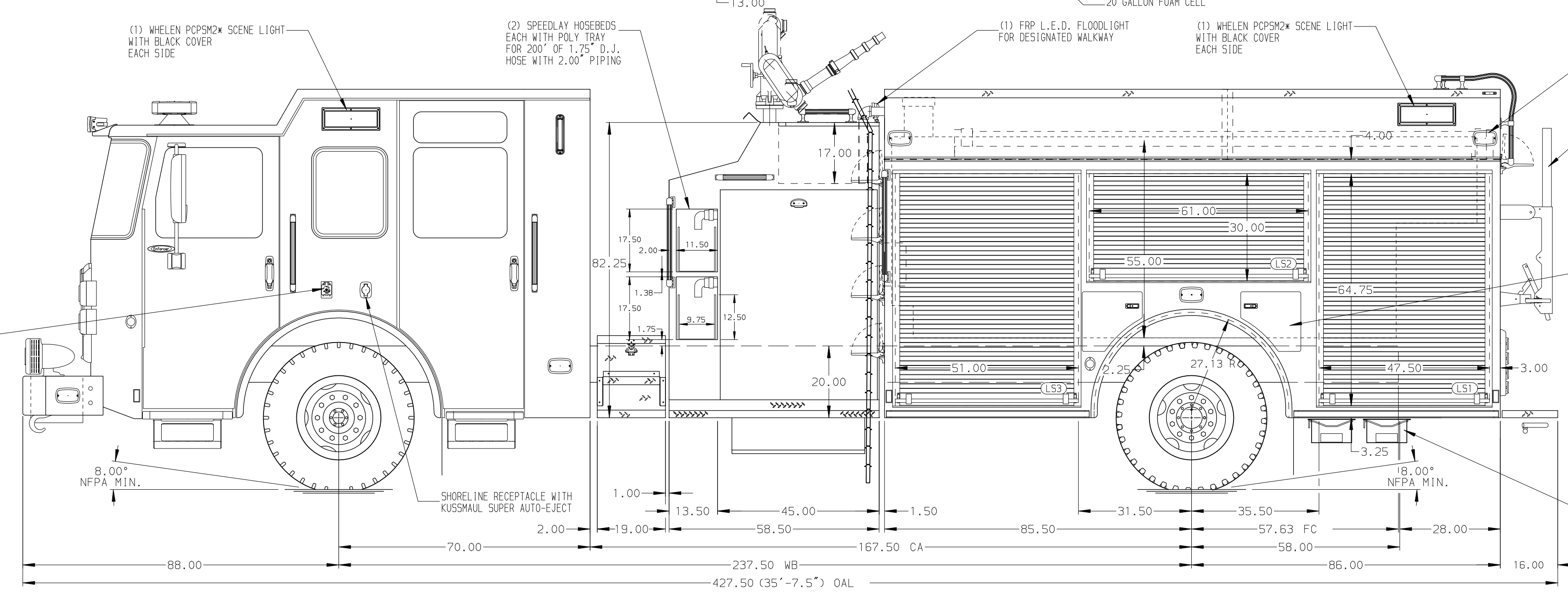


122.00
(10'-2")
APPROX
O.A.H.



- HOSEBED CAPACITIES
- ① 250' OF 1.75" DJ HOSE
 - ② 1000' OF 5.00" DJ HOSE
 - ③ 300' OF 2.50" DJ HOSE



ALUMINUM BODY

NOTE
DIMENSIONS SHOWN ARE APPROXIMATE AND ARE SUBJECT TO MINOR DEVIATIONS AS MAY OCCUR OR BE NECESSARY IN CONSTRUCTION. MINOR DETAILS NOT SHOWN.

1. ONSPOT AUTOMATIC TIRE CHAINS TO BE PROVIDED AT REAR
2. BATTERY CHARGER LOCATED BEHIND DRIVER SEAT
3. BATTERY CHARGER INDICATOR LOCATED ON DRIVER'S SEAT RISER
4. DUAL L.E.D. LIGHT STRIPS LOCATED IN HOSE BED
5. DRIP PAN GUARD FOR ROLL-UP DOOR LOCATED AT L51, L52, L53, R51, R52, R53, AND B1
6. FIVE ADJUSTABLE SHELVES; ONE IN COMPARTMENT L51, TWO IN R51, AND TWO IN R53
7. ONE ADJUSTABLE TILTING SLIDE-OUT TRAY IN COMPARTMENT L51
8. ONE FLOOR MOUNTED SLIDE-OUT TRAY IN COMPARTMENTS L51, R51, R53, AND B1
9. SLIDE-OUT TOOL BOARD WITH PEGBOARD PATTERN IN COMPARTMENT L53
10. SWING-OUT TOOL BOARD WITH PEGBOARD PATTERN IN COMPARTMENTS L52
11. ALUMINUM PEGBOARD ON BACK WALL COMPARTMENTS L52, L53, AND R52
12. ALUMINUM PEGBOARD ON SIDE WALLS OF COMPARTMENT L53
13. HORIZONTAL PARTITION IN COMPARTMENT L53
14. DUPLEX RECEPTACLES IN COMPARTMENTS R52 AND R53
15. HOT WATER HEATER IN PUMP COMPARTMENT
16. ONE SPECIAL HEIGHT FLOOR MOUNTED SLIDE-OUT TRAY IN COMPARTMENT L53

REV	DATE	BY	CH	ENFORCER
18JAN21	SAM	PJP		CHASSIS DATA
03NOV20	SAM	PJP		MAKE
02NOV20	SAM	PJP		PIERCE
09OCT20	SAM	JJR		MODEL
13AUG20	SAM	NPE		

		JOB NO.	35204
		SCALE	DATE
TITLE 1750-D-1200P, 1180G WATER/20G FOAM, 171" BODY (2) SPEEDLAYS, DELUGE, LADDERS BETWEEN TANK AND SS		DRAWN BY	05AUG20
FOR JESUP FIRE DEPARTMENT JESUP, IOWA		CHECKED BY	6AUG20
DWG NO. 35204AD		SHEET SIZE	SHEET NO.
		D	1 OF 1