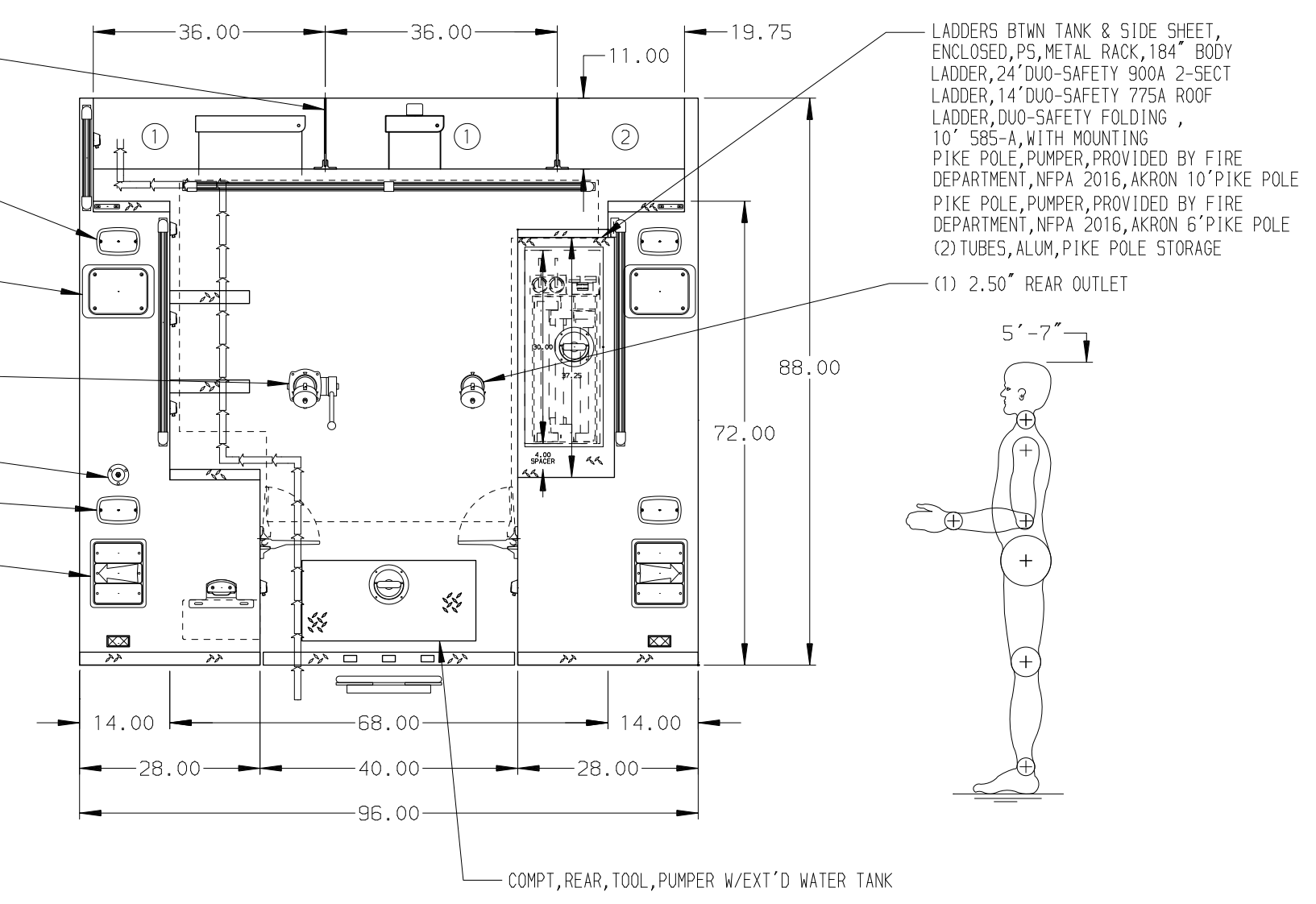
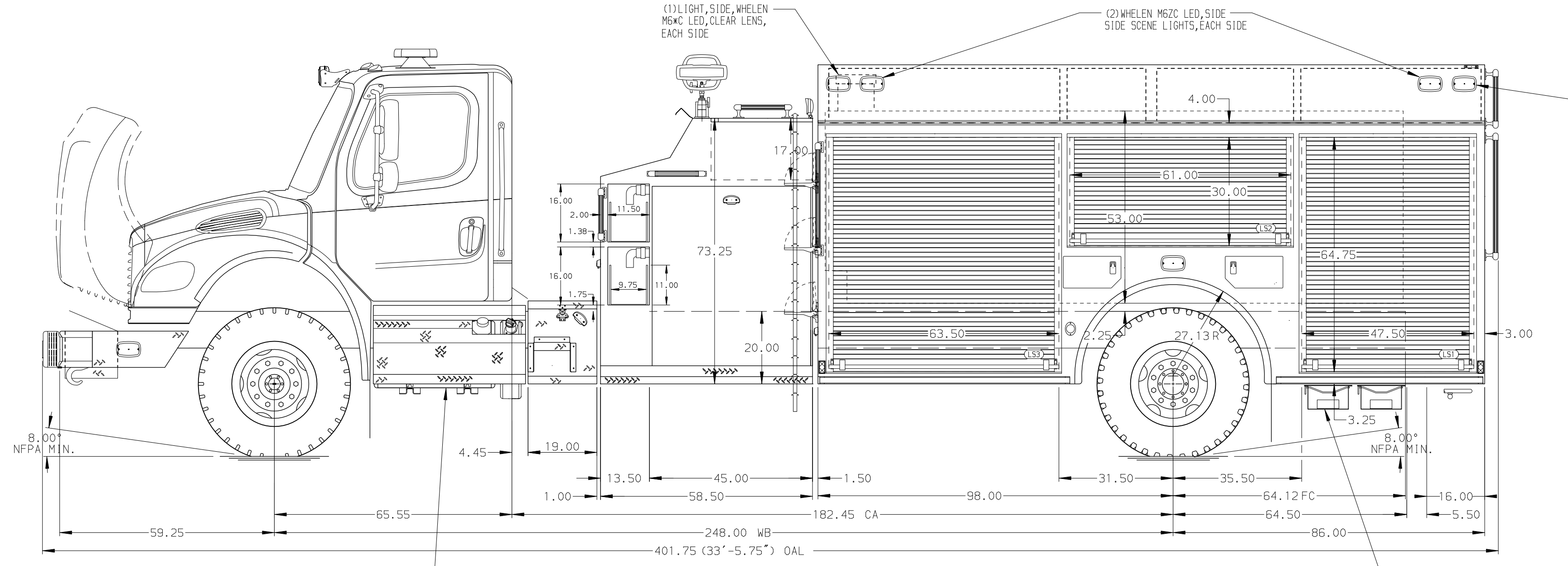


HOSEBED CAPACITIES

① 1500' OF 2.50" D.J. POLYESTER HOSE

② 400' OF 1.50" D.J. POLYESTER HOSE



ALUMINUM BODY

NOTE
DIMENSIONS SHOWN ARE APPROXIMATE AND ARE SUBJECT TO MINOR DEVIATIONS AS MAY OCCUR OR BE NECESSARY IN CONSTRUCTION. MINOR DETAILS NOT SHOWN.

FUEL TANK, 50 GALLON, LEFT SIDE, ALUM DEF TANK, LEFT SIDE, STEP PACKAGE, DELUXE, W/DEF TANK COVER, ALUM 4-WAY, M2, ZOR

09DEC20	RHU	NAS	CHASSIS DATA
23OCT20	RHU	NAS	CHASSIS FL
13AUG20	CRH	RW1	MODEL M2-106
REV.	DATE	BY	CHK'D

<p>MANUFACTURING INC. BRADENTON, FLORIDA</p>		JOB NO.	35187
		SCALE	1:24
TITLE	1250-D-1600P, 20 FOAM, 184" BODY, LS&RS FULL HGT FDLR, 45" TOP MOUNT, (2) 1.5" SPEEDLAYS W/TRAYS, DELUGE	DATE	
FOR	BYRD VOLUNTEER FIRE DEPARTMENT DETROIT, ALABAMA	DRAWN BY	CRH
		CHK'D BY	RW1
DRWG. NO.	35187AD	SHEET NO.	1 OF 1
		SHEET SIZE	D