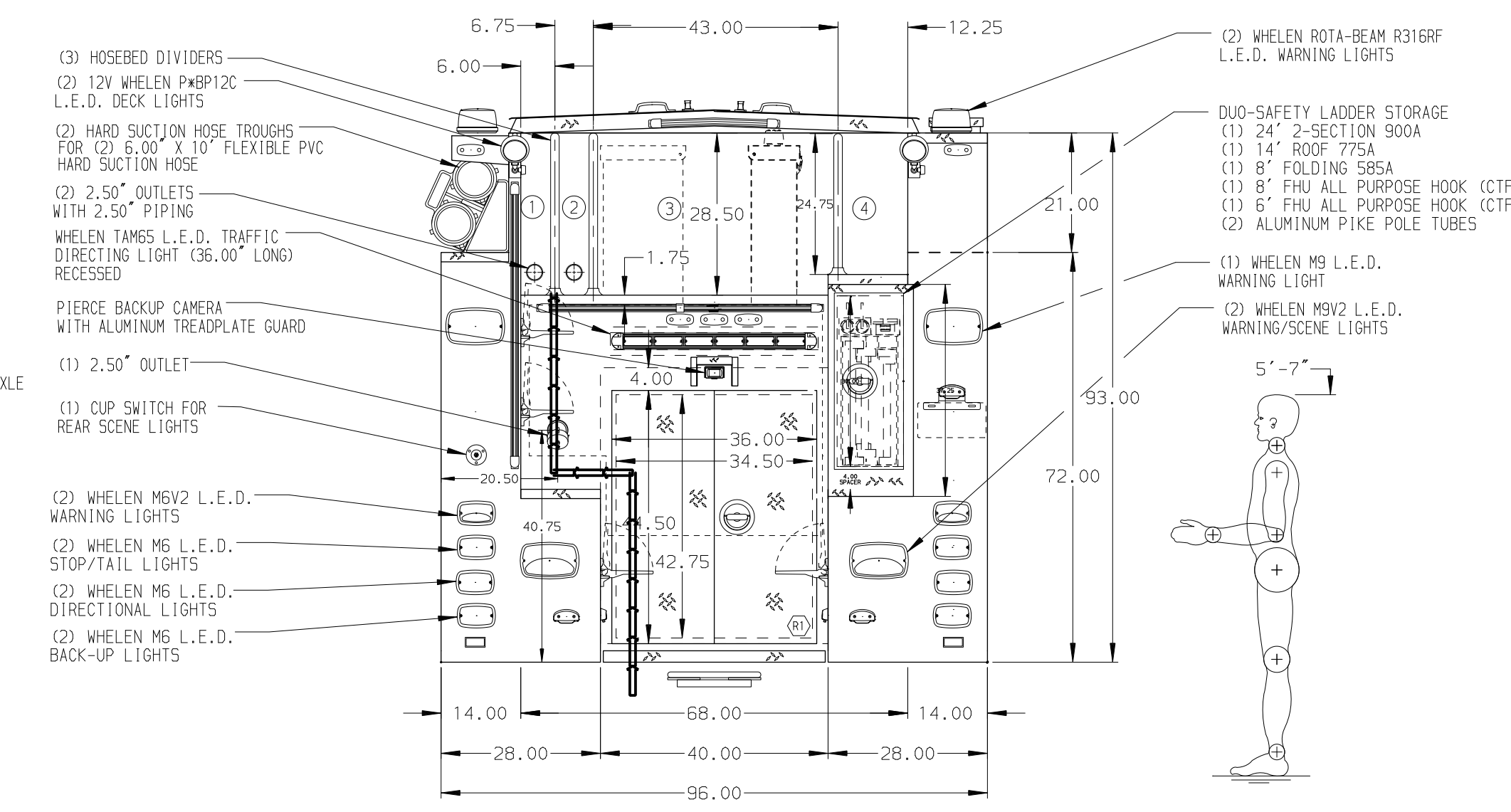


- HOSEBED CAPACITIES**
- ① 300' OF 1.75" HOSE
  - ② 200' OF 2.50" HOSE
  - ③ 1500' OF 5.00" HOSE
  - ④ 300' OF 1.75" HOSE



ALUMINUM BODY

SIDE ROLL AND FRONTAL IMPACT PROTECTION

**NOTE**  
 DIMENSIONS SHOWN ARE APPROXIMATE AND ARE SUBJECT TO MINOR DEVIATIONS AS MAY OCCUR OR BE NECESSARY IN CONSTRUCTION. MINOR DETAILS NOT SHOWN.

1. BATTERY CHARGER LOCATED IN CREW CAB SEAT RISER
2. BATTERY CHARGER INDICATOR LOCATED AT DRIVER'S SIDE STEP AREA
3. SUB-FEED CIRCUIT BREAKER PANEL IN COMPARTMENT L53
4. ONE FULL WIDTH/DEPTH ADJUSTABLE SHELF IN COMPARTMENTS L51, L52, R51 AND R53; THREE IN L53
5. ONE FLOOR MOUNTED SLIDE-OUT TRAY IN COMPARTMENT R51 AND R53
6. PARTITION BETWEEN COMPARTMENTS L51/R51 AND R51/R51
7. AIR INLET WITH DISCONNECT COUPLING IN DRIVER'S SIDE STEP AREA
8. 120V SHORELINE RECEPTACLE LOCATED IN DRIVER'S STEP WELL

REV	DATE	BY	CH	VELOCITY
1	15DEC20	LME	KBO	CHASSIS DATA
2	10NOV20	LME	KBO	MAKE
3	09OCT20	LME	KBO	PIERCE
4	08OCT20	LME	KBO	MODEL
5	11AUG20	LME	CDU	

		JOB NO.	35175
		SCALE	1:24
TITLE 1250-D-810P, 750 GAL OF WATER W/ 60 GAL OF FOAM 161" BODY, LDRS. BTWN TANK & S. SHEET, (3) CROSSLAYS		DATE	
		DRAWN BY	LME
FOR ENFIELD FIRE DISTRICT ENFIELD, CONNECTICUT		CHECKED BY	CDU
		DATE	3AUG20
DWG NO. 35175AD		SHEET SIZE	D
		SHEET NO.	1 OF 1