

**PUMPER
BODY**

Medium Aluminum 2nd Gen Pumper

CHASSIS

Enforcer Chassis

**CHASSIS
AXLE, FRONT, CUSTOM**

18,000 Lb Dana Axle

AXLE, REAR

24,000 Lb Dana Axle

ENGINE

380 HP Cummins L9 Engine

TRANSMISSION

Allison 5th Gen, 3000 EVS P

BUMPER

19" Extended Painted Steel

CAB

6010 Enforcer Cab

**BODY
WATER TANK**

500 Gal/Lon Water Tank

COMPT, PUMPER, REAR

37.75" FF RollUp Rear Compt

COMPT, PUMPER, LEFT SIDE

152" RollUp Full Height Front & Rear FDLR

COMPT, PUMPER, RIGHT SIDE

152" RollUp Full Height Front & Rear FDLR

**FIRE SUPPRESSION
PUMPHOUSE**

45" Control Zone Top Mount

PUMP

1250 GPM Waterous CS

CROSSLAYS, 1.50"

1.50" Crosslays Not Required

CROSSLAYS, 2.50"

2.50" Crosslay Not Required

SPEEDLAYS

(2) 1.50" W/Tray Std. Capacity

GENERATOR

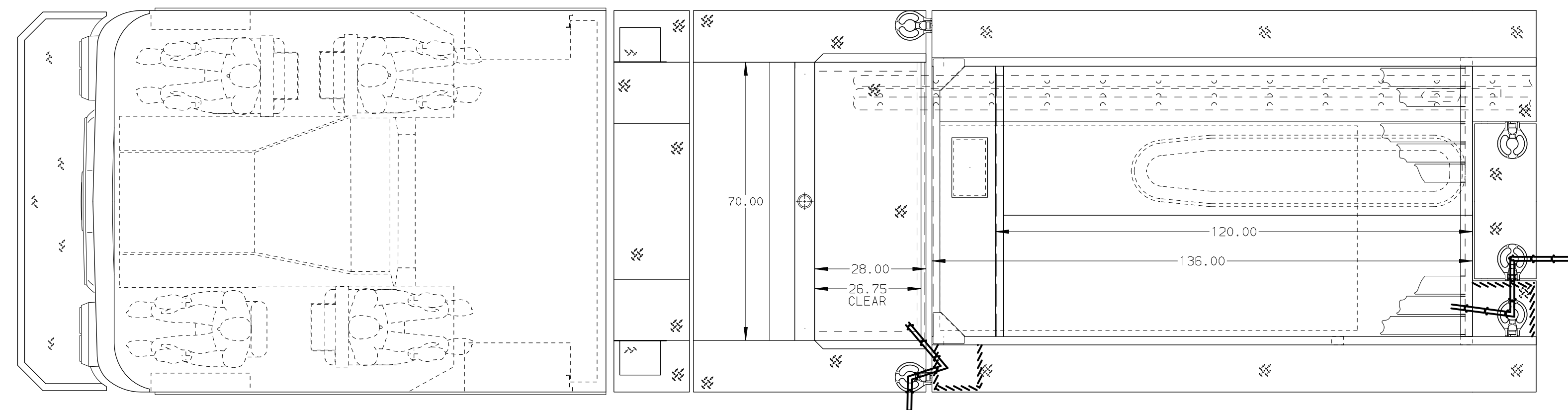
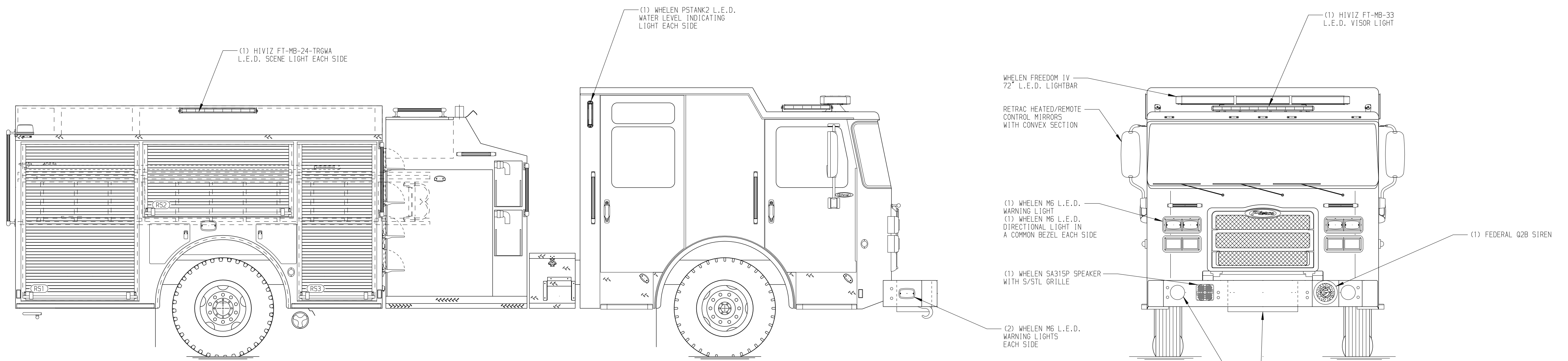
Generator Not Required

Foam System

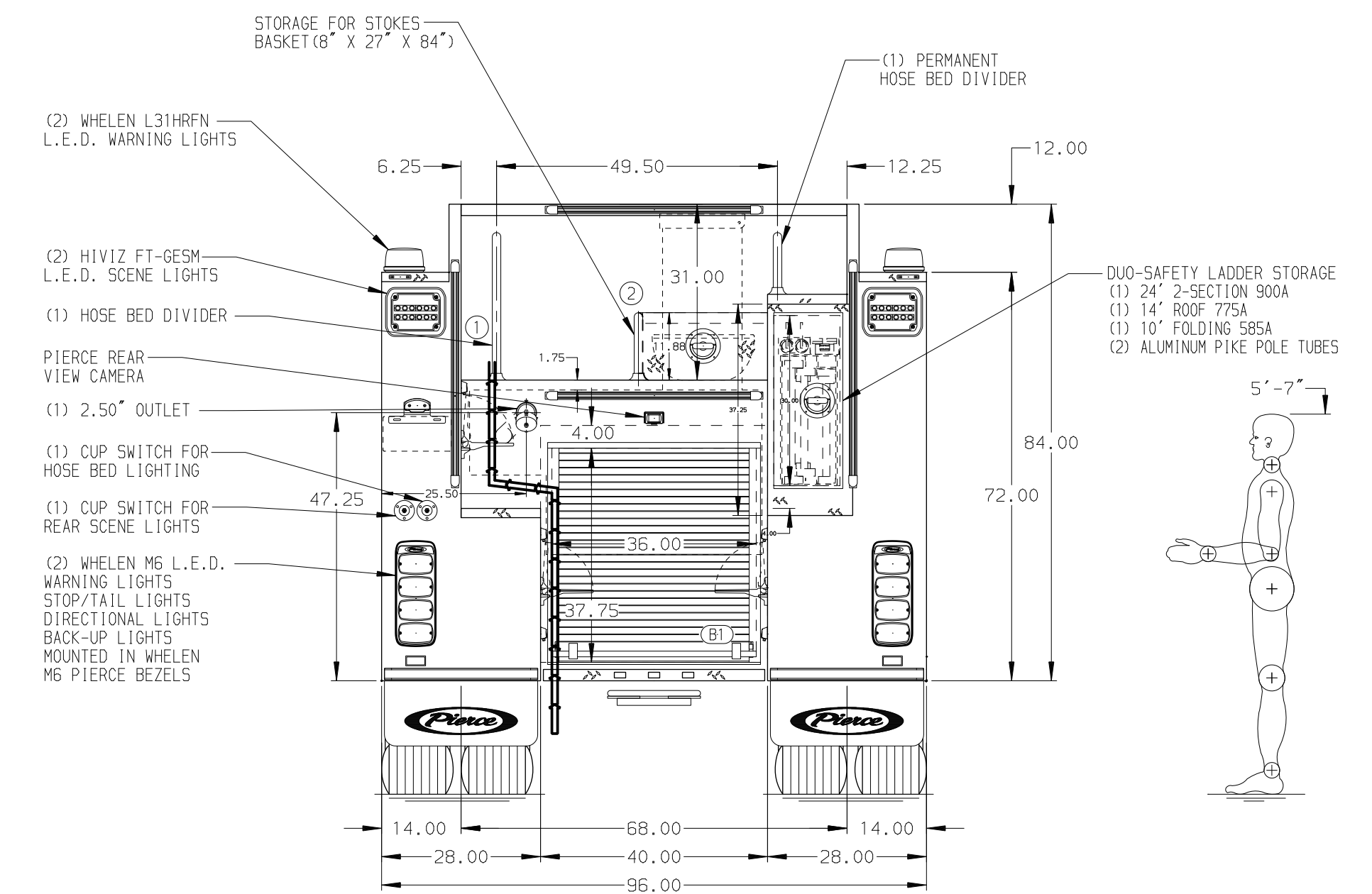
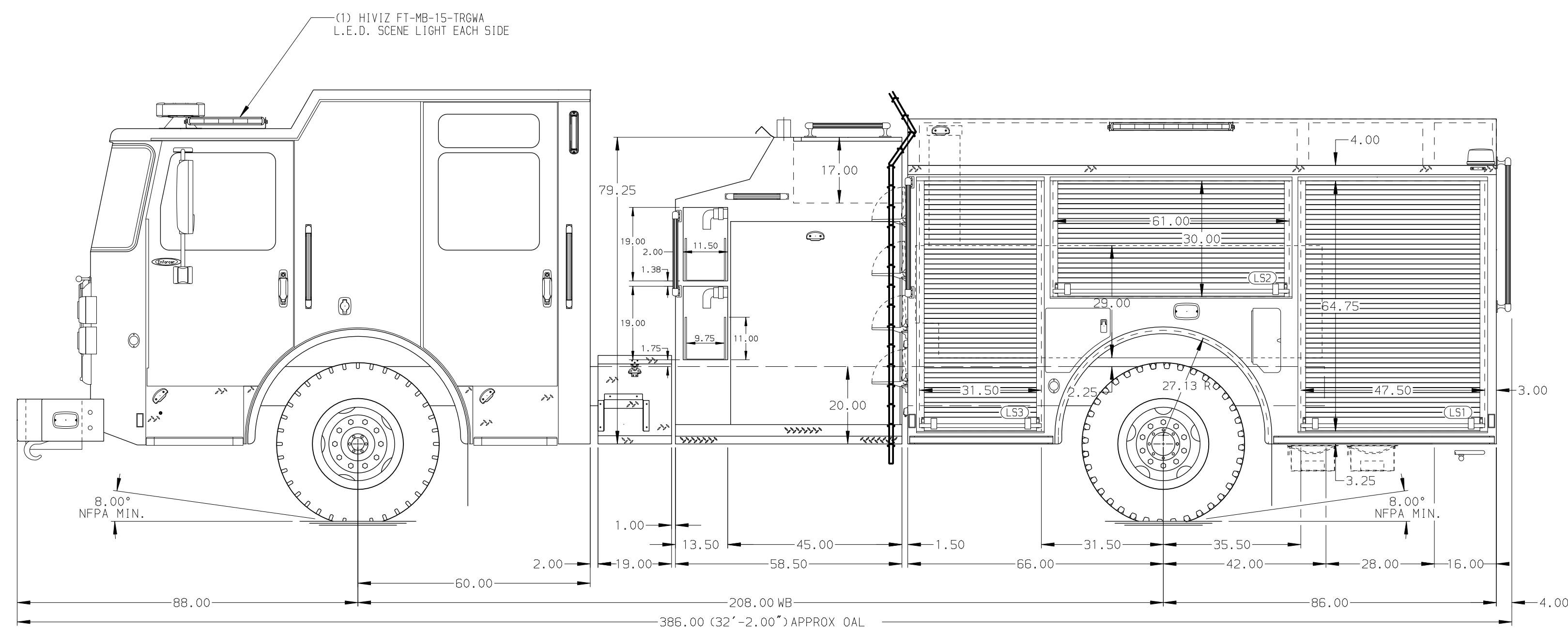
Foam System Not Required

Foam Cell

Foam Cell Not Required



HOSEBED CAPACITY	
BED 1	250' OF 2.50" D.J. POLY HOSE
BED 2	1200' OF 5.00" D.J. POLY HOSE



NOTE
DIMENSIONS SHOWN ARE APPROXIMATE AND ARE SUBJECT TO MINOR DEVIATIONS AS MAY OCCUR OR BE NECESSARY IN CONSTRUCTION. MINOR DETAILS NOT SHOWN.

- ONE 1.50 OUTLET WITH 2.00 PIPING AND SWIVEL LOCATED IN CENTER BUMPER TRAY
- SHORELINE RECEPTACLE WITH KUSSMAUL SUPER AUTO-EJECT LOCATED ON DRIVER'S SIDE OF THE CAB
- AIR INLET WITH DISCONNECT COUPLING IN THE DRIVER'S SIDE STEP WELL
- BATTERY CHARGER LOCATED IN COMPARTMENT PER SHOP ORDER
- BATTERY CHARGE INDICATOR LOCATED ON THE DRIVER SIDE SEAT RISER
- EIGHT ADJUSTABLE SHELVES LOCATED PER SHOP ORDER
- ONE FLOOR MOUNTED SLIDE-OUT TRAY LOCATED PER SHOP ORDER
- ONE SWING-OUT TOOLBOARD LOCATED PER SHOP ORDER
- ONE FOUR DRAWER ASSEMBLY LOCATED PER SHOP ORDER

REV	DATE	BY	CH	ENFORCER
16NOV20	COL	CSH	MAKE	CHASSIS DATA
21AUG20	MMF	CSH	PIERCE	FOR
28JUL20	COL	CSH	MODEL	DWG NO.

		JOB NO.	35173
		SCALE	DATE
TITLE Pierce Pumper Approval Drawing		DRAWN BY	COL
FOR Hattiesburg Fire Department		CHECKED BY	NPE
DWG NO. 35173AD		SHEET SIZE	D
		SHEET NO.	1 OF 1