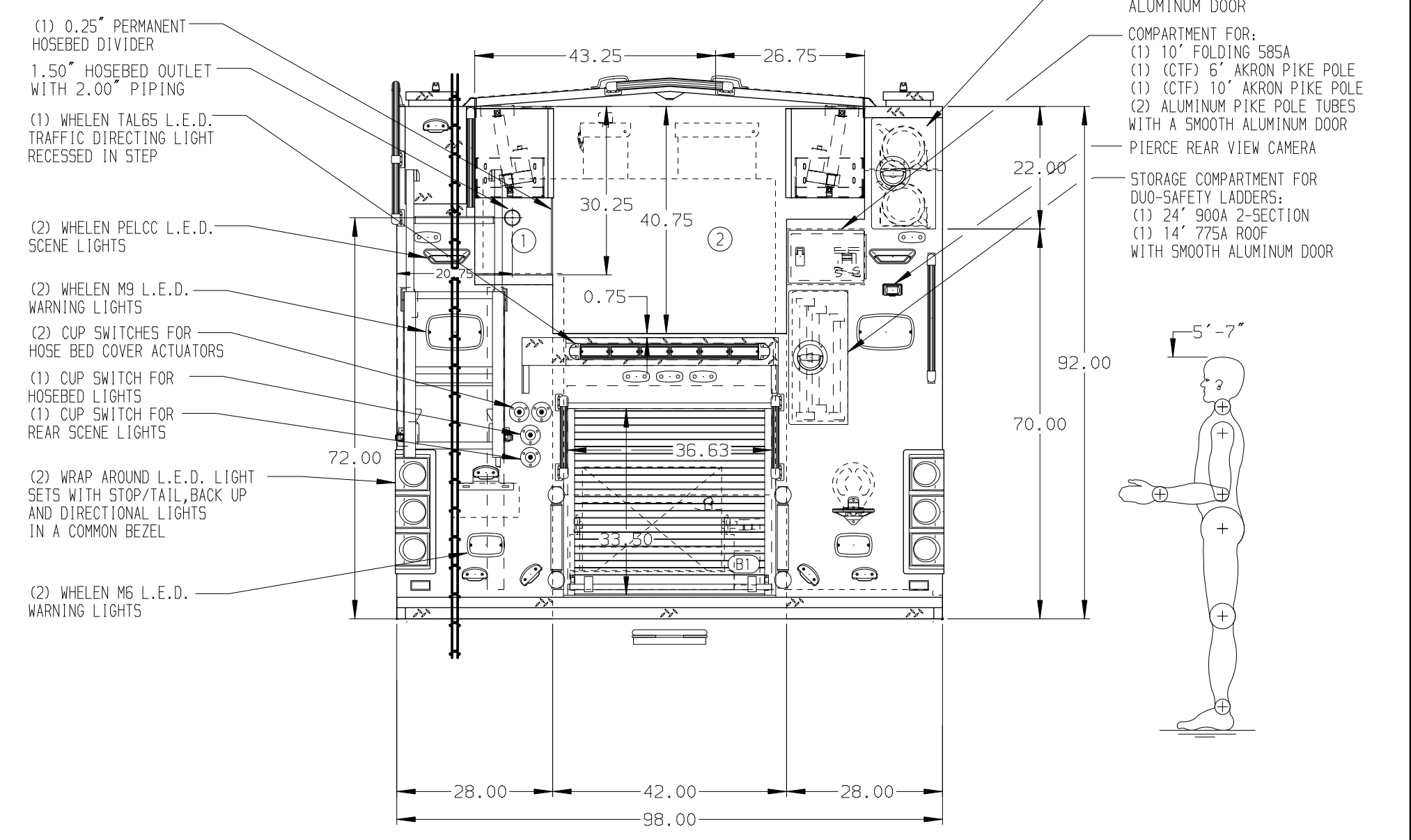
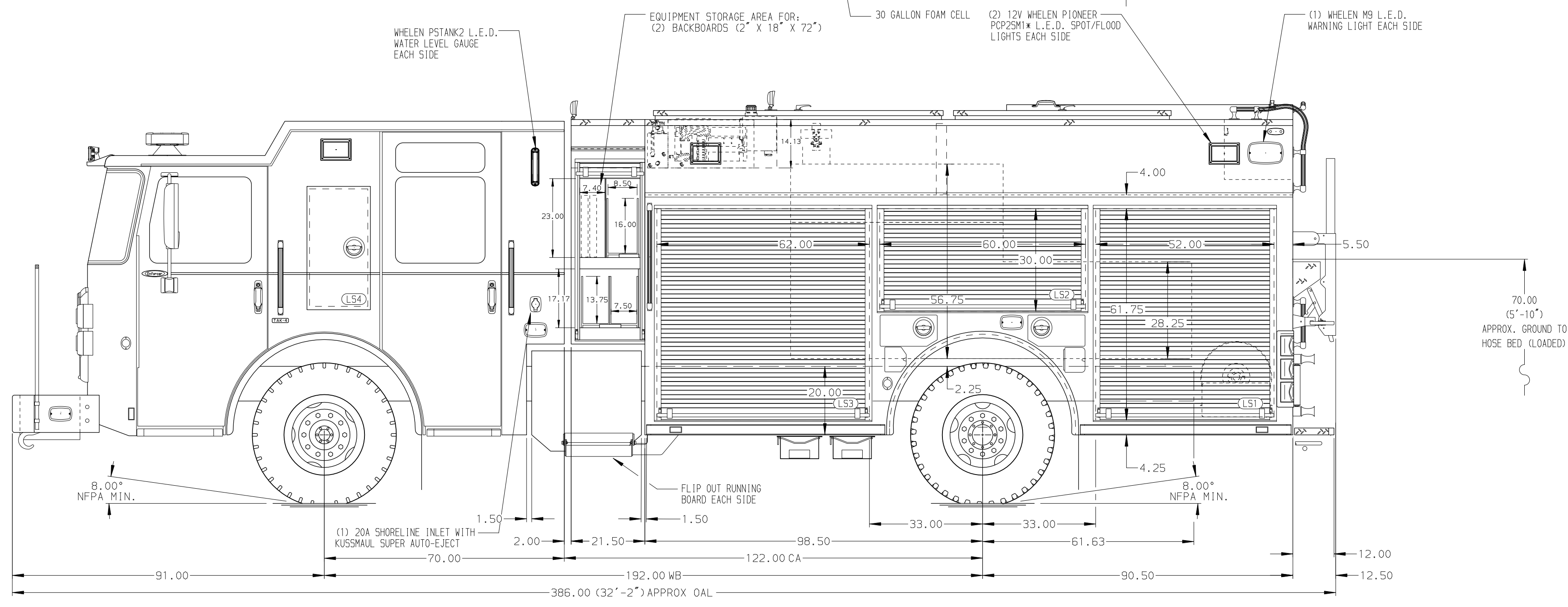


HOSEBED CAPACITIES
 ① 400' OF 3.00" D.J. HOSE
 ② 1500' OF 4.00" D.J. HOSE



ALUMINUM BODY

SIDE ROLL AND FRONTAL IMPACT PROTECTION

NOTE
 DIMENSIONS SHOWN ARE APPROXIMATE AND ARE SUBJECT TO MINOR DEVIATIONS AS MAY OCCUR OR BE NECESSARY IN CONSTRUCTION. MINOR DETAILS NOT SHOWN.

1. QNSPOT AUTOMATIC TIRE CHAINS TO BE PROVIDED AT REAR
2. KUSSMAUL PUMP PLUS 1200 BATTERY CHARGER/AIR COMPRESSOR LOCATED BEHIND DRIVER'S SEAT
3. FOUR WHELEN 01-060069-00 12V L.E.D. LIGHTS LOCATED IN THE HOSE BED
4. ONE PAINTED FULL WIDTH/DEPTH ADJUSTABLE SHELF IN COMPARTMENTS LS1, LS3, RS1, RS2 AND RS3
5. ONE PAINTED FLOOR MOUNTED SLIDE-OUT TRAY WITH 2" SIDES IN COMPARTMENTS LS1, RS1 & RS3
6. ONE SWING-OUT TOOLBOARD WITH PAC TRAC LOCATED IN COMPARTMENT LS2
7. CTECH 3-DRAWER ASSEMBLY IN COMPARTMENT LS3
8. CIRCUIT BREAKER PANEL IN COMPARTMENT LS3
9. ONE HANNAY ELECTRIC CABLE REEL 1618-17-18 LOCATED IN HATCH ABOVE RS3 WITH 200' OF 10/3 CABLE
10. ONE HANNAY ELECTRIC REWIND BOOSTER REEL SBEP32-21-22-8 LOCATED IN COMPARTMENT B1
11. ONE 20A, 120V DUPLEX RECEPTACLE LOCATED IN COMPARTMENTS RS1 AND RS3
12. DUST FILTER FOR LOUVERS IN COMPARTMENT B1
13. PAC TRAC ON BACK WALL IN COMPARTMENT LS2
14. BATTERY CHARGER INDICATOR LOCATED ON THE O5 SEAT RISER
15. ONE TOOLBOARD WITH PEG BOARD ADDED TO SLIDE-OUT TRAY IN COMPARTMENT RS3

REV	DATE	BY	CH	ENFORCER
24NOV20	JWO	CW1		CHASSIS DATA
23OCT20	LME	CW1		MAKE
23SEP20	LME	CW1		PIERCE
07AUG20	LME	NPE		MODEL

		JOB NO.	35166
		SCALE	DATE
TITLE	1500-D-780P, 750G WATER W/30G FOAM CELL, 189" PUC (3) XLAYS, LADDERS THRU BODY, DELUGE, GENERATOR	DRAWN BY	LME
FOR	CLAREMORE FIRE DEPARTMENT CLAREMORE, OKLAHOMA	CHECKED BY	NPE
DWG NO.	35166AD	SHEET SIZE	SHEET NO.
		D	1 OF 1