

PASSENGER'S SIDE COMPARTMENTS
CONTAIN THE FOLLOWING:

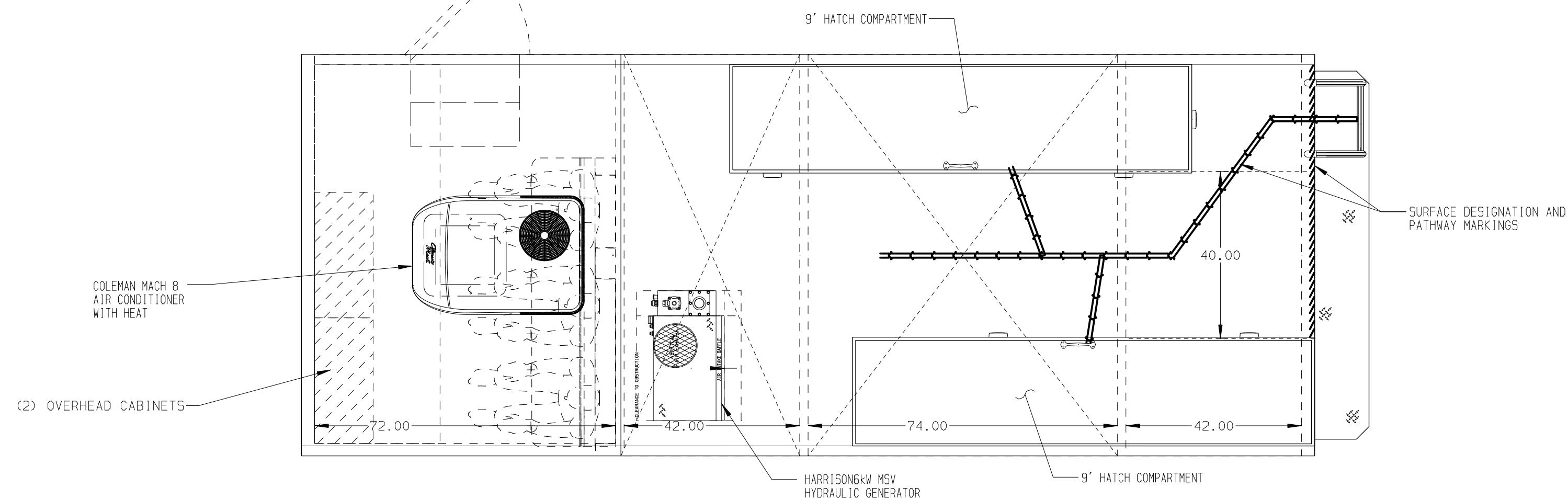
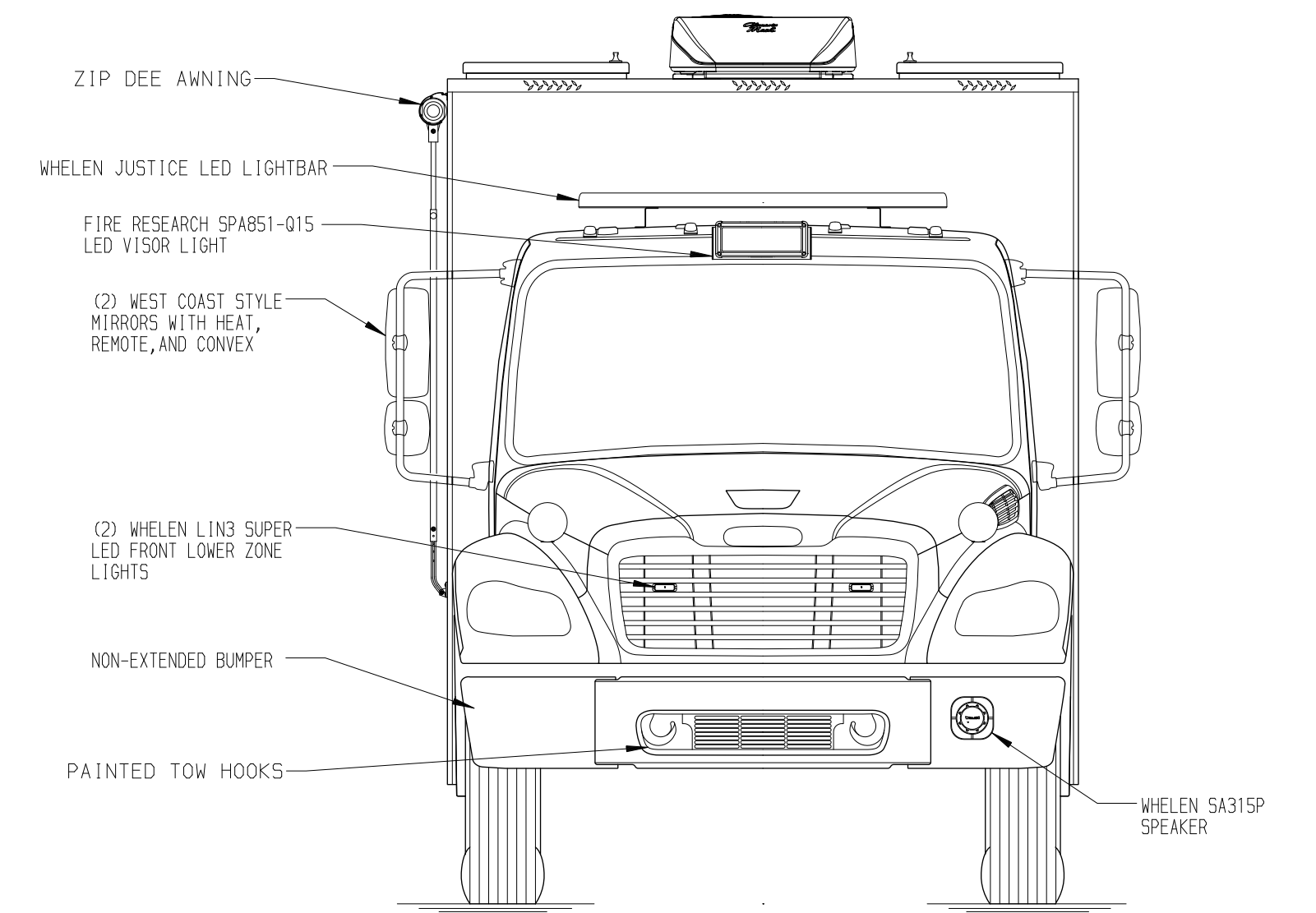
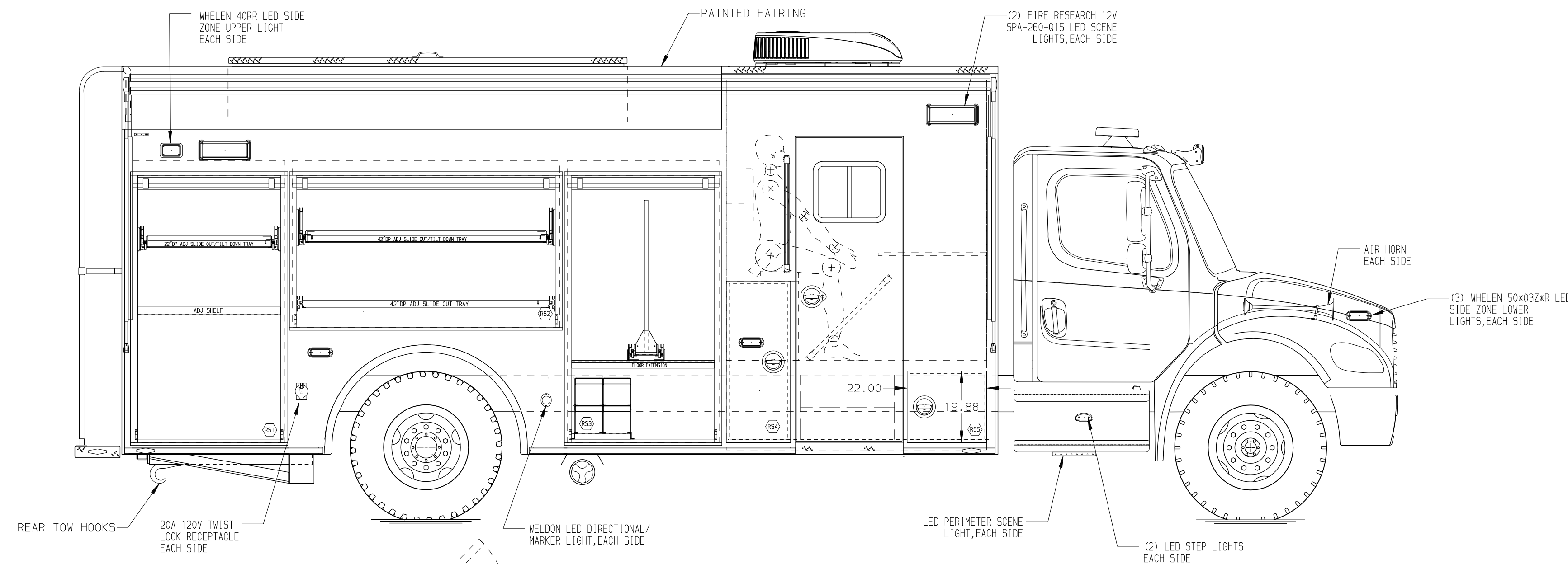
- COMPARTMENT R51 CONTAINS:
 - (1) 22" DP ADJ SHELF
 - (1) 22" DP ADJ SLIDE OUT/TILT TRAY

- COMPARTMENT R52 CONTAINS:
 - (1) 42" DP ADJ SLIDE OUT TRAY

- COMPARTMENT R53 CONTAINS:
 - (1) 4 BOTTLE SCBA RACK
 - (1) HORIZONTAL FLOOR EXTENSION
 - (1) 42" DP ADJ SLIDE OUT TOOLBOARD

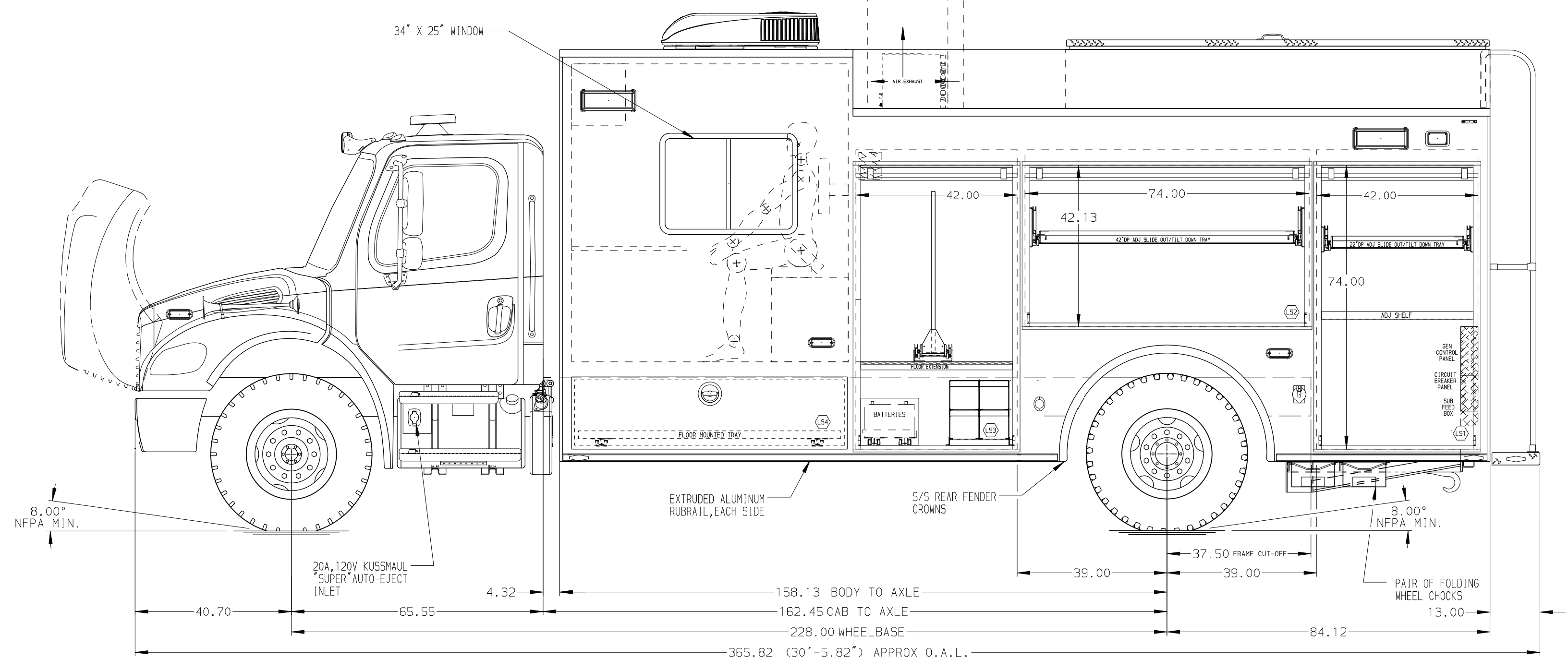
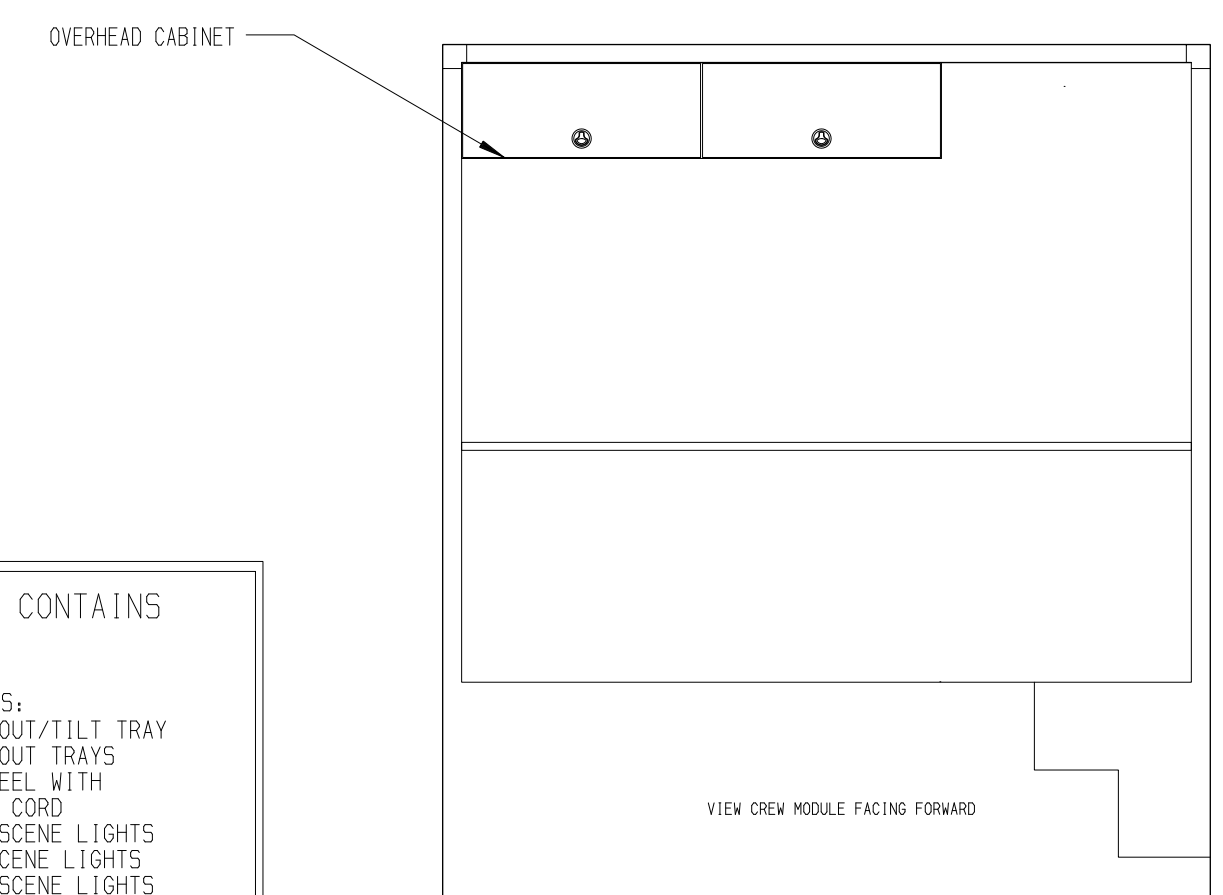
- COMPARTMENT R54 CONTAINS:
 -

- COMPARTMENT R55 CONTAINS:
 -



REAR COMPARTMENT CONTAINS THE FOLLOWING:

COMPARTMENT B1 CONTAINS:
 - (1) 38" DP ADJ SLIDE OUT/TILT TRAY
 - (2) 38" DP ADJ SLIDE OUT TRAYS
 - (1) ELECTRIC CABLE REEL WITH 200' 12/3 YELLOW CORD
 - (1) SWITCH FOR REAR SCENE LIGHTS
 - (1) SWITCH FOR D.S SCENE LIGHTS
 - (1) SWITCH FOR P.S. SCENE LIGHTS



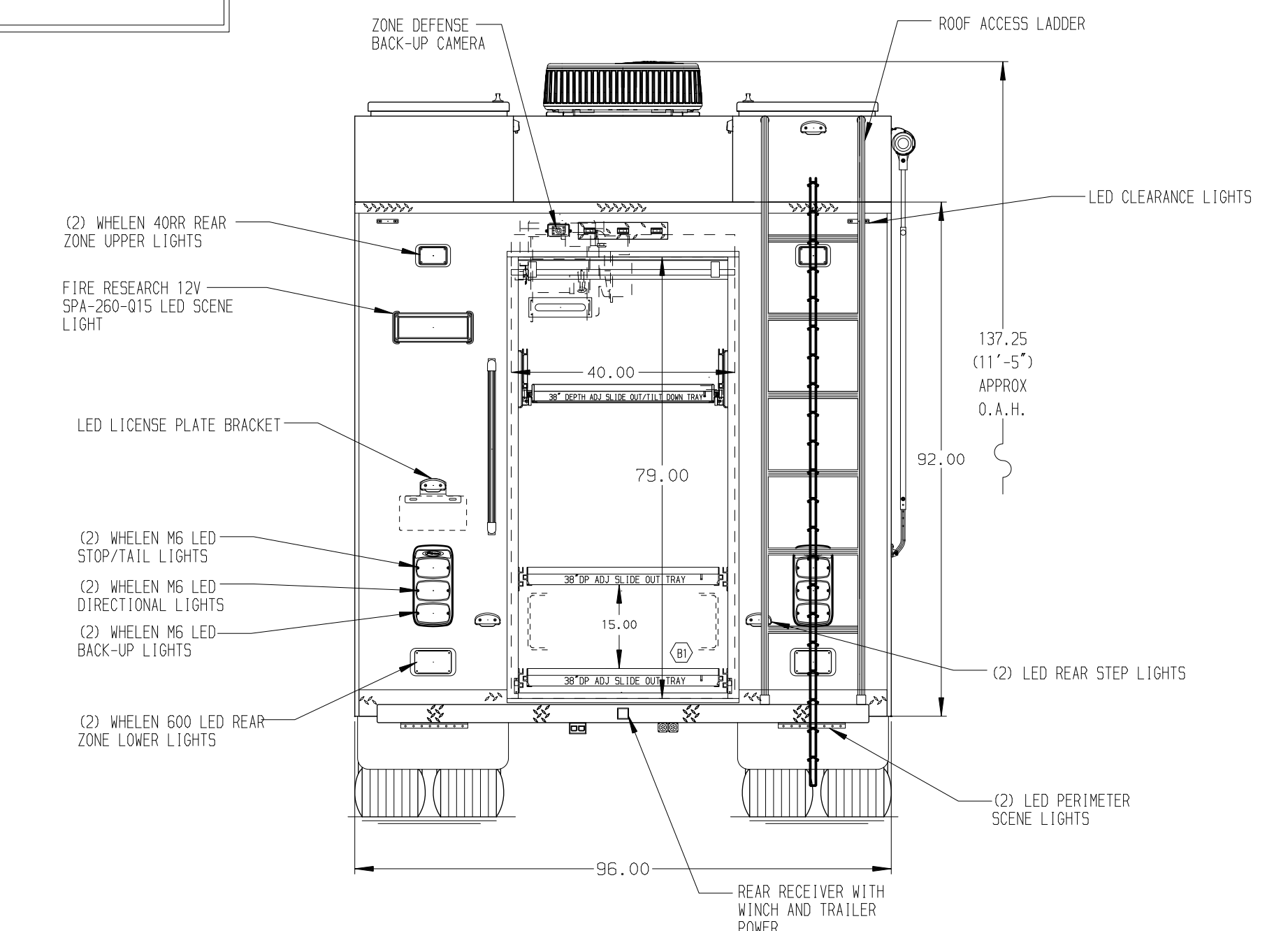
DRIVER'S SIDE COMPARTMENTS CONTAIN THE FOLLOWING:

COMPARTMENT LS1 CONTAINS:
 - (1) 22" DP ADJ SHELF
 - (1) 22" DP ADJ SLIDE OUT/TILT TRAY
 - (1) CIRCUIT BREAKER PANEL
 - (1) GENERATOR METER PANEL
 - (1) SUB FEED BOX

COMPARTMENT LS2 CONTAINS:
 - (1) 42" DP ADJ SLIDE OUT/TILT TRAY

COMPARTMENT LS3 CONTAINS:
 - (1) 4 BOTTLE SCBA RACK
 - (1) BATTERY ENCLOSURE
 - (1) HORIZONTAL FLOOR EXTENSION
 - (1) 42" DP ADJ SLIDE OUT TOOLBOARD

COMPARTMENT LS4 CONTAINS:
 - (1) FLOOR MOUNTED SLIDE OUT TRAY



NOTE:
 DIMENSIONS SHOWN ARE APPROXIMATE AND ARE SUBJECT TO MINOR DEVIATIONS AS MAY OCCUR OR BE NECESSARY IN CONSTRUCTION.
 MINOR DETAILS NOT SHOWN.

- NOTES:
 1. KUSSMAUL AIR COMPRESSOR LS3 UPPER
 2. KUSSMAUL CHARGER LS3
 3. PULL STRAPS ON ALL ROLL UP DOORS
 4. LED STRIP LIGHTS EACH SIDE OF ROLL UP DOORS

MAXIMUM O.A.H. 11'-9"

CLEAR DOOR WIDTH KEY										CHASSIS DATA	
AMOR ROLL UP DOORS:	-1 7/8"									TITLE	ENCORE RESCUE VEHICLE
CORTITE ROLL UP DOORS:	-2 3/4"									FOR	CMD. 42. 74. 42
PIERCE DOUBLE LAP DOORS:	-4 1/4"									CHECKED BY	18SEP20
PIERCE LIFT-UP LAP DOORS:	-1 1/2"									SHEET SIZE	SHEET NO.
(EX: 60" F-F - 1 7/8" = 58 1/8" CLEAR)										DWG NO.	1 OF 1
(F-F) = FRAME TO FRAME											

Pierce MANUFACTURING INC.

JOB NO. 35148
 SCALE 1:24 DATE
 DRAWN BY JSW 26AUG20
 CHECKED BY CDK 18SEP20
 SHEET SIZE D SHEET NO. 1 OF 1

ENCORE RESCUE VEHICLE
 CMD. 42. 74. 42
 TOWN OF SOUTHAMPTON

DWG NO. 35148AD