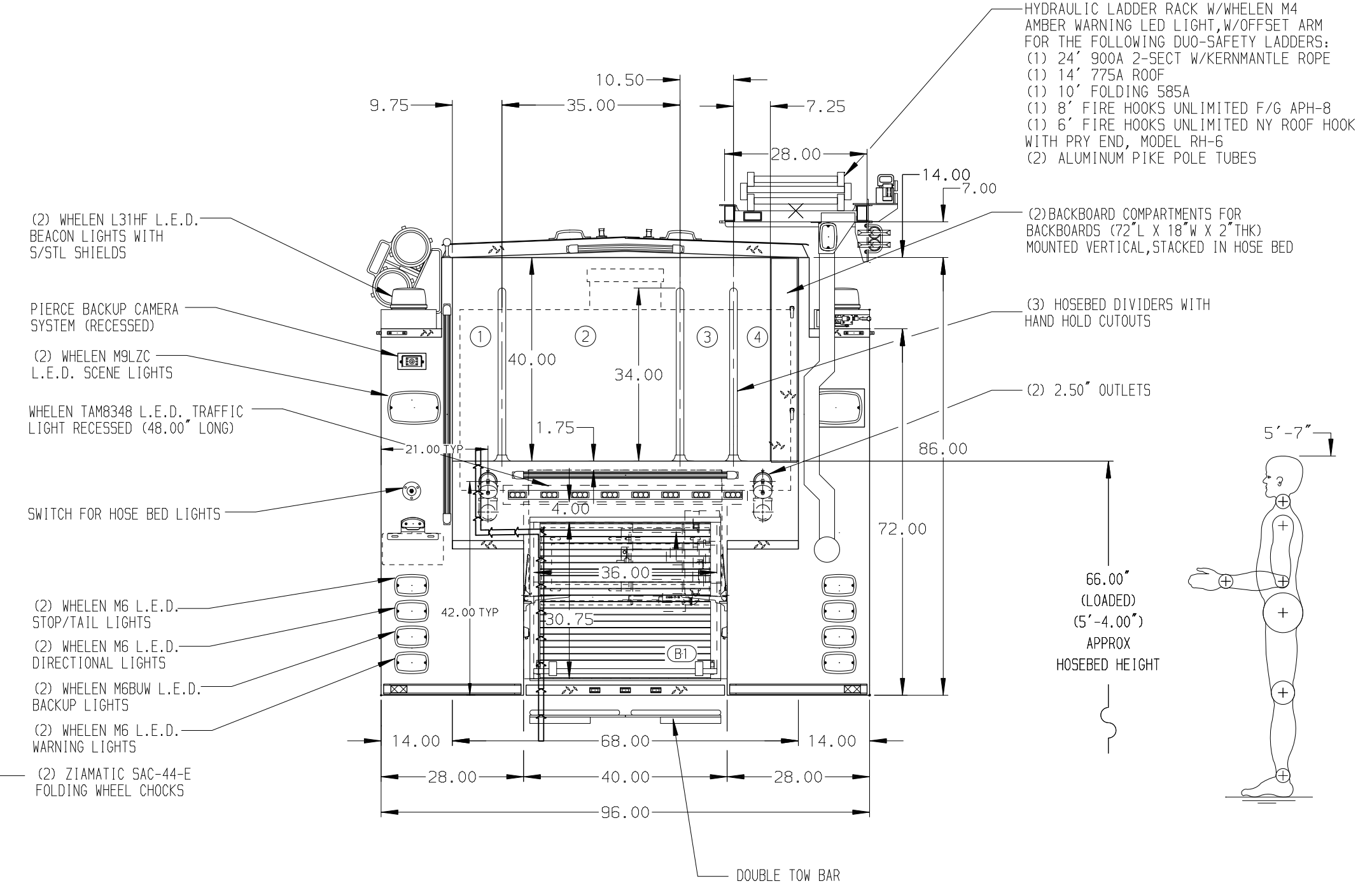
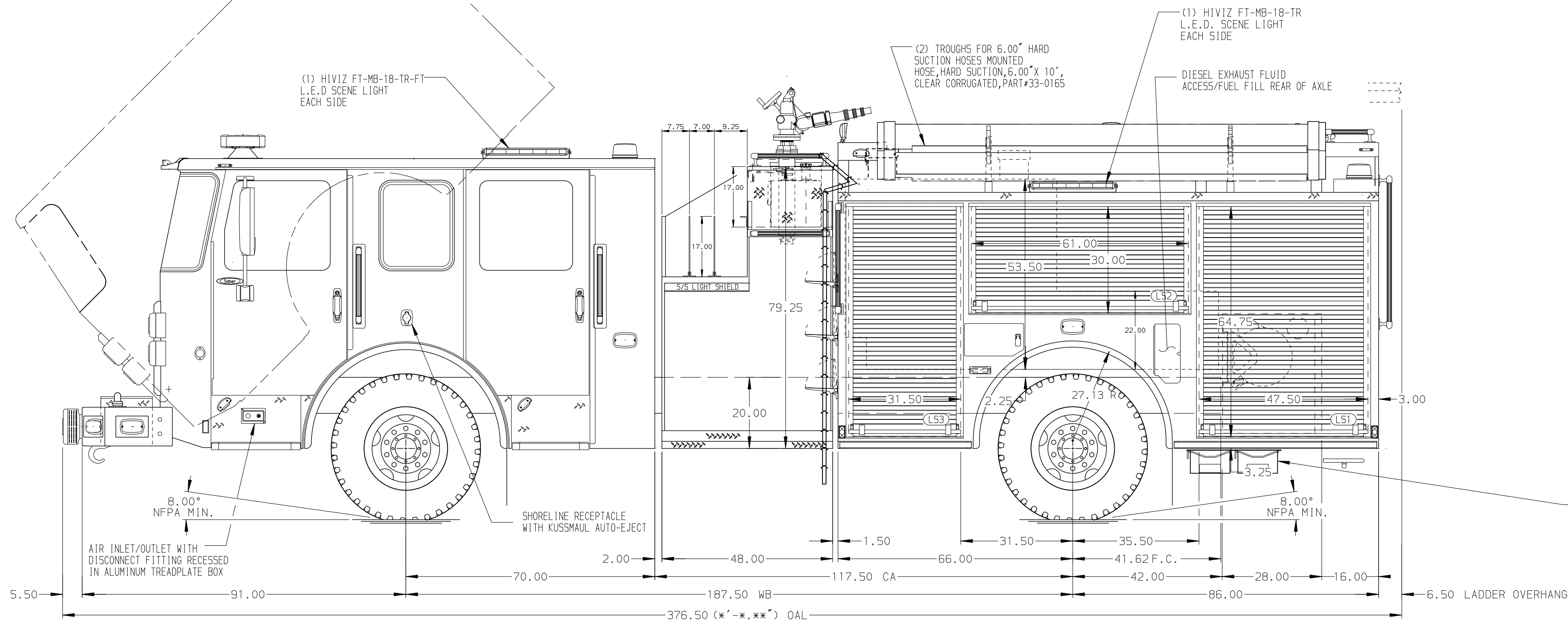


HOSEBED CAPACITIES

- ① 300' OF 2.50" HOSE
- ② 1000' OF 5.00" HOSE
- ③ 300' OF 2.50" HOSE
- ④ 400' OF 1.75" HOSE



ALUMINUM BODY MAXIMUM O.A.L. 375.00" MAXIMUM O.A.H. 128.00"

NOTE
DIMENSIONS SHOWN ARE APPROXIMATE AND ARE SUBJECT TO MINOR DEVIATIONS AS MAY OCCUR OR BE NECESSARY IN CONSTRUCTION. MINOR DETAILS NOT SHOWN.

1. BATTERY CHARGER LOCATED BEHIND DRIVER SEAT
2. BATTERY CHARGE INDICATOR LOCATED ON DRIVER'S SEAT RISER
3. ELASTIC PULL STRAP FOR DOOR ON ALL SIDE COMPARTMENT ROLL UP DOORS
4. DRIP PAN GUARD FOR ROLL-UP DOOR LOCATED ON ALL BODY COMPARTMENT DOORS
5. ONE FULL WIDTH/DEPTH ADJUSTABLE SHELF IN COMPARTMENT L51, L52, L53, R51, R52, & R53
6. PAC TRAC ON THE REAR WALL OF COMPARTMENT L51, L52, L53, R51, R52 & R53
7. CIRCUIT BREAKER PANEL IN COMPARTMENT L53
8. ONE HANNAY ELECTRIC REWIND CORD REEL MODEL 1618-17-18 LOCATED IN B1 WITH 200' OF 10/3 CABLE
9. TRIDENT FOAMMATE 2.1 FOAM SYSTEM
10. JUNCTION HOLDER BOX MOUNTED AT PICK-UP
11. 120V RECEPTACLE STRIP LOCATED IN THE EMS COMPARTMENT

		JOB NO.	35119
		SCALE	DATE
TITLE 1250-D-800P, 750 WATER W/50G FOAM CELL, 152" BODY (3) XLAYS, HYD LADDER RACK RS, GENERATOR, DELUGE		DRAWN BY	05JUN20
FOR UNITED STATES NAVY PIERCE DIRECT		CHECKED BY	8JUN20
DWG NO. 35119AD		SHEET SIZE	SHEET NO.
		D	1 OF 1

02OCT20	LME	CW1	MAKE
09SEP20	LME	CW1	PIERCE
15JUN20	LME	EGO	MODEL
REV	DATE	BY	CH
			SABER FR