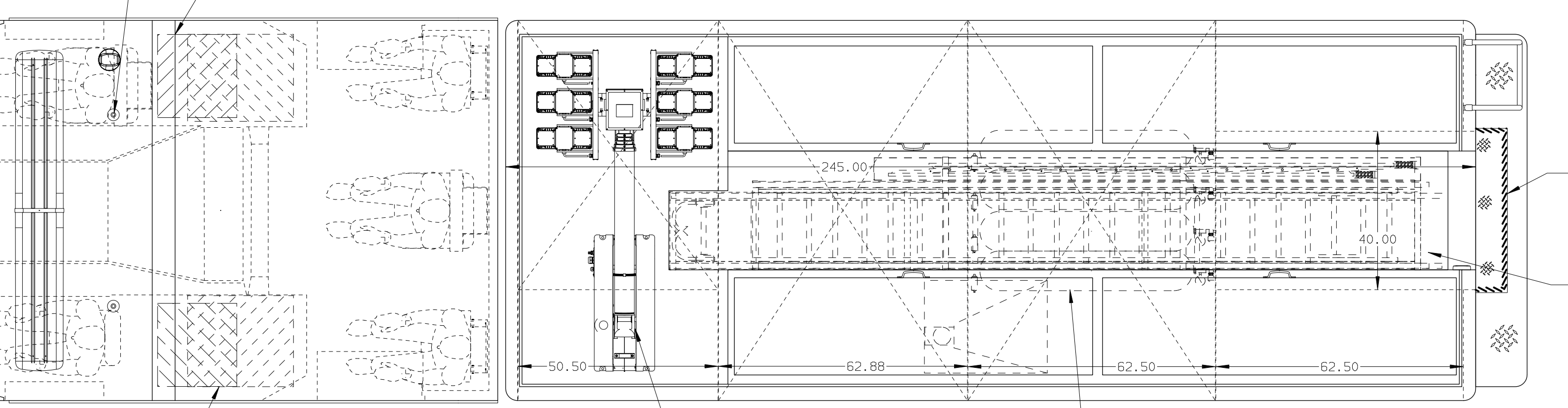
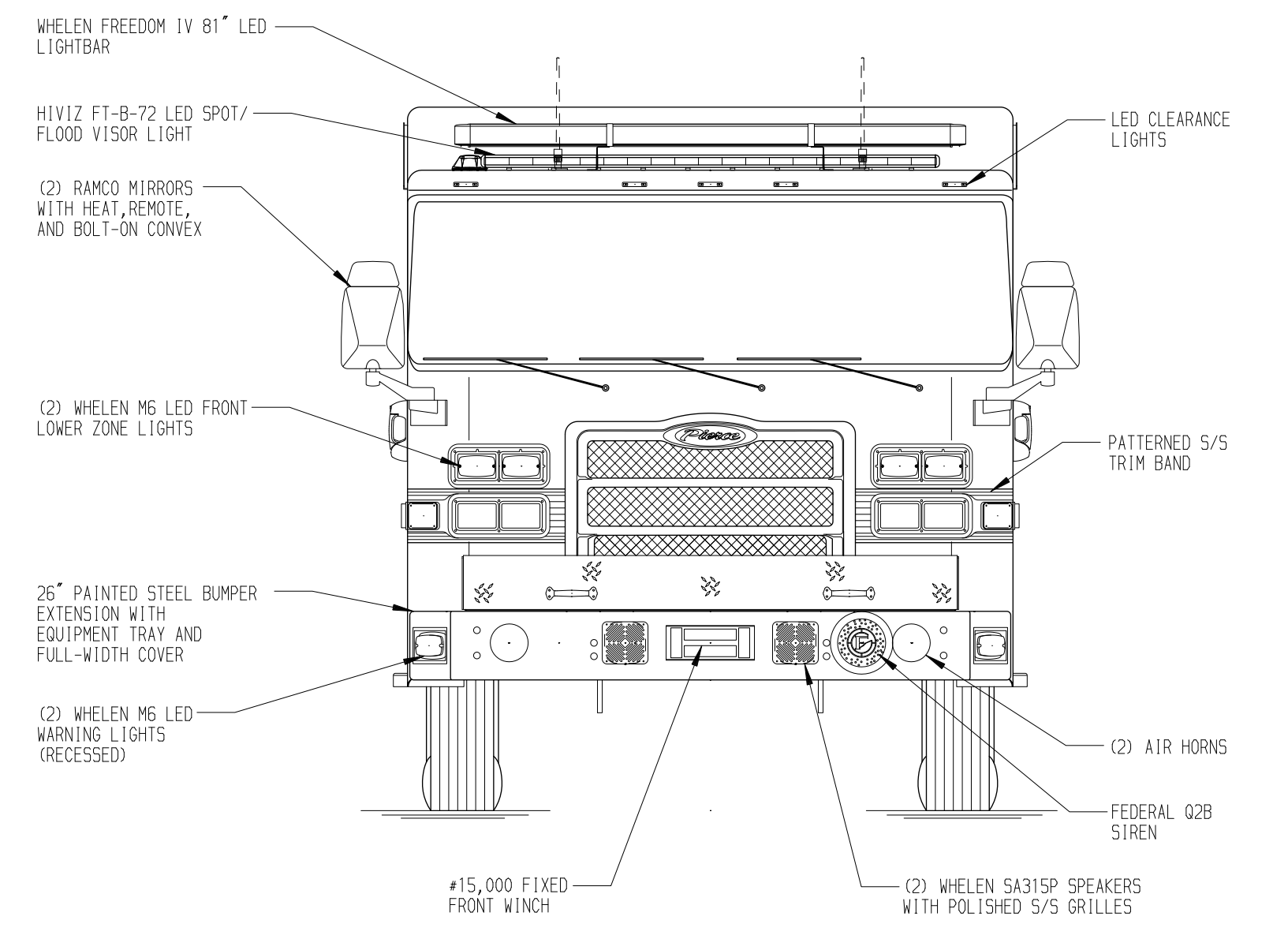
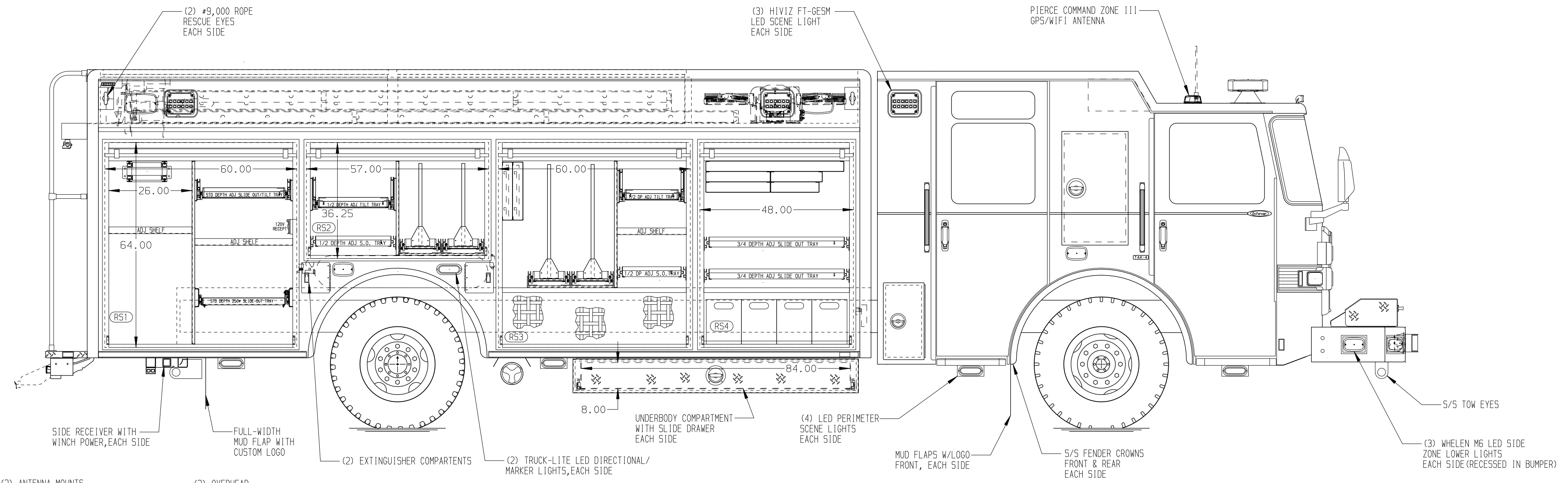
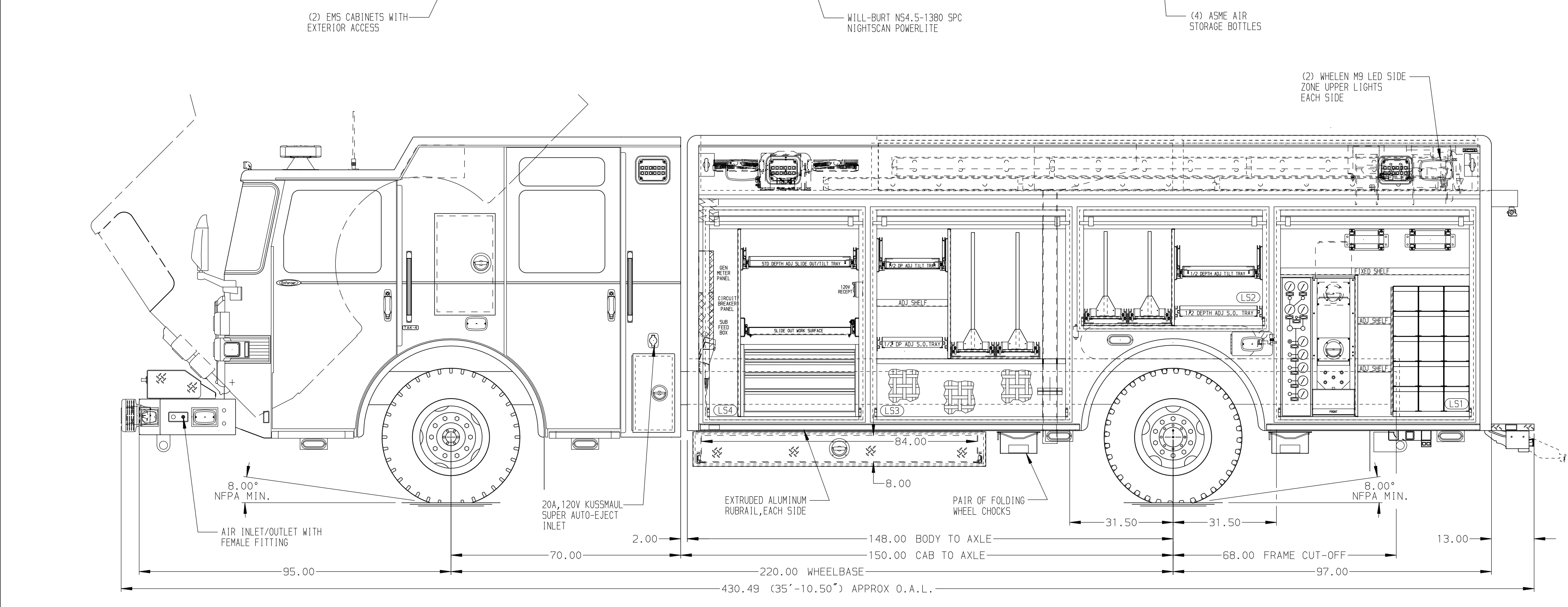


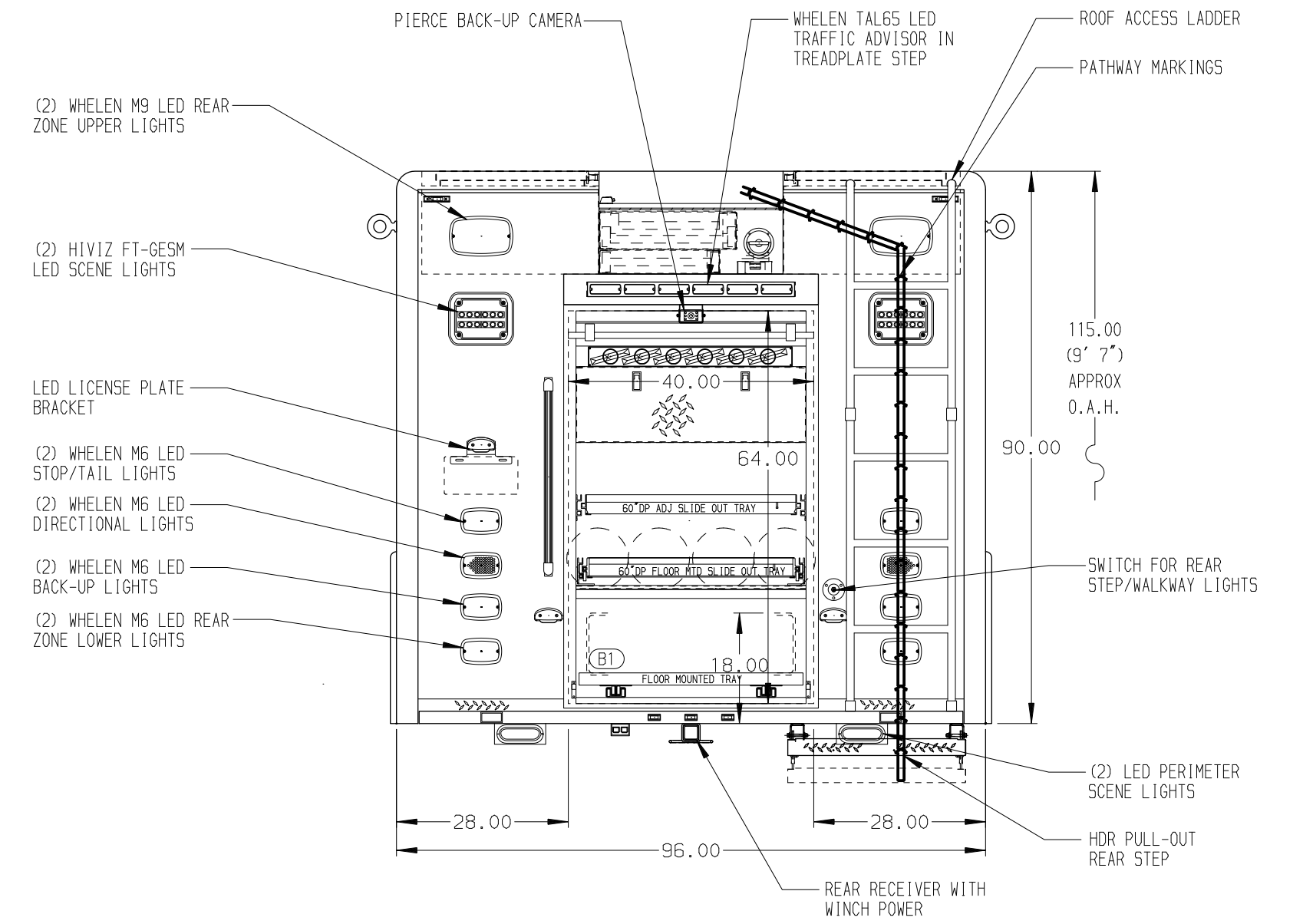
- RIGHT SIDE COMPARTMENTS CONTAIN THE FOLLOWING:**
- COMPARTMENT RS1 CONTAINS:
    - (2) STANDARD DEPTH ADJ SHELVES
    - (1) STD DEPTH ADJ SLIDE OUT TRAY
    - (1) STD DEPTH ADJ SLIDE OUT/TILT TRAY
    - (1) 15A, 120V DUPLEX RECEPTACLE
    - (1) VERTICAL COMPARTMENT DIVIDER
    - (1) ELECTRIC CORD REEL WITH 200' OF 10/3 YELLOW CORD
  - COMPARTMENT RS2 CONTAINS:
    - (1) 1/2 DEPTH ADJ SLIDE OUT TRAY
    - (1) 1/2 DEPTH ADJ SLIDE OUT/TILT TRAY
    - (2) 2-WAY FLOOR MTD SLIDE OUT TRAY WITH TOOLBOARDS
    - (1) TRANSVERSE VERTICAL DIVIDER
  - COMPARTMENT RS3 CONTAINS:
    - (1) HORIZONTAL FLOOR EXTENSION
    - CARGO RETENTION NETTING
    - (1) RACK FOR 2 BACKBOARDS
    - (1) 1/2 DEPTH ADJ SHELF
    - (1) 1/2 DEPTH ADJ SLIDE OUT TRAY
    - (1) 1/2 DEPTH ADJ SLIDE OUT/TILT TRAY
    - (2) 2-WAY FLOOR MTD SLIDE OUT TRAYS WITH TOOLBOARDS
    - (1) TRANSVERSE VERTICAL DIVIDER
  - COMPARTMENT RS4 CONTAINS:
    - (1) CAB LIFT CONTROLLER
    - (1) HORIZONTAL FLOOR EXTENSION
    - (1) RACK FOR 5 AIR BAGS
    - (2) 3/4 DEPTH ADJ SLIDE OUT TRAYS
    - (4) POLY TOOL BOXES



- REAR COMPARTMENT CONTAINS THE FOLLOWING:**
- COMPARTMENT B1 CONTAINS:
    - (1) RACK FOR 6 PIKE POLES
    - (1) HORIZONTAL FLOOR EXTENSION
    - (1) STORAGE COMPARTMENT FOR LUMBER
    - (1) 60\"/>



- LEFT SIDE COMPARTMENTS CONTAIN THE FOLLOWING:**
- COMPARTMENT LS1 CONTAINS:
    - (1) RACK FOR 15 SCBA BOTTLES
    - (2) STANDARD DEPTH ADJ SHELVES
    - (1) ELECTRIC CORD REEL WITH 200' OF 10/3 YELLOW CORD
    - (1) TOOL AIR REEL WITH 150' OF HOSE
    - (1) CASCADE SYSTEM CONTROL PANEL
    - (1) SPACESAVER 2-BOTTLE FILL ENCLOSURE
    - (1) STANDARD DEPTH FIXED SHELF
    - (1) VERTICAL COMPARTMENT DIVIDER
  - COMPARTMENT LS2 CONTAINS:
    - (1) 1/2 DEPTH ADJ SLIDE OUT TRAY
    - (1) 1/2 DEPTH ADJ SLIDE OUT/TILT TRAY
    - (2) 2-WAY FLOOR MTD SLIDE OUT TRAY WITH TOOLBOARDS
    - (1) TRANSVERSE VERTICAL DIVIDER
  - COMPARTMENT LS3 CONTAINS:
    - (1) HORIZONTAL FLOOR EXTENSION
    - (1) OIL DRY HOPPER
    - CARGO RETENTION NETTING
    - (1) 1/2 DEPTH ADJ SHELF
    - (1) 1/2 DEPTH ADJ SLIDE OUT TRAY
    - (1) 1/2 DEPTH ADJ SLIDE OUT/TILT TRAY
    - (2) 2-WAY FLOOR MTD SLIDE OUT TRAYS WITH TOOLBOARDS
    - (1) TRANSVERSE VERTICAL DIVIDER
  - COMPARTMENT LS4 CONTAINS:
    - (1) IOTA 75 AMP CHARGER
    - (1) SLIDE OUT WORK SURFACE WITH STORAGE
    - (1) STD DEPTH ADJ SLIDE OUT/TILT TRAY
    - (1) 4-DRAWER C-TECH CABINET
    - (1) VERTICAL COMPARTMENT DIVIDER
    - (1) SUB FEED BOX
    - (1) CIRCUIT BREAKER PANEL
    - (1) GENERATOR METER PANEL
    - (1) NIGHTSCAN CONTROLLER
    - (1) 15A, 120V DUPLEX RECEPTACLE



**NOTE**  
DIMENSIONS SHOWN ARE APPROXIMATE AND ARE SUBJECT TO MINOR DEVIATIONS AS MAY OCCUR OR BE NECESSARY IN CONSTRUCTION. MINOR DETAILS NOT SHOWN.

- NOTES:**
- ONAN 25kW SINGLE PHASE PTO DRIVEN GENERATOR LOCATED BETWEEN THE FRAME RAILS
  - KUSSMAUL AIR COMPRESSOR FOR BRAKE SYSTEM LOCATED BEHIND THE DRIVER'S SEAT
  - WARN #9,000 PORTABLE WINCH
  - POLISHED S/5 SCUFFPLATES ON CAB AND CREW CAB DOORS
  - FLOOR IN CAB AND CREW CAB TO BE ALUMINUM TREADPLATE
  - BATTERY CHARGE INDICATOR LOCATED ON DRIVER'S SEAT RISER
  - AMOR LED LIGHTS LOCATED IN ALL BODY AND HATCH COMPARTMENTS

MAXIMUM O.A.H. 9'-7"

SIDE ROLL AND FRONTAL IMPACT PROTECTION

CLEAR DOOR WIDTH KEY						
AMOR ROLL UP DOORS:	-2 1/4"	▽	21DEC20	DHE	AZU	CHASSIS DATA
CORTITE ROLL UP DOORS:	-2 1/2"	▽	04NOV20	DHE	AZU	MAKE
PIERCE DOUBLE LAP DOORS:	-4 1/4"	▽	30OCT20	DHE	AZU	PIERCE
PIERCE LIFT-UP LAP DOORS:	-1 1/2"	▽	08SEP20	DHE	AZU	MODEL
(EX: 60" F-F - 2 1/4" = 57 3/4" CLEAR)			REV	DATE	BY	CH

<b>Pierce MANUFACTURING INC.</b>		JOB NO.	35112
		SCALE	DATE
TITLE		DRAWN BY	27AUG20
		CHECKED BY	27AUG20
FOR		DWG NO.	35112AD
		SHEET NO.	1 OF 1