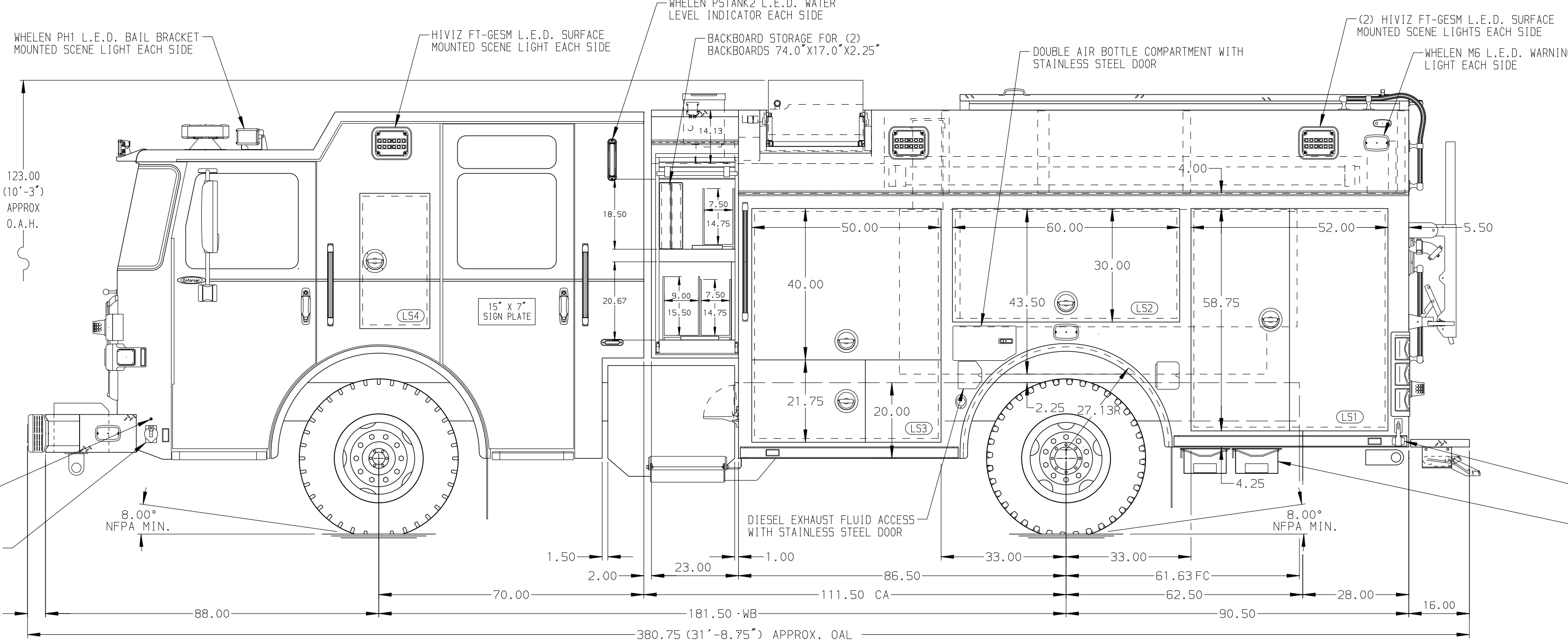


HOSEBED CAPACITIES

① 600' OF 1.75" D.J. POLY HOSE

② 800' OF 2.50" D.J. POLY HOSE

③ 1000' OF 4.00" D.J. POLY HOSE



ALUMINUM BODY      MAXIMUM O.A.H. 134.00"

- NOTE
- DIMENSIONS SHOWN ARE APPROXIMATE AND ARE SUBJECT TO MINOR DEVIATIONS AS MAY OCCUR OR BE NECESSARY IN CONSTRUCTION. MINOR DETAILS NOT SHOWN.
- ONE POLY TRAY SHIPPED LOOSE
  - BATTERY CHARGER LOCATED BEHIND DRIVER SEAT
  - BATTERY CHARGER INDICATOR LOCATED ON DRIVER SIDE SEAT RISER
  - WALKING SURFACE LIGHTS LOCATED IN THE CARGO AREA
  - ONE FULL WIDTH/DEPTH ADJUSTABLE SHELF WITH SIDES IN COMPARTMENT-LS3,RS1,RS2,B1; TWO IN RS3
  - ONE FLOOR MOUNTED FULL WIDTH/DEPTH SLIDE-OUT TRAY WITH SIDES IN COMPARTMENT-B1
  - ONE SWING-OUT TOOLBOARD WITH PEGBOARD PATTERN IN COMPARTMENT-LS2
  - PAC TRAC EQUIPMENT MOUNTING SYSTEM ON THE WALLS IN COMPARTMENT-LS1,LS3,RS1
  - PARTITION BETWEEN COMPARTMENTS LS1/B1 AND RS1/B1
  - PULL STRAPS FOR DOORS IN CROSSLAY COMPARTMENTS
  - TWO 120V DUPLEX RECEPTACLES IN CAB
  - ONE 120V DUPLEX RECEPTACLE IN COMPARTMENT-LS1,LS2,LS3,RS1,RS2; TWO IN RS3

REV	DATE	BY	CH	ENFORCER
1	120CT20	BST	GKH	CHASSIS DATA
2	29SEP20	BST	GKH	MAKE
3	22SEP20	BST	GKH	PIERCE
4	01JUL20	BST	WKL	MODEL

		JOB NO.	35110
		SCALE	DATE
TITLE 1500-D-750P WITH 20 GAL. FOAM CELL, DELUGE 177" PUC PUMPER BODY, LADDERS BETWEEN TANK AND BODY FOR SANDY FIRE DISTRICT #72 SANDY, OR	DRAWN BY	BST	24JUN20
	CHECKED BY	CDU	26JUN20
DWG NO.	35110AD	SHEET SIZE	SHEET NO.
		D	1 OF 1