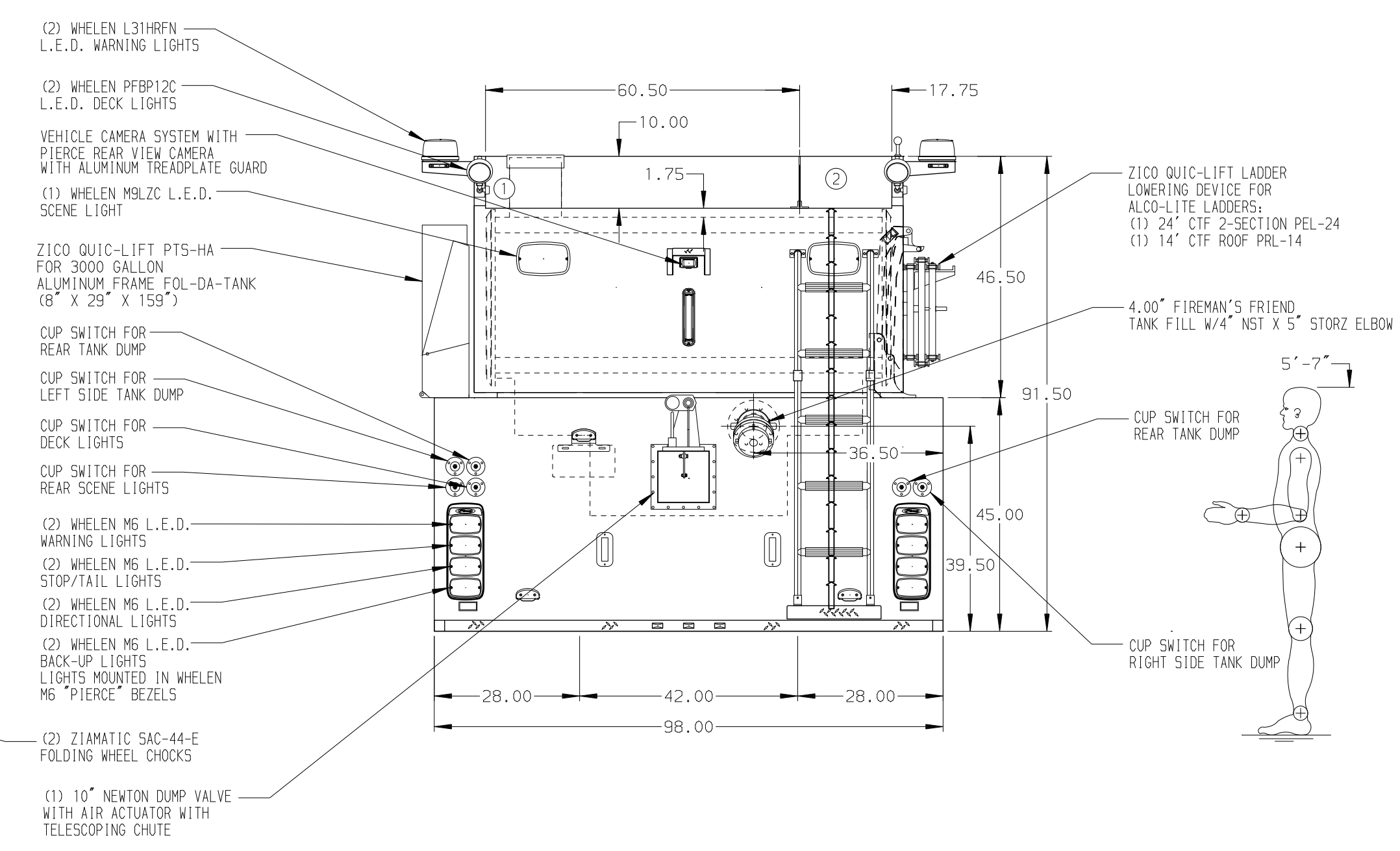
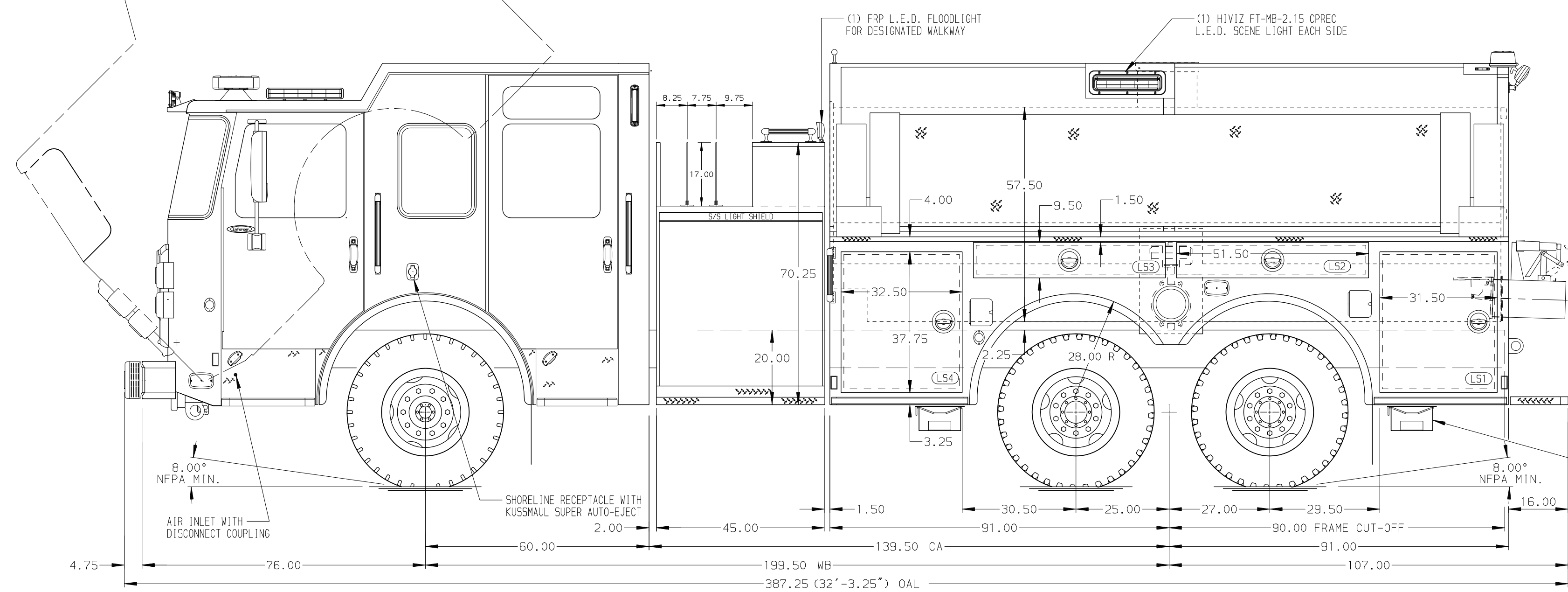


HOSEBED CAPACITIES

① 800' OF 5.00" D.J. HOSE

② 400' OF 3.00" D.J. HOSE



ALUMINUM BODY MAXIMUM O.A.L. 420.00"

NOTE  
DIMENSIONS SHOWN ARE APPROXIMATE AND ARE SUBJECT TO MINOR DEVIATIONS AS MAY OCCUR OR BE NECESSARY IN CONSTRUCTION. MINOR DETAILS NOT SHOWN.

- BATTERY CHARGER LOCATED IN COMPARTMENT L54
- BATTERY CHARGER INDICATOR LOCATED ON DRIVER'S SEAT RISER
- ONE FULL WIDTH/DEPTH ADJUSTABLE SHELF IN COMPARTMENTS L54, R54

REV	DATE	BY	CH	ENFORCER
1	28AUG20	JWO	GKH	PIERCE
2	07AUG20	JWO	GKH	MODEL

		JOB NO.	35096
		SCALE	DATE
TITLE	1500-D-2500P, 182", BROOM COMPARTMENTS (3) X-LAYS, FOLDING TANK	DRAWN BY	JWO
FOR	CHUGIAK VOLUNTEER FIRE & RESCUE CHUGIAK, ALASKA	CHECKED BY	WKL
DWG NO.	35096AD	SHEET SIZE	SHEET NO.
		D	1 OF 1