

PUMPER BODY

Medium Aluminum 2nd Gen Pumper

CHASSIS

Sober FR Chassis

CHASSIS AXLE, FRONT, CUSTOM

18,000 Lb Dana Axle

AXLE, REAR

24,000 Lb Dana Axle

ENGINE

380 HP Cummins L9 Engine

TRANSMISSION

Allison 5th Gen, 3000 EVS P

BUMPER

13" Extended Painted Steel

CAB

6010 Sober FR Cab

BODY WATER TANK

750 Gallon New York Style Water Tank

COMPT, PUMPER, REAR

30.75" FF RoLLup Rear Compt

COMPT, PUMPER, LEFT SIDE

152" RoLLup Full Height Front & Rear FDLR

COMPT, PUMPER, RIGHT SIDE

152" RoLLup Full Height Front & Rear FDLR

FIRE SUPPRESSION PUMPHOUSE

48" Control Zone Top Mount

PUMP

1500 GPM Waterous CSU

CROSSLAYS, 1.50"

1.50" Crosslays Not Required

CROSSLAYS, 2.50"

(2) 2.50" Crosslays

SPEEDLAYS

Speedlays Not Required

GENERATOR

Generator Not Required

Foam System

Akron Educator Foam System

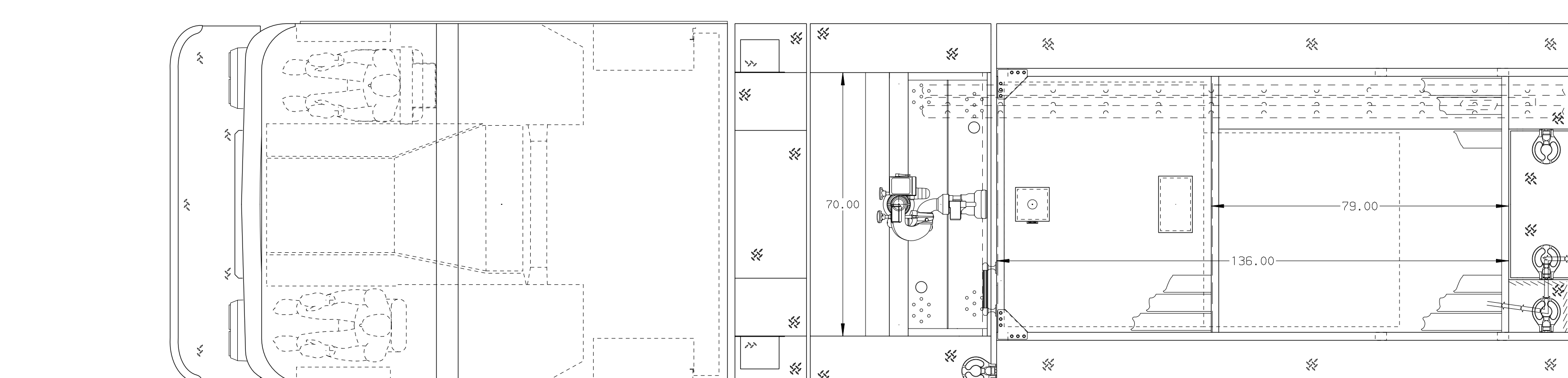
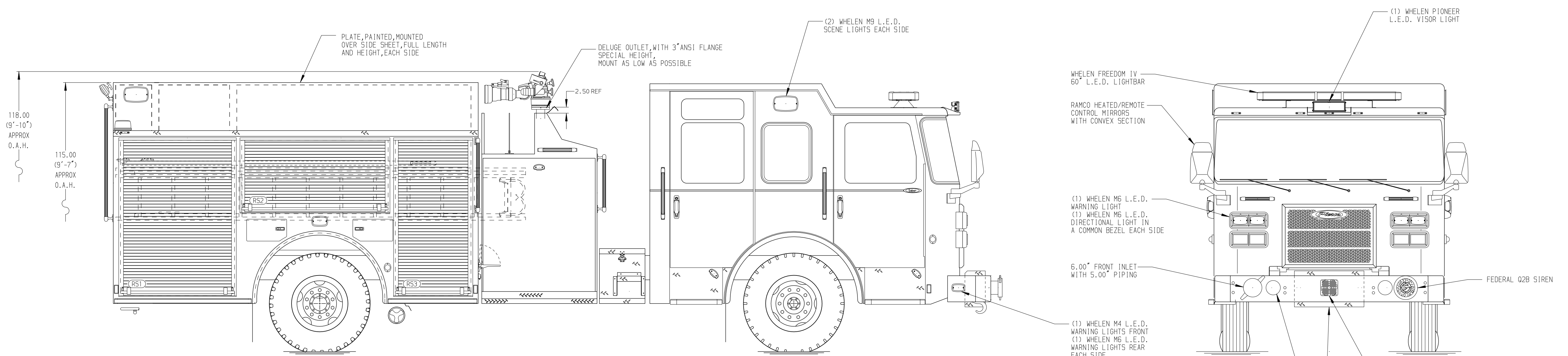
Foam Cell

25 Gallon Foam Cell, Reduced Water

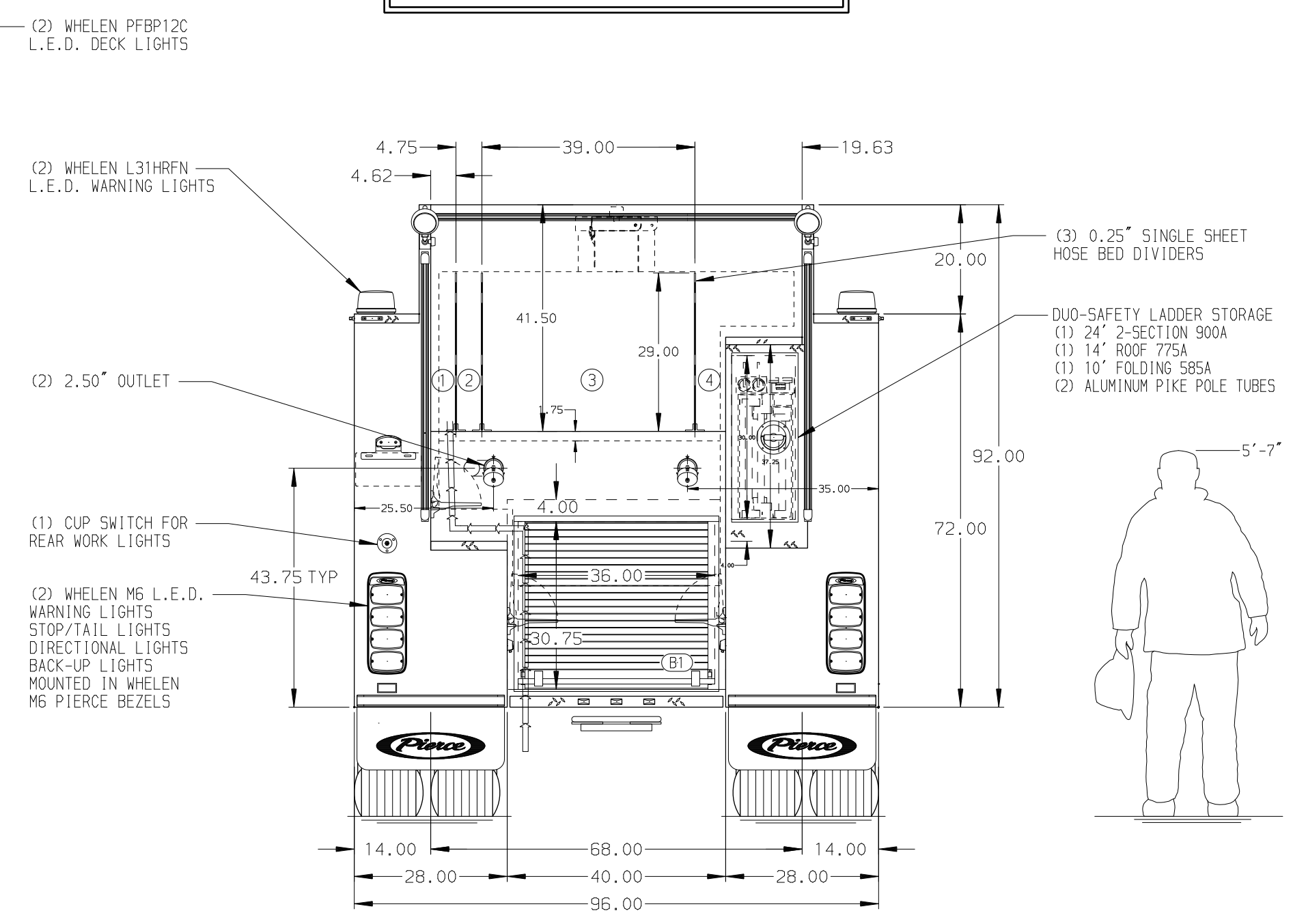
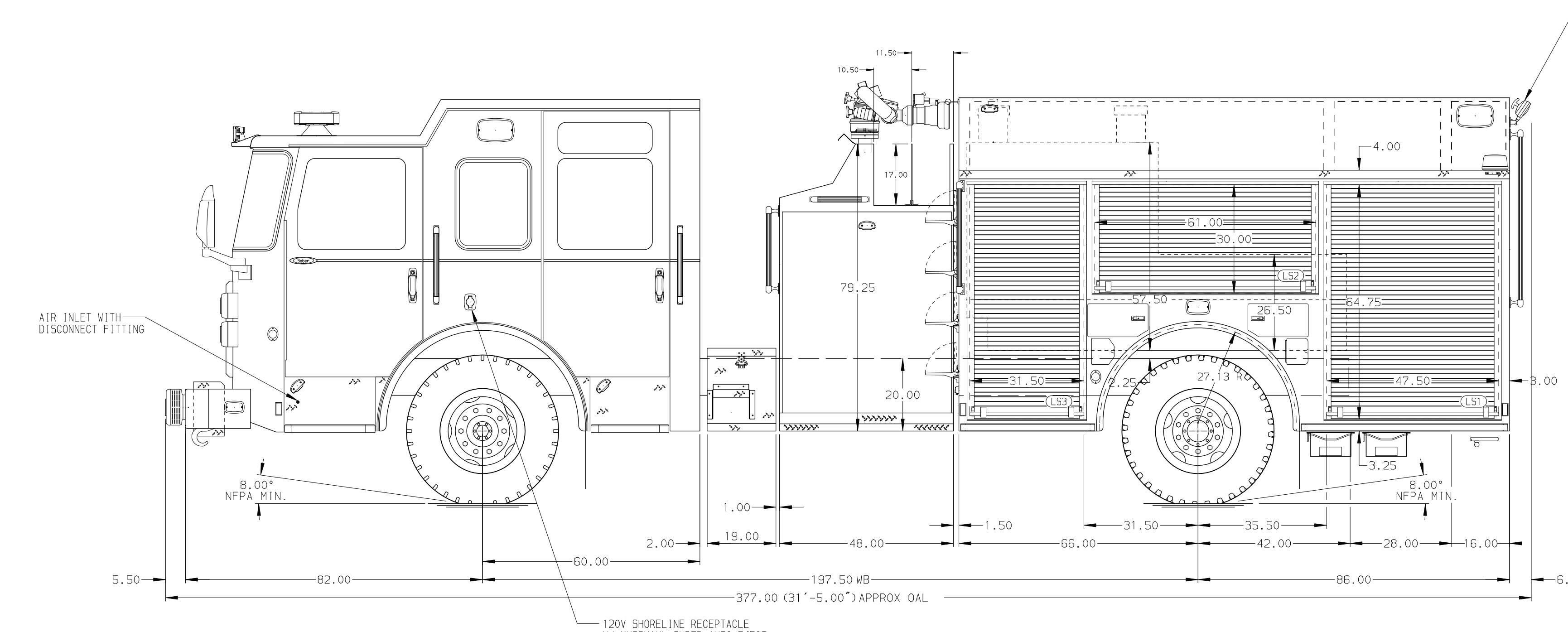
Side Roll and Frontal Impact Protection

NOTE

DIMENSIONS SHOWN ARE APPROXIMATE AND ARE SUBJECT TO MINOR DEVIATIONS AS MAY OCCUR OR BE NECESSARY IN CONSTRUCTION. MINOR DETAILS NOT SHOWN.



| HOSEBED CAPACITY | |
|------------------|------------------------------|
| BED 1 | 150' OF 1.75" D.J. POLY HOSE |
| BED 2 | 150' OF 1.75" D.J. POLY HOSE |
| BED 3 | 600' OF 5.00" D.J. POLY HOSE |
| BED 4 | 150' OF 2.50" D.J. POLY HOSE |



MAXIMUM O.A.H. - 118.00" MAXIMUM O.A.L. - 384.00"

| | | | |
|---------|--------------------------------|------------|-----------|
| | | JOB NO. | 35090 |
| | | SCALE | DATE |
| TITLE | Pierce Pumper Approval Drawing | DRAWN BY | COL |
| FOR | Frankfort Fire Department | CHECKED BY | NPE |
| DWG NO. | 35090AD | SHEET SIZE | SHEET NO. |
| REV | DATE | BY | CH |

| | |
|--------------|----------|
| CHASSIS DATA | PIERCE |
| MAKE | PIERCE |
| MODEL | SABER FR |
| REV | DATE |
| BY | CH |