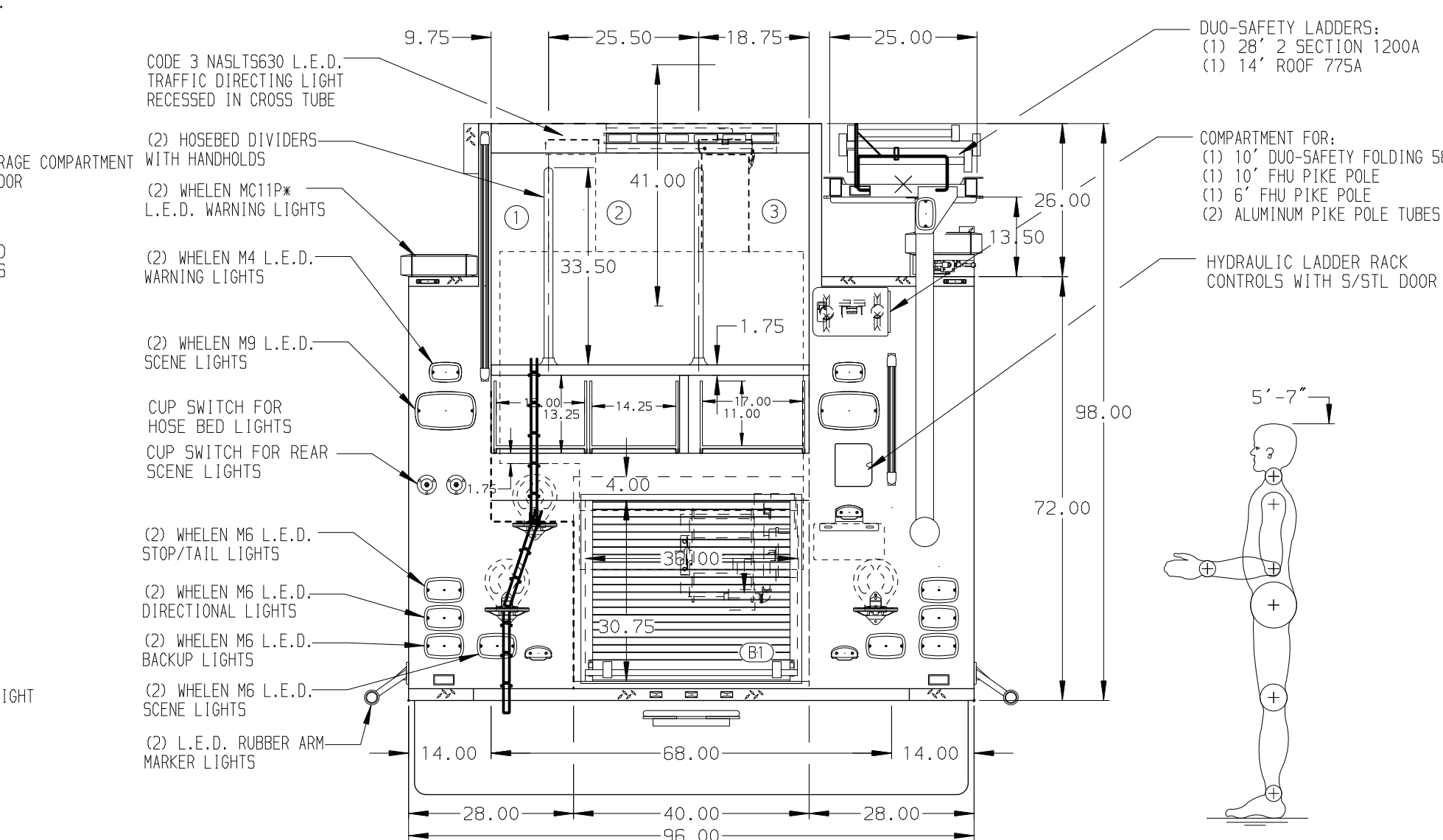
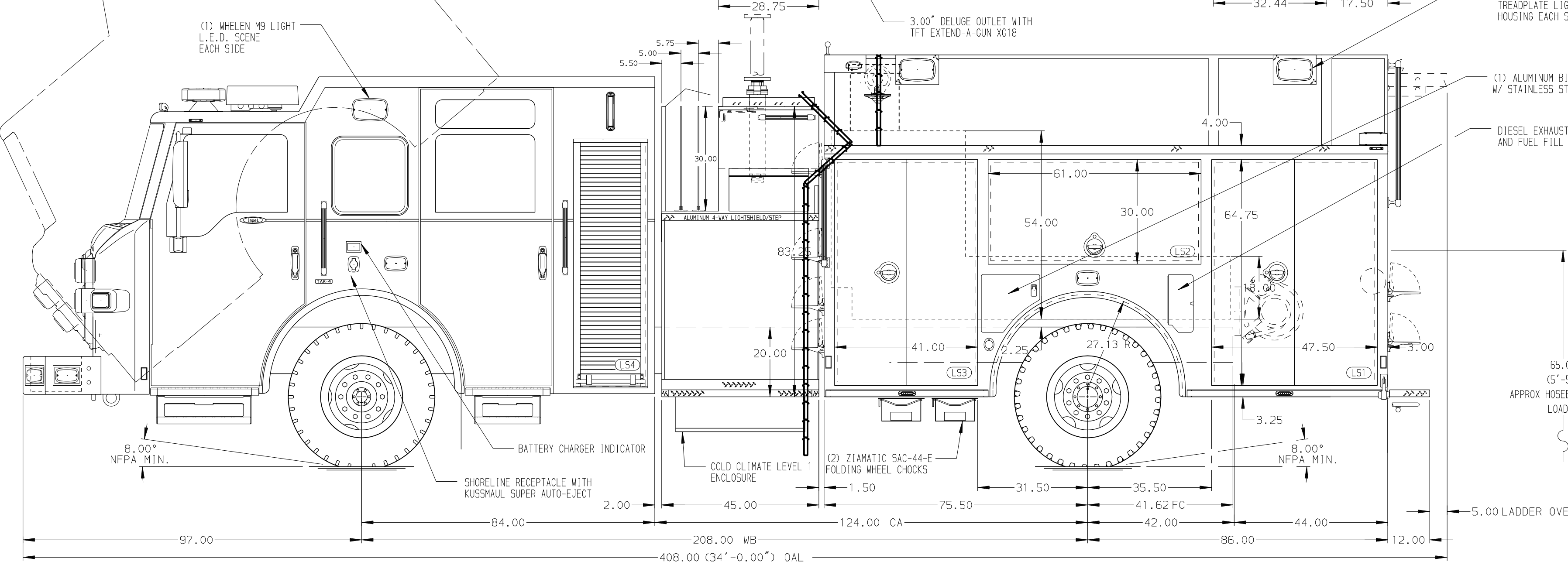


- HOSEBED CAPACITIES
- ① 800' OF 2.50" D.J. POLY HOSE
 - ② 800' OF 5.00" D.J. POLY HOSE
 - ③ 800' OF 3.00" D.J. POLY HOSE



STAINLESS STEEL BODY

SIDE ROLL AND FRONTAL IMPACT PROTECTION

NOTE
DIMENSIONS SHOWN ARE APPROXIMATE AND ARE SUBJECT TO MINOR DEVIATIONS AS MAY OCCUR OR BE NECESSARY IN CONSTRUCTION.
MINOR DETAILS NOT SHOWN.

- 1. BATTERY CHARGER LOCATED BEHIND DRIVER'S SEAT
- 2. DUAL L.E.D. LIGHT STRIPS LOCATED IN HOSE BED
- 3. AKRON EDUCATOR 3098-95 FOAM SYSTEM
- 4. ONE HANNAY ELECTRIC REWIND CORD REEL MODEL 1618-17-18 LOCATED BY WITH 014' OF 10/3 CABLE
- 5. AIR INLET WITH DISCONNECT COUPLING LOCATED IN DS STEP WELL
- 6. AIR OUTLET WITH SHUT OFF VALVE LOCATED IN DS PUMP PANEL
- 7. 120V NEMA RECEPTACLE LOCATED IN CHS COMPARTMENT AND CAB
- 8. DRIP PAN GUARD LOCATED IN COMPARTMENTS L54 AND R54

REV	DATE	BY	CH	IMPEL FR
10FEB21	LME	CW1		CHASSIS DATA
19NOV20	KLE	CW1		MAKE
14OCT20	LME	CW1		PIERCE
07OCT20	LME	CW1		MODEL
04SEP20	LME	CW1		

		JOB NO.	35077
		SCALE	DATE
TITLE 1500-D-540P, 500 GAL WATER W/40 GAL FOAM, 161" BODY (3) XLAYS, HYDRAULIC LADDER RACK, DELUGE, GENERATOR FOR VILLAGE OF NORTHBROOK FIRE DEPARTMENT NORTHBROOK, ILLINOIS	DRAWN BY	LME	27MAY20
	CHECKED BY	NPE	29MAY20
DWG NO.	35077AD-SH1		SHEET NO.
			1 OF 1