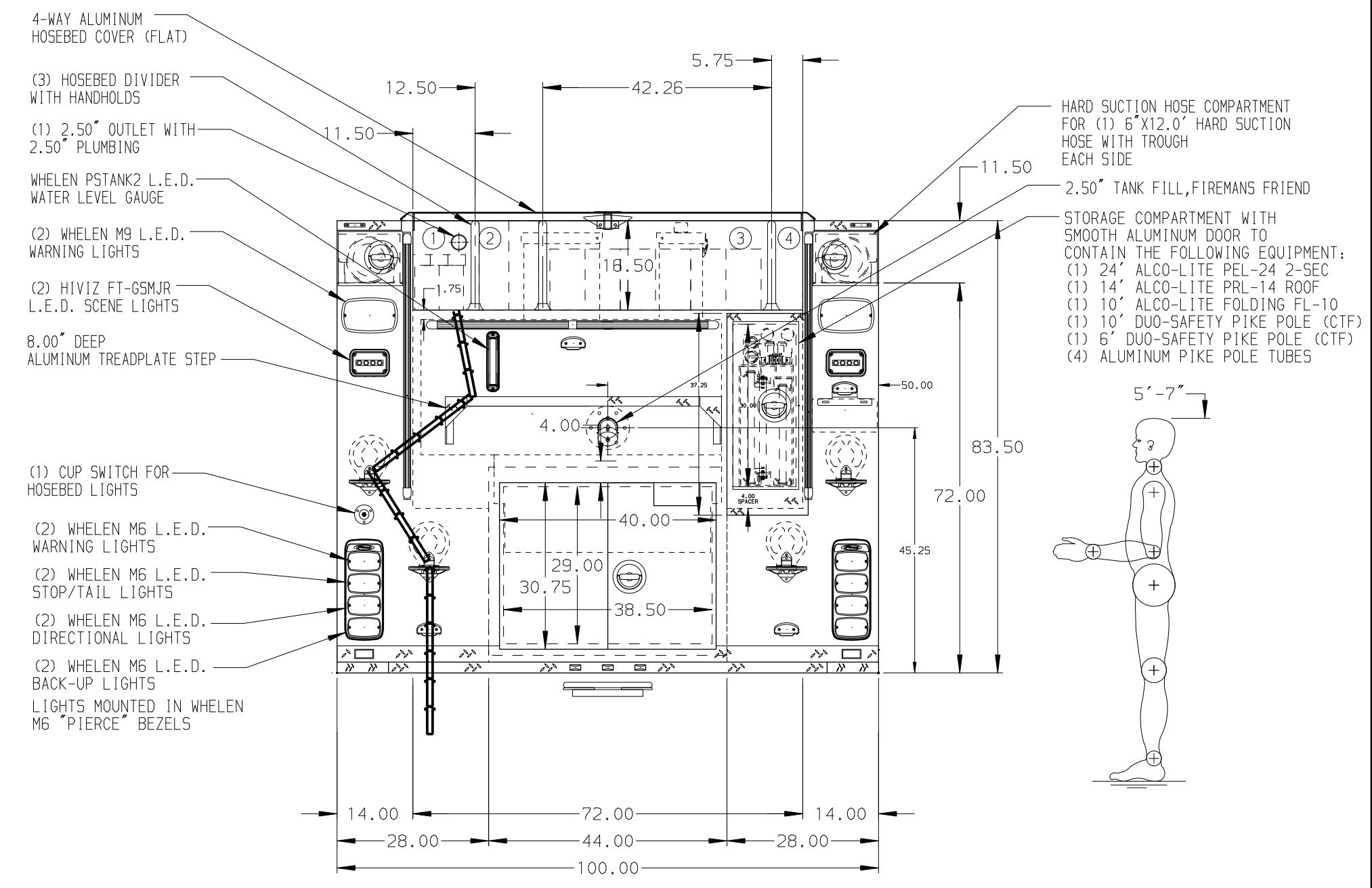
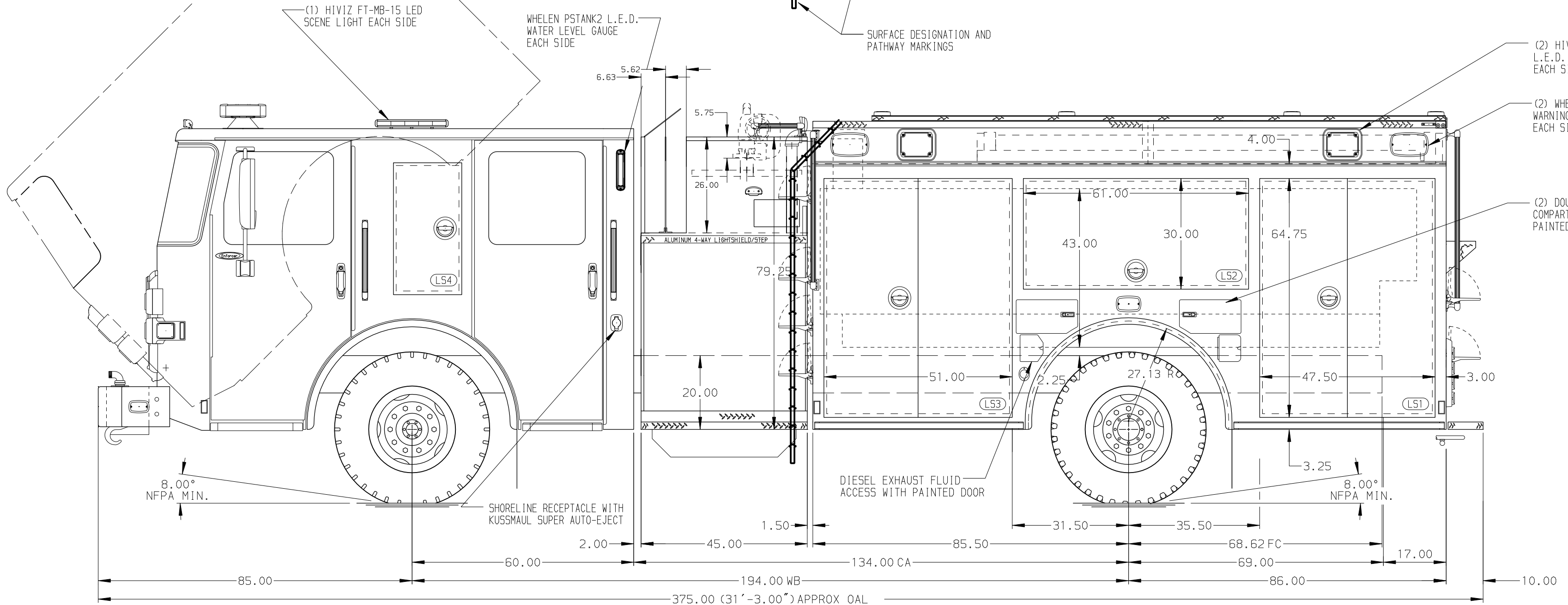


- HOSEBED CAPACITIES**
- ① 250' OF 2.50" D.J. POLY HOSE WITH 100' OF 1.75" D.J. POLY HOSE
  - ② 500' OF 3.00" D.J. POLY HOSE
  - ③ 1000' OF 4.00" D.J. POLY HOSE
  - ④ FORESTRY HOSE STORAGE AREA



ALUMINUM BODY MAX O.A.H. 110.00" MAX O.A.L. 378.00"

**NOTE**  
DIMENSIONS SHOWN ARE APPROXIMATE AND ARE SUBJECT TO MINOR DEVIATIONS AS MAY OCCUR OR BE NECESSARY IN CONSTRUCTION. MINOR DETAILS NOT SHOWN.

1. BATTERY CHARGER/COMPRESSOR LOCATED IN COMPARTMENT LS3
2. BATTERY CHARGER INDICATOR LOCATED ON DRIVER'S SEAT RISER
3. DUAL L.E.D. LIGHT STRIPS LOCATED IN HOSE BED
4. DRIP PAN GUARD FOR ROLL-UP DOOR LOCATED L51, L52, L53, R51, R52, R53 AND B1
5. FULL WIDTH/DEPTH ADJUSTABLE SHELVES TWO IN COMPARTMENTS L51 AND L53 AND ONE IN COMPARTMENT R51
6. ONE FLOOR MOUNTED SLIDE-OUT TRAY IN COMPARTMENTS L51, L53, R51 AND R53
7. ALL BODY COMPARTMENTS WITH LOUVERS SHALL HAVE A REMOVABLE FILTER
8. PEGBOARD ON THE BACK OF COMPARTMENTS L52, L53, R51, R52, AND R53
9. AIR INLET WITH DISCONNECT COUPLING LOCATED IN DS STEP WELL
10. ONSPOT AUTOMATIC TIRE CHAINS
11. WHEEL CHOCKS AND MOUNTING BRACKETS (CTF)
12. ONE ADJUSTABLE SLIDE-OUT TRAY IN R53
13. ONE 120V NEMA DUPLEX RECEPTACLE IN L51 AND R53

REV	DATE	BY	CH	ENFORCER
02SEP20	LST	CW1		MAKE
04AUG20	LST	CW1		PIERCE
22MAY20	LME	EGO		MODEL

		TITLE	1250-D-1280P, 1250 GAL WATER & 30 GAL FOAM CELL (2)CROSSLAYS, DELUGE, 171" FDLER BODY	JOB NO.	PRELIM
		FOR	CHARLTON FIRE DEPARTMENT CHARLTON, MASSACHUSETTS	SCALE	1:24 DATE
DWG NO.		35069AD	DRAWN BY	LME	18MAY20
REV			CHECKED BY	EGO	19MAY20
DATE			SHEET SIZE	D	SHEET NO.
BY					1 OF 1