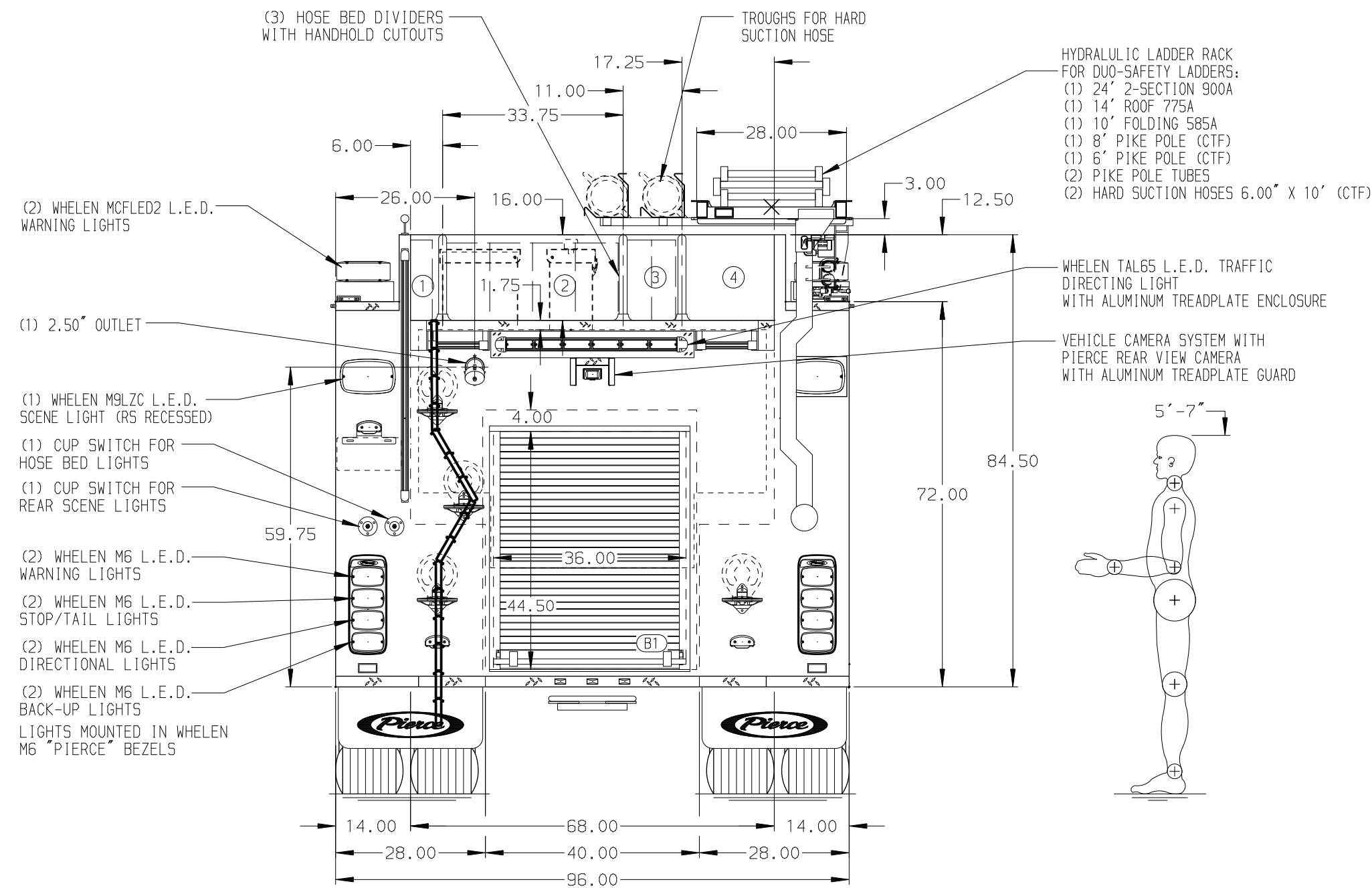
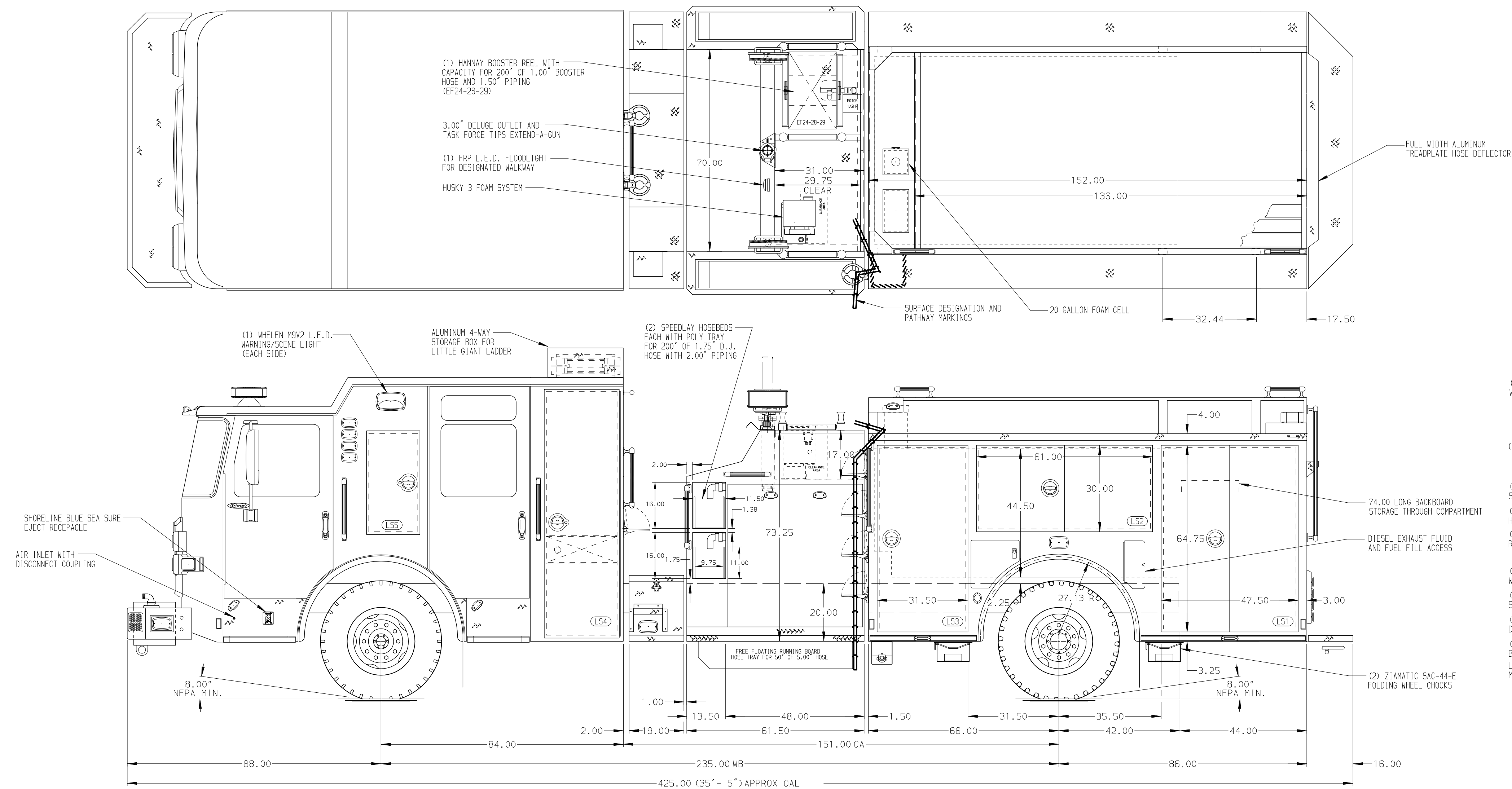


- HOSEBED CAPACITIES
- 1 200' OF 2.50" D.J. POLY HOSE
 - 2 800' OF 5.00" D.J. POLY HOSE
 - 3 400' OF 2.50" D.J. POLY HOSE
 - 4 HOTEL PACKS



ALUMINUM BODY

SIDE ROLL AND FRONTAL IMPACT PROTECTION

NOTE

DIMENSIONS SHOWN ARE APPROXIMATE AND ARE SUBJECT TO MINOR DEVIATIONS AS MAY OCCUR OR BE NECESSARY IN CONSTRUCTION. MINOR DETAILS NOT SHOWN.

- BATTERY CHARGER/COMPRESSOR LOCATED IN FRONT LEFT BODY COMPARTMENT
- BATTERY CHARGER INDICATOR LOCATED ON DRIVER'S SEAT RISER
- DUAL L.E.D. LIGHT STRIPS LOCATED IN HOSE BED
- DRIP PAN GUARD FOR ROLL-UP DOOR LOCATED IN COMPARTMENT B1
- ONE FULL WIDTH/DEPTH ADJUSTABLE SHELF IN COMPARTMENTS L53, R52, TWO L51, R51, AND R53
- ONE ADJUSTABLE SLIDE-OUT TRAY IN COMPARTMENT R51
- ONE SLOTEMASTER FLOOR MOUNTED SLIDE-OUT TRAY IN COMPARTMENT B1
- ONE FLOOR MOUNTED SLIDE-OUT TRAY IN COMPARTMENTS L51, R51, AND R53
- R51 REMOVABLE DUST FILTER
- PARTITION BETWEEN COMPARTMENTS L51/B1 AND R51/B1

- ONE VERTICAL PARTITION IN COMPARTMENT L51
- ALUMINUM PEGBOARD ON BACK WALL OF COMPARTMENTS L51, L52, AND L53
- SWING-OUT TOOLBOARD IN COMPARTMENT L52

REV	DATE	BY	CH	ENFORCER
130CT20		SAM	GKH	MAKE
01SEP20		KLE	PPE	PIERCE
17JUL20		SAM	WKL	MODEL

Pierce MANUFACTURING INC.		JOB NO.	35066 01-02
		SCALE	1:24
		DATE	
		DRAWN BY	KLE
		CHECKED BY	WKL
		SHEET SIZE	D
		SHEET NO.	1 OF 1

TITLE	1500-D-1000P, 980G WATER W/ 20G FOAM, 152" BODY FH FDLER, (2) SPEEDLAYS, HYD LADDER RACK, DELUGE
FOR	STAR FIRE PROTECTION DISTRICT MIDDLETON, IDAHO
DWG NO.	35066AD