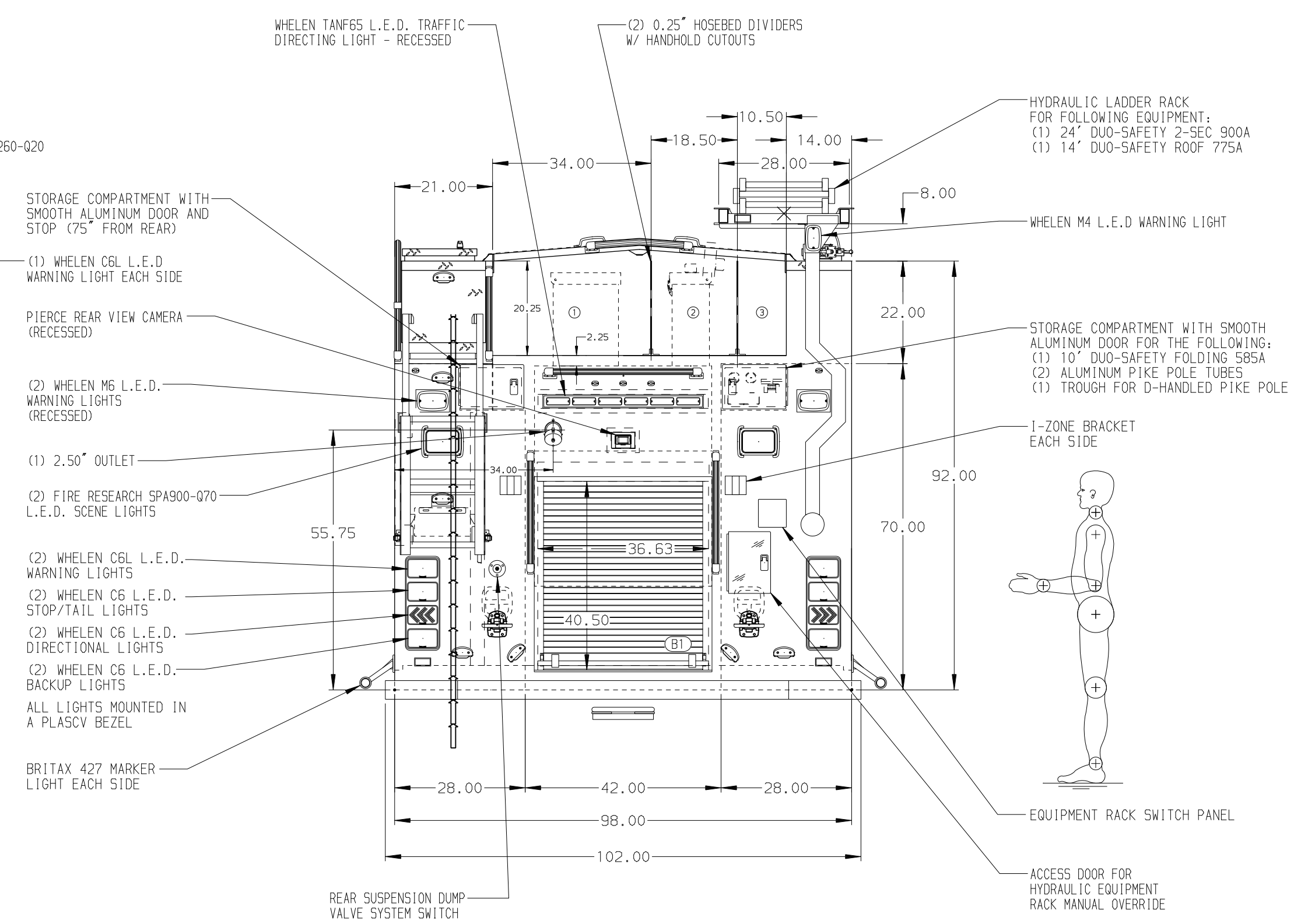






- HOSEBED CAPACITIES
- ① 1000' OF 5.00" D.J. POLY HOSE
 - ② 600' OF 3.00" D.J. POLY HOSE
 - ③ 400' OF 2.50" D.J. POLY HOSE



ALUMINUM BODY

SIDE ROLL AND FRONTAL IMPACT PROTECTION

NOTE DIMENSIONS SHOWN ARE APPROXIMATE AND ARE SUBJECT TO MINOR DEVIATIONS AS MAY OCCUR OR BE NECESSARY IN CONSTRUCTION. MINOR DETAILS NOT SHOWN.	1. ONSPOT AUTOMATIC TIRE CHAINS TO BE PROVIDED AT THE REAR 2. WHEEL CHOCKS AND BRACKETS SUPPLIED BY CUSTOMER 3. BATTERY CHARGER LOCATED BEHIND DRIVER'S SEAT 4. BATTERY CHARGE INDICATOR LOCATED NEAR DRIVER'S SEAT RISER WITH BRACKET 5. DUAL L.E.D. LIGHT STRIPS LOCATED BELOW HOSE BED COVER 6. TEN FULL WIDTH/DEPTH ADJUSTABLE SHELVES - THREE IN RS1, TWO IN LS1 AND RS3, AND ONE IN LS2, LS3 AND B1 7. ONE FLOOR MOUNTED SLIDE-OUT TRAY IN LS1 AND B1 8. THREE ADJUSTABLE SLIDE-OUT TRAYS IN LS3 9. ONE FLOOR MOUNTED SLIDE-OUT TILTING TRAY IN LS2	10. ONE ADJUSTABLE TILTING SLIDE-OUT TRAY IN COMPARTMENT RS3 11. TWO SLIDE-OUT TOOL BOARDS WITH PEGBOARD PATTERN IN COMPARTMENT RS3 12. ONE SWING-OUT TOOLBOARD IN RS2 13. VERTICAL PARTITION IN RS3 14. TRANSVERSE PARTITION IN COMPARTMENT RS1/B1 15. ALUMINUM PEGBOARD ON BACK WALL COMPARTMENT RS2 16. ONE 120V NEMA DUPLEX RECEPTACLE IN LS1		09SEP20	JRO	SMA	CHASSIS DATA	TITLE FOR	1500-D-750 WATER/20 FOAM, 177" RESCUE BODY CROSSLAYS, DELUGE, FOAM SYSTEM, LADDER RACK RENO FIRE DEPARTMENT RENO, NEVADA	DRAWN BY JRO	21APR20			
				22JUL20	JRC	SMA								
				14JUL20	BKB	SMA	MAKE						CHECKED BY SMA	23APR20
				11JUN20	JRO	SMA	PIERCE							
				28APR20	JRO	SMA	MODEL							
			REV	DATE	BY	CH	IMPEL FR	DWG NO.		SHEET SIZE	SHEET NO.			
								35065AD		D	1 OF 1			

