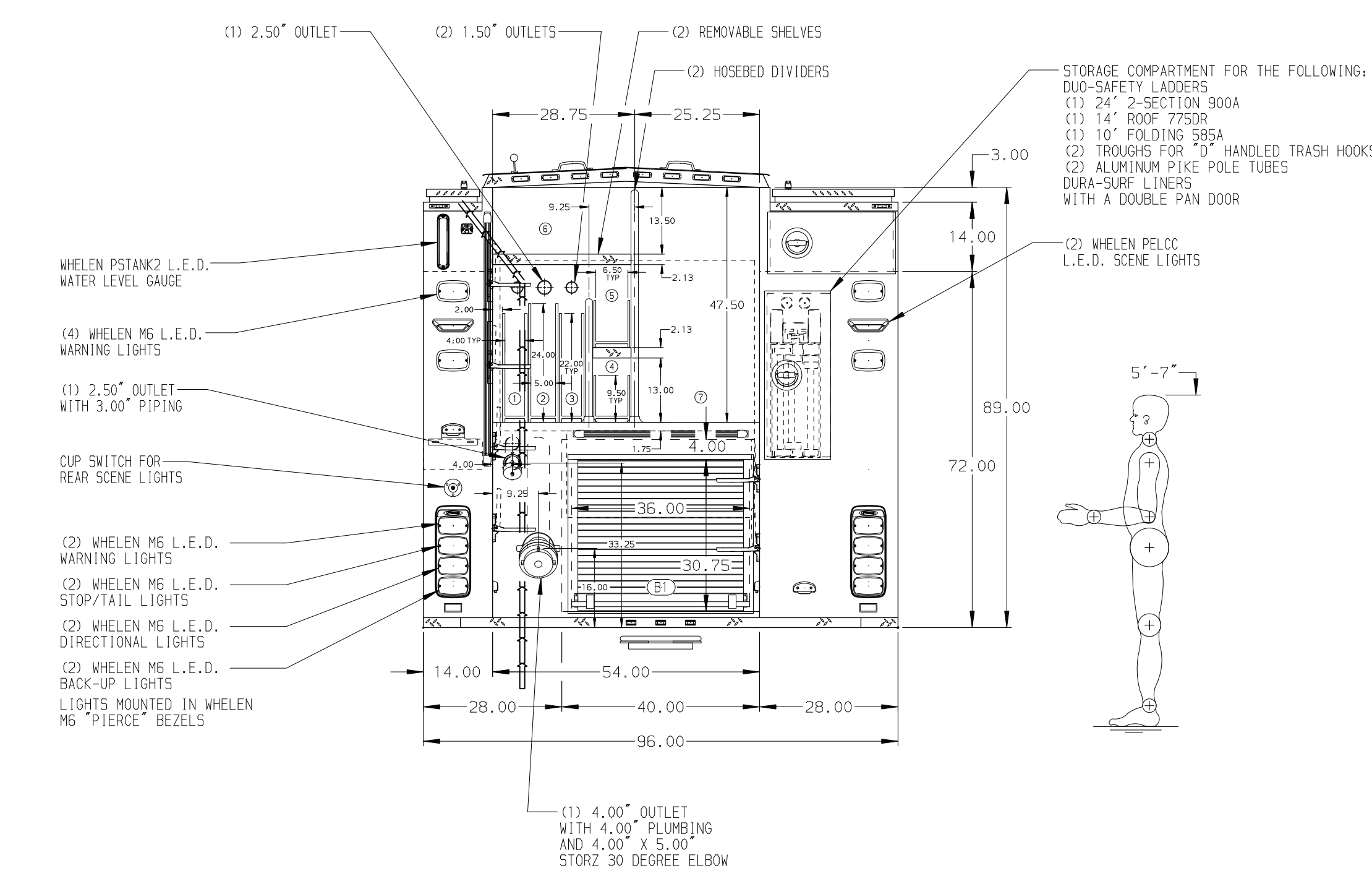
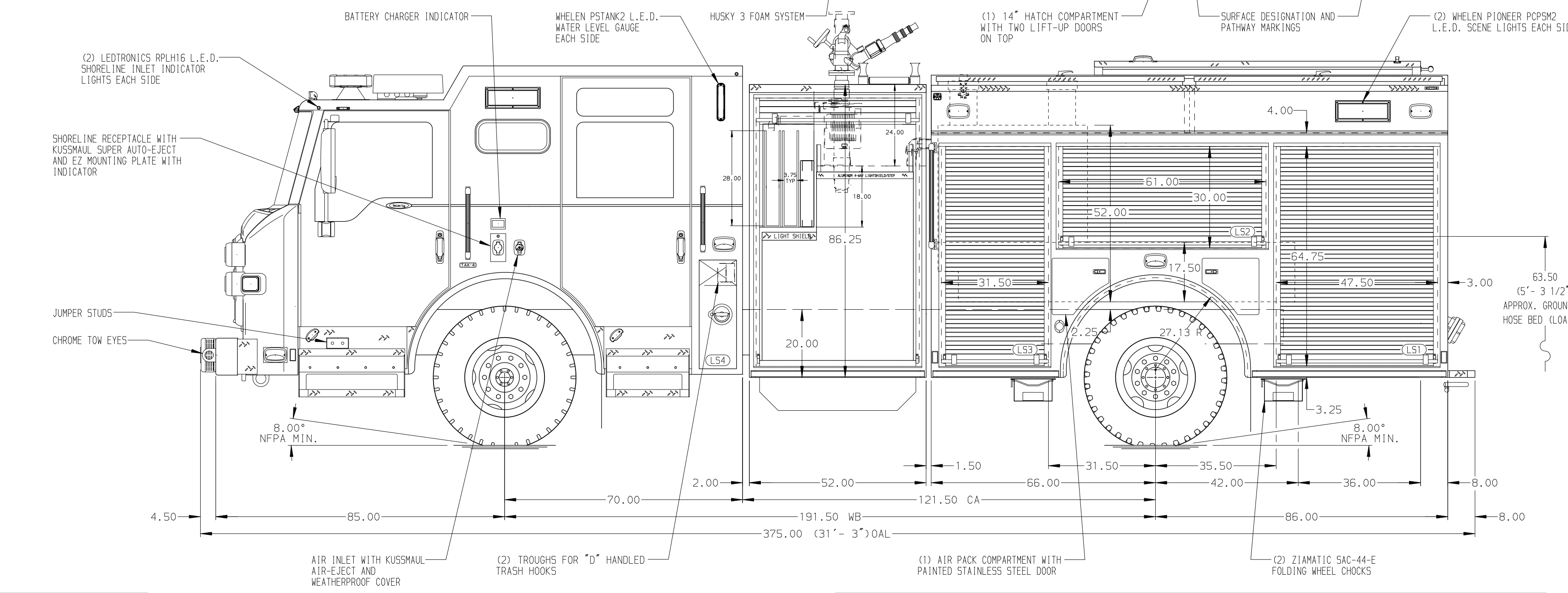


- HOSEBED CAPACITIES**
- ① 200' OF 1.75" D.J.POLY HOSE (IN TRAY)
 - ② 200' OF 2.50" D.J.POLY HOSE (IN TRAY)
 - ③ 200' OF 1.75" D.J.POLY HOSE (IN TRAY)
 - ④ 150' OF 1.75" D.J.POLY HOSE (IN TRAY)
 - ⑤ 150' OF 1.75" D.J.POLY HOSE (IN TRAY)
 - ⑥ 150' OF 2.50" D.J.POLY HOSE (ON EDGE)
 - ⑦ 100' OF 1.75" D.J.POLY HOSE (COILED)
 - ⑧ 1000' OF 5.00" D.J.POLY HOSE



ALUMINUM BODY

SIDE ROLL AND FRONTAL IMPACT PROTECTION

NOTE
 DIMENSIONS SHOWN ARE APPROXIMATE AND ARE SUBJECT TO MINOR DEVIATIONS AS MAY OCCUR OR BE NECESSARY IN CONSTRUCTION. MINOR DETAILS NOT SHOWN.

- 1. ONSPOT AUTOMATIC TIRE CHAINS TO BE PROVIDED AT REAR
- 2. BATTERY CHARGER LOCKED BEHIND DRIVER'S SEAT
- 3. TWO-PIECE REMOVABLE CARGO AREA FLOOR
- 4. ONE HANNAY ALUMINUM BOOSTER REEL MODEL SBEP20-30-31 WITH 150' OF 1.00" BOOSTER HOSE AND 1.50" PIPING IN CARGO AREA

REV	DATE	BY	CH	VELOCITY
24NOV20	JRO	GKH		CHASSIS DATA
03NOV20	LST	MSA		MAKE
07OCT20	JRO	MSA		PIERCE
09JUL20	JRO	WKL		MODEL

Pierce MANUFACTURING INC.

JOB NO. 35057-01, -02

SCALE 1:24 DATE

DRAWN BY JRO 06JUL20

CHECKED BY WKL 7JUL20

SHEET SIZE D SHEET NO. 1 OF 2

TITLE 1500-500 WATER/30 FOAM, 152" BODY, SIDE CONTROL CROSSLAYS, DELUGE, BOOSTER REEL, LADDER COMPARTMENT

FOR SHORELINE FIRE DEPARTMENT SHORELINE, WASHINGTON

DWG NO. 35057AD-SH1