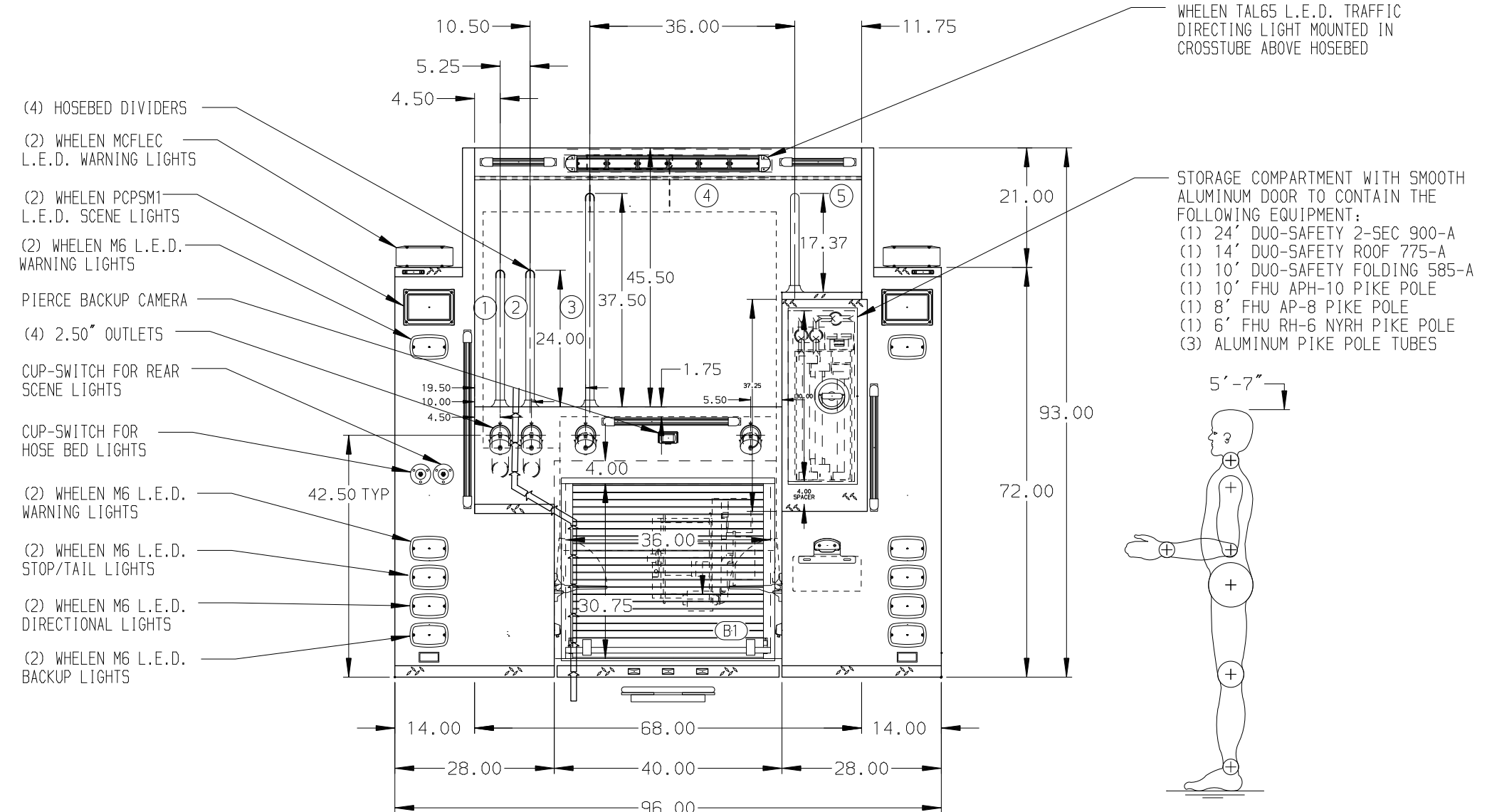
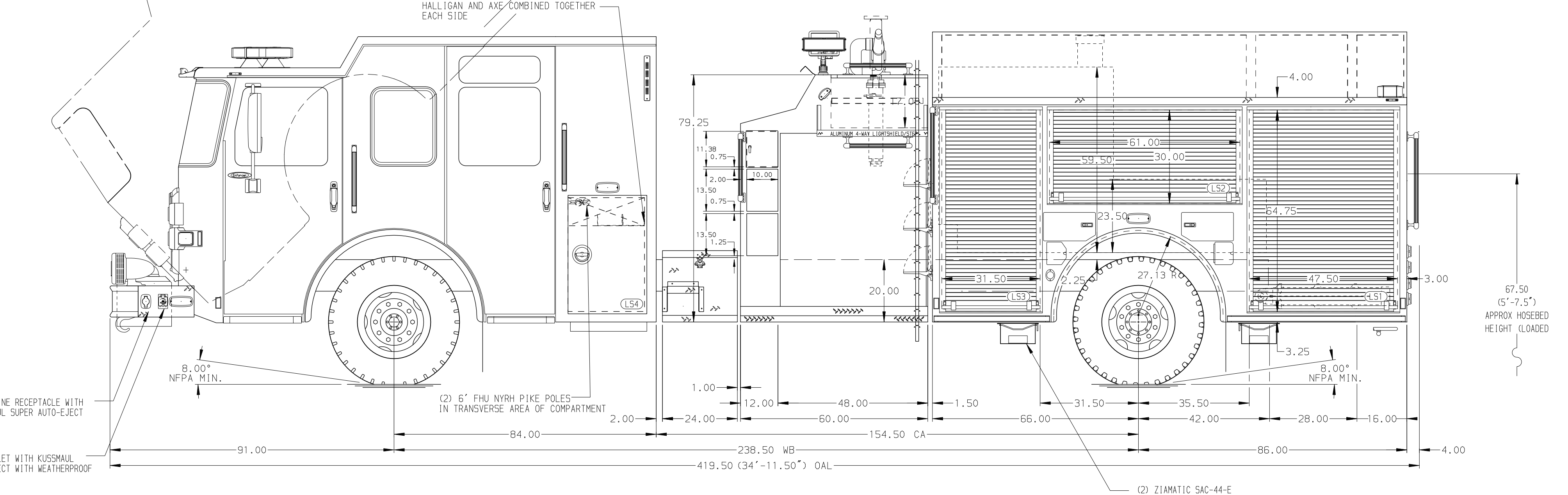


- HOSEBED CAPACITIES
- ① 200' OF 1.75" D.J. POLY HOSE
  - ② 200' OF 1.75" D.J. POLY HOSE
  - ③ 300' OF 2.50" D.J. POLY HOSE
  - ④ 1100' OF 5.00" RUBBER LDH
  - ⑤ 250' OF 3.00" D.J. POLY HOSE



STAINLESS STEEL BODY      MAXIMUM O.A.H. 116.00"

**NOTE**  
DIMENSIONS SHOWN ARE APPROXIMATE AND ARE SUBJECT TO MINOR DEVIATIONS AS MAY OCCUR OR BE NECESSARY IN CONSTRUCTION. MINOR DETAILS NOT SHOWN.

1. BATTERY CHARGER LOCATED BEHIND THE DRIVER SEAT
2. BATTERY CHARGE INDICATOR LOCATED ON DRIVER'S SEAT RISER
3. DUAL L.E.D. LIGHT STRIPS LOCATED IN HOSE BED
4. DRIP PAN GUARD FOR ROLL-UP DOOR LOCATED ON ALL BODY COMPARTMENT DOORS
5. ONE FULL WIDTH/DEPTH ADJUSTABLE SHELF IN COMPARTMENT LS1, LS2, LS3, RS1, RS2, AND RS3
6. ONE FLOOR MOUNTED SLIDE-OUT TRAY IN COMPARTMENT RS1, RS2, LS1, B1
7. SWING-OUT TOOL BOARD WITH PEGBOARD PATTERN IN COMPARTMENT LS2
8. ALUMINUM PEGBOARD ON BACK WALL OF COMPARTMENT LS1, LS2, RS1, RS2, RS3
9. ONE ADJUSTABLE 0.36" PLATE IN COMPARTMENT LS1

10. CIRCUIT BREAKER PANEL IN COMPARTMENT LS3
11. ONE HANNAY ELECTRIC REWIND CORD REEL MODEL 1618-17-18 LOCATED IN B1 WITH QTY OF 10/3 CABLE
12. 120V DUPLEX RECEPTACLE LOCATED NEXT TO MOUNTING PLATE INSIDE CAB
13. 120V DUPLEX RECEPTACLE LOCATED IN LS1, LS3, AND RS1
14. 120V DUPLEX RECEPTACLE LOCATED IN CARGO COMPARTMENT
15. LITTLE GIANT VELOCITY MODEL 13 LADDER IN LS1

REV	DATE	BY	CH	ENFORCER
16JUN20	BKB	DTS		
18JUN20	LST	DTS		

		JOB NO.	35047
		SCALE	DATE
TITLE	2000-D-750P, 152" BODY FH FRONT & REAR, FDLR (2)SPEEDLAYS, (1)DEADLAY, DELUGE, GENERATOR		
FOR	TOWNSHIP OF WASHINGTON TOWNSHIP OF WASHINGTON, NJ		
DWG NO.	35047AD		
DRAWN BY	CDU	CHECKED BY	AZA
	22APR20		29APR20
SHEET SIZE	D	SHEET NO.	1 OF 1