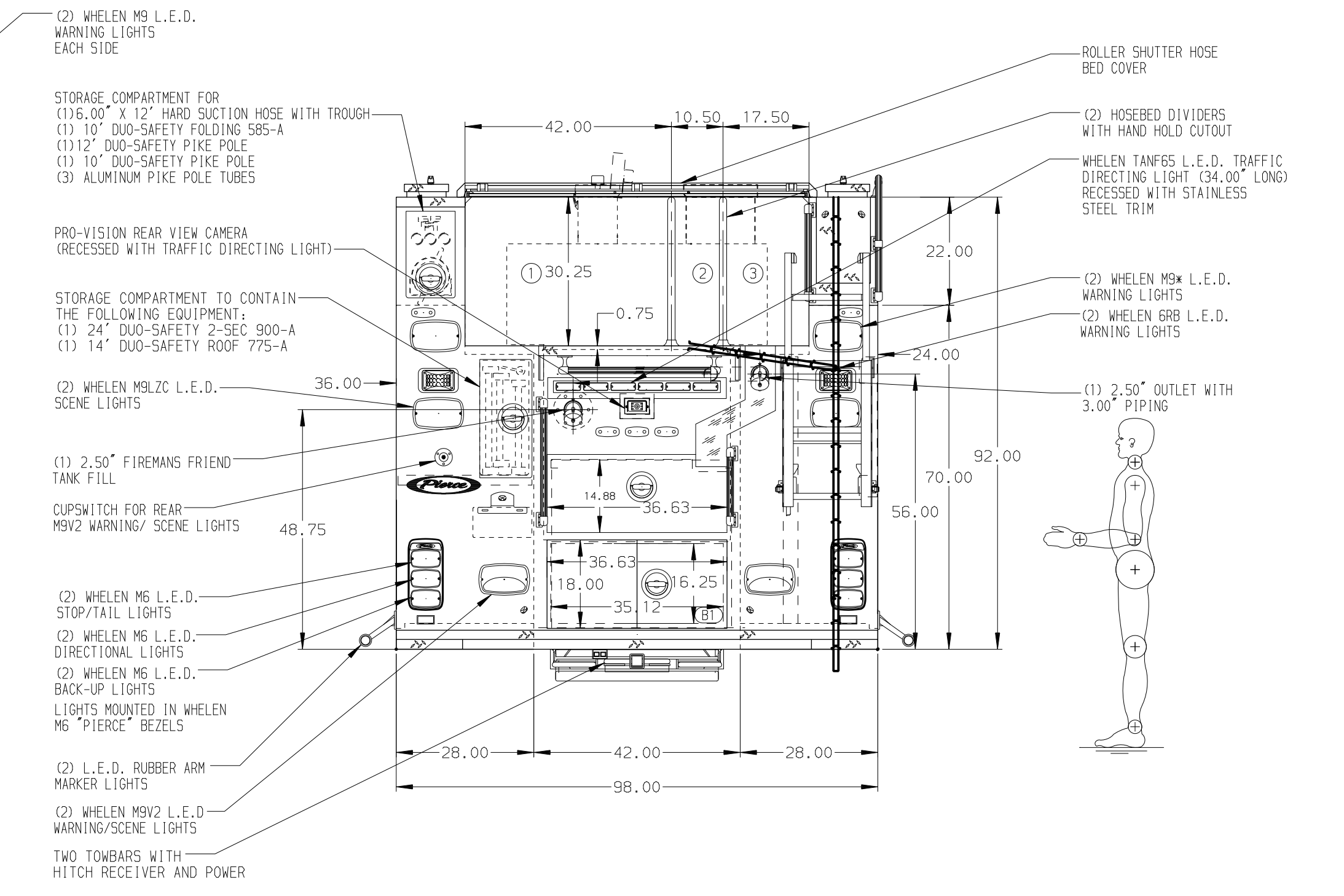
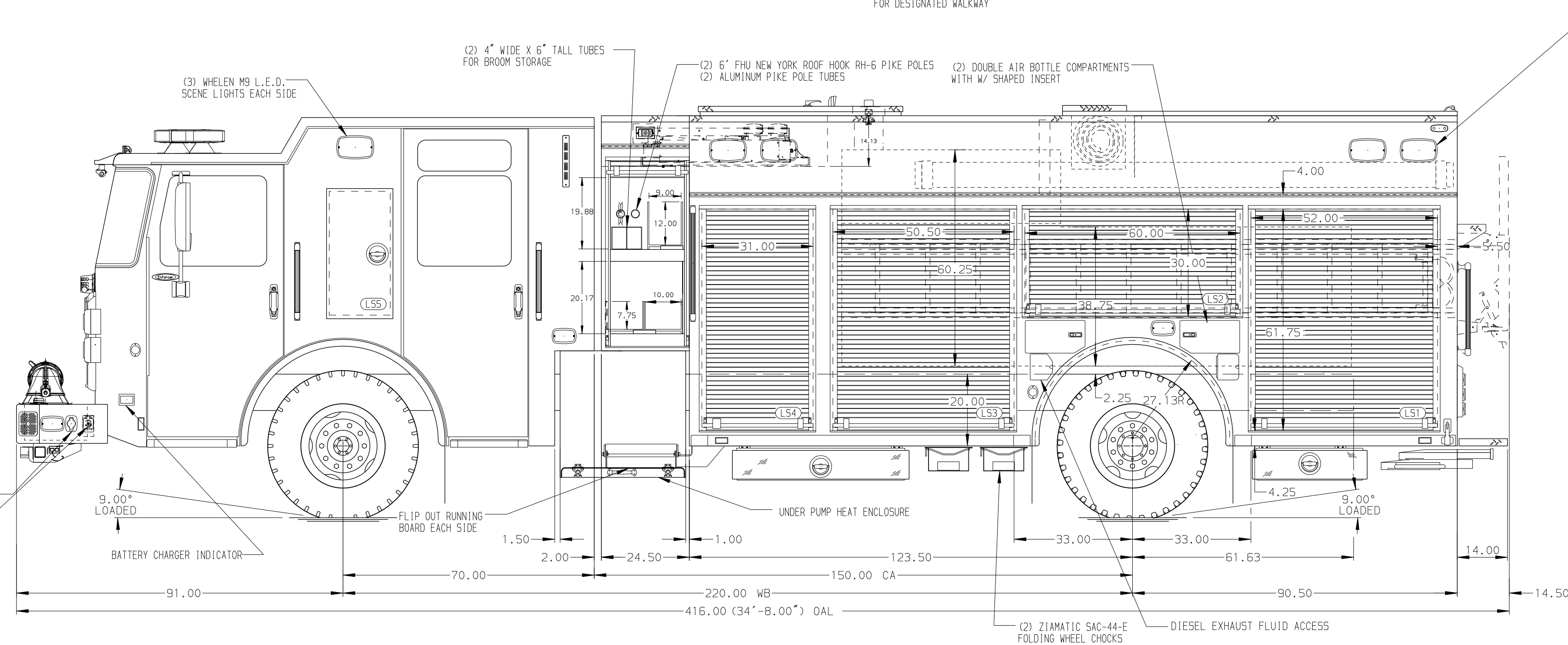


- HOSEBED CAPACITIES
- ① 1100' OF 5.00" HOSE
 - ② 250' OF 2.50" HOSE
 - ③ 500' OF 3.00" HOSE



ALUMINUM BODY

NOTE
DIMENSIONS SHOWN ARE APPROXIMATE AND ARE SUBJECT TO MINOR DEVIATIONS AS MAY OCCUR OR BE NECESSARY IN CONSTRUCTION. MINOR DETAILS NOT SHOWN.

1. BATTERY CHARGER LOCATED BEHIND DRIVER'S SEAT
2. S/STL SCUFFPLATE RUNNING FROM JUST BELOW HOSEBED # 3 TO THE NOTCH ABOVE THE REAR COMPARTMENT
3. S/STL SCUFFPLATE AROUND DEF FILL OPENING
4. S/STL SCUFFPLATE AROUND FUEL FILL OPENING
5. S/STL SCUFFPLATE AROUND AIR BOTTLE COMPARTMENT OPENINGS
6. FULL WIDTH/DEPTH ADJUSTABLE SHELVES TWO IN L53, R51, AND R53 AND ONE IN L51 AND L52
7. ONE ADJUSTABLE SLIDE-OUT TRAY IN L51 AND R54
8. ONE ADJUSTABLE TILTING SLIDE-OUT TRAY IN R54
9. ONE FLOOR MOUNTED SLIDE-OUT TRAY IN L54
10. SLIDE-OUT TOOL BOARD WITH PEGBOARD PATTERN AND BRUSHED FINISH IN L51
11. TWO SWING-OUT ALUMINUM TOOL BOARDS IN R52
12. ONE 150 # OIL DRY HOPPER IN R52
13. ALUMINUM PEGBOARD WITH TRACKS ON THE REAR WALL OF R52
14. LITTLE GIANT VELOCITY MODEL 13 LADDER IN R51
15. (4) ADDITIONAL POLY TRAYS SHIPPED LOOSE
16. 2100 AIR BOTTLE BRACKET IN THE DRIVER'S SIDE EMS COMPARTMENT
17. ONE VERTICAL DIVIDER IN THE DRIVER'S SIDE EMS COMPARTMENT
18. ONE FLOOR MOUNTED SLIDE-OUT TRAY WITH SIDE SLIDES IN B1
19. TWO VERTICAL DIVIDERS IN R51 AND B1
20. ONE VERTICAL PARTITION WITH PEGBOARD IN L53
21. ONE 120 V 6-PLACE RECEPTACLE STRIP BEHIND THE DRIVER'S SEAT, OFFICER'S SEAT, IN THE DRIVER'S SIDE EMS CABINET, AND TWO IN L51
22. 120 V NEMA DUPLEX RECEPTACLE ONE IN DRIVER'S SIDE EMS COMPARTMENT, L52, L53, L54, B1, R51, R52, R53, AND R54, AND TWO IN L51

REV	DATE	BY	CH	ENFORCER
28SEP20	LST	AZA		PIERCE
13AUG20	LST	AZA		MODEL

		JOB NO.	35045		
		SCALE	DATE		
CHASSIS DATA MAKE MODEL ENFORCER	TITLE	1500-D-1025P 1000 GAL OF WATER W/ 25 GAL FOAM CELL 214" PUC RESCUE, LADDERS THRU BODY, DELUGE	DRAWN BY	LST	26MAY20
	FOR	WESTERN LAKES FIRE DISTRICT OCONOMOWOC, WISCONSIN	CHECKED BY	CDU	26MAY20
	DWG NO.	35045AD	SHEET SIZE	D	SHEET NO. 1 OF 1