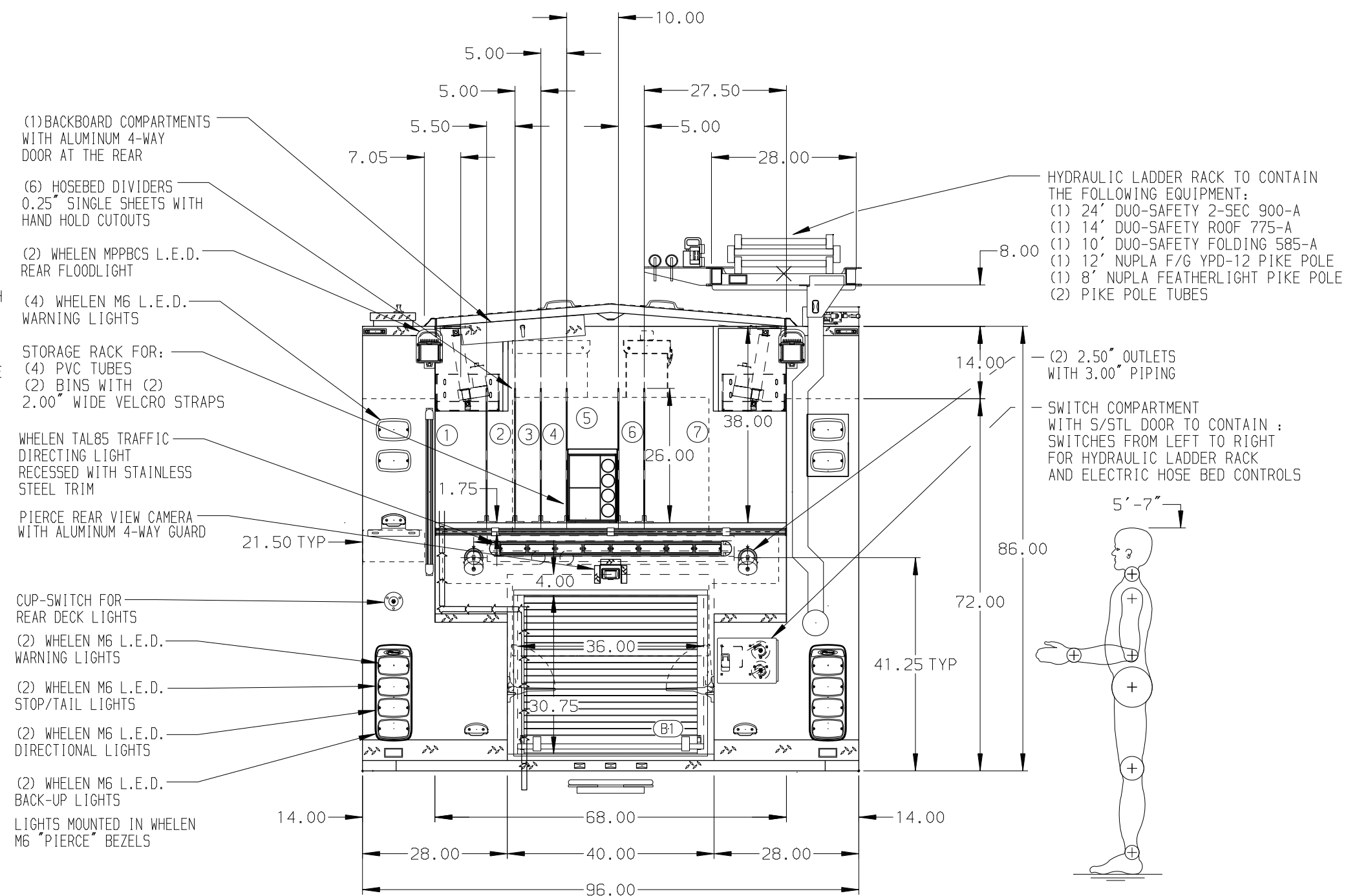


HOSEBED CAPACITIES





- ① 400' OF 2.50" HOSE
- ② 200' OF 2.50" HOSE
- ③ 300' OF 1.75" HOSE
- ④ 150' OF 1.75" HOSE
- ⑤ STORAGE RACK
- ⑥ 150' OF 1.75" HOSE
- ⑦ 800' OF 4.00" HOSE




SIDE ROLL AND FRONTAL IMPACT PROTECTION

DIMENSIONS SHOWN ARE APPROXIMATE
AND ARE SUBJECT TO MINOR DEVIATIONS
AS MAY OCCUR OR BE NECESSARY IN
CONSTRUCTION.
MINOR DETAILS NOT SHOWN.

- | | |
|--|--|
| 1. BRUSHED 5/8" BOTTOM OF DOOR FRAME IN COMPARTMENT L51, L52, & L53 | 10. ONE AIR BOTTLE BRACKET IN COMPARTMENT L53 & R52 |
| 2. BRUSHED 5/8" INSIDE SIDE COMPARTMENT DOORS | 11. TWO HORIZONTAL EQUIPMENT TRACKS IN COMPARTMENT R52 |
| 3. REVERSED HINGED DOOR ON COMPARTMENT L53 | 12. COMPARTMENT VENTILATION SYSTEM WITH TIMER |
| 4. TWO ADJUSTABLE SHELVES IN COMPARTMENTS L51, L53, R52 AND R53; ONE IN R51 AND B1 | 13. VANNER LIFE STAR INVERTER/BATTERY CHARGER LOCATED R53. |
| 5. ONE FLOOR MOUNTED SLIDE-OUT TRAY IN COMPARTMENTS L51, R51, & L53 FULL WIDTH | 14. AIR OUTLET WITH SHUT OFF VALVE ON DS PUMP PANEL |
| 6. SWING-OUT TOOL BOARD IN COMPARTMENT L51 | 15. KUSUMAL 12V AIR COMPRESSOR FOR TOP COMPARTMENT R53 |
| 7. ONE VERTICAL PARTITION IN COMPARTMENT L51 | 16. ONE 120V DUPLEX RECEPTACLE IN COMPARTMENT L51, R51, R53 AND BEHIND DRIVER'S SEAT |
| 8. PARTITION BETWEEN COMPARTMENTS L51/B1 AND R51/B1 | 17. ONE FLOOR MOUNTED SLIDE-OUT TRAY WITH SIDE SLIDES LOCATED IN COMPARTMENT B1 |
| 9. ALUMINUM WITH TRACKS ON THE BACK WALL OF COMPARTMENT L52 | |

				CHASSIS DATA
	260CT20	JW0	SMA	MAKE
	235EP20	JU5	SMA	PIERCE
	045EP20	COL	SMA	
	20AUG20	COL	SMA	MODEL
REV	DATE	BY	CH	ENFORCER

 MANUFACTURING INC.		JOB NO.	35041
		SCALE 1:24	DATE
TITLE	2000-D-500P W/25 GAL. FOAM CELL, DELUGE, (3) CROSSLAYS 152" PUMPER BODY, HYDRAULIC LADDER RACK, BOOSTER REEL		DRAWN BY JWO 03JUN20
FOR	SOUTH SNOHOMISH COUNTY FIRE & RESCUE EVERETT, WASHINGTON		CHECKED BY SMA 3JUN20
DWG NO.	35041 AD		SHEET SIZE D SHEET NO. 1 OF 1